



ColorTek PM Exterior Stucco

Polymer-modified Cement Stucco Finishes



COVERAGE

Coarse, 16/20 and 20/30

Dash Finish: 8yd² to 10yd²
(6.7m² to 8.4m²)

Texture Finish: 10yd² to 16yd²
(8.4m² to 13.4m²)

Float Finish: 15yd² to 20yd²
(12.5m² to 16.7m²)

30/30 - SmoothCoat

8yd² to 10yd² (6.7m² to 8.4m²)

Coverage may vary due to ambient air temperature, surface temperature, surface porosity, mixing methods, and/or application methods.

PACKAGING

Moisture resistive,
90lb (40.8kg) bags

STORAGE

1. Store bags in a cool, dry location.
2. Do not store in direct contact with the ground and/or concrete.
3. Protect bags from weather and other damage.

SHELF LIFE

1 year

COLOR

White (Base 10), grey (Base 2), white/grey (Base 1), darker grey (Base 5), factory mixed color, or paint grade

PRODUCT DESCRIPTION

ColorTek PM (Polymer-modified) is a premium, factory blended, polymer-modified cement-based, stucco finish. ColorTek PM has improved tensile, bond, and flexural strengths and can be applied over polymer-modified base coats without the addition of admixes or bonders. It is available in the full range of ColorTek aggregate and base combinations; see the appropriate ColorTek product data sheet for additional information.

FEATURES

Polymer-modified

Integral Color

Durable

Fire Resistant

Impact Resistant

Economical

Insect Resistant

BENEFITS

Increases strength, flexibility, and adhesion

Lasting, uniform color that resists fading or discoloration; UV resistant

Long life-cycle with minimal maintenance

Does not burn

Resists impact damage

Lower cost product and easy to apply

Impervious to termites, rot, and fungus

BASIC USES

ColorTek is intended for use as a decorative, low-cost, low-maintenance finish. It can be used directly over polymer-modified base coats.

AREA OF USES

ColorTek Exterior Stucco may be applied over the following products:

1. One coat stucco
2. Brown coat
3. Stucco
4. FoamTek/DryBond/CI-Base
5. Crack Isolation System
6. CMU/poured-in-place and/or tilt-up concrete/masonry
7. Approved Omega base coats and/or cementitious finishes

OPTIONAL PRODUCT UPGRADES/ENHANCEMENTS

PRODUCT	BENEFIT
OmegaCure	Liquid accelerator to improve hydration, increase early strength/hardness, and allow cold weather application
Crack Isolation System	Supplementary system designed to mitigate surface cracking in new and existing plaster systems by integrating woven fiberglass mesh into the base coat or brown coat prior to applying the finish



Sand 16/20



Sand 20/30



Sand 30/30



Smooth Coat

Application Instructions



SURFACE PREPARATION

All surfaces to receive application must be clean and free of debris, dirt, dust, efflorescence, grease, oils, curing agents, and cleaning solutions. Ensure that all surfaces are smooth and free of any irregularities. Repair all cracks with the appropriate patching material for the existing substrate. Painted or glossy surfaces should be sandblasted to expose cementitious substrate and ensure a proper bond. Just prior to application, dampen all surfaces that are to receive the ColorTek with clean, potable water.

MIXING

See appropriate ColorTek product data sheet for mixing instructions.

APPLICATION

See appropriate ColorTek product data sheet for application instructions.

CURING

Curing and/or drying time may vary due to climatic conditions. Drying should occur within 24 hours at an ambient and surface temperature of 70°F (21°C) and 55% R.H. When hot, dry, or windy conditions exist, protection should be provided. All freshly applied material must be protected from inclement weather until fully dry. Full adhesion strength should take one to four days. Full curing strength typically occurs in approximately 28 days.

NOTE: DO NOT moist cure

LIMITATIONS

DO NOT apply product when the ambient and surface temperature is below 40°F (4°C).* The ambient and surface temperature must maintain the above requirements until fully dry (See CURING). Material that is allowed to freeze before fully drying may suffer irreparable damage.

DO NOT add any other materials to the mixture of the product without written approval from Omega Products International.


DO NOT deviate in the mixing or application procedures contained in this, or any other Omega Product Data Sheets, without written approval from Omega Products International.

DO NOT apply ColorTek if there are contaminants on the receiving surface. Contaminates may include, but are not limited to, dust, debris, efflorescence, and/or oils.

DO NOT add any more water than prescribed.

DO NOT use excessive amounts of water when floating and/or troweling the texture.

NOTE: Failure to follow manufacturer's written specifications could result in the following, but not limited to spalling, cracking, peeling, chipping, delamination, discoloration, wash off, and overall system failure.

 To ensure proper hydration in cold weather applications (approximately 50°F to 32°F) use OmegaCure admix. Refer to OmegaCure data sheet for additional information.

Due to job conditions beyond the control of Omega Products International, we make no warranty as to the acceptance of the final color. The actual integrally colored finish should be applied on a sample section of the project and verified for color accuracy prior to the actual application process. See Omega Products International's Technical Bulletin OP813 on Jobsite Mockups. It is expressly understood and agreed that color, texture and pigment streaking variations are inherent in all integral colored products and these conditions are not considered defects.

CLEANING

Cleaning may be accomplished with water immediately after use.

SAFETY

Avoid contact with eyes or prolonged contact with skin. Wash thoroughly after handling. In case of eye contact, flush immediately with running water for at least 15 minutes. Consult a physician immediately. Do not take internally. Be sure to provide adequate ventilation in enclosed areas. Use of an approved respirator is recommended.

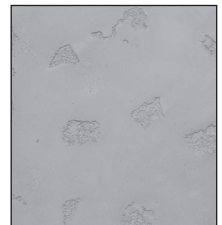
KEEP OUT OF REACH OF CHILDREN



Heavy Lace



Heavy Dash



Mission

NOTE: More textures may be achieved using this product. Please see the ColorTek Color Chart for more information or contact Omega Products International.

DISCLAIMER

Omega Products International [Manufacturer] MAKES NO WARRANTY OF MERCHANTABILITY OR FITNESS FOR A PARTICULAR PURPOSE WITH RESPECT TO THE PRODUCT(S) SOLD HEREIN. The recommendations, suggestions, statements and technical data are based on the best knowledge available to Manufacturer and are given for informational purposes ONLY and without any responsibility for their use. It is expressly understood and agreed, as a condition of the use of this product, that the buyer's sole and exclusive remedy for any claimed defective product against Manufacturer shall be the replacement of products actually proven to be defective. Handling and use of the products are beyond the control of Manufacturer; therefore, no warranty is made, expressed or implied, as to the results obtained from the use of the product or against any claims for infringement of patents resulting from use of the product. Under no circumstance shall Manufacturer be liable for incidental or consequential damages arising out of the use or the improper application of the product. Before applying the product, the user shall determine the suitability of the product for their independent use, assuming all risks and liability whatsoever in connection therewith. This writing constitutes a complete and exclusive statement of the understanding between Manufacturer and Buyer.

CLAIMS

Any Claimant shall notify Manufacturer immediately in writing of any alleged defect in the material. Claimant will provide Manufacturer with a reasonable and exclusive opportunity to investigate and test for the alleged defect. For any claim that is not valid Claimant agrees to pay Omega's reasonable charges, including travel and labor associated with investigation of such claim.

TECHNICAL ASSISTANCE

Technical assistance and information is available by calling Omega Products International at (951) 737-7447 or by email at info@omega-products.com.

WARRANTY

The following is made in lieu of all expressed and implied rights, warranties and conditions, statutory or otherwise. The manufacturer's only obligation shall be to replace such quantity of products proven to be defective within one year following the date of manufacture, provided that the alleged defective product is returned prepaid to the manufacturer's plant and is accompanied with proof of purchase and batch number.