



AkroFlex Semi-Smooth Finish

100% Acrylic, Interior/Exterior Finishes



Coverage

Approximately 130ft² to 150ft² (12.1m² to 13.9m²). Coverage may vary due to ambient temperature, surface temperature, surface porosity, mixing methods, and/or application methods.

Packaging

65lb (29.5kg), 5 gallon (18.9L) pails

Storage

1. Store pails in a cool, dry location.
2. Store at a temperature between 40°F (4°C) and 90°F (32°C).
3. Store out of direct sunlight.
4. Protect pails from weather and other damage.

Shelf Life

2 years

Color

Packaged white. Available in 3 bases: Pastel, Tint and Accent. May be factory pre-tinted or colored using the Omega Color Bottle System.

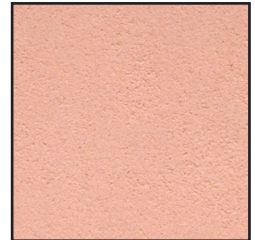
Permeability

15 perms

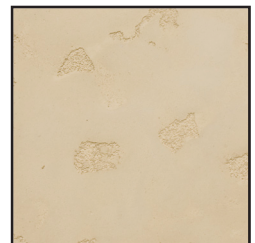
Product Description

Akriflex Semi-Smooth Finish is a 100% acrylic-based finish using the latest Dirt Pick-up Resistance (DPR) technology, which can produce a variety of textures depending on the application method. Semi-Smooth Finish will enhance the appearance of any plastered structure by providing a flexible, durable, integrally colored finish. Semi-Smooth Finish utilizes approximately 0.3mm aggregates and can be troweled to achieve an imperfect smooth Mission-style finish or Old World appearance.

Features	Benefits
100% Acrylic	Excellent adhesion and UV resistance
Integral Color	Lasting, uniform color that resists fading or discoloration; UV resistant
Crack Resistant	Acrylic polymers allow some elongation without cracking
Moisture Resistant	Helps resist water intrusion into the wall cavity
Easy to Clean	Resists dirt accumulation and may be rinsed clean with water
Vapor Permeable	Allows wall to naturally breath which aids drying and helps to prevent mold or blistering
Easy to Use	Premixed with no additives required; cleans up with water
VOC Compliant	Less than 27 g/L



Smooth



Cat Face



Mission

Basic Uses

Semi-Smooth Finishes are designed to be used with the AkroFlex EIF Systems and also as an interior or exterior finish. It is a suitable finish for Omega AkroTique.

Area of Use

Semi-Smooth Finishes may be applied to the following substrates. For best results, substrates should be prepared with AkroFlex Base Primer.

1. AkroFlex EIF System base coats
2. All Omega base coats
3. One coat stucco/brown coat/existing stucco
4. CMU/poured-in-place and/or tilt-up concrete/masonry
5. Properly prepared gypsum drywall (interior)
6. Other substrates as approved by Omega Products International

NOTE: More textures may be achieved using this product. Please see the AkroFlex Color Chart for more information or contact Omega Products International.

Optional Product Upgrades/Enhancements

PRODUCT	BENEFIT
Primer	Promotes bond strength, color consistency, and uniform suction, while increasing water resistance and finish coverage
Crack Isolation System	Supplementary system designed to mitigate surface cracking in new and existing plaster systems by integrating woven fiberglass mesh into the base coat or brown coat prior to applying the finish

Surface Preparation

All surfaces to receive application must be clean and free of loose debris, dirt, dust, efflorescence, grease, oils, curing agents, and cleaning solutions. Ensure that all surfaces are smooth and free of any irregularities. Repair all cracks with the appropriate patching material for the existing substrate. Painted or glossy surfaces must be roughened to ensure a proper bond. It is recommended that all approved substrates be coated with AkroFlex Base Primer to enhance the material's performance. One coat and three coat stucco products must be adequately cured and concrete must cure for a minimum of 28 days.

Mixing

1. AkroFlex Finishes must be thoroughly mixed prior to use with a paddle mixer. Refer to the Omega Color Bottle System Product Data Sheet for color mixing instructions.
2. If multiple pails are being used, intermix (box) pails to achieve color consistency.

NOTE: To ensure color consistency, always measure and add the same amount of water to each pail during mixing.

Application

AkroFlex Semi-Smooth may be applied using a hand application method or a machine sprayed method. Two coats may be required to achieve desired appearance. Smooth textures require two coats.

Hand Application Method

1. Ensure that the receiving surface has been properly prepared according to the Surface Preparation section of this Product Data Sheet.
2. Apply a uniform coat of the desired AkroFlex Semi-Smooth Finish, no thicker than the largest aggregate, to the substrate.
3. Immediately following the applicator, use a plastic float or stainless steel trowel in a consistent motion to obtain the desired finish.
4. Repeat steps 2 and 3 for second coat, if needed.

Machine Sprayed Method

1. Add desired amount of mixed material to sprayer.
2. Begin spraying material onto the receiving surface. Starting at a corner and not stopping until the opposite corner is reached. Avoid puddling.
3. To ensure consistent color, a uniform thickness must be maintained during the application process.
4. A true dash finish usually requires 2 to 3 coats.

Drying

Drying time may vary due to climatic conditions. Drying should occur within 24 hours at an ambient and surface temperature of 70°F (21°C) and 55% R.H. All freshly applied material must be protected from inclement weather until fully dry.

Limitations

DO NOT apply product when the ambient and surface temperature is below 40°F (4°C). Material that is allowed to freeze before fully drying may suffer irreparable damage.

DO NOT add any other materials to the mixture of the product without written approval from Omega Products International.

DO NOT deviate in the mixing or application procedures contained in this, or any other Omega Product Data Sheets, without written approval from Omega Products International.

DO NOT apply AkroFlex Finishes if there are contaminants on the receiving surface. Contaminates may include, but are not limited to, dust, debris, efflorescence, and/or oils.

DO NOT use a paddle mixer that exceeds 500 RPM.

NOTE: Failure to follow manufacturer's written specifications could result in the following, but not limited to spalling, cracking, peeling, chipping, delamination, discoloration, wash off, and overall system failure.

Due to job conditions beyond the control of Omega Products International, we make no warranty as to the acceptance of the final color. The actual integrally colored finish should be applied on a sample section of the project and verified for color accuracy prior to the actual application process.

Cleaning

Cleaning may be accomplished with water immediately after use.

Safety

Avoid contact with eyes or prolonged contact with skin. Wash thoroughly after handling. In case of eye contact, flush immediately with running water for at least 15 minutes. Consult a physician immediately. Do not take internally. Be sure to provide adequate ventilation in enclosed areas. Use of an approved respirator is recommended.

KEEP OUT OF REACH OF CHILDREN

www.omega-products.com

Disclaimer

Omega Products International [Manufacturer] MAKES NO WARRANTY OF MERCHANTABILITY OR FITNESS FOR A PARTICULAR PURPOSE WITH RESPECT TO THE PRODUCT(S) SOLD HEREIN. The recommendations, suggestions, statements and technical data are based on the best knowledge available to Manufacturer and are given for informational purposes ONLY and without any responsibility for their use. It is expressly understood and agreed, as a condition of the use of this product, that the buyer's sole and exclusive remedy for any claimed defective product against Manufac-

turer shall be the replacement of products actually proven to be defective. Handling and use of the products are beyond the control of Manufacturer; therefore, no warranty is made, expressed or implied, as to the results obtained from the use of the product or against any claims for infringement of patents resulting from use of the product. Under no circumstance shall Manufacturer be liable for incidental or consequential damages arising out of the use or the improper application of the product. Before applying the product, the user shall determine the suitability of the product

for his/her independent use, assuming all risks and liability whatsoever in connection therewith. This writing constitutes a complete and exclusive statement of the understanding between Manufacturer and Buyer.

Claims

Any Claimant shall notify Manufacturer immediately in writing of any alleged defect in the material. Claimant will provide Manufacturer with a reasonable and exclusive opportunity to investigate and test for the alleged defect.

For any claim that is not valid Claimant agrees to pay Omega's reasonable charges, including travel and labor associated with investigation of such claim.

Technical Assistance

Technical assistance and information is available by calling Omega Products International at (800) 600-6634 or FAX (951) 520-2594 or by e-mail at info@omega-products.com.

Warranty

The following is made in lieu of all expressed and implied rights, warranties and conditions, statutory or otherwise. The manufacturer's only obligation shall be to replace such quantity of products proven to be defective within one year following the date of manufacture, provided that the alleged defective product is returned prepaid to the manufacturer's plant and is accompanied with proof of purchase and batch number.