



AkroFlex Finishes

100% Acrylic, Interior / Exterior Coating



COVERAGE

Approximately 90ft² to 150ft²
(8.4m² to 13.9m²).

Coverage may vary due to ambient air temperature, surface temperature, surface porosity, mixing, and/or application methods.

PACKAGING

65lb (29.5kg),
5 gallon (18.9L) pails

STORAGE

1. Store pails in a cool, dry location.
2. Store at a temperature between 40°F (4°C) and 90°F (32°C).
3. Store out of direct sunlight.
4. Protect pails from weather and other damage.

SHELF LIFE

2 years

COLOR

Packaged white. Available in 3 bases: Pastel, Tint, and Accent. May be factory pretinted or colored using the Omega Color Bottle System.

PERMEABILITY

15 to 31 perms depending on finish

PRODUCT DESCRIPTION

AkroFlex Finishes are 100% acrylic based finishes using the latest Dirt Pickup Resistance (DPR) technology that are designed to add texture and color to approved exterior or interior surfaces. These products provide long lasting, weather-resistant, durable finishes that will resist discoloration, fading, or mold growth. A wide variety of textures are possible depending on the finish choice and application method. Refer to the individual AkroFlex Finish data sheets for additional information, including application instructions.

FEATURES

100% Acrylic

Integral Color

Crack Resistant

Moisture Resistant

Easy to Clean

Vapor Permeable

Easy to Use

VOC Compliant

BENEFITS

Excellent adhesion and UV resistance

Lasting, uniform color that resists fading or discoloration; UV resistant

Acrylic polymers allow some elongation without cracking

Helps resist water intrusion into the wall cavity

Resists dirt accumulation and may be rinsed clean with water

Allows wall to naturally breath which aids drying and helps to prevent mold or blistering

Premixed with no additives required; cleans up with water

Less than 27 g/L

BASIC USES

AkroFlex Finishes are designed to be used with the AkroFlex EIF Systems and also as an interior or exterior finish. It is a suitable finish for AkroTique.

AREA OF USES

AkroFlex Finishes may be applied to the following properly prepared substrates. For best results, substrates should be prepared with AkroFlex Base Primer.

1. AkroFlex EIFS System base coats
2. All Omega base coats
3. One coat stucco/brown coat/existing stucco
4. CMU/poured-in-place and/or tilt-up concrete/masonry
5. Properly prepared gypsum drywall (interior)
6. Other substrates as approved by Omega Products International

Application Instructions



SEMI-SMOOTH

Semi-Smooth Finish utilizes approximately 0.3 mm quartz aggregates and can be troweled to achieve an imperfect smooth Mission-style or Old World appearance. Ideal for AkroTique.



SAHARA SAND

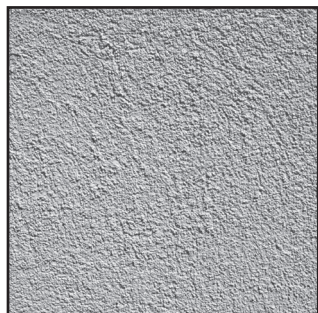
Sahara Sand Finishes utilize silica aggregates and come in the following options:

Sahara Sand Fine (-0.8mm):

uniform fine sand-like finish.

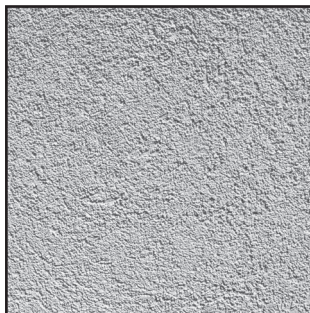
Sahara Sand (-1mm): uniform medium sand-like finish.

Requires Desert Series color bottle.



DELTA

Delta Finish utilizes approximately 1.5 mm quartz aggregates and can be floated to create a medium sand finish or troweled to achieve a lace texture.



PEBBLE BEACH

Pebble Beach Finish is part of the Desert Series Finishes and utilizes ~1.5 mm silica aggregates to produce a uniform medium sand finish. Requires Desert Series color bottle.



CIRCLETEX

CircleTex Finishes utilize quartz aggregates and can produce a true worm driven appearance. It is available in either a medium (~1.5 mm) or coarse (3 mm) aggregate finish. (CircleTex Coarse pictured)



MALIBU

Malibu Finishes utilize quartz aggregates and come in the following options:

Malibu 12 (~1.5 mm): Coarse sand finish with slight swirl appearance.

Malibu 16 (~1.2 mm): Medium sand finish with slight swirl appearance.

Malibu 20 (~0.8 mm): Fine sand finish with reflective quartz aggregate.

Malibu Fine (~0.8 mm): Imperfect smooth type finish with irregularities. (Malibu 16 pictured)



MULTITEX

MultiTex utilizes 0.1mm quartz aggregates and can be troweled to achieve a very smooth Mission-style finish or Old World appearance.

DISCLAIMER

Omega Products International [Manufacturer] MAKES NO WARRANTY OF MERCHANTABILITY OR FITNESS FOR A PARTICULAR PURPOSE WITH RESPECT TO THE PRODUCT(S) SOLD HEREIN. The recommendations, suggestions, statements and technical data are based on the best knowledge available to Manufacturer and are given for informational purposes ONLY and without any responsibility for their use. It is expressly understood and agreed, as a condition of the use of this product, that the buyer's sole and exclusive remedy for any claimed defective product against Manufacturer shall be the replacement of products actually proven to be defective. Handling and use of the products are beyond the control of Manufacturer; therefore, no warranty is made, expressed or implied, as to the results obtained from the use of the product or against any claims for infringement of patents resulting from use of the product. Under no circumstance shall Manufacturer be liable for incidental or consequential damages arising out of the use or the improper application of the product. Before applying the product, the user shall determine the suitability of the product for their independent use, assuming all risks and liability whatsoever in connection therewith. This writing constitutes a complete and exclusive statement of the understanding between Manufacturer and Buyer.

CLAIMS

Any Claimant shall notify Manufacturer immediately in writing of any alleged defect in the material. Claimant will provide Manufacturer with a reasonable and exclusive opportunity to investigate and test for the alleged defect. For any claim that is not valid Claimant agrees to pay Omega's reasonable charges, including travel and labor associated with investigation of such claim.

TECHNICAL ASSISTANCE

Technical assistance and information is available by calling Omega Products International at (951) 737-7447 or by email at info@omega-products.com.

WARRANTY

The following is made in lieu of all expressed and implied rights, warranties and conditions, statutory or otherwise. The manufacturer's only obligation shall be to replace such quantity of products proven to be defective within one year following the date of manufacture, provided that the alleged defective product is returned prepaid to the manufacturer's plant and is accompanied with proof of purchase and batch number.