

# INDUSTRY LEADING INNOVATION

Omega Products International produces a comprehensive line of stucco and acrylic finishes that create limitless design possibilities. We offer 45 standard stucco colors and specialize in matching a wide spectrum of custom colors utilizing our state-of-the-art color labs. All products are manufactured in the USA in our high-tech facilities using the finest quality materials and pigments to ensure product consistency and vibrant colors.

Omega Products is committed to customer satisfaction by offering the best stucco products, admixtures and service. We strive to maintain our leadership role in the industry and back our products with renowned technical support and warranty plans.

## OMEGACOAT™ and OMEGACOAT PLUS™ Better than painting your stucco!

Re-color or refresh stucco finishes using OmegaCoat and new OmegaCoat Plus. OmegaCoat is a spray-on cement-based coating (fog coat), which cures to become an integral part of the stucco surface and maintains original finish characteristics. Fog coat is much more resistant to fading, chipping, or peeling than paint. OmegaCoat Plus is a premium fog coat with improved adhesion and water-resistance, plus it reduces the likelihood of color streaking and efflorescence.



## TRAVERTINO™

A cementitious interior/exterior finish designed to achieve a variety of stone appearances, such as travertine, limestone, and sandstone.

Travertino finish is available in the colors shown in this chart.



**COLORTEK™** is a premium, factory blended, stucco finish manufactured from portland cement, hydrated lime, graded aggregates, and proprietary performance enhancing additives. ColorTek comes in five aggregate combinations that allow design flexibility and a variety of finish textures. The following aggregate combinations are available, in order of aggregate size:

FINISHES	DESCRIPTION
Coarse	Used to create heavy laced texture, sand finish, or machine dash finish.
16/20	Used to create traditional texture, sand finish, or machine dash finish.
20/30	Used to create a fine texture or sand finish.
30/30	Used to create a uniform fine sand finish.
SmoothCoat	Used to create a smooth Santa Barbara or Mission type finish.

ColorTek Stucco is available in Base 2 (grey), Base 10 (white), Base 1 (white/grey) and Base 5 (dark grey) which may be colored in the field using the Omega ColorPak System. Alternatively, ColorTek is offered as a factory mixed colored stucco. Minimum quantities may apply when ordering factory blended products.

FEATURES	BENEFITS
Integral Color	Lasting, uniform color that resists fading or discoloration; UV resistant
Durable	Long life-cycle with minimal maintenance
Fire-Resistant	Noncombustible
Impact Resistant	Resists impact damage
Economical	Lower cost and easy to apply
Insect Resistant	Impervious to termites, rot, and fungus

# STUCCO COLOR & TEXTURE COLLECTION



# MANUFACTURING A COMPLETE FAMILY OF STUCCO WALL SYSTEMS & FINISHES



- ColorTek Stucco Finishes
- 100% Acrylic-Based Stucco Finishes
- Crack Isolation Systems
- Diamond Wall One Coat Stucco Systems
- Super Cement Three Coat Systems
- Masonry Adhered Veneer Systems (MAVS)
- AkroFlex Exterior Insulation & Finish Systems (EIFS)
- Water & Air Barrier Coatings
- Architectural Foam Shape Coatings
- Performance Enhancing Admixtures
- Bonders, Cleaners, and Sealers
- Primers and Coatings



**OmegaFlex™** was the first 100% acrylic stucco finishes designed for exclusive use over cement-based substrates. OmegaFlex can create a look similar to traditional portland cement stucco finishes while providing a more uniform color, less efflorescence, improved water resistance, and less cracking. These attributes make OmegaFlex the obvious choice for both commercial and residential projects. It is offered in 63 standard colors that can be viewed in the Omega Acrylic Color and Texture Collection catalog.



**MAVS Masonry Mortar & Grout** is a premium mortar used for grouting veneer, thin brick, pavers, precast, and similar joints; plus, for setting and grouting full brick, CMU, and block. It is available in a range of standard and custom colors, including the stucco colors shown in this chart. MAVS Masonry Mortar & Grout is part of Omega's Masonry Adhered Veneer Systems (MAVS) family of products that are engineered to handle all levels of masonry applications. Manufactured to the highest quality control standards and backed by Omega's industry-leading system warranties, MAVS is an excellent choice for your next masonry project.

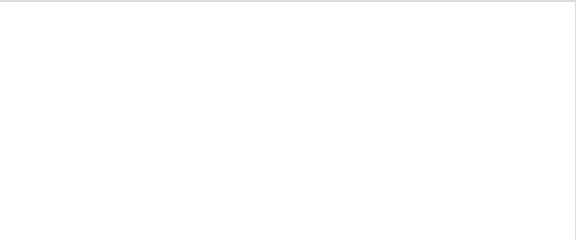


**E-FX™** Efflorescence Reducing Admixture is specially formulated to reduce the occurrence of efflorescence and improve the freeze-thaw durability of stucco, fog coat, and similar products. Adding E-FX during mixing offers enhanced protection from the elements that attack stucco surfaces while retaining the natural surface appearance and vapor permeability.



Omega Products International – Corporate  
1681 California Ave. Corona, CA 92881  
Phone: (951) 737-7447 • Fax: (951) 520-2594  
info@omega-products.com

DISTRIBUTED BY



OMEGA PRODUCTS ARE PROUDLY MADE IN THE USA  
For SDS, Data Sheets, System Specs, Technical Support Visit:  
omega-products.com

PRIVATELY OWNED  
AMERICAN MADE

A FULL LINE OF PREMIUM PRODUCTS FOR YOUR WALL SYSTEM NEEDS  
omega-products.com

5420 Aldrin Court  
Bakersfield, CA 93313  
Phone: (661) 835-0155  
Fax: (661) 835-0402

5576 Wynn Road  
Las Vegas, NV 89118  
Phone: (702) 739-9040  
Fax: (702) 739-9059

8111 Fruitridge Road  
Sacramento, CA 95826  
Phone: (916) 635-3335  
Fax: (916) 635-8995

6101 Dexter Street  
Commerce City, CO 80022  
Phone: (303) 736-4470  
Fax: (303) 287-4053

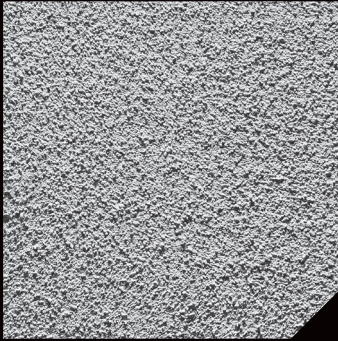


COLORTEK

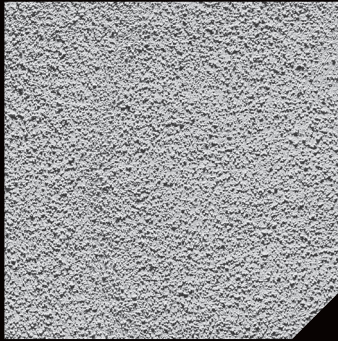
PREMIUM EXTERIOR STUCCO

TEXTURES & COLORS

ColorTek can create a wide variety of attractive textures to suit your needs. The most popular texture varieties are shown below. Actual texture results depend on the application method, job-site conditions, and other factors. The cost to achieve these textures vary due to the material and labor required. Consult your applicator for actual costs.



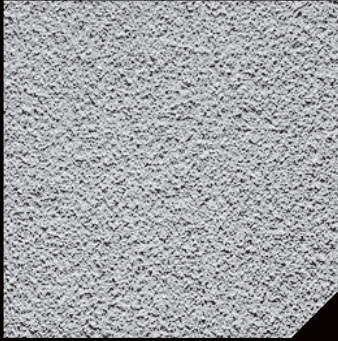
SAND 16/20



SAND 20/30



SAND 30/30



LIGHT DASH



HEAVY DASH



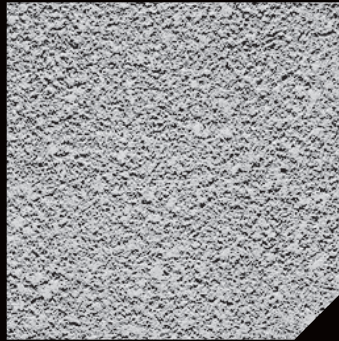
FRIEZE



LIGHT LACE



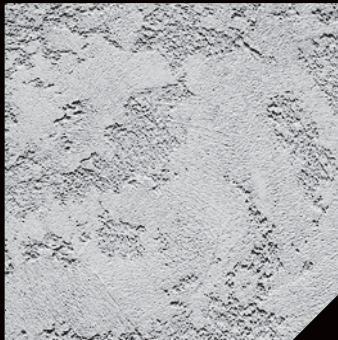
HEAVY LACE



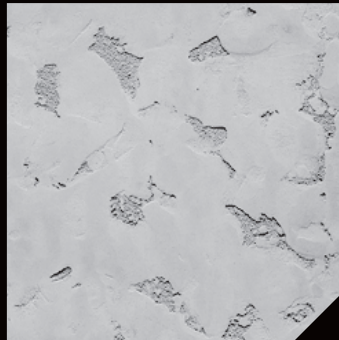
KNOCKDOWN DASH



SMOOTH COAT



GLACIER



CAT FACE

15 BIRCH  
WHITE  
BASE 2

405 SURREY  
BEIGE  
BASE 2

NEW COLORS ADDED

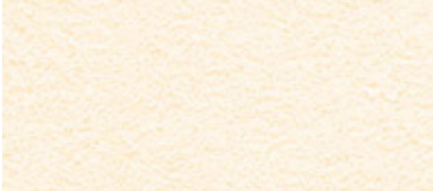
Twelve new colors have been added to the chart, which are identified by the ♦ symbol. The following twelve colors from the previous chart have been removed but are still available to order: 14, 403, 407, 408, 411, 413, 418, 421, 424, 425, 427, and 431.



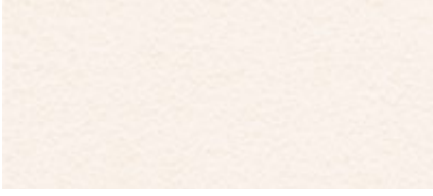
10 OMEGA WHITE BASE 10



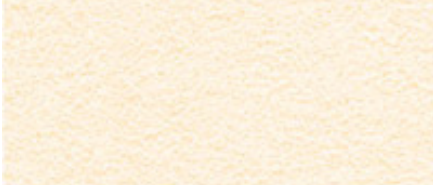
12 CHENILLE BASE 10



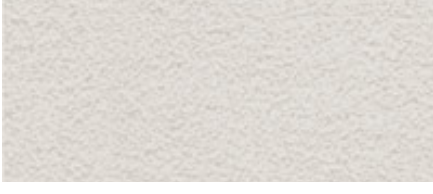
15 BIRCH WHITE BASE 2



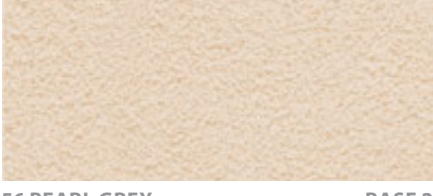
18 COCONUT BASE 10



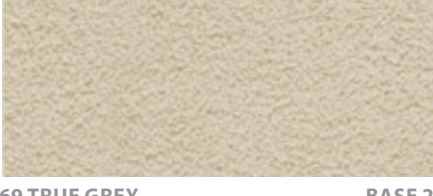
20 IVORY BASE 10



35 CLOUD GREY BASE 2



56 PEARL GREY BASE 2



69 TRUE GREY BASE 2



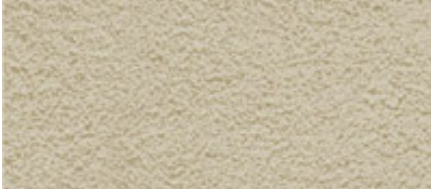
221 HARVEST GOLD BASE2



232 SONOMA BASE 2



233 CHIMAYO BASE 2



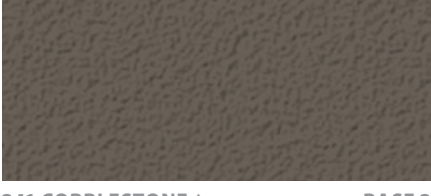
236 ANTIQUE GREEN BASE 2



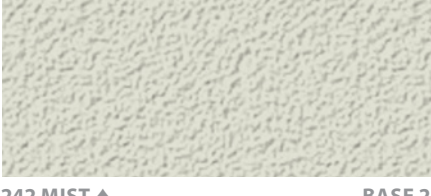
237 ROCK GREEN BASE 2



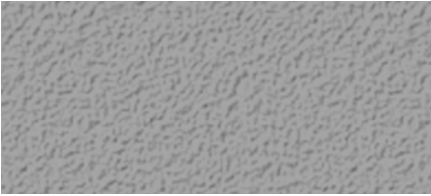
240 JET GREY ♦ BASE 2



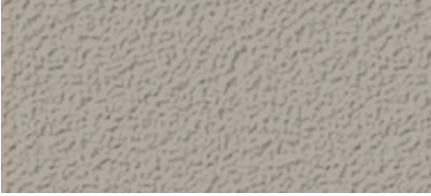
241 COBBLESTONE ♦ BASE 2



242 MIST ♦ BASE 2



243 CASTLE ROCK ♦ BASE 2



244 WOLF ♦ BASE 2



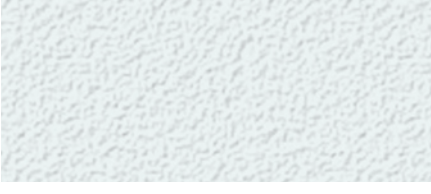
245 SHORELINE ♦ BASE 2



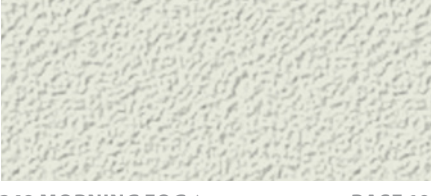
246 ROYAL TAUPE ♦ BASE 2



247 COOL GREY ♦ BASE 2



248 ARCTIC ICE ♦ BASE 10



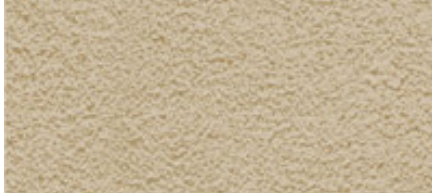
249 MORNING FOG ♦ BASE 10



250 BONE ♦ BASE 2



251 LACE ♦ BASE 10



400 TAVERN TAUPE BASE 2



404 BARN SWALLOW BASE 2



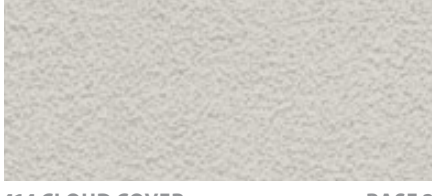
405 SURREY BEIGE BASE 2



409 TOFFEE CRUNCH BASE 2



412 BISON BEIGE BASE 2



414 CLOUD COVER BASE 2



415 ONIONSKIN TAN BASE 2



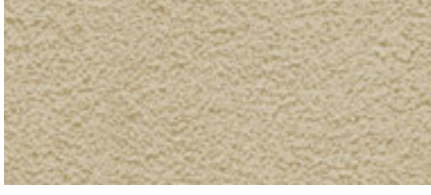
416 SAFARI TAN BASE 2



419 LIGHT TOAST BASE 10



420 FLORAL WHITE BASE 10



422 GREAT WALL BASE 2



426 STILL CREEK BASE 2



429 SIERRA LEONE BASE 2



430 MOCHA BASE 2



432 MILKY QUARTZ BASE 10



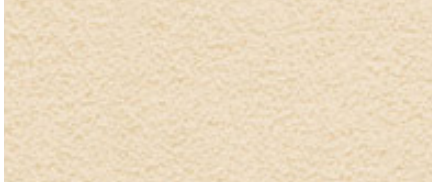
433 PRAIRIE DOG BASE 2



434 VANILLA CREAM BASE 2



435 BUTTERSCOTCH BASE 2



437 ROUGH KHAKI BASE 2



438 MOJAVE SUNSET BASE 2

**IMPORTANT NOTE:** The colors represented by these samples are approximate color only. Actual color will vary due to climatic conditions, job conditions, method of application, mixing techniques, and other factors that are beyond the control of Omega Products International. Final selection must be made from actual product applied by the applicator under actual job conditions to ensure color accuracy.

