



Table of Contents

AWM 01 APPLICATION OVER APPROVED SHEATHING

AWM 02 TYPICAL BOARD LAYOUT FOR STRUCTURAL PENETRATIONS

AWM 03 EPS INSULATION BOARD LAYOUT OPTIONAL MECH ATTACHMENT

AWM 04 TYPICAL AESTHETIC REVEAL

AWM 05 TYPICAL OR HEAVY DUTY CORNER DETAILS

AWM 06 TYPICAL AESTHETIC PLANT-ON

AWM 07 TYPICAL SOFFIT DETAIL

AWM 08 TYPICAL DIRECT APPLIED SOFFIT DETAIL

AWM 09 TYPICAL SOFFIT VENT DETAIL

AWM 10 TYPICAL TERMINATION AT FOUNDATION

AWM 11 TYPICAL TERMINATION AT DISSIMILAR MATERIALS

AWM 12 TYPICAL TERMINATION AT WINDOW HEAD AND SILL

AWM 13 TYPICAL TERMINATION AT WINDOW JAMB

AWM 14 TYPICAL TERMINATION AT DOOR JAMB

AWM 15 TYPICAL TERMINATION AT DOOR HEAD

AWM 16 TYPICAL TERMINATION AT DECK

AWM 17 TYPICAL PIPE OR CONDUIT PENETRATION

AWM 18 TYPICAL LIGHT PENETRATION

AWM 19 TYPICAL ATTACHMENT

AWM 20 TYPICAL EXPANSION JOINTS

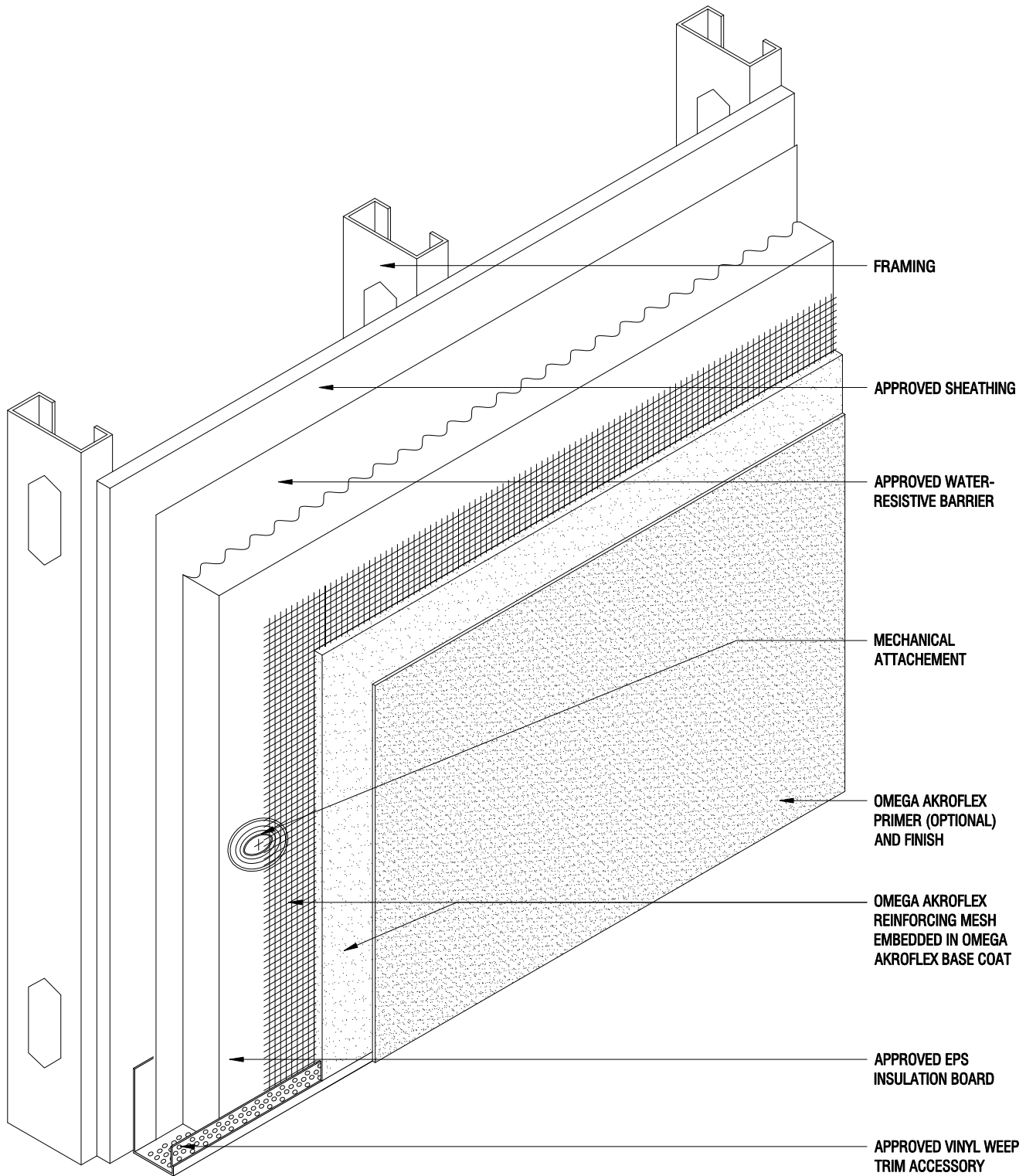
AWM 21 TYPICAL PARAPET WITH METAL CAP

AWM 22 ROOF/WALL KICK-OUT FLASHING DETAIL

AWM 23 HIGH IMPACT ASSEMBLY

DISCLAIMER

Omega Products International [Manufacturer] MAKES NO WARRANTY OF MERCHANTABILITY OR FITNESS FOR A PARTICULAR PURPOSE WITH RESPECT TO THE PRODUCT(S) SOLD HEREIN. The recommendations, suggestions, statements and technical data are based on the best knowledge available to Manufacturer and are given for informational purposes ONLY and without any responsibility for their use. It is expressly understood and agreed, as a condition of the use of this product, that the buyer's sole and exclusive remedy for any claimed defective product against Manufacturer shall be the replacement of products actually proven to be defective. Handling and use of the products are beyond the control of Manufacturer; therefore, no warranty is made, expressed or implied, as to the results obtained from the use of the product or against any claims for infringement of patents resulting from use of the product. Under no circumstance shall Manufacturer be liable for incidental or consequential damages arising out of the use or the improper application of the product. Before applying the product, the user shall determine the suitability of the product for his/her independent use, assuming all risks and liability whatsoever in connection therewith. This writing constitutes a complete and exclusive statement of the understanding between Manufacturer and Buyer.



FRAMING

APPROVED SHEATHING

APPROVED WATER-RESISTIVE BARRIER

MECHANICAL ATTACHEMENT

OMEGA AKROFLEX PRIMER (OPTIONAL) AND FINISH

OMEGA AKROFLEX REINFORCING MESH EMBEDDED IN OMEGA AKROFLEX BASE COAT

APPROVED EPS INSULATION BOARD

APPROVED VINYL WEEP TRIM ACCESSORY

THE ARCHITECTURE, ENGINEERING, AND DESIGN OF THE PROJECT USING OMEGA PRODUCTS IS THE RESPONSIBILITY OF THE PROJECT'S DESIGN PROFESSIONAL. ALL SYSTEMS MUST COMPLY WITH LOCAL BUILDING CODES AND STANDARDS. THIS DETAIL IS FOR GENERAL INFORMATION AND GUIDANCE ONLY, AND OMEGA INC. SPECIFICALLY DISCLAIMS ANY LIABILITY FOR THE USE OF THIS DETAIL AND FOR THE ARCHITECTURE, DESIGN, ENGINEERING, OR WORKMANSHIP OF ANY PROJECT. THE PROJECT DESIGN PROFESSIONAL DETERMINES, IN ITS SOLE DISCRETION, WHETHER THIS DETAIL OR A FUNCTIONALLY EQUIVALENT ALTERNATIVE IS BEST SUITED FOR THE THE PROJECT. USE OF A FUNCTIONALLY EQUIVALENT DETAIL DOES NOT VIOLATE OMEGA'S WARRANTY. THIS DETAIL IS SUBJECT TO CHANGE WITHOUT NOTICE. CONTACT OMEGA TO INSURE YOU HAVE THE MOST RECENT VERSION.



CORPORATE OFFICE
 1681 CALIFORNIA AVE., CORONA, CA 92881
 E-MAIL: INFO@OMEGA-PRODUCTS.COM
 WEBSITE: WWW.OMEGA-PRODUCTS.COM

AKROFLEX WM EIFS DETAIL

APPLICATION OVER APPROVED SHEATHING

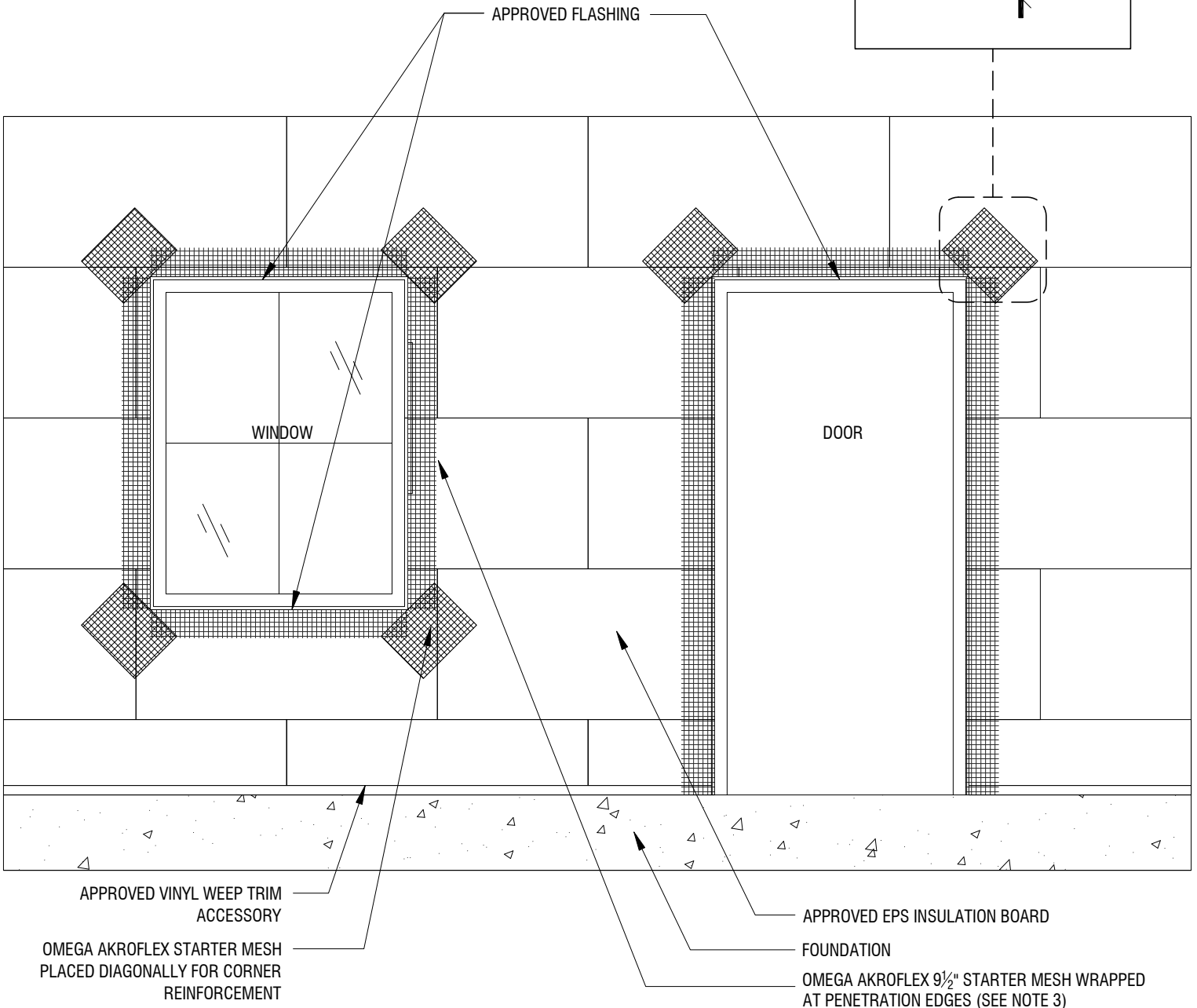
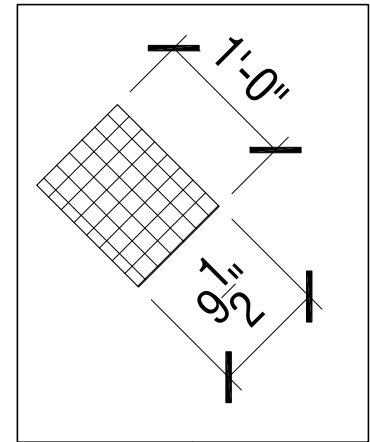
SCALE: 3"=1'-0"

DRAWING NO.: AWM 01.00

DRAWN: FEBRUARY 2013

NOTES

1. EPS BOARD JOINTS SHALL BE STAGGERED AND SHALL NOT ALIGN WITH SHEATHING JOINTS.
2. EPS BOARD JOINTS SHALL NOT ALIGN WITH THE CORNERS OF OPENINGS
3. APPROVED VINYL ACCESSORY MAY BE USED IN LIEU OF WRAPPED MESH.



THE ARCHITECTURE, ENGINEERING, AND DESIGN OF THE PROJECT USING OMEGA PRODUCTS IS THE RESPONSIBILITY OF THE PROJECT'S DESIGN PROFESSIONAL. ALL SYSTEMS MUST COMPLY WITH LOCAL BUILDING CODES AND STANDARDS. THIS DETAIL IS FOR GENERAL INFORMATION AND GUIDANCE ONLY, AND OMEGA INC. SPECIFICALLY DISCLAIMS ANY LIABILITY FOR THE USE OF THIS DETAIL AND FOR THE ARCHITECTURE, DESIGN, ENGINEERING, OR WORKMANSHIP OF ANY PROJECT. THE PROJECT DESIGN PROFESSIONAL DETERMINES, IN ITS SOLE DISCRETION, WHETHER THIS DETAIL OR A FUNCTIONALLY EQUIVALENT ALTERNATIVE IS BEST SUITED FOR THE THE PROJECT. USE OF A FUNCTIONALLY EQUIVALENT DETAIL DOES NOT VIOLATE OMEGA'S WARRANTY. THIS DETAIL IS SUBJECT TO CHANGE WITHOUT NOTICE. CONTACT OMEGA TO INSURE YOU HAVE THE MOST RECENT VERSION.



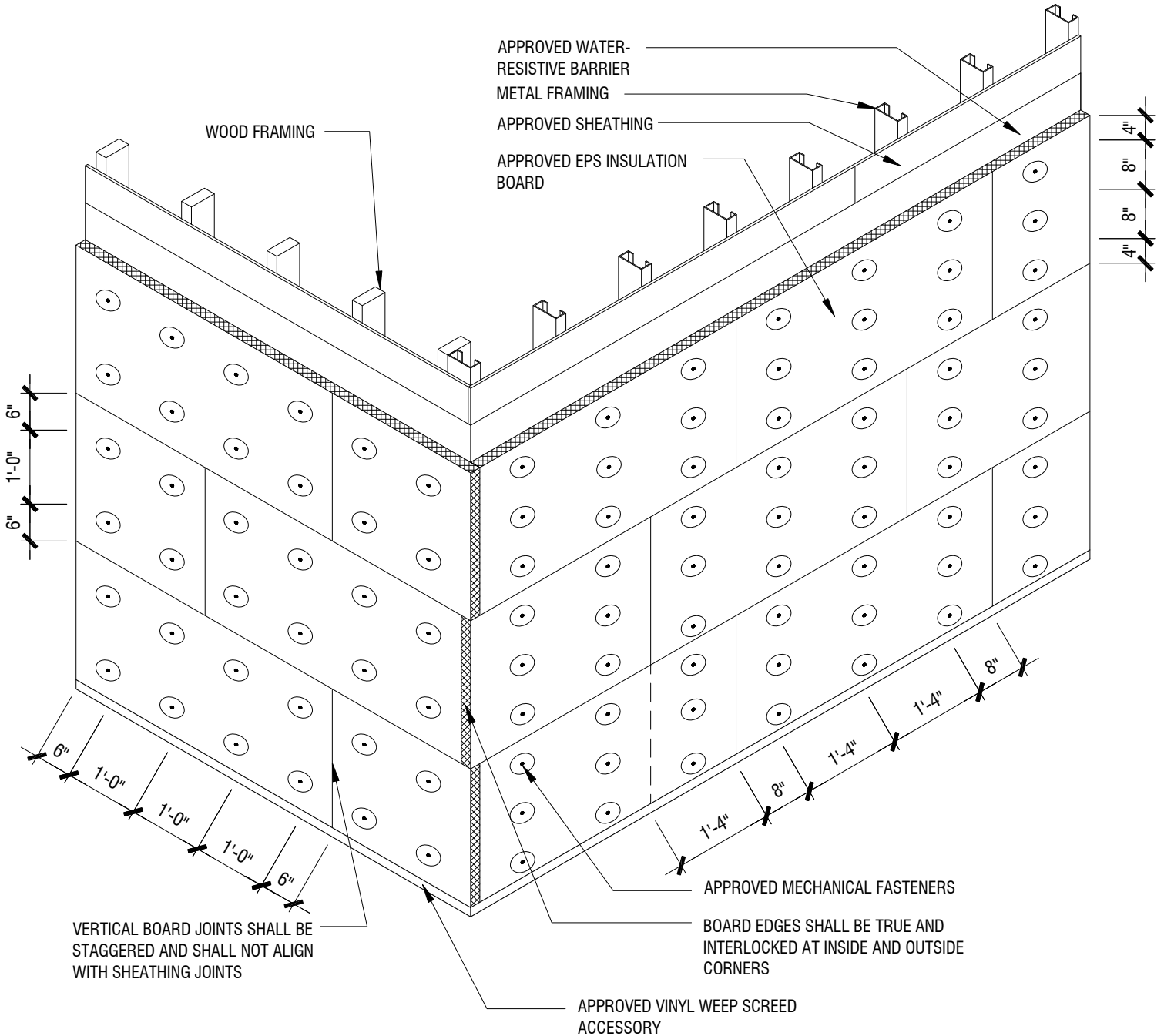
CORPORATE OFFICE
 1681 CALIFORNIA AVE., CORONA, CA 92881
 E-MAIL: INFO@OMEGA-PRODUCTS.COM
 WEBSITE: WWW.OMEGA-PRODUCTS.COM

AKROFLEX WM EIFS DETAIL

TYPICAL BOARD LAYOUT FOR STRUCTURAL PENETRATIONS

NOTES

1. FASTENER SPACING MAY VARY DUE TO FRAMING AND OR FASTENER MANUFACTURERS SPECIFICATIONS



THE ARCHITECTURE, ENGINEERING, AND DESIGN OF THE PROJECT USING OMEGA PRODUCTS IS THE RESPONSIBILITY OF THE PROJECT'S DESIGN PROFESSIONAL. ALL SYSTEMS MUST COMPLY WITH LOCAL BUILDING CODES AND STANDARDS. THIS DETAIL IS FOR GENERAL INFORMATION AND GUIDANCE ONLY, AND OMEGA INC. SPECIFICALLY DISCLAIMS ANY LIABILITY FOR THE USE OF THIS DETAIL AND FOR THE ARCHITECTURE, DESIGN, ENGINEERING, OR WORKMANSHIP OF ANY PROJECT. THE PROJECT DESIGN PROFESSIONAL DETERMINES, IN ITS SOLE DISCRETION, WHETHER THIS DETAIL OR A FUNCTIONALLY EQUIVALENT ALTERNATIVE IS BEST SUITED FOR THE THE PROJECT. USE OF A FUNCTIONALLY EQUIVALENT DETAIL DOES NOT VIOLATE OMEGA'S WARRANTY. THIS DETAIL IS SUBJECT TO CHANGE WITHOUT NOTICE. CONTACT OMEGA TO INSURE YOU HAVE THE MOST RECENT VERSION.

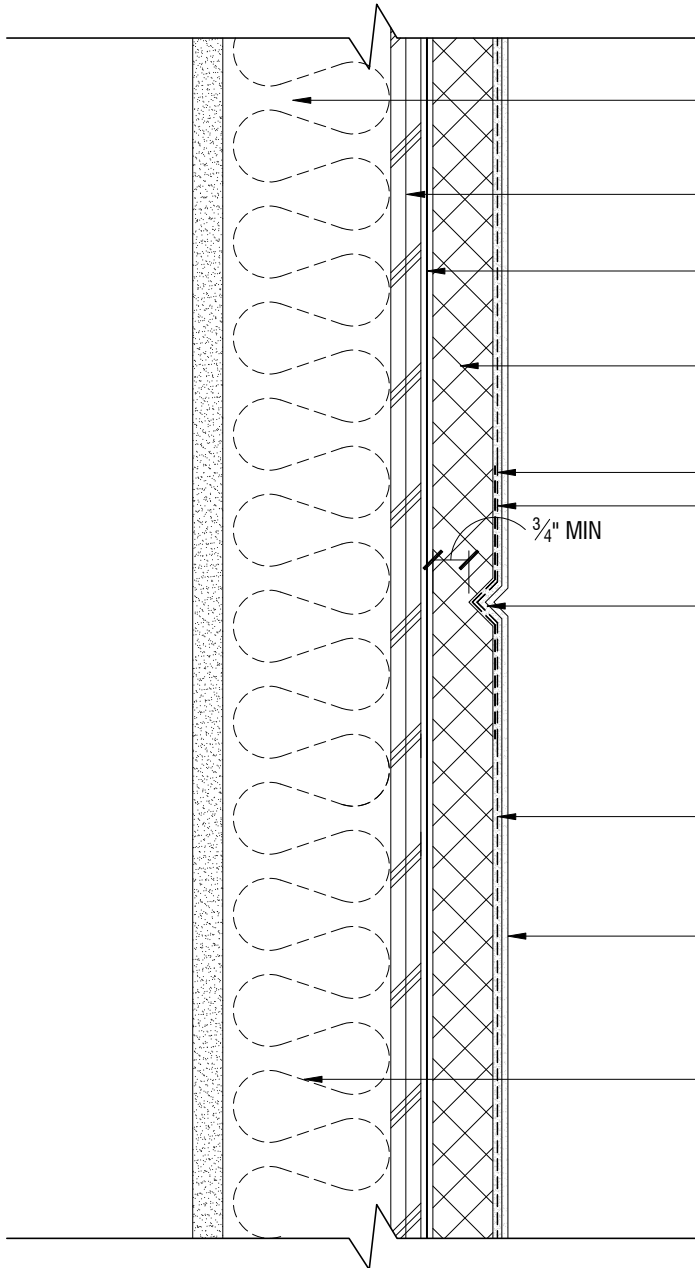
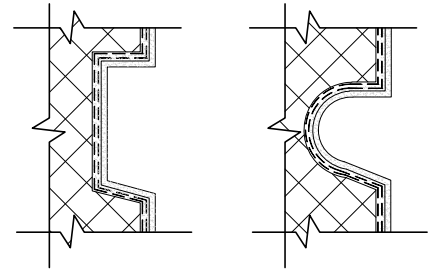


CORPORATE OFFICE
 1681 CALIFORNIA AVE., CORONA, CA 92881
 E-MAIL: INFO@OMEGA-PRODUCTS.COM
 WEBSITE: WWW.OMEGA-PRODUCTS.COM

AKROFLEX WM EIFS DETAIL

**EPS INSULATION BOARD LAYOUT
 MECH ATTACHMENT**

ALTERNATE REVEAL SHAPES



- FRAMING
- APPROVED SHEATHING
- APPROVED WATER-RESISTIVE BARRIER
- APPROVED EPS INSULATION BOARD
- OMEGA AKROFLEX STARTER MESH
- LAP STARTER MESH A MINIMUM OF 2½ INCHES
- 3/4" MIN
- AESTHETIC REVEAL
- OMEGA AKROFLEX REINFORCING MESH EMBEDDED IN OMEGA AKROFLEX BASE COAT
- OMEGA AKROFLEX PRIMER (OPTIONAL) AND FINISH
- INSULATION WHERE OCCURS

THE ARCHITECTURE, ENGINEERING, AND DESIGN OF THE PROJECT USING OMEGA PRODUCTS IS THE RESPONSIBILITY OF THE PROJECT'S DESIGN PROFESSIONAL. ALL SYSTEMS MUST COMPLY WITH LOCAL BUILDING CODES AND STANDARDS. THIS DETAIL IS FOR GENERAL INFORMATION AND GUIDANCE ONLY, AND OMEGA INC. SPECIFICALLY DISCLAIMS ANY LIABILITY FOR THE USE OF THIS DETAIL AND FOR THE ARCHITECTURE, DESIGN, ENGINEERING, OR WORKMANSHIP OF ANY PROJECT. THE PROJECT DESIGN PROFESSIONAL DETERMINES, IN ITS SOLE DISCRETION, WHETHER THIS DETAIL OR A FUNCTIONALLY EQUIVALENT ALTERNATIVE IS BEST SUITED FOR THE THE PROJECT. USE OF A FUNCTIONALLY EQUIVALENT DETAIL DOES NOT VIOLATE OMEGA'S WARRANTY. THIS DETAIL IS SUBJECT TO CHANGE WITHOUT NOTICE. CONTACT OMEGA TO INSURE YOU HAVE THE MOST RECENT VERSION.



CORPORATE OFFICE
 1681 CALIFORNIA AVE., CORONA, CA 92881
 E-MAIL: INFO@OMEGA-PRODUCTS.COM
 WEBSITE: WWW.OMEGA-PRODUCTS.COM

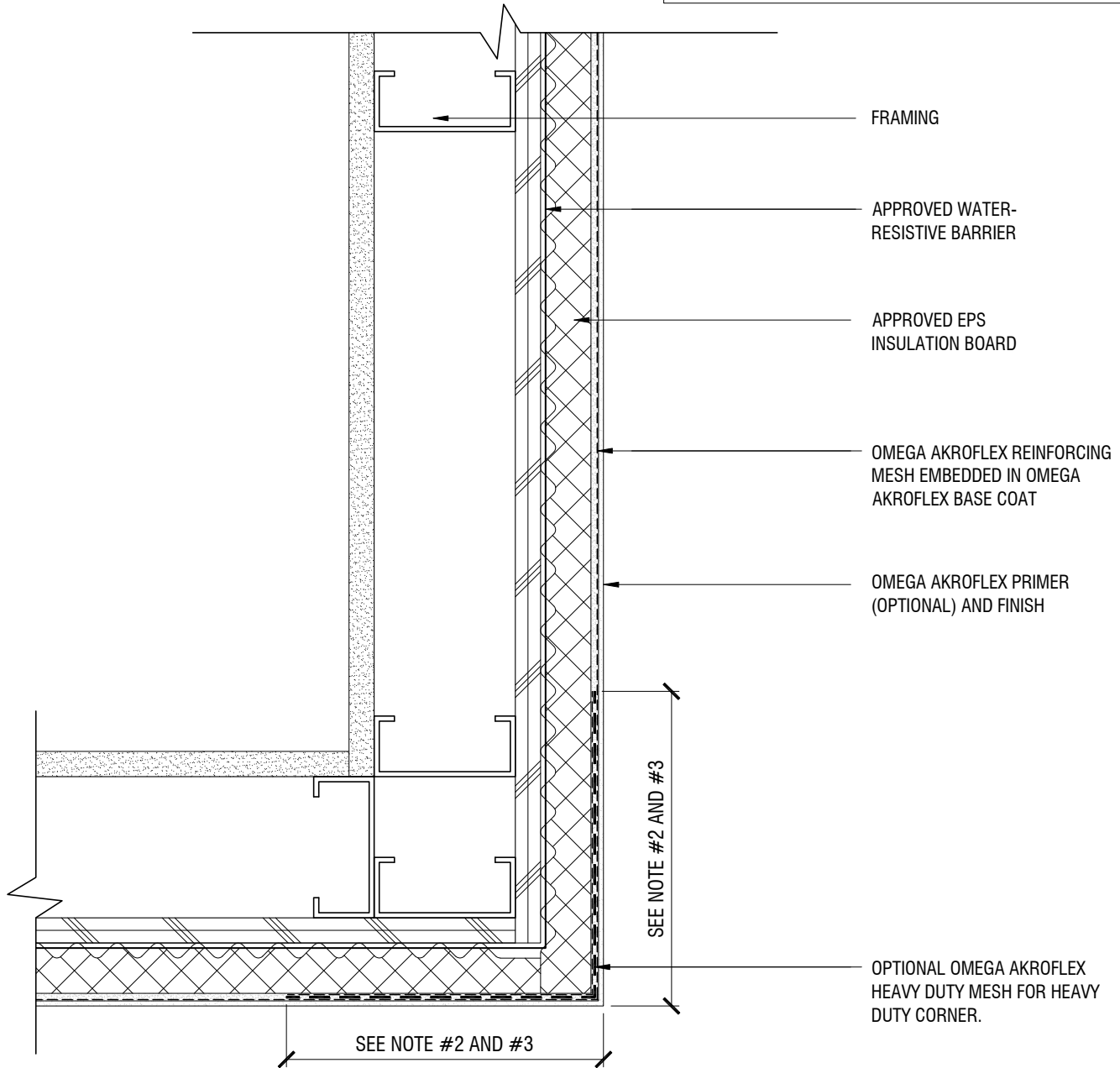
AKROFLEX WM EIFS DETAIL

TYPICAL AESTHETIC REVEAL

SCALE: 3"=1'-0" | DRAWING NO.: AWM 04.00 | DRAWN: JUNE 2009

NOTES

1. DOUBLE WRAP OUTSIDE CORNERS WITH REINFORCING MESH OR USE CORNER MESH
2. FIELD MESH SHALL NOT BE LAPPED WITHIN 8" OF CORNER
3. FOR OPTIONAL HEAVY DUTY CORNER, HEAVY DUTY MESH SHALL BE BUTTED AT CORNER EDGE. DO NOT LAP



THE ARCHITECTURE, ENGINEERING, AND DESIGN OF THE PROJECT USING OMEGA PRODUCTS IS THE RESPONSIBILITY OF THE PROJECT'S DESIGN PROFESSIONAL. ALL SYSTEMS MUST COMPLY WITH LOCAL BUILDING CODES AND STANDARDS. THIS DETAIL IS FOR GENERAL INFORMATION AND GUIDANCE ONLY, AND OMEGA INC. SPECIFICALLY DISCLAIMS ANY LIABILITY FOR THE USE OF THIS DETAIL AND FOR THE ARCHITECTURE, DESIGN, ENGINEERING, OR WORKMANSHIP OF ANY PROJECT. THE PROJECT DESIGN PROFESSIONAL DETERMINES, IN ITS SOLE DISCRETION, WHETHER THIS DETAIL OR A FUNCTIONALLY EQUIVALENT ALTERNATIVE IS BEST SUITED FOR THE THE PROJECT. USE OF A FUNCTIONALLY EQUIVALENT DETAIL DOES NOT VIOLATE OMEGA'S WARRANTY. THIS DETAIL IS SUBJECT TO CHANGE WITHOUT NOTICE. CONTACT OMEGA TO INSURE YOU HAVE THE MOST RECENT VERSION.



CORPORATE OFFICE
1681 CALIFORNIA AVE., CORONA, CA 92881
E-MAIL: INFO@OMEGA-PRODUCTS.COM
WEBSITE: WWW.OMEGA-PRODUCTS.COM

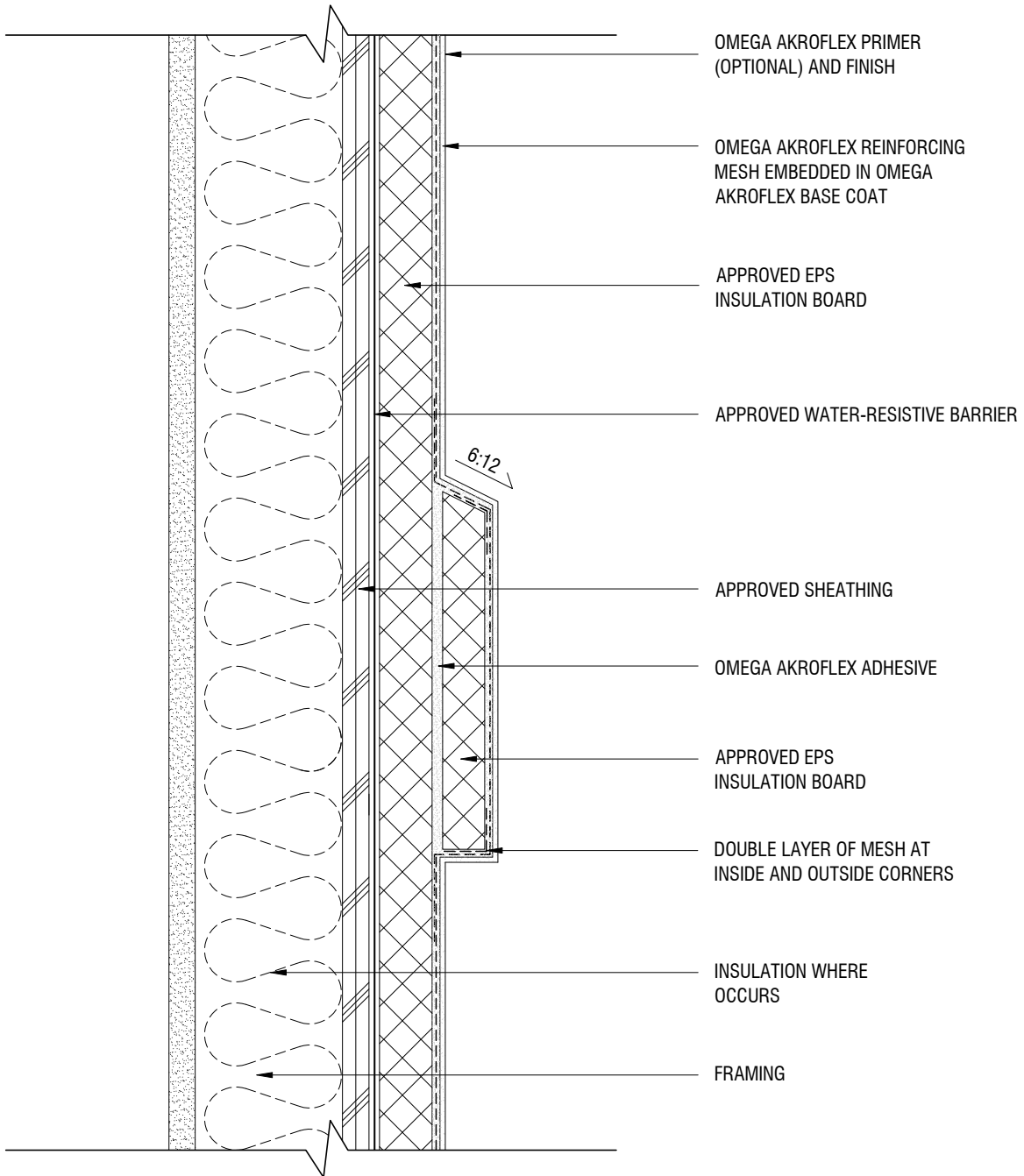
AKROFLEX WM EIFS DETAIL

TYPICAL OR HEAVY DUTY CORNER DETAILS

SCALE: 3"=1'-0"

DRAWING NO.: AWM 05.00

DRAWN: JUNE 2009



- OMEGA AKROFLEX PRIMER (OPTIONAL) AND FINISH
- OMEGA AKROFLEX REINFORCING MESH EMBEDDED IN OMEGA AKROFLEX BASE COAT
- APPROVED EPS INSULATION BOARD
- APPROVED WATER-RESISTIVE BARRIER
- APPROVED SHEATHING
- OMEGA AKROFLEX ADHESIVE
- APPROVED EPS INSULATION BOARD
- DOUBLE LAYER OF MESH AT INSIDE AND OUTSIDE CORNERS
- INSULATION WHERE OCCURS
- FRAMING

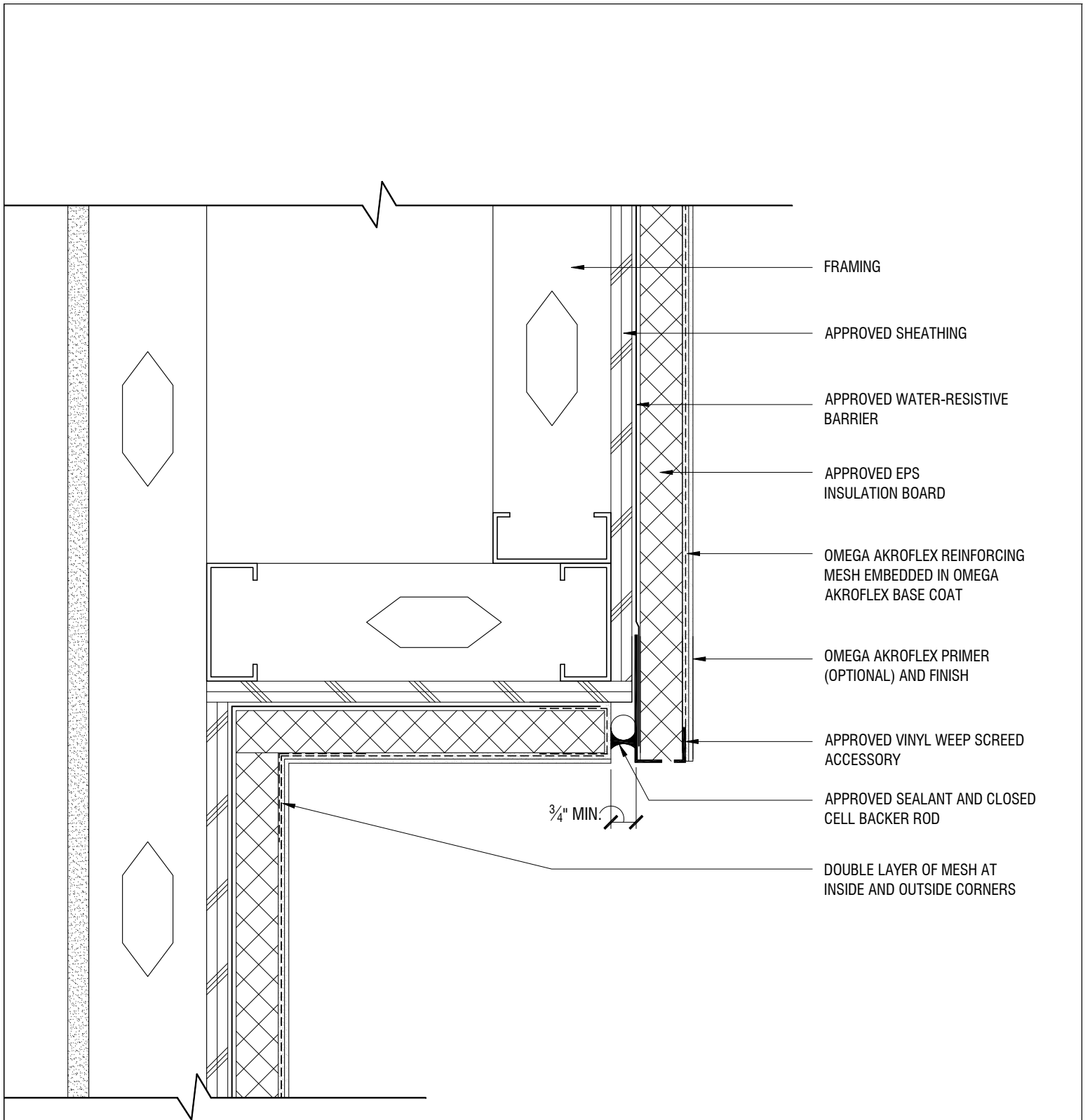
THE ARCHITECTURE, ENGINEERING, AND DESIGN OF THE PROJECT USING OMEGA PRODUCTS IS THE RESPONSIBILITY OF THE PROJECT'S DESIGN PROFESSIONAL. ALL SYSTEMS MUST COMPLY WITH LOCAL BUILDING CODES AND STANDARDS. THIS DETAIL IS FOR GENERAL INFORMATION AND GUIDANCE ONLY, AND OMEGA INC. SPECIFICALLY DISCLAIMS ANY LIABILITY FOR THE USE OF THIS DETAIL AND FOR THE ARCHITECTURE, DESIGN, ENGINEERING, OR WORKMANSHIP OF ANY PROJECT. THE PROJECT DESIGN PROFESSIONAL DETERMINES, IN ITS SOLE DISCRETION, WHETHER THIS DETAIL OR A FUNCTIONALLY EQUIVALENT ALTERNATIVE IS BEST SUITED FOR THE THE PROJECT. USE OF A FUNCTIONALLY EQUIVALENT DETAIL DOES NOT VIOLATE OMEGA'S WARRANTY. THIS DETAIL IS SUBJECT TO CHANGE WITHOUT NOTICE. CONTACT OMEGA TO INSURE YOU HAVE THE MOST RECENT VERSION.



CORPORATE OFFICE
 1681 CALIFORNIA AVE., CORONA, CA 92881
 E-MAIL: INFO@OMEGA-PRODUCTS.COM
 WEBSITE: WWW.OMEGA-PRODUCTS.COM

AKROFLEX WM EIFS DETAIL

TYPICAL AESTHETIC PLANT-ON



- FRAMING
- APPROVED SHEATHING
- APPROVED WATER-RESISTIVE BARRIER
- APPROVED EPS INSULATION BOARD
- OMEGA AKROFLEX REINFORCING MESH EMBEDDED IN OMEGA AKROFLEX BASE COAT
- OMEGA AKROFLEX PRIMER (OPTIONAL) AND FINISH
- APPROVED VINYL WEEP SCREED ACCESSORY
- APPROVED SEALANT AND CLOSED CELL BACKER ROD
- DOUBLE LAYER OF MESH AT INSIDE AND OUTSIDE CORNERS

3/4" MIN.

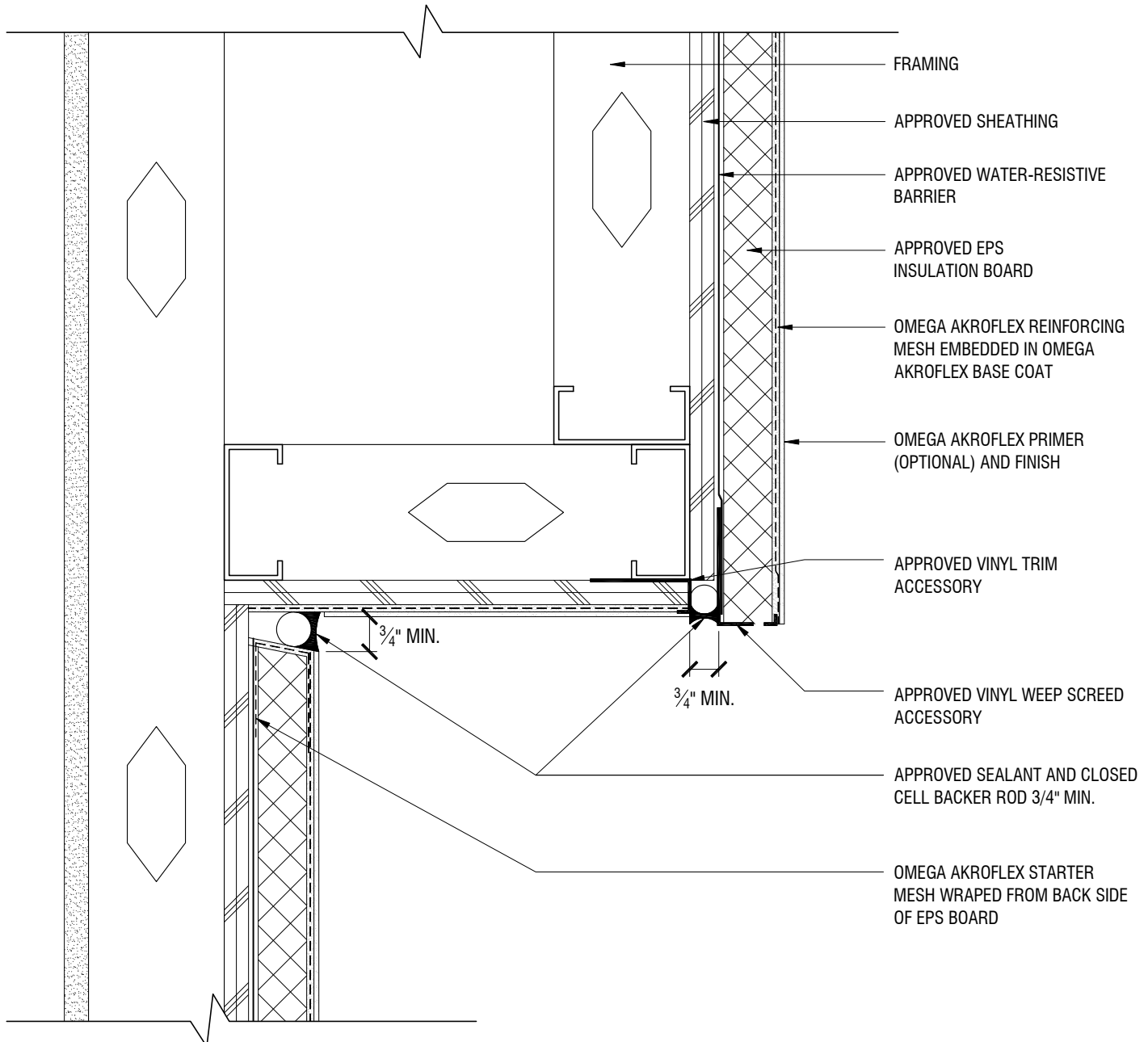
THE ARCHITECTURE, ENGINEERING, AND DESIGN OF THE PROJECT USING OMEGA PRODUCTS IS THE RESPONSIBILITY OF THE PROJECT'S DESIGN PROFESSIONAL. ALL SYSTEMS MUST COMPLY WITH LOCAL BUILDING CODES AND STANDARDS. THIS DETAIL IS FOR GENERAL INFORMATION AND GUIDANCE ONLY, AND OMEGA INC. SPECIFICALLY DISCLAIMS ANY LIABILITY FOR THE USE OF THIS DETAIL AND FOR THE ARCHITECTURE, DESIGN, ENGINEERING, OR WORKMANSHIP OF ANY PROJECT. THE PROJECT DESIGN PROFESSIONAL DETERMINES, IN ITS SOLE DISCRETION, WHETHER THIS DETAIL OR A FUNCTIONALLY EQUIVALENT ALTERNATIVE IS BEST SUITED FOR THE THE PROJECT. USE OF A FUNCTIONALLY EQUIVALENT DETAIL DOES NOT VIOLATE OMEGA'S WARRANTY. THIS DETAIL IS SUBJECT TO CHANGE WITHOUT NOTICE. CONTACT OMEGA TO INSURE YOU HAVE THE MOST RECENT VERSION.



CORPORATE OFFICE
 1681 CALIFORNIA AVE., CORONA, CA 92881
 E-MAIL: INFO@OMEGA-PRODUCTS.COM
 WEBSITE: WWW.OMEGA-PRODUCTS.COM

AKROFLEX WM EIFS DETAIL

TYPICAL SOFFIT DETAIL



- FRAMING
- APPROVED SHEATHING
- APPROVED WATER-RESISTIVE BARRIER
- APPROVED EPS INSULATION BOARD
- OMEGA AKROFLEX REINFORCING MESH EMBEDDED IN OMEGA AKROFLEX BASE COAT
- OMEGA AKROFLEX PRIMER (OPTIONAL) AND FINISH
- APPROVED VINYL TRIM ACCESSORY
- APPROVED VINYL WEEP SCREEN ACCESSORY
- APPROVED SEALANT AND CLOSED CELL BACKER ROD 3/4" MIN.
- OMEGA AKROFLEX STARTER MESH WRAPPED FROM BACK SIDE OF EPS BOARD

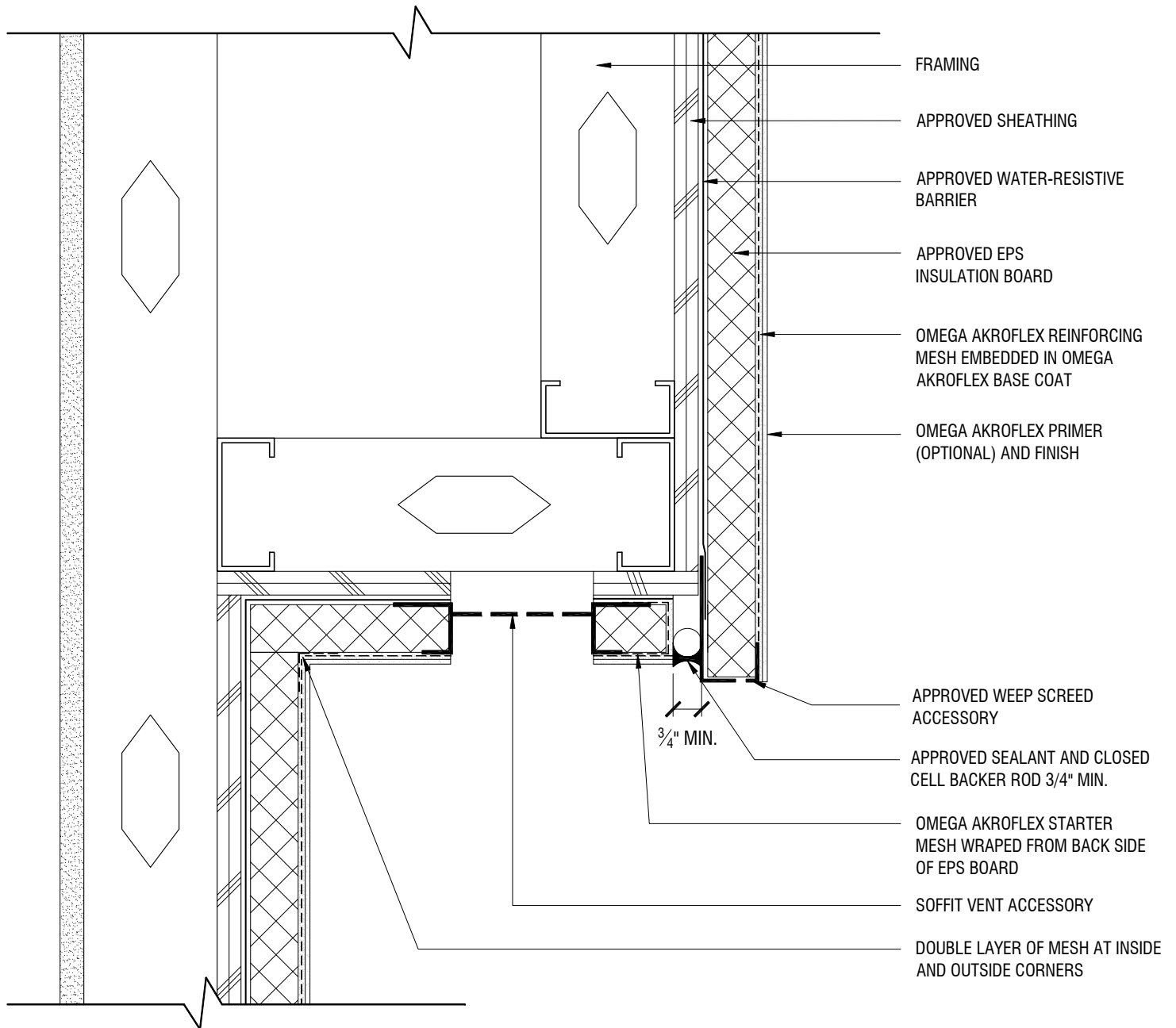
THE ARCHITECTURE, ENGINEERING, AND DESIGN OF THE PROJECT USING OMEGA PRODUCTS IS THE RESPONSIBILITY OF THE PROJECT'S DESIGN PROFESSIONAL. ALL SYSTEMS MUST COMPLY WITH LOCAL BUILDING CODES AND STANDARDS. THIS DETAIL IS FOR GENERAL INFORMATION AND GUIDANCE ONLY, AND OMEGA INC. SPECIFICALLY DISCLAIMS ANY LIABILITY FOR THE USE OF THIS DETAIL AND FOR THE ARCHITECTURE, DESIGN, ENGINEERING, OR WORKMANSHIP OF ANY PROJECT. THE PROJECT DESIGN PROFESSIONAL DETERMINES, IN ITS SOLE DISCRETION, WHETHER THIS DETAIL OR A FUNCTIONALLY EQUIVALENT ALTERNATIVE IS BEST SUITED FOR THE THE PROJECT. USE OF A FUNCTIONALLY EQUIVALENT DETAIL DOES NOT VIOLATE OMEGA'S WARRANTY. THIS DETAIL IS SUBJECT TO CHANGE WITHOUT NOTICE. CONTACT OMEGA TO INSURE YOU HAVE THE MOST RECENT VERSION.



CORPORATE OFFICE
 1681 CALIFORNIA AVE., CORONA, CA 92881
 E-MAIL: INFO@OMEGA-PRODUCTS.COM
 WEBSITE: WWW.OMEGA-PRODUCTS.COM

AKROFLEX WM EIFS DETAIL

TYPICAL DIRECT APPLIED SOFFIT DETAIL



THE ARCHITECTURE, ENGINEERING, AND DESIGN OF THE PROJECT USING OMEGA PRODUCTS IS THE RESPONSIBILITY OF THE PROJECT'S DESIGN PROFESSIONAL. ALL SYSTEMS MUST COMPLY WITH LOCAL BUILDING CODES AND STANDARDS. THIS DETAIL IS FOR GENERAL INFORMATION AND GUIDANCE ONLY, AND OMEGA INC. SPECIFICALLY DISCLAIMS ANY LIABILITY FOR THE USE OF THIS DETAIL AND FOR THE ARCHITECTURE, DESIGN, ENGINEERING, OR WORKMANSHIP OF ANY PROJECT. THE PROJECT DESIGN PROFESSIONAL DETERMINES, IN ITS SOLE DISCRETION, WHETHER THIS DETAIL OR A FUNCTIONALLY EQUIVALENT ALTERNATIVE IS BEST SUITED FOR THE THE PROJECT. USE OF A FUNCTIONALLY EQUIVALENT DETAIL DOES NOT VIOLATE OMEGA'S WARRANTY. THIS DETAIL IS SUBJECT TO CHANGE WITHOUT NOTICE. CONTACT OMEGA TO INSURE YOU HAVE THE MOST RECENT VERSION.



CORPORATE OFFICE
 1681 CALIFORNIA AVE., CORONA, CA 92881
 E-MAIL: INFO@OMEGA-PRODUCTS.COM
 WEBSITE: WWW.OMEGA-PRODUCTS.COM

AKROFLEX WM EIFS DETAIL

TYPICAL SOFFIT VENT DETAIL

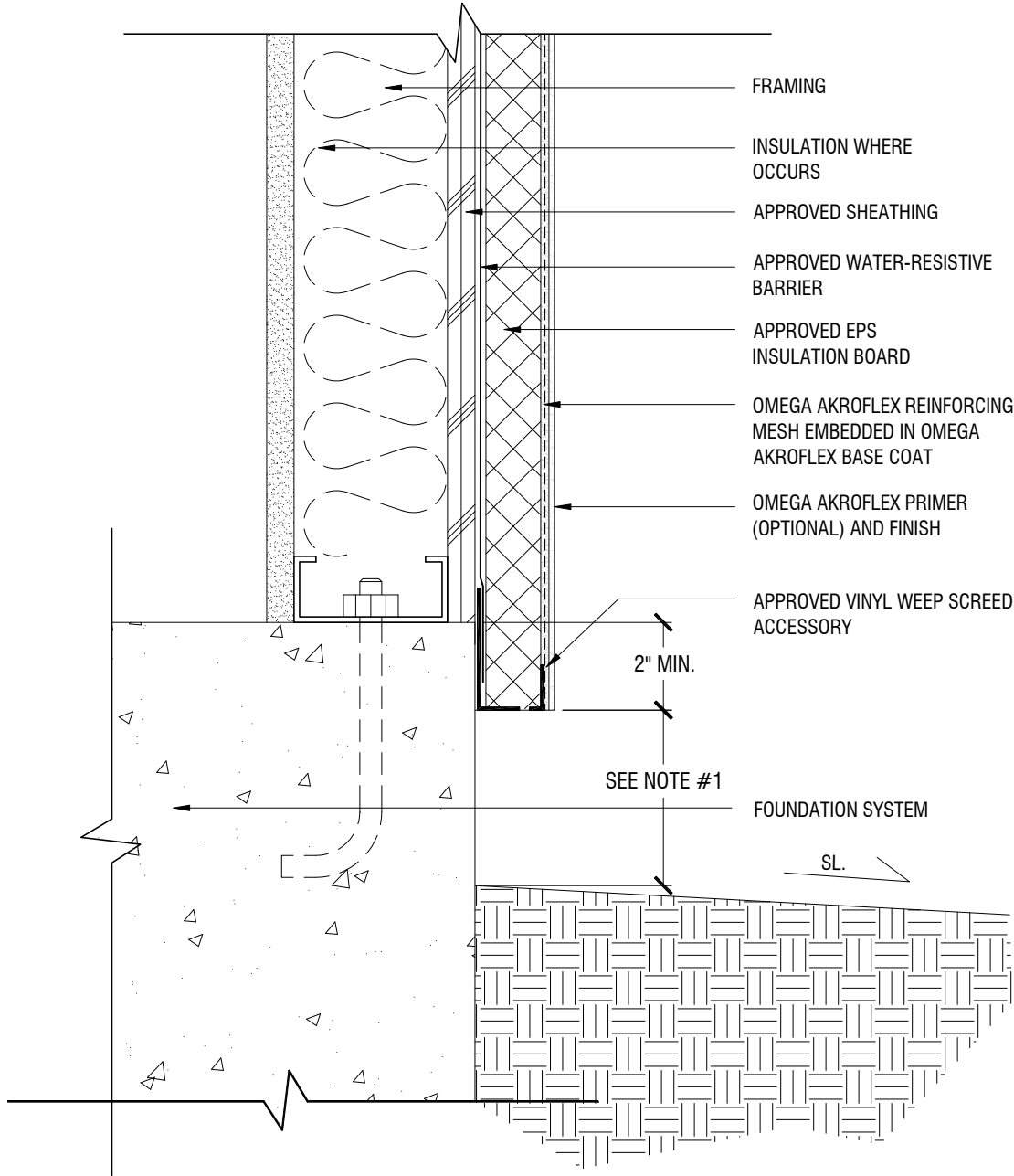
SCALE: 3"=1'-0"

DRAWING NO.: AWM 09.00

DRAWN: JUNE 2009

NOTES

1. 8" MIN. ABOVE GRADE, 6" MIN. ABOVE PAVED SURFACES/HARDSCAPE, OR AS SPECIFIED BY LOCAL CODE



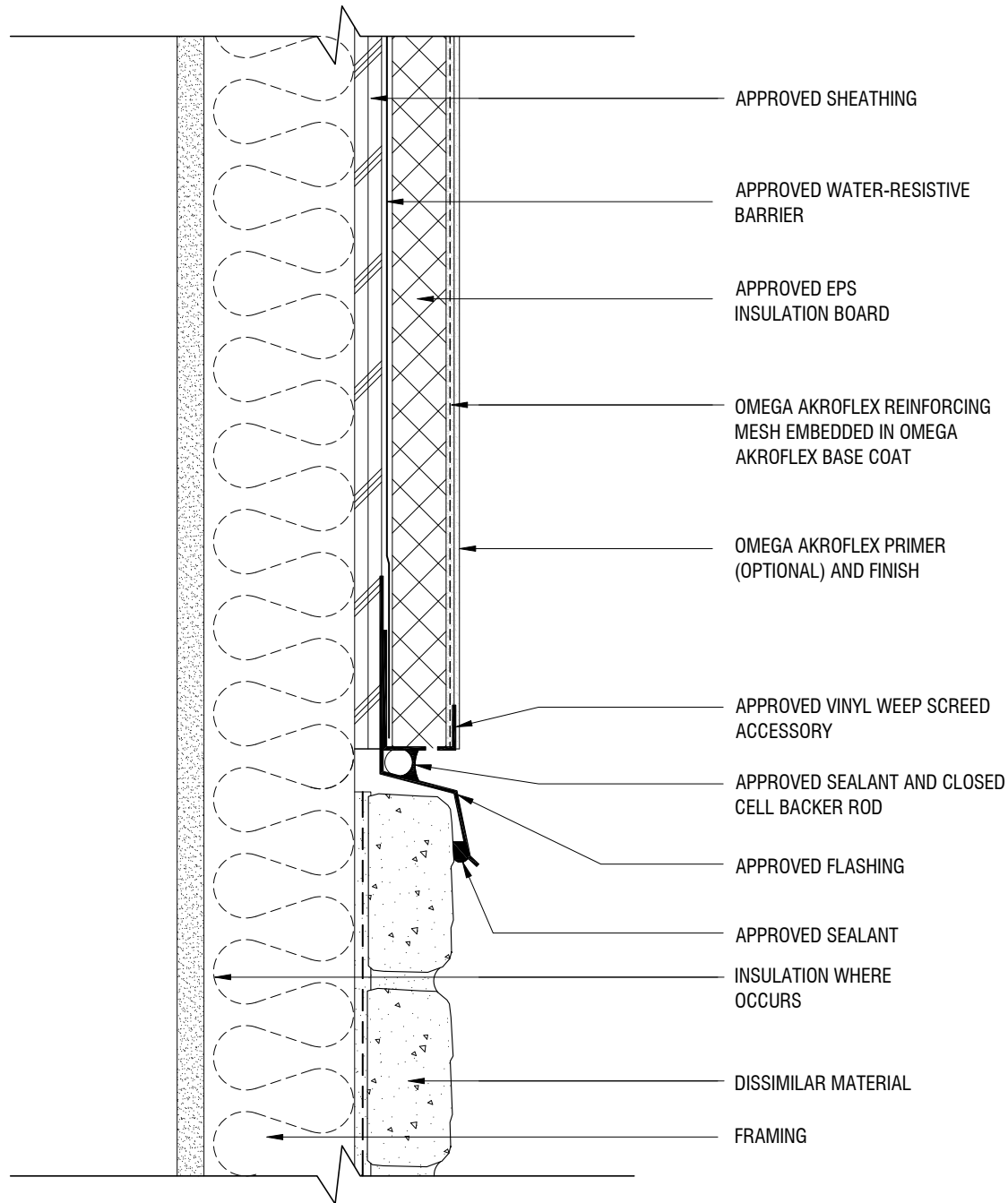
THE ARCHITECTURE, ENGINEERING, AND DESIGN OF THE PROJECT USING OMEGA PRODUCTS IS THE RESPONSIBILITY OF THE PROJECT'S DESIGN PROFESSIONAL. ALL SYSTEMS MUST COMPLY WITH LOCAL BUILDING CODES AND STANDARDS. THIS DETAIL IS FOR GENERAL INFORMATION AND GUIDANCE ONLY, AND OMEGA INC. SPECIFICALLY DISCLAIMS ANY LIABILITY FOR THE USE OF THIS DETAIL AND FOR THE ARCHITECTURE, DESIGN, ENGINEERING, OR WORKMANSHIP OF ANY PROJECT. THE PROJECT DESIGN PROFESSIONAL DETERMINES, IN ITS SOLE DISCRETION, WHETHER THIS DETAIL OR A FUNCTIONALLY EQUIVALENT ALTERNATIVE IS BEST SUITED FOR THE THE PROJECT. USE OF A FUNCTIONALLY EQUIVALENT DETAIL DOES NOT VIOLATE OMEGA'S WARRANTY. THIS DETAIL IS SUBJECT TO CHANGE WITHOUT NOTICE. CONTACT OMEGA TO INSURE YOU HAVE THE MOST RECENT VERSION.



CORPORATE OFFICE
 1681 CALIFORNIA AVE., CORONA, CA 92881
 E-MAIL: INFO@OMEGA-PRODUCTS.COM
 WEBSITE: WWW.OMEGA-PRODUCTS.COM

AKROFLEX WM EIFS DETAIL

**TYPICAL TERMINATION
 AT FOUNDATION**



APPROVED SHEATHING

APPROVED WATER-RESISTIVE BARRIER

APPROVED EPS INSULATION BOARD

OMEGA AKROFLEX REINFORCING MESH EMBEDDED IN OMEGA AKROFLEX BASE COAT

OMEGA AKROFLEX PRIMER (OPTIONAL) AND FINISH

APPROVED VINYL WEEP SCREED ACCESSORY

APPROVED SEALANT AND CLOSED CELL BACKER ROD

APPROVED FLASHING

APPROVED SEALANT

INSULATION WHERE OCCURS

DISSIMILAR MATERIAL

FRAMING

THE ARCHITECTURE, ENGINEERING, AND DESIGN OF THE PROJECT USING OMEGA PRODUCTS IS THE RESPONSIBILITY OF THE PROJECT'S DESIGN PROFESSIONAL. ALL SYSTEMS MUST COMPLY WITH LOCAL BUILDING CODES AND STANDARDS. THIS DETAIL IS FOR GENERAL INFORMATION AND GUIDANCE ONLY, AND OMEGA INC. SPECIFICALLY DISCLAIMS ANY LIABILITY FOR THE USE OF THIS DETAIL AND FOR THE ARCHITECTURE, DESIGN, ENGINEERING, OR WORKMANSHIP OF ANY PROJECT. THE PROJECT DESIGN PROFESSIONAL DETERMINES, IN ITS SOLE DISCRETION, WHETHER THIS DETAIL OR A FUNCTIONALLY EQUIVALENT ALTERNATIVE IS BEST SUITED FOR THE THE PROJECT. USE OF A FUNCTIONALLY EQUIVALENT DETAIL DOES NOT VIOLATE OMEGA'S WARRANTY. THIS DETAIL IS SUBJECT TO CHANGE WITHOUT NOTICE. CONTACT OMEGA TO INSURE YOU HAVE THE MOST RECENT VERSION.



CORPORATE OFFICE
 1681 CALIFORNIA AVE., CORONA, CA 92881
 E-MAIL: INFO@OMEGA-PRODUCTS.COM
 WEBSITE: WWW.OMEGA-PRODUCTS.COM

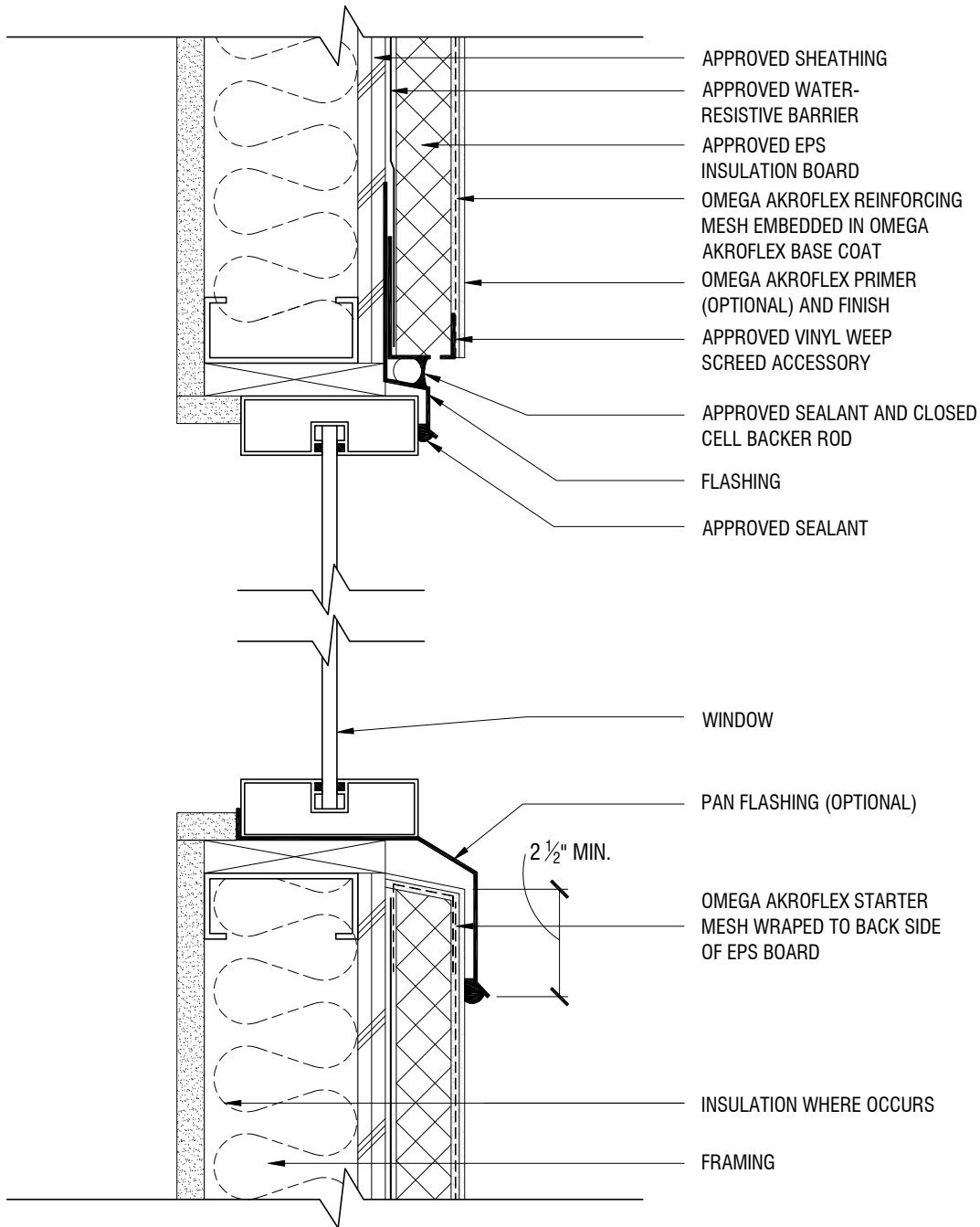
AKROFLEX WM EIFS DETAIL

TYPICAL TERMINATION AT DISSIMILAR MATERIALS

SCALE: 3"=1'-0"

DRAWING NO.: AWM 11.00

DRAWN: JUNE 2009



- APPROVED SHEATHING
- APPROVED WATER-RESISTIVE BARRIER
- APPROVED EPS INSULATION BOARD
- OMEGA AKROFLEX REINFORCING MESH EMBEDDED IN OMEGA AKROFLEX BASE COAT
- OMEGA AKROFLEX PRIMER (OPTIONAL) AND FINISH
- APPROVED VINYL WEEP SCREED ACCESSORY
- APPROVED SEALANT AND CLOSED CELL BACKER ROD
- FLASHING
- APPROVED SEALANT
- WINDOW
- PAN FLASHING (OPTIONAL)
- 2 1/2" MIN.
- OMEGA AKROFLEX STARTER MESH WRAPED TO BACK SIDE OF EPS BOARD
- INSULATION WHERE OCCURS
- FRAMING

THE ARCHITECTURE, ENGINEERING, AND DESIGN OF THE PROJECT USING OMEGA PRODUCTS IS THE RESPONSIBILITY OF THE PROJECT'S DESIGN PROFESSIONAL. ALL SYSTEMS MUST COMPLY WITH LOCAL BUILDING CODES AND STANDARDS. THIS DETAIL IS FOR GENERAL INFORMATION AND GUIDANCE ONLY, AND OMEGA INC. SPECIFICALLY DISCLAIMS ANY LIABILITY FOR THE USE OF THIS DETAIL AND FOR THE ARCHITECTURE, DESIGN, ENGINEERING, OR WORKMANSHIP OF ANY PROJECT. THE PROJECT DESIGN PROFESSIONAL DETERMINES, IN ITS SOLE DISCRETION, WHETHER THIS DETAIL OR A FUNCTIONALLY EQUIVALENT ALTERNATIVE IS BEST SUITED FOR THE THE PROJECT. USE OF A FUNCTIONALLY EQUIVALENT DETAIL DOES NOT VIOLATE OMEGA'S WARRANTY. THIS DETAIL IS SUBJECT TO CHANGE WITHOUT NOTICE. CONTACT OMEGA TO INSURE YOU HAVE THE MOST RECENT VERSION.



CORPORATE OFFICE
 1681 CALIFORNIA AVE., CORONA, CA 92881
 E-MAIL: INFO@OMEGA-PRODUCTS.COM
 WEBSITE: WWW.OMEGA-PRODUCTS.COM

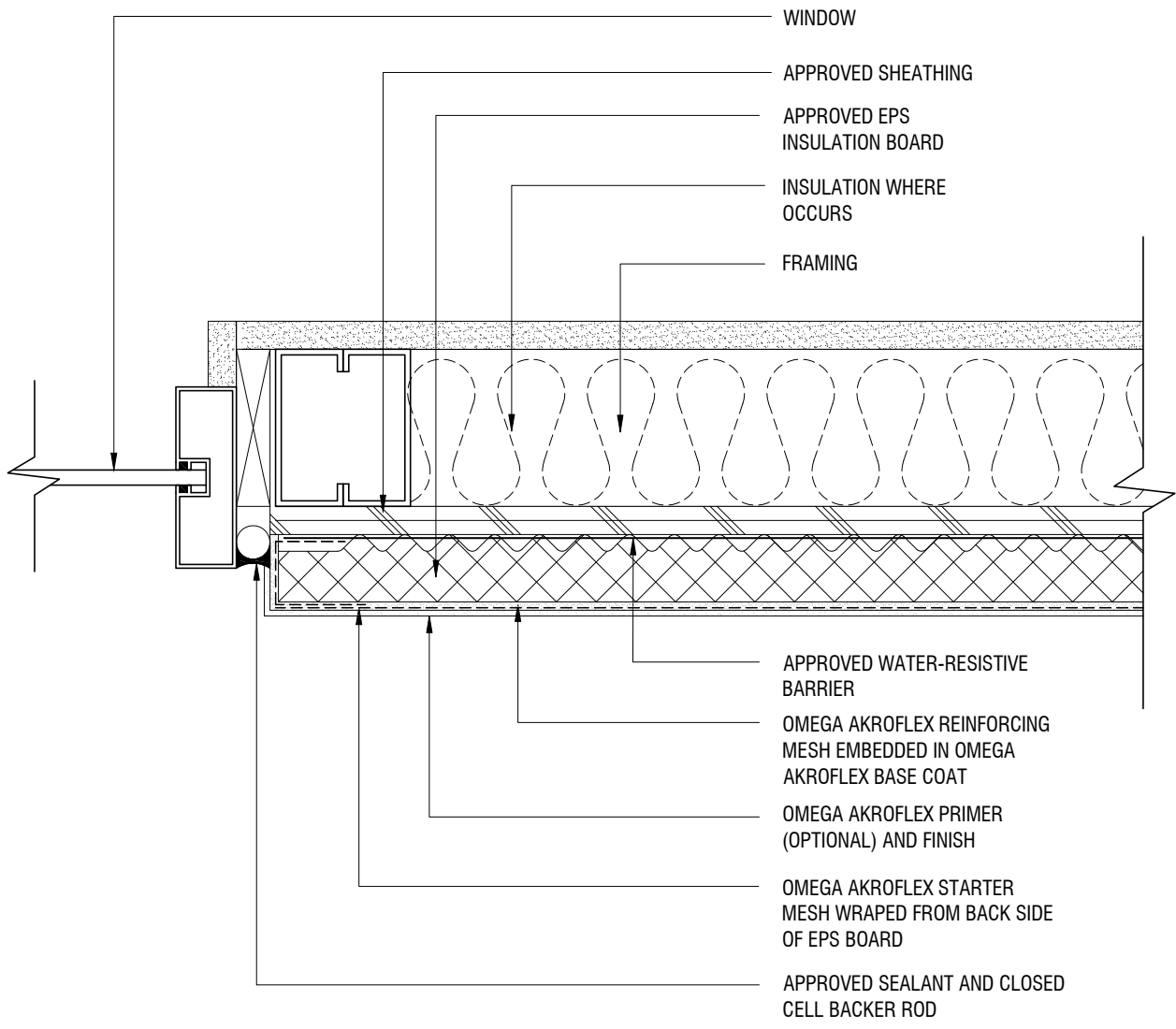
AKROFLEX WM EIFS DETAIL

TYPICAL TERMINATION AT WINDOW HEAD AND SILL

SCALE: 3"=1'-0"

DRAWING NO.: AWM 12.00

DRAWN: JUNE 2009



- WINDOW
- APPROVED SHEATHING
- APPROVED EPS INSULATION BOARD
- INSULATION WHERE OCCURS
- FRAMING
- APPROVED WATER-RESISTIVE BARRIER
- OMEGA AKROFLEX REINFORCING MESH EMBEDDED IN OMEGA AKROFLEX BASE COAT
- OMEGA AKROFLEX PRIMER (OPTIONAL) AND FINISH
- OMEGA AKROFLEX STARTER MESH WRAPPED FROM BACK SIDE OF EPS BOARD
- APPROVED SEALANT AND CLOSED CELL BACKER ROD

THE ARCHITECTURE, ENGINEERING, AND DESIGN OF THE PROJECT USING OMEGA PRODUCTS IS THE RESPONSIBILITY OF THE PROJECT'S DESIGN PROFESSIONAL. ALL SYSTEMS MUST COMPLY WITH LOCAL BUILDING CODES AND STANDARDS. THIS DETAIL IS FOR GENERAL INFORMATION AND GUIDANCE ONLY, AND OMEGA INC. SPECIFICALLY DISCLAIMS ANY LIABILITY FOR THE USE OF THIS DETAIL AND FOR THE ARCHITECTURE, DESIGN, ENGINEERING, OR WORKMANSHIP OF ANY PROJECT. THE PROJECT DESIGN PROFESSIONAL DETERMINES, IN ITS SOLE DISCRETION, WHETHER THIS DETAIL OR A FUNCTIONALLY EQUIVALENT ALTERNATIVE IS BEST SUITED FOR THE THE PROJECT. USE OF A FUNCTIONALLY EQUIVALENT DETAIL DOES NOT VIOLATE OMEGA'S WARRANTY. THIS DETAIL IS SUBJECT TO CHANGE WITHOUT NOTICE. CONTACT OMEGA TO INSURE YOU HAVE THE MOST RECENT VERSION.

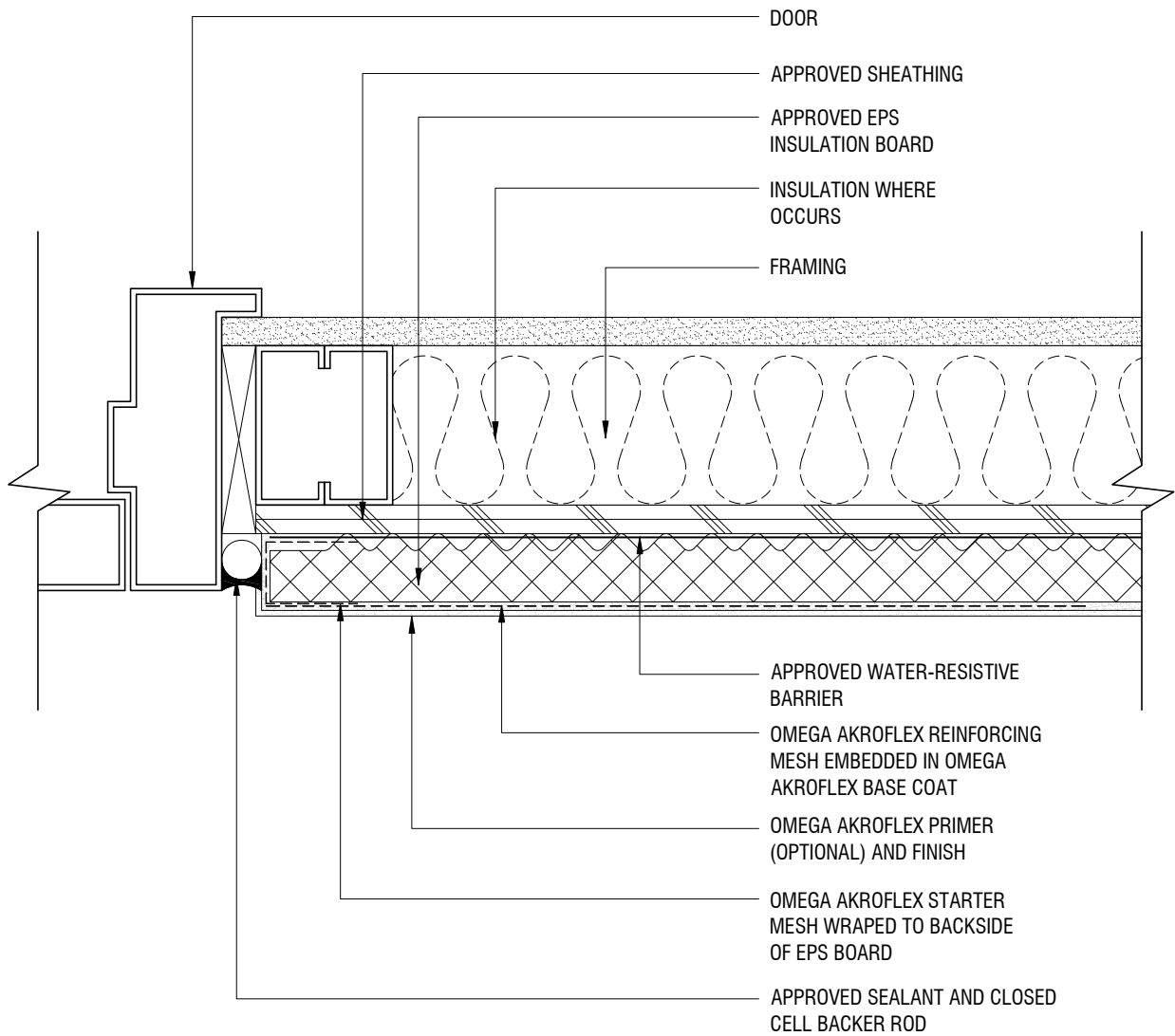


CORPORATE OFFICE
 1681 CALIFORNIA AVE., CORONA, CA 92881
 E-MAIL: INFO@OMEGA-PRODUCTS.COM
 WEBSITE: WWW.OMEGA-PRODUCTS.COM

AKROFLEX WM EIFS DETAIL

TYPICAL TERMINATION AT WINDOW JAMB

SCALE: 3"=1'-0" | DRAWING NO.: AWM 13.00 | DRAWN: JUNE 2009



THE ARCHITECTURE, ENGINEERING, AND DESIGN OF THE PROJECT USING OMEGA PRODUCTS IS THE RESPONSIBILITY OF THE PROJECT'S DESIGN PROFESSIONAL. ALL SYSTEMS MUST COMPLY WITH LOCAL BUILDING CODES AND STANDARDS. THIS DETAIL IS FOR GENERAL INFORMATION AND GUIDANCE ONLY, AND OMEGA INC. SPECIFICALLY DISCLAIMS ANY LIABILITY FOR THE USE OF THIS DETAIL AND FOR THE ARCHITECTURE, DESIGN, ENGINEERING, OR WORKMANSHIP OF ANY PROJECT. THE PROJECT DESIGN PROFESSIONAL DETERMINES, IN ITS SOLE DISCRETION, WHETHER THIS DETAIL OR A FUNCTIONALLY EQUIVALENT ALTERNATIVE IS BEST SUITED FOR THE THE PROJECT. USE OF A FUNCTIONALLY EQUIVALENT DETAIL DOES NOT VIOLATE OMEGA'S WARRANTY. THIS DETAIL IS SUBJECT TO CHANGE WITHOUT NOTICE. CONTACT OMEGA TO INSURE YOU HAVE THE MOST RECENT VERSION.



CORPORATE OFFICE
 1681 CALIFORNIA AVE., CORONA, CA 92881
 E-MAIL: INFO@OMEGA-PRODUCTS.COM
 WEBSITE: WWW.OMEGA-PRODUCTS.COM

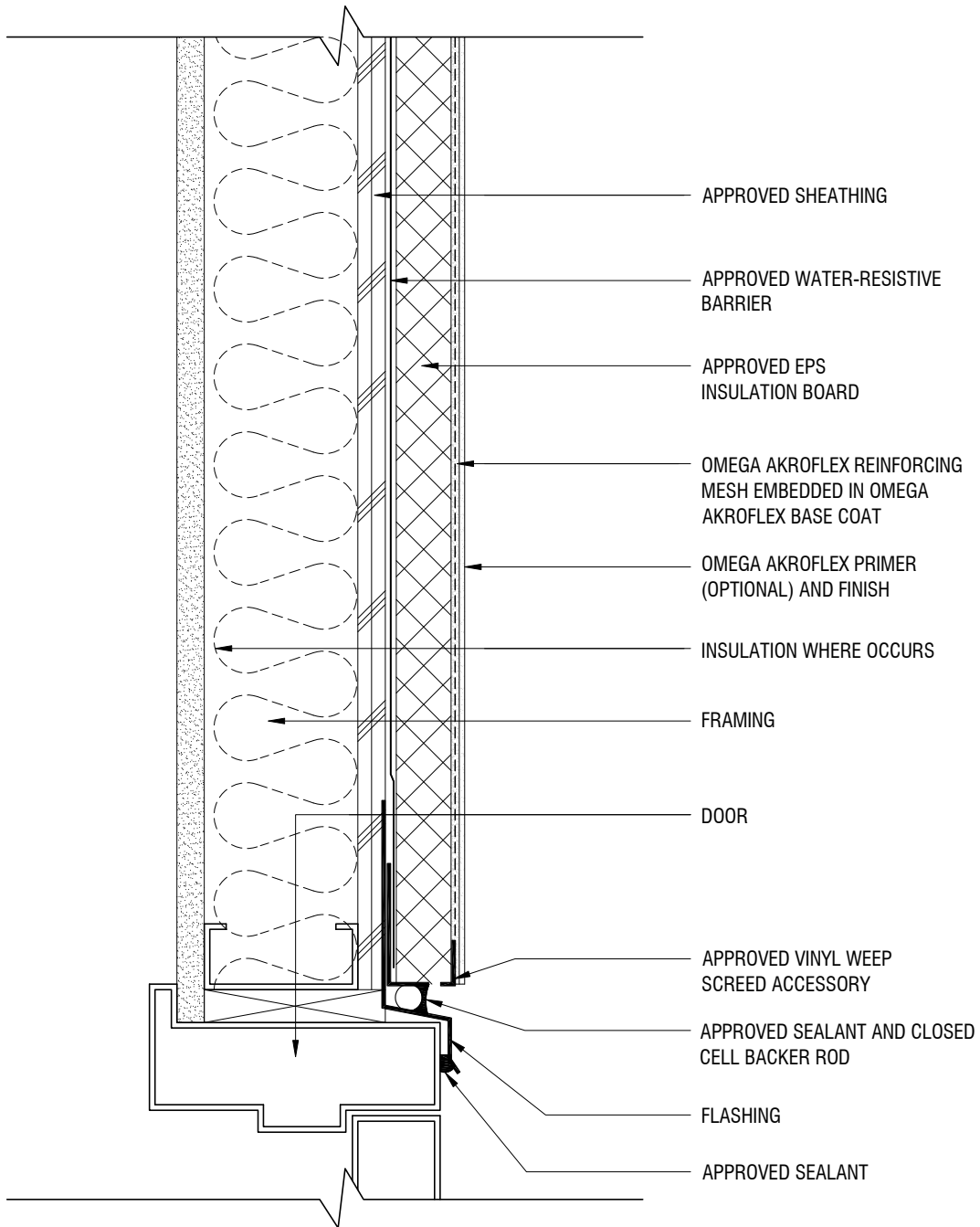
AKROFLEX WM EIFS DETAIL

TYPICAL TERMINATION AT DOOR JAMB

SCALE: 3"=1'-0"

DRAWING NO.: AWM 14.00

DRAWN: JUNE 2009



APPROVED SHEATHING

APPROVED WATER-RESISTIVE BARRIER

APPROVED EPS INSULATION BOARD

OMEGA AKROFLEX REINFORCING MESH EMBEDDED IN OMEGA AKROFLEX BASE COAT

OMEGA AKROFLEX PRIMER (OPTIONAL) AND FINISH

INSULATION WHERE OCCURS

FRAMING

DOOR

APPROVED VINYL WEEP SCREED ACCESSORY

APPROVED SEALANT AND CLOSED CELL BACKER ROD

FLASHING

APPROVED SEALANT

THE ARCHITECTURE, ENGINEERING, AND DESIGN OF THE PROJECT USING OMEGA PRODUCTS IS THE RESPONSIBILITY OF THE PROJECT'S DESIGN PROFESSIONAL. ALL SYSTEMS MUST COMPLY WITH LOCAL BUILDING CODES AND STANDARDS. THIS DETAIL IS FOR GENERAL INFORMATION AND GUIDANCE ONLY, AND OMEGA INC. SPECIFICALLY DISCLAIMS ANY LIABILITY FOR THE USE OF THIS DETAIL AND FOR THE ARCHITECTURE, DESIGN, ENGINEERING, OR WORKMANSHIP OF ANY PROJECT. THE PROJECT DESIGN PROFESSIONAL DETERMINES, IN ITS SOLE DISCRETION, WHETHER THIS DETAIL OR A FUNCTIONALLY EQUIVALENT ALTERNATIVE IS BEST SUITED FOR THE THE PROJECT. USE OF A FUNCTIONALLY EQUIVALENT DETAIL DOES NOT VIOLATE OMEGA'S WARRANTY. THIS DETAIL IS SUBJECT TO CHANGE WITHOUT NOTICE. CONTACT OMEGA TO INSURE YOU HAVE THE MOST RECENT VERSION.



CORPORATE OFFICE
 1681 CALIFORNIA AVE., CORONA, CA 92881
 E-MAIL: INFO@OMEGA-PRODUCTS.COM
 WEBSITE: WWW.OMEGA-PRODUCTS.COM

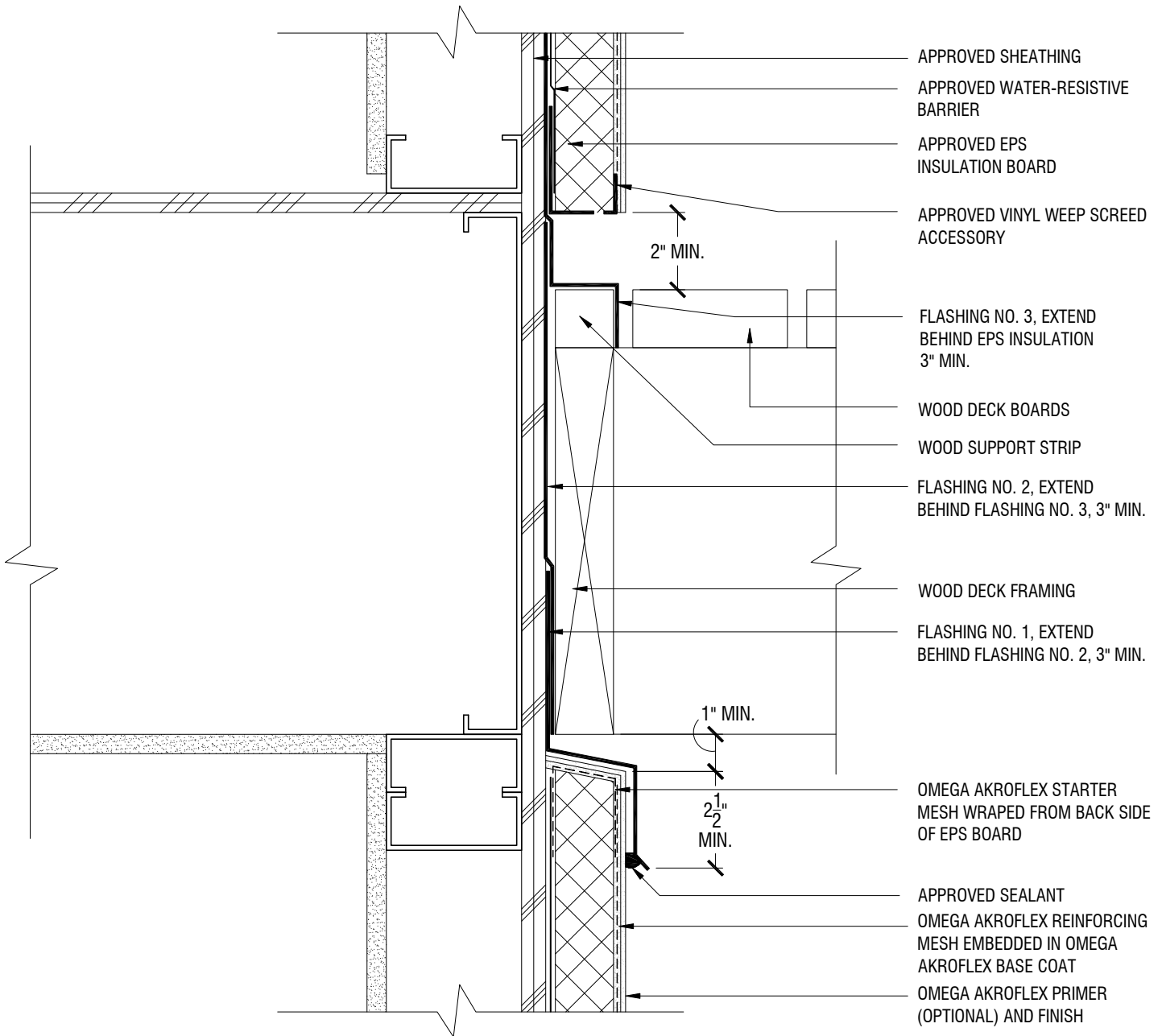
AKROFLEX WM EIFS DETAIL

TYPICAL TERMINATION AT DOOR HEAD

SCALE: 3"=1'-0"

DRAWING NO.: AWM 15.00

DRAWN: JUNE 2009



THE ARCHITECTURE, ENGINEERING, AND DESIGN OF THE PROJECT USING OMEGA PRODUCTS IS THE RESPONSIBILITY OF THE PROJECT'S DESIGN PROFESSIONAL. ALL SYSTEMS MUST COMPLY WITH LOCAL BUILDING CODES AND STANDARDS. THIS DETAIL IS FOR GENERAL INFORMATION AND GUIDANCE ONLY, AND OMEGA INC. SPECIFICALLY DISCLAIMS ANY LIABILITY FOR THE USE OF THIS DETAIL AND FOR THE ARCHITECTURE, DESIGN, ENGINEERING, OR WORKMANSHIP OF ANY PROJECT. THE PROJECT DESIGN PROFESSIONAL DETERMINES, IN ITS SOLE DISCRETION, WHETHER THIS DETAIL OR A FUNCTIONALLY EQUIVALENT ALTERNATIVE IS BEST SUITED FOR THE THE PROJECT. USE OF A FUNCTIONALLY EQUIVALENT DETAIL DOES NOT VIOLATE OMEGA'S WARRANTY. THIS DETAIL IS SUBJECT TO CHANGE WITHOUT NOTICE. CONTACT OMEGA TO INSURE YOU HAVE THE MOST RECENT VERSION.



CORPORATE OFFICE
 1681 CALIFORNIA AVE., CORONA, CA 92881
 E-MAIL: INFO@OMEGA-PRODUCTS.COM
 WEBSITE: WWW.OMEGA-PRODUCTS.COM

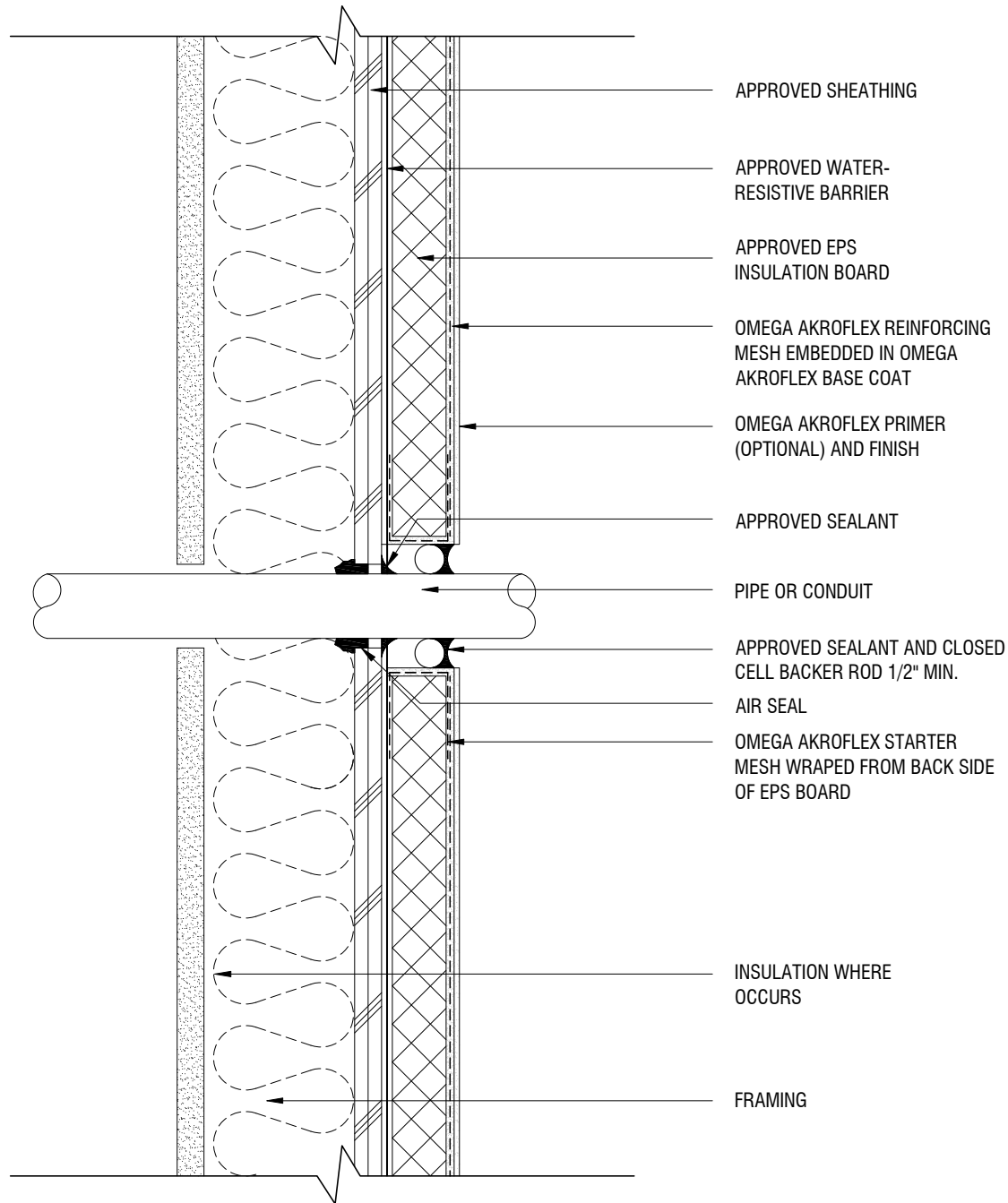
AKROFLEX WM EIFS DETAIL

TYPICAL TERMINATION AT DECK

SCALE: 3"=1'-0"

DRAWING NO.: AWM 16.00

DRAWN: JUNE 2009



THE ARCHITECTURE, ENGINEERING, AND DESIGN OF THE PROJECT USING OMEGA PRODUCTS IS THE RESPONSIBILITY OF THE PROJECT'S DESIGN PROFESSIONAL. ALL SYSTEMS MUST COMPLY WITH LOCAL BUILDING CODES AND STANDARDS. THIS DETAIL IS FOR GENERAL INFORMATION AND GUIDANCE ONLY, AND OMEGA INC. SPECIFICALLY DISCLAIMS ANY LIABILITY FOR THE USE OF THIS DETAIL AND FOR THE ARCHITECTURE, DESIGN, ENGINEERING, OR WORKMANSHIP OF ANY PROJECT. THE PROJECT DESIGN PROFESSIONAL DETERMINES, IN ITS SOLE DISCRETION, WHETHER THIS DETAIL OR A FUNCTIONALLY EQUIVALENT ALTERNATIVE IS BEST SUITED FOR THE THE PROJECT. USE OF A FUNCTIONALLY EQUIVALENT DETAIL DOES NOT VIOLATE OMEGA'S WARRANTY. THIS DETAIL IS SUBJECT TO CHANGE WITHOUT NOTICE. CONTACT OMEGA TO INSURE YOU HAVE THE MOST RECENT VERSION.



CORPORATE OFFICE
 1681 CALIFORNIA AVE., CORONA, CA 92881
 E-MAIL: INFO@OMEGA-PRODUCTS.COM
 WEBSITE: WWW.OMEGA-PRODUCTS.COM

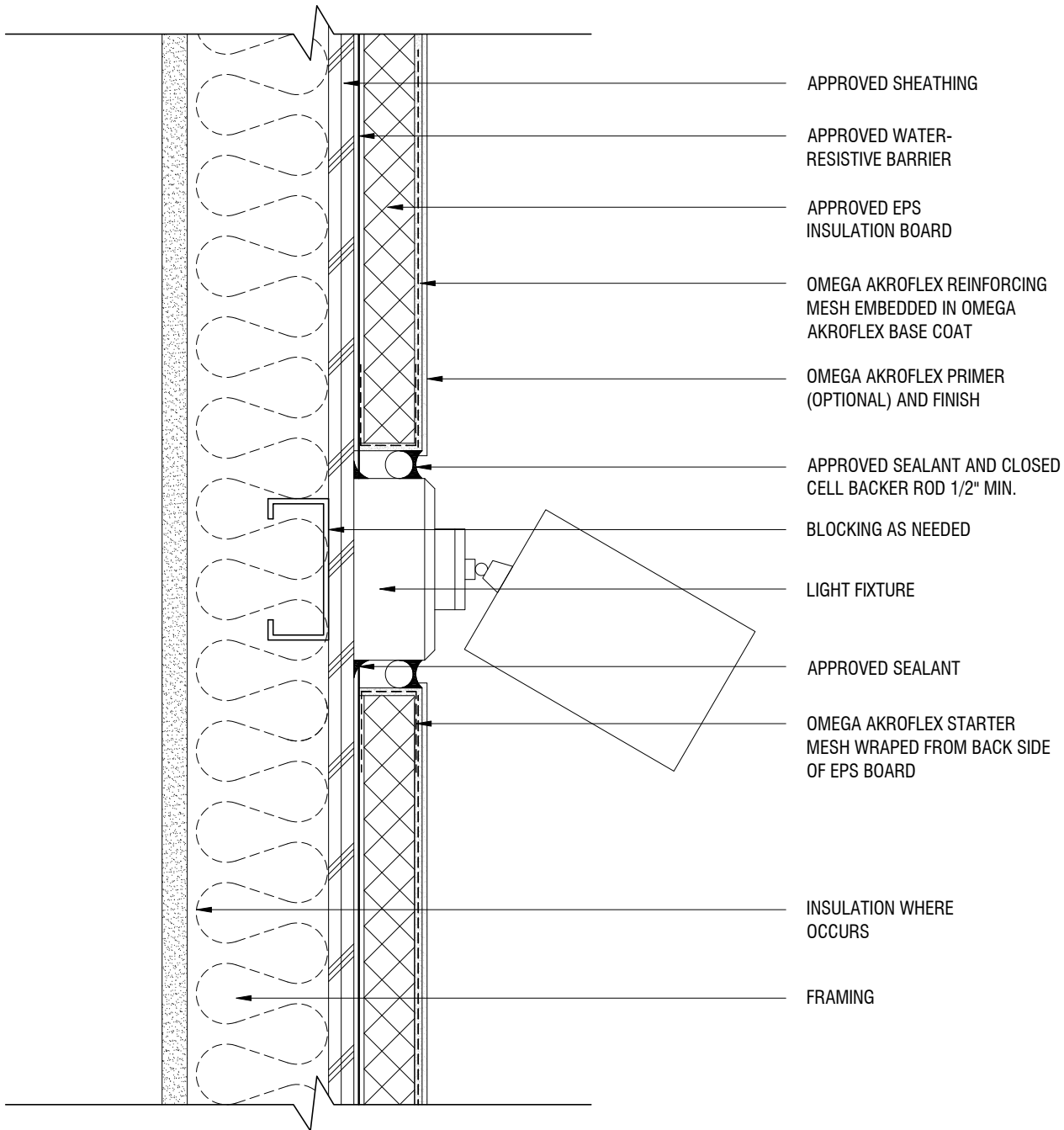
AKROFLEX WM EIFS DETAIL

TYPICAL PIPE OR CONDUIT PENETRATION

SCALE: 3"=1'-0"

DRAWING NO.: AWM 17.00

DRAWN: JUNE 2009



APPROVED SHEATHING

APPROVED WATER-RESISTIVE BARRIER

APPROVED EPS INSULATION BOARD

OMEGA AKROFLEX REINFORCING MESH EMBEDDED IN OMEGA AKROFLEX BASE COAT

OMEGA AKROFLEX PRIMER (OPTIONAL) AND FINISH

APPROVED SEALANT AND CLOSED CELL BACKER ROD 1/2" MIN.

BLOCKING AS NEEDED

LIGHT FIXTURE

APPROVED SEALANT

OMEGA AKROFLEX STARTER MESH WRAPED FROM BACK SIDE OF EPS BOARD

INSULATION WHERE OCCURS

FRAMING

THE ARCHITECTURE, ENGINEERING, AND DESIGN OF THE PROJECT USING OMEGA PRODUCTS IS THE RESPONSIBILITY OF THE PROJECT'S DESIGN PROFESSIONAL. ALL SYSTEMS MUST COMPLY WITH LOCAL BUILDING CODES AND STANDARDS. THIS DETAIL IS FOR GENERAL INFORMATION AND GUIDANCE ONLY, AND OMEGA INC. SPECIFICALLY DISCLAIMS ANY LIABILITY FOR THE USE OF THIS DETAIL AND FOR THE ARCHITECTURE, DESIGN, ENGINEERING, OR WORKMANSHIP OF ANY PROJECT. THE PROJECT DESIGN PROFESSIONAL DETERMINES, IN ITS SOLE DISCRETION, WHETHER THIS DETAIL OR A FUNCTIONALLY EQUIVALENT ALTERNATIVE IS BEST SUITED FOR THE THE PROJECT. USE OF A FUNCTIONALLY EQUIVALENT DETAIL DOES NOT VIOLATE OMEGA'S WARRANTY. THIS DETAIL IS SUBJECT TO CHANGE WITHOUT NOTICE. CONTACT OMEGA TO INSURE YOU HAVE THE MOST RECENT VERSION.



CORPORATE OFFICE
 1681 CALIFORNIA AVE., CORONA, CA 92881
 E-MAIL: INFO@OMEGA-PRODUCTS.COM
 WEBSITE: WWW.OMEGA-PRODUCTS.COM

AKROFLEX WM EIFS DETAIL

TYPICAL LIGHT PENETRATION

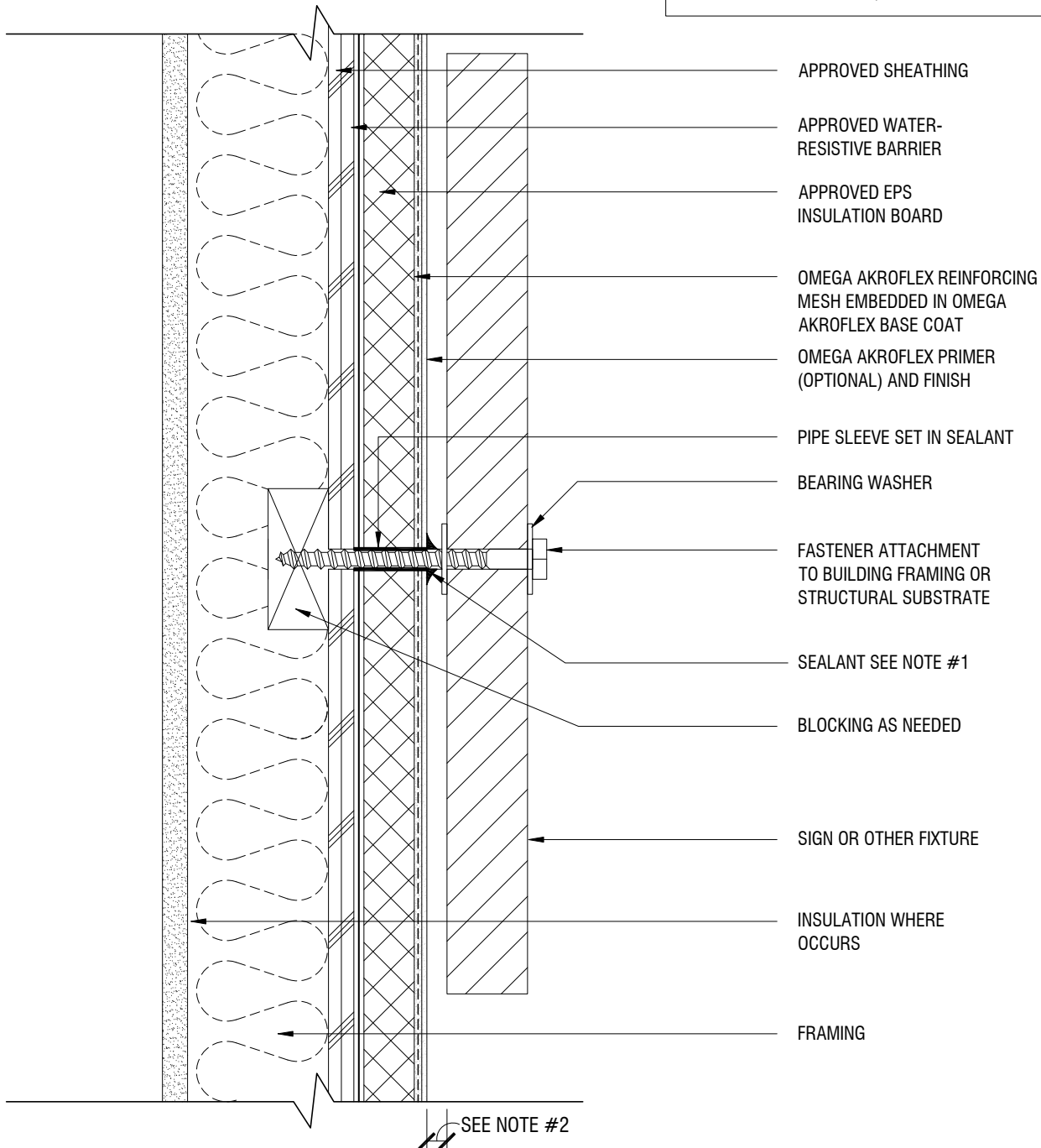
SCALE: 3"=1'-0"

DRAWING NO.: AWM 18.00

DRAWN: JUNE 2009

NOTES

1. PERIMETER OF PIPE SLEEVE IS CAULKED TO PREVENT WATER ENTRY INTO WALL
2. SIGNS AND OTHER ATTACHMENTS THAT ARE NOT SEALED TO PREVENT WATER INTRUSION SHOULD BE GAPPED A MIN. OF 1/2" FROM FINISH SURFACE



THE ARCHITECTURE, ENGINEERING, AND DESIGN OF THE PROJECT USING OMEGA PRODUCTS IS THE RESPONSIBILITY OF THE PROJECT'S DESIGN PROFESSIONAL. ALL SYSTEMS MUST COMPLY WITH LOCAL BUILDING CODES AND STANDARDS. THIS DETAIL IS FOR GENERAL INFORMATION AND GUIDANCE ONLY, AND OMEGA INC. SPECIFICALLY DISCLAIMS ANY LIABILITY FOR THE USE OF THIS DETAIL AND FOR THE ARCHITECTURE, DESIGN, ENGINEERING, OR WORKMANSHIP OF ANY PROJECT. THE PROJECT DESIGN PROFESSIONAL DETERMINES, IN ITS SOLE DISCRETION, WHETHER THIS DETAIL OR A FUNCTIONALLY EQUIVALENT ALTERNATIVE IS BEST SUITED FOR THE THE PROJECT. USE OF A FUNCTIONALLY EQUIVALENT DETAIL DOES NOT VIOLATE OMEGA'S WARRANTY. THIS DETAIL IS SUBJECT TO CHANGE WITHOUT NOTICE. CONTACT OMEGA TO INSURE YOU HAVE THE MOST RECENT VERSION.



CORPORATE OFFICE
1681 CALIFORNIA AVE., CORONA, CA 92881
E-MAIL: INFO@OMEGA-PRODUCTS.COM
WEBSITE: WWW.OMEGA-PRODUCTS.COM

AKROFLEX WM EIFS DETAIL

TYPICAL ATTACHMENT

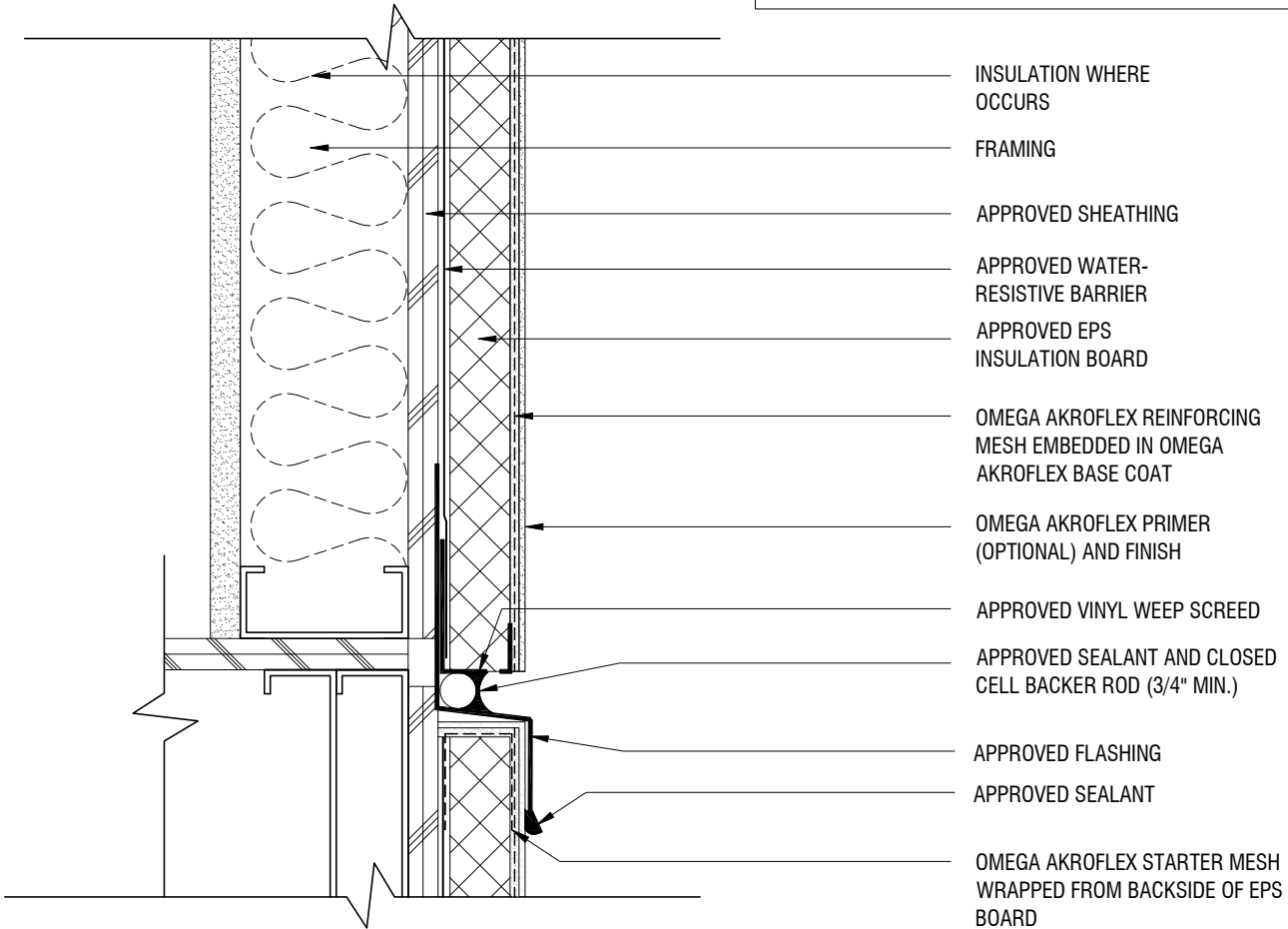
SCALE: 3"=1'-0"

DRAWING NO.: AWM 19.00

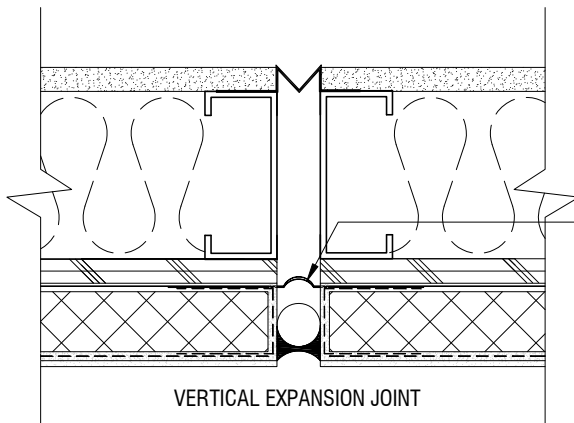
DRAWN: JUNE 2009

NOTES

1. WATER-RESISTIVE BARRIER SHALL BE CONTINUOUS ACROSS EXPANSION JOINT AND BE DESIGNED TO ALLOW MOVEMENT.
2. AN OPTIONAL FLASHING MEMBRANE MAY BE USED ACROSS THE EXPANSION JOINT.



EXPANSION JOINT AT FLOOR LINE



VERTICAL EXPANSION JOINT

FLASHING MEMBRANE, OPTIONAL
SEE NOTES 1 AND 2

THE ARCHITECTURE, ENGINEERING, AND DESIGN OF THE PROJECT USING OMEGA PRODUCTS IS THE RESPONSIBILITY OF THE PROJECT'S DESIGN PROFESSIONAL. ALL SYSTEMS MUST COMPLY WITH LOCAL BUILDING CODES AND STANDARDS. THIS DETAIL IS FOR GENERAL INFORMATION AND GUIDANCE ONLY, AND OMEGA INC. SPECIFICALLY DISCLAIMS ANY LIABILITY FOR THE USE OF THIS DETAIL AND FOR THE ARCHITECTURE, DESIGN, ENGINEERING, OR WORKMANSHIP OF ANY PROJECT. THE PROJECT DESIGN PROFESSIONAL DETERMINES, IN ITS SOLE DISCRETION, WHETHER THIS DETAIL OR A FUNCTIONALLY EQUIVALENT ALTERNATIVE IS BEST SUITED FOR THE THE PROJECT. USE OF A FUNCTIONALLY EQUIVALENT DETAIL DOES NOT VIOLATE OMEGA'S WARRANTY. THIS DETAIL IS SUBJECT TO CHANGE WITHOUT NOTICE. CONTACT OMEGA TO INSURE YOU HAVE THE MOST RECENT VERSION.



CORPORATE OFFICE
1681 CALIFORNIA AVE., CORONA, CA 92881
E-MAIL: INFO@OMEGA-PRODUCTS.COM
WEBSITE: WWW.OMEGA-PRODUCTS.COM

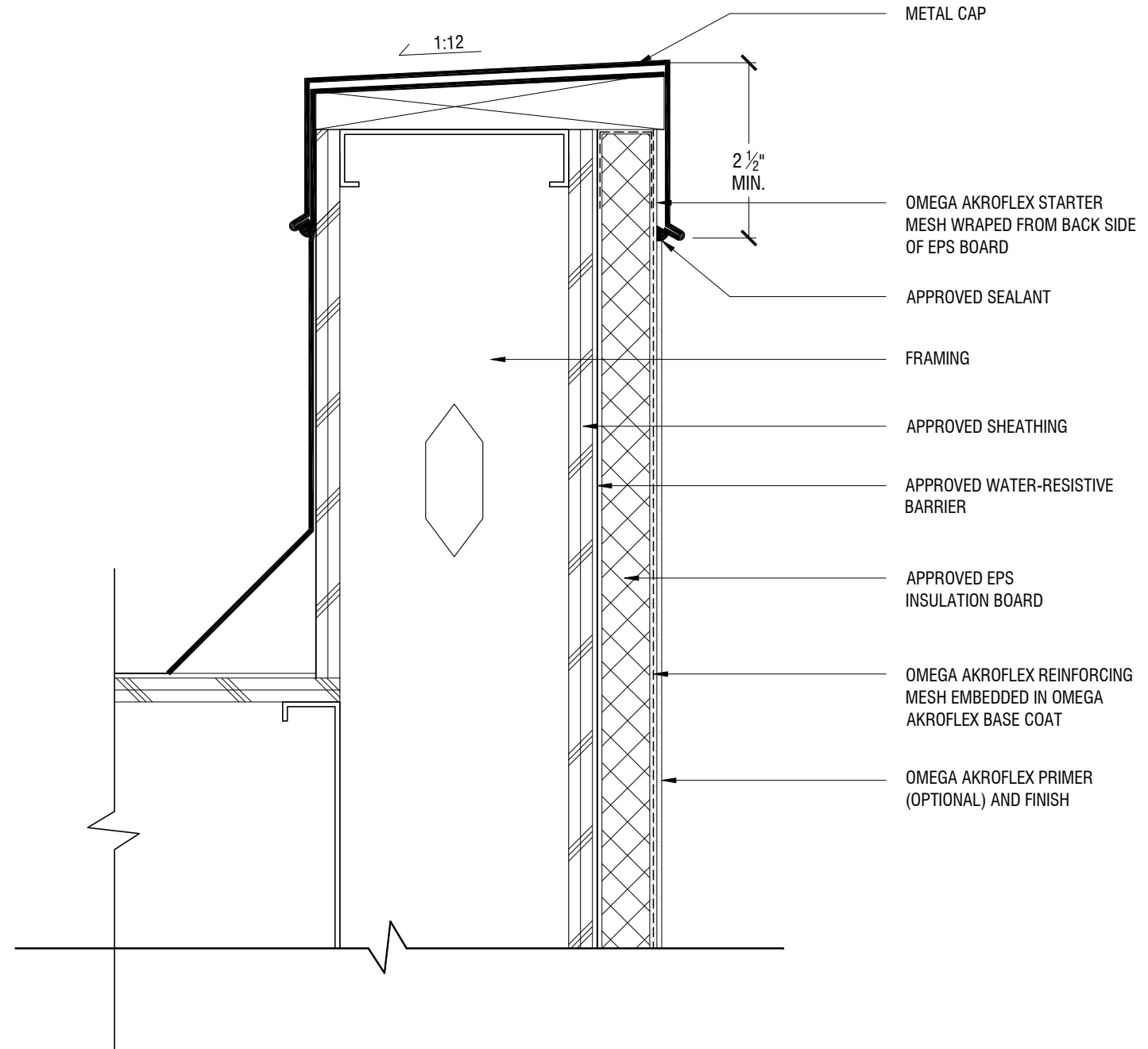
AKROFLEX WM EIFS DETAIL

TYPICAL EXPANSION JOINTS

SCALE: 3"=1'-0"

DRAWING NO.: AWM 20.00

DRAWN: FEBRUARY 2013



THE ARCHITECTURE, ENGINEERING, AND DESIGN OF THE PROJECT USING OMEGA PRODUCTS IS THE RESPONSIBILITY OF THE PROJECT'S DESIGN PROFESSIONAL. ALL SYSTEMS MUST COMPLY WITH LOCAL BUILDING CODES AND STANDARDS. THIS DETAIL IS FOR GENERAL INFORMATION AND GUIDANCE ONLY, AND OMEGA INC. SPECIFICALLY DISCLAIMS ANY LIABILITY FOR THE USE OF THIS DETAIL AND FOR THE ARCHITECTURE, DESIGN, ENGINEERING, OR WORKMANSHIP OF ANY PROJECT. THE PROJECT DESIGN PROFESSIONAL DETERMINES, IN ITS SOLE DISCRETION, WHETHER THIS DETAIL OR A FUNCTIONALLY EQUIVALENT ALTERNATIVE IS BEST SUITED FOR THE THE PROJECT. USE OF A FUNCTIONALLY EQUIVALENT DETAIL DOES NOT VIOLATE OMEGA'S WARRANTY. THIS DETAIL IS SUBJECT TO CHANGE WITHOUT NOTICE. CONTACT OMEGA TO INSURE YOU HAVE THE MOST RECENT VERSION.



CORPORATE OFFICE
 1681 CALIFORNIA AVE., CORONA, CA 92881
 E-MAIL: INFO@OMEGA-PRODUCTS.COM
 WEBSITE: WWW.OMEGA-PRODUCTS.COM

AKROFLEX WM EIFS DETAIL

TYPICAL PARAPET WITH METAL CAP

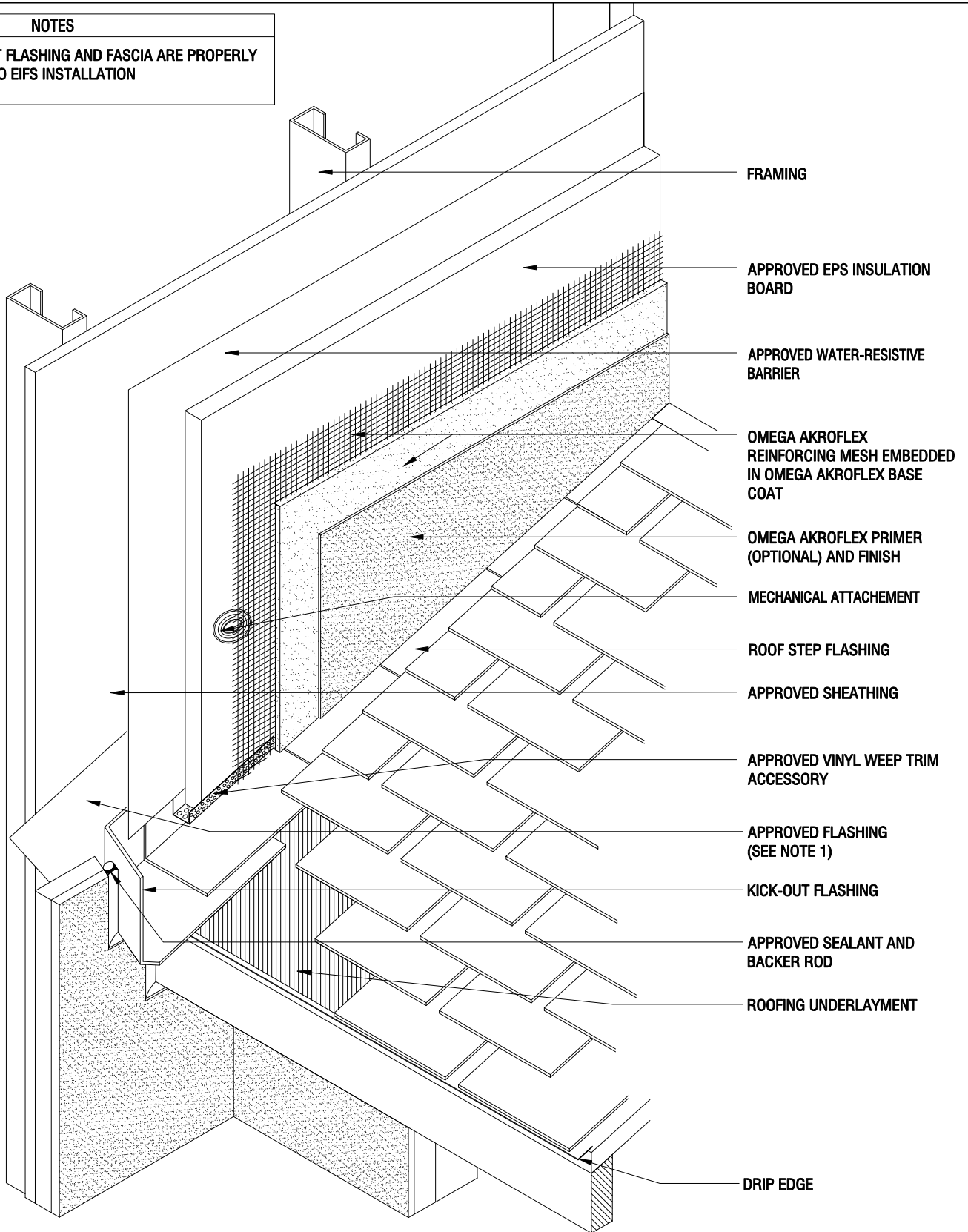
SCALE: 3"=1'-0"

DRAWING NO.: AWM 21.00

DRAWN: JUNE 2009

NOTES

1. ENSURE KICK-OUT FLASHING AND FASCIA ARE PROPERLY FLASHED PRIOR TO EIFS INSTALLATION



FRAMING

APPROVED EPS INSULATION BOARD

APPROVED WATER-RESISTIVE BARRIER

OMEGA AKROFLEX REINFORCING MESH EMBEDDED IN OMEGA AKROFLEX BASE COAT

OMEGA AKROFLEX PRIMER (OPTIONAL) AND FINISH

MECHANICAL ATTACHMENT

ROOF STEP FLASHING

APPROVED SHEATHING

APPROVED VINYL WEEP TRIM ACCESSORY

APPROVED FLASHING (SEE NOTE 1)

KICK-OUT FLASHING

APPROVED SEALANT AND BACKER ROD

ROOFING UNDERLAYMENT

DRIP EDGE

THE ARCHITECTURE, ENGINEERING, AND DESIGN OF THE PROJECT USING OMEGA PRODUCTS IS THE RESPONSIBILITY OF THE PROJECT'S DESIGN PROFESSIONAL. ALL SYSTEMS MUST COMPLY WITH LOCAL BUILDING CODES AND STANDARDS. THIS DETAIL IS FOR GENERAL INFORMATION AND GUIDANCE ONLY, AND OMEGA INC. SPECIFICALLY DISCLAIMS ANY LIABILITY FOR THE USE OF THIS DETAIL AND FOR THE ARCHITECTURE, DESIGN, ENGINEERING, OR WORKMANSHIP OF ANY PROJECT. THE PROJECT DESIGN PROFESSIONAL DETERMINES, IN ITS SOLE DISCRETION, WHETHER THIS DETAIL OR A FUNCTIONALLY EQUIVALENT ALTERNATIVE IS BEST SUITED FOR THE THE PROJECT. USE OF A FUNCTIONALLY EQUIVALENT DETAIL DOES NOT VIOLATE OMEGA'S WARRANTY. THIS DETAIL IS SUBJECT TO CHANGE WITHOUT NOTICE. CONTACT OMEGA TO INSURE YOU HAVE THE MOST RECENT VERSION.



CORPORATE OFFICE
1681 CALIFORNIA AVE., CORONA, CA 92881
E-MAIL: INFO@OMEGA-PRODUCTS.COM
WEBSITE: WWW.OMEGA-PRODUCTS.COM

AKROFLEX WM EIFS DETAIL

**ROOF/WALL KICK-OUT FLASHING
DETAIL**

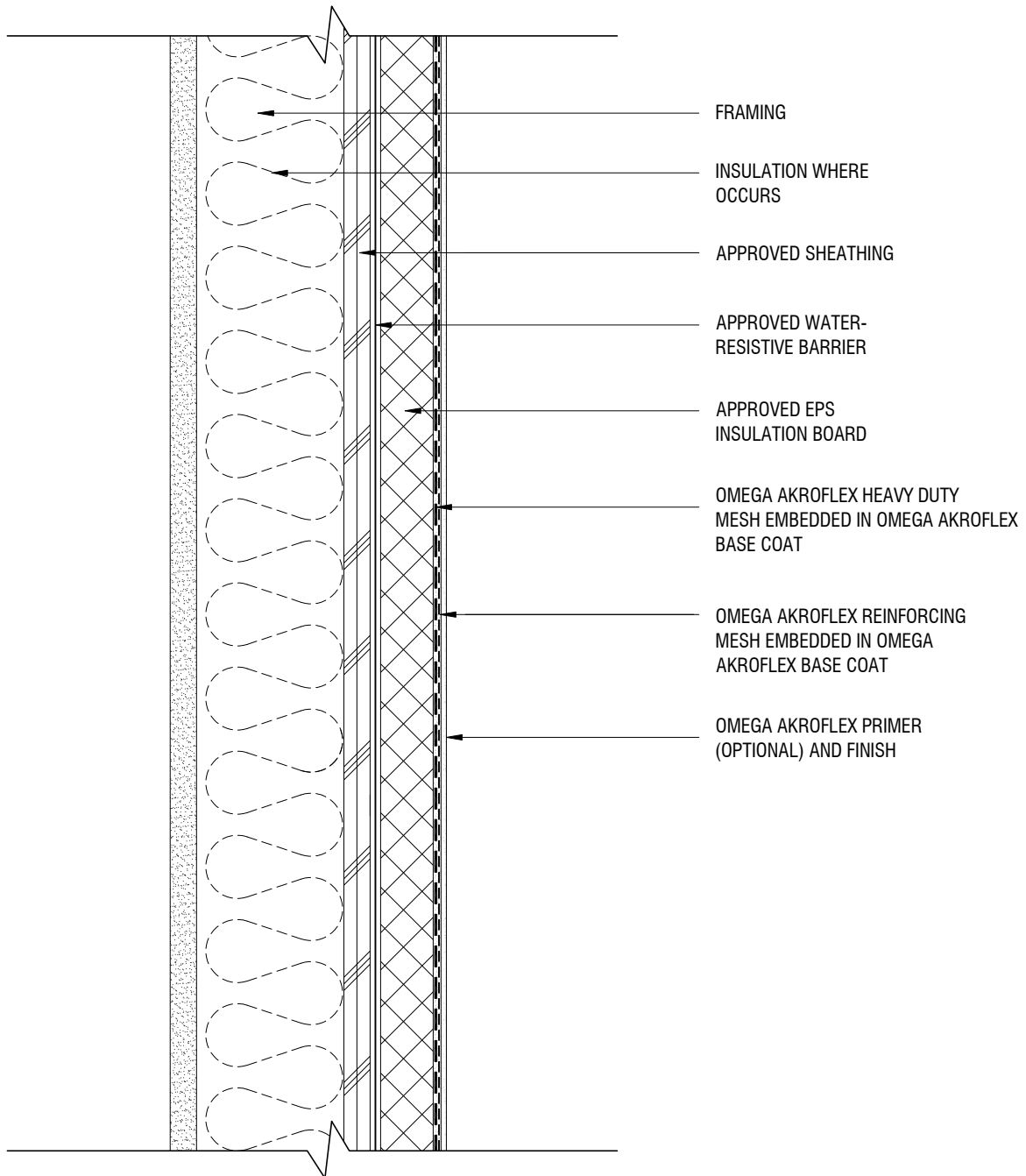
SCALE: 3"=1'-0"

DRAWING NO.: AWM 22.00

DRAWN: JUNE 2009

NOTES

1. DO NOT LAP HEAVY DUTY MESH



THE ARCHITECTURE, ENGINEERING, AND DESIGN OF THE PROJECT USING OMEGA PRODUCTS IS THE RESPONSIBILITY OF THE PROJECT'S DESIGN PROFESSIONAL. ALL SYSTEMS MUST COMPLY WITH LOCAL BUILDING CODES AND STANDARDS. THIS DETAIL IS FOR GENERAL INFORMATION AND GUIDANCE ONLY, AND OMEGA INC. SPECIFICALLY DISCLAIMS ANY LIABILITY FOR THE USE OF THIS DETAIL AND FOR THE ARCHITECTURE, DESIGN, ENGINEERING, OR WORKMANSHIP OF ANY PROJECT. THE PROJECT DESIGN PROFESSIONAL DETERMINES, IN ITS SOLE DISCRETION, WHETHER THIS DETAIL OR A FUNCTIONALLY EQUIVALENT ALTERNATIVE IS BEST SUITED FOR THE THE PROJECT. USE OF A FUNCTIONALLY EQUIVALENT DETAIL DOES NOT VIOLATE OMEGA'S WARRANTY. THIS DETAIL IS SUBJECT TO CHANGE WITHOUT NOTICE. CONTACT OMEGA TO INSURE YOU HAVE THE MOST RECENT VERSION.



CORPORATE OFFICE
 1681 CALIFORNIA AVE., CORONA, CA 92881
 E-MAIL: INFO@OMEGA-PRODUCTS.COM
 WEBSITE: WWW.OMEGA-PRODUCTS.COM

AKROFLEX WM EIFS DETAIL

HIGH IMPACT ASSEMBLY

SCALE: 3"=1'-0"

DRAWING NO.: AWM 23.00

DRAWN: JUNE 2009