



Table of Contents

APB 01APPLICATION OVER APPROVED SHEATHING

APB 02APPLICATION OVER APPROVED CONCRETE OR MASONRY

APB 03 TYPICAL BOARD LAYOUT FOR STRUCTURAL PENETRATIONS

APB 04 ...EPS INSULATION BOARD LAYOUT OPTIONAL MECH ATTACHMENT

APB 05 TYPICAL AESTHETIC REVEAL

APB 06 TYPICAL AESTHETIC PLANT-ON

APB 07TYPICAL SOFFIT DETAIL WITH DRIP REVEAL

APB 08 TYPICAL DIRECT APPLIED SOFFIT DETAIL

APB 09 TYPICAL SOFFIT VENT DETAIL

APB 10TYPICAL TERMINATION AT FOUNDATION

APB 11..... TYPICAL TERMINATION AT DISSIMILAR MATERIALS

APB 12..... TYPICAL TERMINATION AT WINDOW HEAD AND SILL

APB 13.....TYPICAL TERMINATION AT WINDOW JAMB

APB 14..... TYPICAL TERMINATION AT DOOR JAMB

APB 15..... TYPICAL TERMINATION AT DOOR HEAD

APB 16 TYPICAL TERMINATION AT DECK

APB 17..... TYPICAL PIPE OR CONDUIT PENETRATION

APB 18.....TYPICAL LIGHT PENETRATION

APB 19.....TYPICAL ATTACHMENT

APB 20 TYPICAL EXPANSION JOINTS

APB 21TYPICAL PARAPET WITH METAL CAP

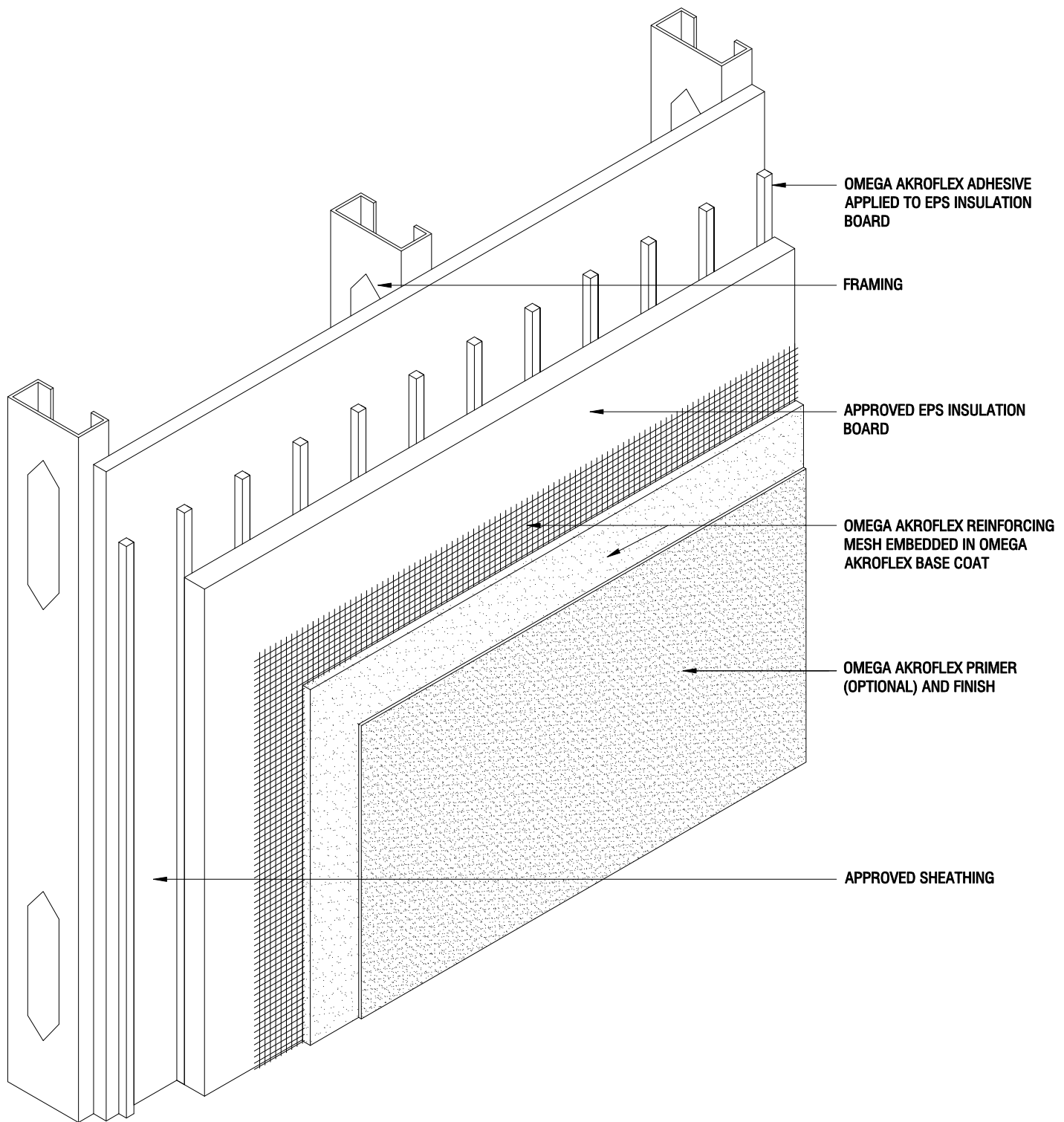
APB 22 ROOF/WALL KICK-OUT FLASHING DETAIL

APB 23 HIGH IMPACT ASSEMBLY

APB 24 TYPICAL OR HEAVY DUTY CORNER DETAILS

DISCLAIMER

Omega Products International [Manufacturer] MAKES NO WARRANTY OF MERCHANTABILITY OR FITNESS FOR A PARTICULAR PURPOSE WITH RESPECT TO THE PRODUCT(S) SOLD HEREIN. The recommendations, suggestions, statements and technical data are based on the best knowledge available to Manufacturer and are given for informational purposes ONLY and without any responsibility for their use. It is expressly understood and agreed, as a condition of the use of this product, that the buyer's sole and exclusive remedy for any claimed defective product against Manufacturer shall be the replacement of products actually proven to be defective. Handling and use of the products are beyond the control of Manufacturer; therefore, no warranty is made, expressed or implied, as to the results obtained from the use of the product or against any claims for infringement of patents resulting from use of the product. Under no circumstance shall Manufacturer be liable for incidental or consequential damages arising out of the use or the improper application of the product. Before applying the product, the user shall determine the suitability of the product for his/her independent use, assuming all risks and liability whatsoever in connection therewith. This writing constitutes a complete and exclusive statement of the understanding between Manufacturer and Buyer.



OMEGA AKROFLEX ADHESIVE
APPLIED TO EPS INSULATION
BOARD

FRAMING

APPROVED EPS INSULATION
BOARD

OMEGA AKROFLEX REINFORCING
MESH EMBEDDED IN OMEGA
AKROFLEX BASE COAT

OMEGA AKROFLEX PRIMER
(OPTIONAL) AND FINISH

APPROVED SHEATHING

THE ARCHITECTURE, ENGINEERING, AND DESIGN OF THE PROJECT USING OMEGA PRODUCTS IS THE RESPONSIBILITY OF THE PROJECT'S DESIGN PROFESSIONAL. ALL SYSTEMS MUST COMPLY WITH LOCAL BUILDING CODES AND STANDARDS. THIS DETAIL IS FOR GENERAL INFORMATION AND GUIDANCE ONLY, AND OMEGA INC. SPECIFICALLY DISCLAIMS ANY LIABILITY FOR THE USE OF THIS DETAIL AND FOR THE ARCHITECTURE, DESIGN, ENGINEERING, OR WORKMANSHIP OF ANY PROJECT. THE PROJECT DESIGN PROFESSIONAL DETERMINES, IN ITS SOLE DISCRETION, WHETHER THIS DETAIL OR A FUNCTIONALLY EQUIVALENT ALTERNATIVE IS BEST SUITED FOR THE THE PROJECT. USE OF A FUNCTIONALLY EQUIVALENT DETAIL DOES NOT VIOLATE OMEGA'S WARRANTY. THIS DETAIL IS SUBJECT TO CHANGE WITHOUT NOTICE. CONTACT OMEGA TO INSURE YOU HAVE THE MOST RECENT VERSION.



CORPORATE OFFICE
1681 CALIFORNIA AVE., CORONA, CA 92881
E-MAIL: INFO@OMEGA-PRODUCTS.COM
WEBSITE: WWW.OMEGA-PRODUCTS.COM

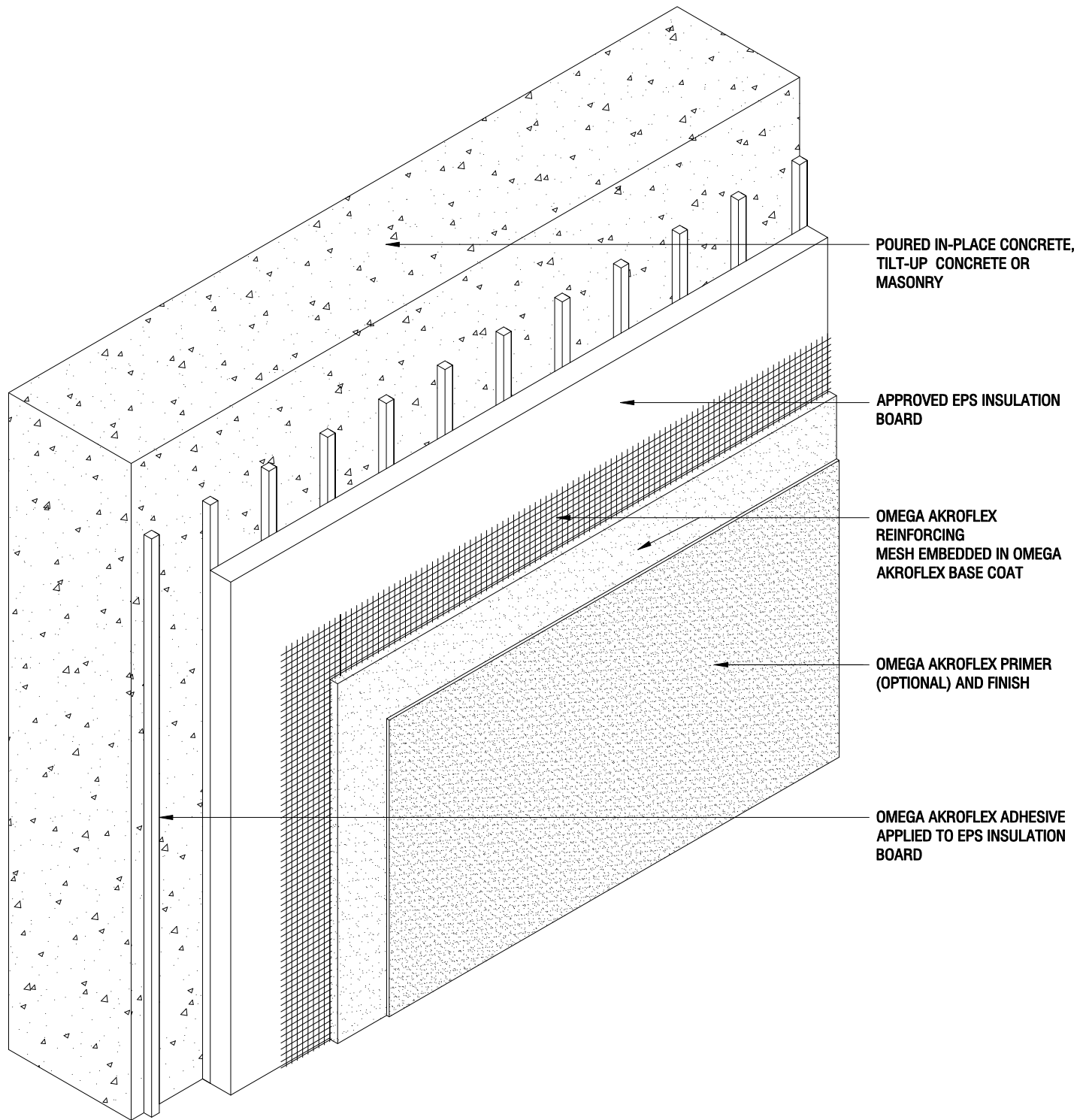
AKROFLEX BARRIER EIFS DETAIL

APPLICATION OVER APPROVED SHEATHING

SCALE: 3" = 1'-0"

DRAWING NO.: APB 01.00

DRAWN: JUNE 2009



POURED IN-PLACE CONCRETE,
TILT-UP CONCRETE OR
MASONRY

APPROVED EPS INSULATION
BOARD

OMEGA AKROFLEX
REINFORCING
MESH EMBEDDED IN OMEGA
AKROFLEX BASE COAT

OMEGA AKROFLEX PRIMER
(OPTIONAL) AND FINISH

OMEGA AKROFLEX ADHESIVE
APPLIED TO EPS INSULATION
BOARD

THE ARCHITECTURE, ENGINEERING, AND DESIGN OF THE PROJECT USING OMEGA PRODUCTS IS THE RESPONSIBILITY OF THE PROJECT'S DESIGN PROFESSIONAL. ALL SYSTEMS MUST COMPLY WITH LOCAL BUILDING CODES AND STANDARDS. THIS DETAIL IS FOR GENERAL INFORMATION AND GUIDANCE ONLY, AND OMEGA INC. SPECIFICALLY DISCLAIMS ANY LIABILITY FOR THE USE OF THIS DETAIL AND FOR THE ARCHITECTURE, DESIGN, ENGINEERING, OR WORKMANSHIP OF ANY PROJECT. THE PROJECT DESIGN PROFESSIONAL DETERMINES, IN ITS SOLE DISCRETION, WHETHER THIS DETAIL OR A FUNCTIONALLY EQUIVALENT ALTERNATIVE IS BEST SUITED FOR THE THE PROJECT. USE OF A FUNCTIONALLY EQUIVALENT DETAIL DOES NOT VIOLATE OMEGA'S WARRANTY. THIS DETAIL IS SUBJECT TO CHANGE WITHOUT NOTICE. CONTACT OMEGA TO INSURE YOU HAVE THE MOST RECENT VERSION.



CORPORATE OFFICE
1681 CALIFORNIA AVE., CORONA, CA 92881
E-MAIL: INFO@OMEGA-PRODUCTS.COM
WEBSITE: WWW.OMEGA-PRODUCTS.COM

AKROFLEX BARRIER EIFS DETAIL

APPLICATION OVER APPROVED
CONCRETE OR MASONRY

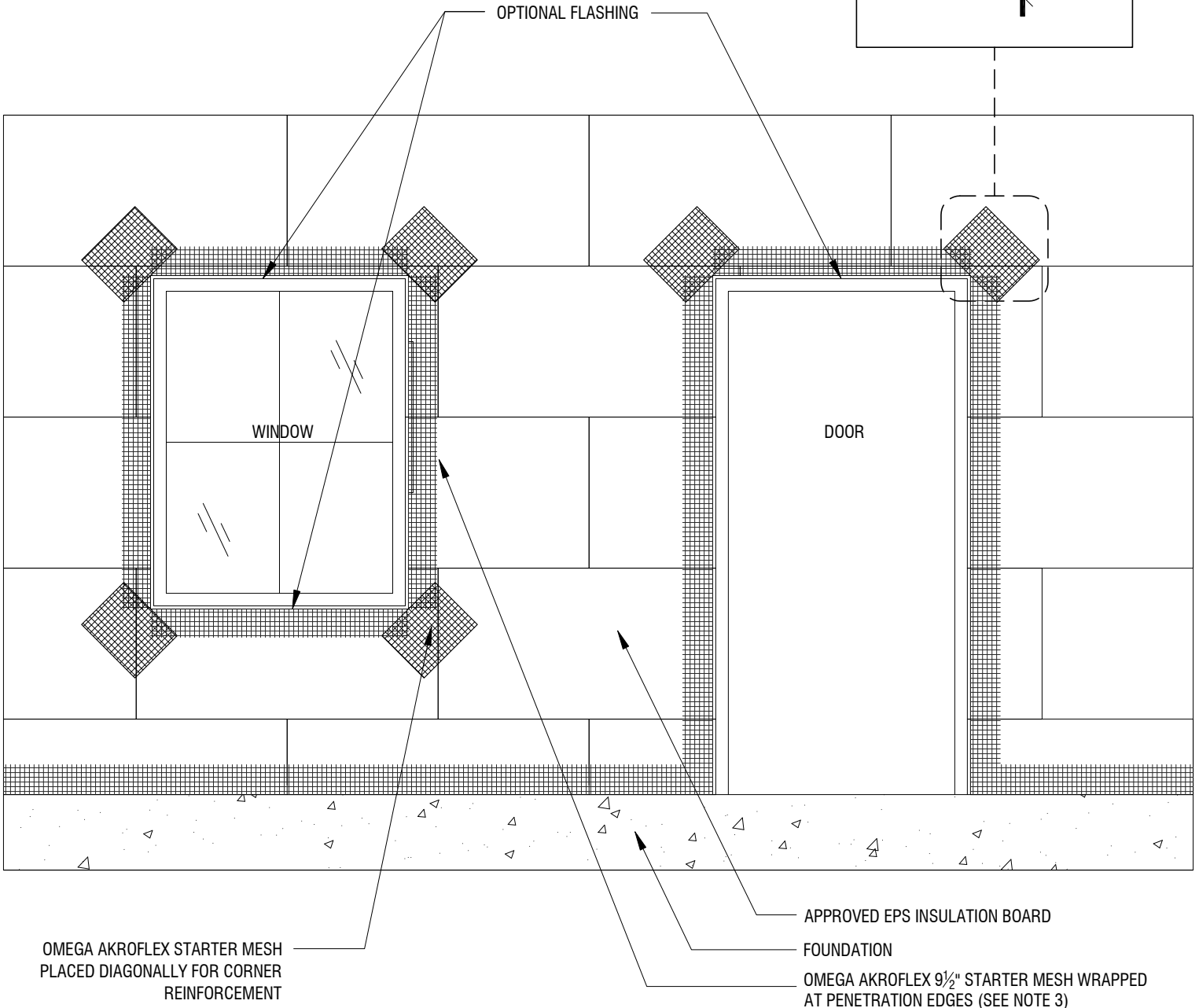
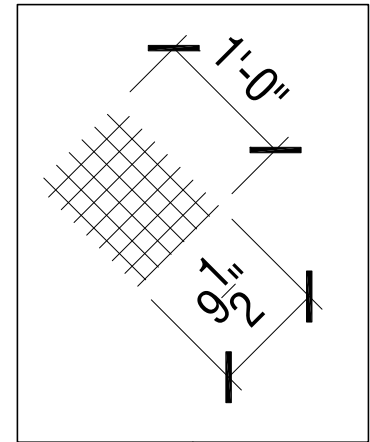
SCALE: 3"=1'-0"

DRAWING NO.: APB 02.00

DRAWN: JUNE 2009

NOTES

1. EPS BOARD JOINTS SHALL BE STAGGERED AND SHALL NOT ALIGN WITH SHEATHING JOINTS.
2. EPS BOARD JOINTS SHALL NOT ALIGN WITH THE CORNERS OF OPENINGS
3. APPROVED VINYL ACCESSORY MAY BE USED IN LIEU OF WRAPPED MESH.



THE ARCHITECTURE, ENGINEERING, AND DESIGN OF THE PROJECT USING OMEGA PRODUCTS IS THE RESPONSIBILITY OF THE PROJECT'S DESIGN PROFESSIONAL. ALL SYSTEMS MUST COMPLY WITH LOCAL BUILDING CODES AND STANDARDS. THIS DETAIL IS FOR GENERAL INFORMATION AND GUIDANCE ONLY, AND OMEGA INC. SPECIFICALLY DISCLAIMS ANY LIABILITY FOR THE USE OF THIS DETAIL AND FOR THE ARCHITECTURE, DESIGN, ENGINEERING, OR WORKMANSHIP OF ANY PROJECT. THE PROJECT DESIGN PROFESSIONAL DETERMINES, IN ITS SOLE DISCRETION, WHETHER THIS DETAIL OR A FUNCTIONALLY EQUIVALENT ALTERNATIVE IS BEST SUITED FOR THE THE PROJECT. USE OF A FUNCTIONALLY EQUIVALENT DETAIL DOES NOT VIOLATE OMEGA'S WARRANTY. THIS DETAIL IS SUBJECT TO CHANGE WITHOUT NOTICE. CONTACT OMEGA TO INSURE YOU HAVE THE MOST RECENT VERSION.



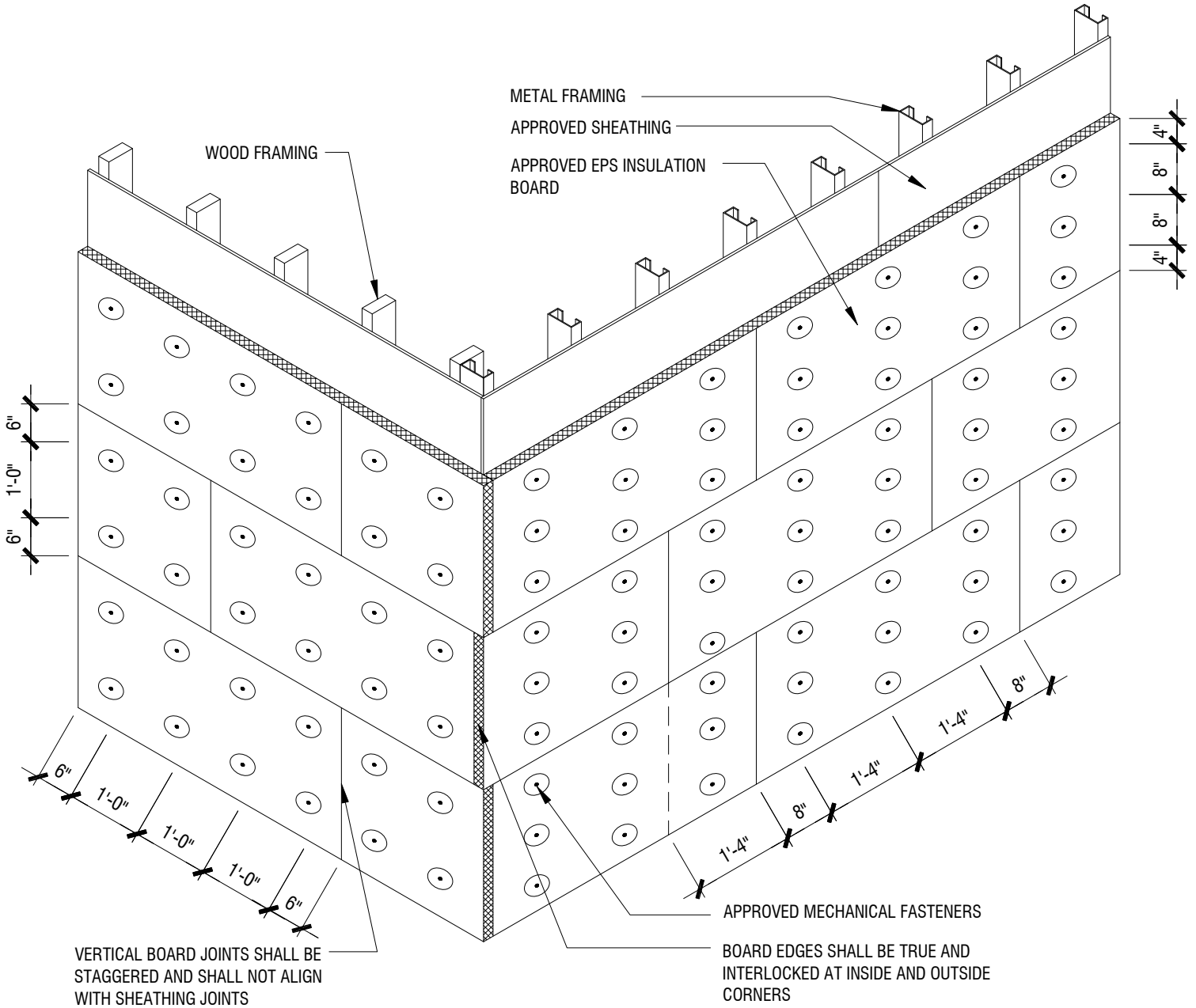
CORPORATE OFFICE
 1681 CALIFORNIA AVE., CORONA, CA 92881
 E-MAIL: INFO@OMEGA-PRODUCTS.COM
 WEBSITE: WWW.OMEGA-PRODUCTS.COM

**AKROFLEX BARRIER
 EIFS DETAIL**

**TYPICAL BOARD LAYOUT FOR
 STRUCTURAL PENETRATIONS**

NOTES

- FASTENER SPACING MAY VARY DUE TO FRAMING AND OR FASTENER MANUFACTURERS SPECIFICATIONS



THE ARCHITECTURE, ENGINEERING, AND DESIGN OF THE PROJECT USING OMEGA PRODUCTS IS THE RESPONSIBILITY OF THE PROJECT'S DESIGN PROFESSIONAL. ALL SYSTEMS MUST COMPLY WITH LOCAL BUILDING CODES AND STANDARDS. THIS DETAIL IS FOR GENERAL INFORMATION AND GUIDANCE ONLY, AND OMEGA INC. SPECIFICALLY DISCLAIMS ANY LIABILITY FOR THE USE OF THIS DETAIL AND FOR THE ARCHITECTURE, DESIGN, ENGINEERING, OR WORKMANSHIP OF ANY PROJECT. THE PROJECT DESIGN PROFESSIONAL DETERMINES, IN ITS SOLE DISCRETION, WHETHER THIS DETAIL OR A FUNCTIONALLY EQUIVALENT ALTERNATIVE IS BEST SUITED FOR THE THE PROJECT. USE OF A FUNCTIONALLY EQUIVALENT DETAIL DOES NOT VIOLATE OMEGA'S WARRANTY. THIS DETAIL IS SUBJECT TO CHANGE WITHOUT NOTICE. CONTACT OMEGA TO INSURE YOU HAVE THE MOST RECENT VERSION.

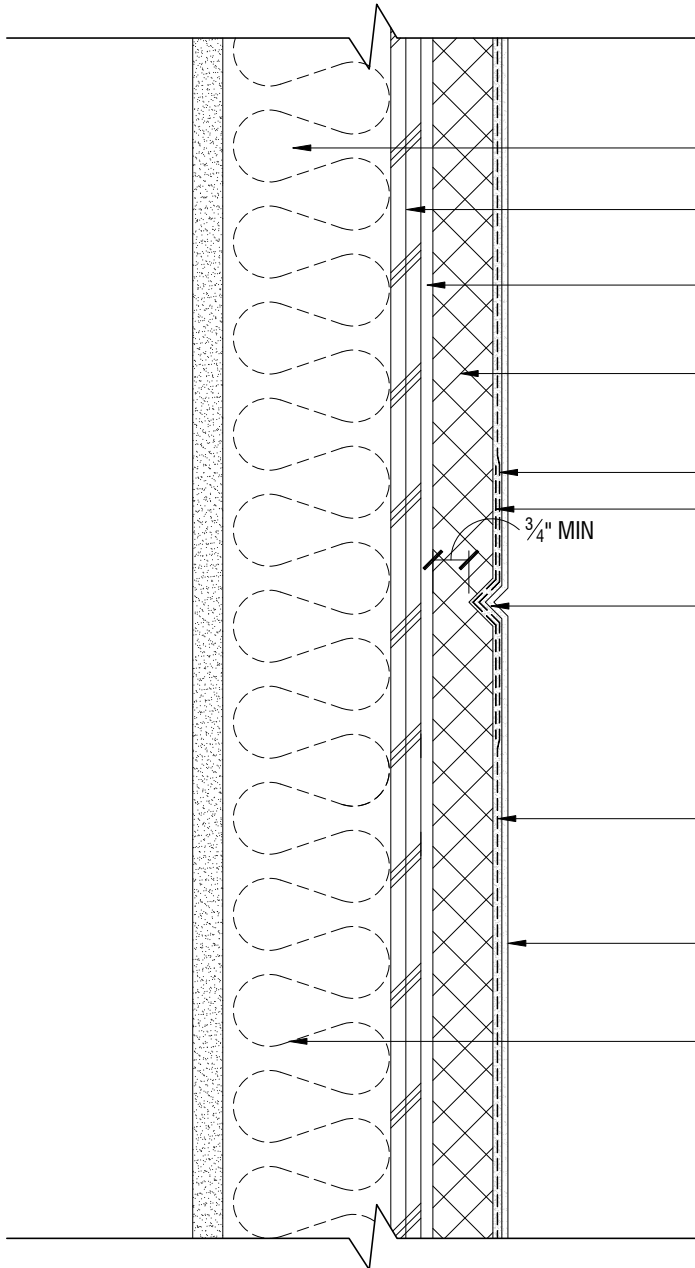
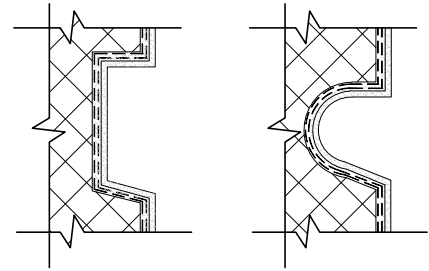


CORPORATE OFFICE
 1681 CALIFORNIA AVE., CORONA, CA 92881
 E-MAIL: INFO@OMEGA-PRODUCTS.COM
 WEBSITE: WWW.OMEGA-PRODUCTS.COM

**AKROFLEX BARRIER
 EIFS DETAIL**

**EPS INSULATION BOARD LAYOUT
 OPTIONAL MECH ATTACHMENT**

ALTERNATE REVEAL SHAPES



- FRAMING
- APPROVED SHEATHING
- OMEGA AKROFLEX ADHESIVE
- APPROVED EPS INSULATION BOARD
- OMEGA AKROFLEX STARTER MESH
- LAP STARTER MESH A MINIMUM OF 2½ INCHES
- 3/4" MIN
- AESTHETIC REVEAL
- OMEGA AKROFLEX REINFORCING MESH EMBEDDED IN OMEGA AKROFLEX BASE COAT
- OMEGA AKROFLEX PRIMER (OPTIONAL) AND FINISH
- INSULATION WHERE OCCURS

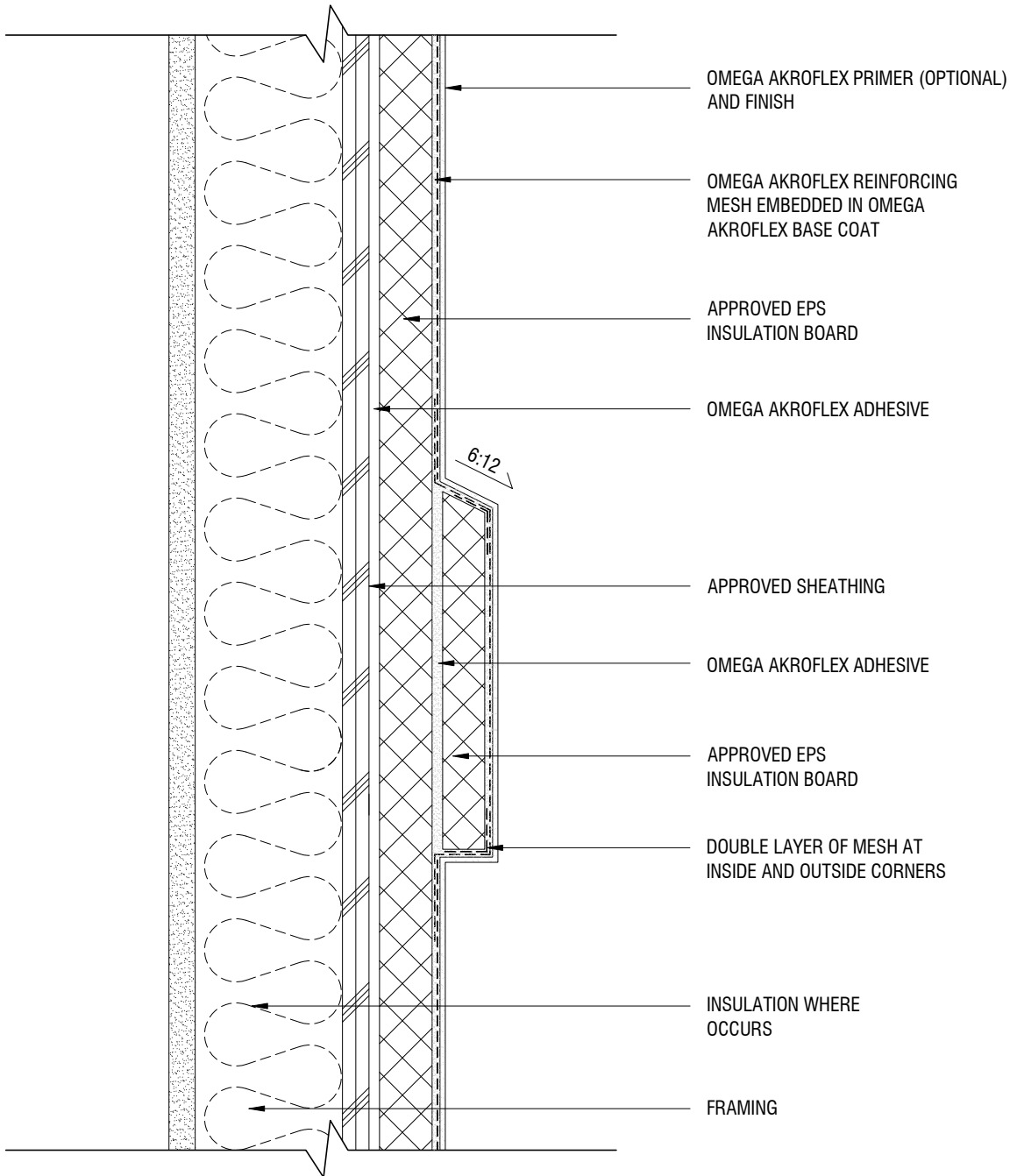
THE ARCHITECTURE, ENGINEERING, AND DESIGN OF THE PROJECT USING OMEGA PRODUCTS IS THE RESPONSIBILITY OF THE PROJECT'S DESIGN PROFESSIONAL. ALL SYSTEMS MUST COMPLY WITH LOCAL BUILDING CODES AND STANDARDS. THIS DETAIL IS FOR GENERAL INFORMATION AND GUIDANCE ONLY, AND OMEGA INC. SPECIFICALLY DISCLAIMS ANY LIABILITY FOR THE USE OF THIS DETAIL AND FOR THE ARCHITECTURE, DESIGN, ENGINEERING, OR WORKMANSHIP OF ANY PROJECT. THE PROJECT DESIGN PROFESSIONAL DETERMINES, IN ITS SOLE DISCRETION, WHETHER THIS DETAIL OR A FUNCTIONALLY EQUIVALENT ALTERNATIVE IS BEST SUITED FOR THE THE PROJECT. USE OF A FUNCTIONALLY EQUIVALENT DETAIL DOES NOT VIOLATE OMEGA'S WARRANTY. THIS DETAIL IS SUBJECT TO CHANGE WITHOUT NOTICE. CONTACT OMEGA TO INSURE YOU HAVE THE MOST RECENT VERSION.



CORPORATE OFFICE
 1681 CALIFORNIA AVE., CORONA, CA 92881
 E-MAIL: INFO@OMEGA-PRODUCTS.COM
 WEBSITE: WWW.OMEGA-PRODUCTS.COM

**AKROFLEX BARRIER
EIFS DETAIL**

TYPICAL AESTHETIC REVEAL



THE ARCHITECTURE, ENGINEERING, AND DESIGN OF THE PROJECT USING OMEGA PRODUCTS IS THE RESPONSIBILITY OF THE PROJECT'S DESIGN PROFESSIONAL. ALL SYSTEMS MUST COMPLY WITH LOCAL BUILDING CODES AND STANDARDS. THIS DETAIL IS FOR GENERAL INFORMATION AND GUIDANCE ONLY, AND OMEGA INC. SPECIFICALLY DISCLAIMS ANY LIABILITY FOR THE USE OF THIS DETAIL AND FOR THE ARCHITECTURE, DESIGN, ENGINEERING, OR WORKMANSHIP OF ANY PROJECT. THE PROJECT DESIGN PROFESSIONAL DETERMINES, IN ITS SOLE DISCRETION, WHETHER THIS DETAIL OR A FUNCTIONALLY EQUIVALENT ALTERNATIVE IS BEST SUITED FOR THE THE PROJECT. USE OF A FUNCTIONALLY EQUIVALENT DETAIL DOES NOT VIOLATE OMEGA'S WARRANTY. THIS DETAIL IS SUBJECT TO CHANGE WITHOUT NOTICE. CONTACT OMEGA TO INSURE YOU HAVE THE MOST RECENT VERSION.



CORPORATE OFFICE
 1681 CALIFORNIA AVE., CORONA, CA 92881
 E-MAIL: INFO@OMEGA-PRODUCTS.COM
 WEBSITE: WWW.OMEGA-PRODUCTS.COM

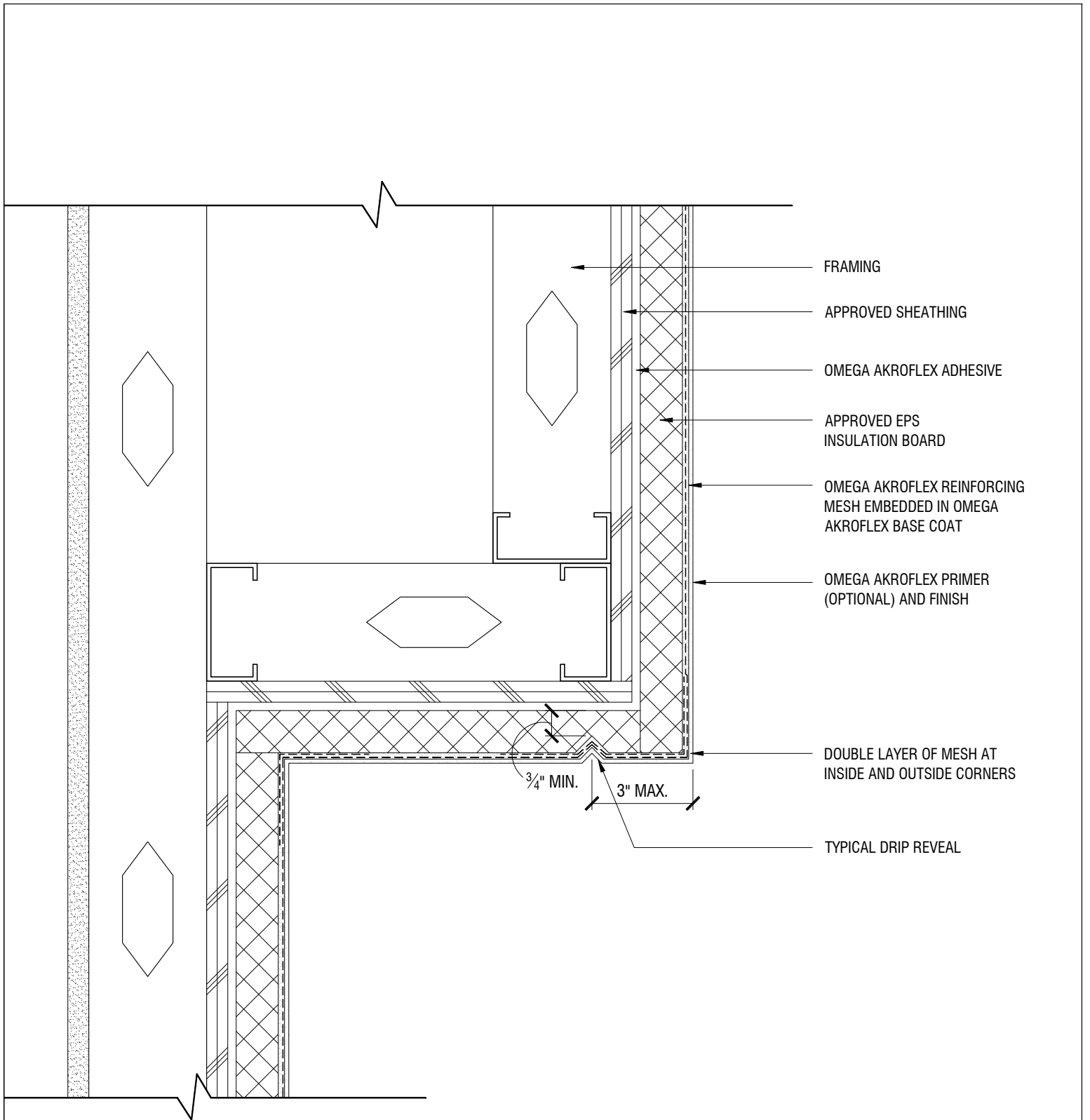
AKROFLEX BARRIER EIFS DETAIL

TYPICAL AESTHETIC PLANT-ON

SCALE: 3"=1'-0"

DRAWING NO.: APB 06.00

DRAWN: JUNE 2009



THE ARCHITECTURE, ENGINEERING, AND DESIGN OF THE PROJECT USING OMEGA PRODUCTS IS THE RESPONSIBILITY OF THE PROJECT'S DESIGN PROFESSIONAL. ALL SYSTEMS MUST COMPLY WITH LOCAL BUILDING CODES AND STANDARDS. THIS DETAIL IS FOR GENERAL INFORMATION AND GUIDANCE ONLY, AND OMEGA INC. SPECIFICALLY DISCLAIMS ANY LIABILITY FOR THE USE OF THIS DETAIL AND FOR THE ARCHITECTURE, DESIGN, ENGINEERING, OR WORKMANSHIP OF ANY PROJECT. THE PROJECT DESIGN PROFESSIONAL DETERMINES, IN ITS SOLE DISCRETION, WHETHER THIS DETAIL OR A FUNCTIONALLY EQUIVALENT ALTERNATIVE IS BEST SUITED FOR THE THE PROJECT. USE OF A FUNCTIONALLY EQUIVALENT DETAIL DOES NOT VIOLATE OMEGA'S WARRANTY. THIS DETAIL IS SUBJECT TO CHANGE WITHOUT NOTICE. CONTACT OMEGA TO INSURE YOU HAVE THE MOST RECENT VERSION.



CORPORATE OFFICE
 1681 CALIFORNIA AVE., CORONA, CA 92881
 E-MAIL: INFO@OMEGA-PRODUCTS.COM
 WEBSITE: WWW.OMEGA-PRODUCTS.COM

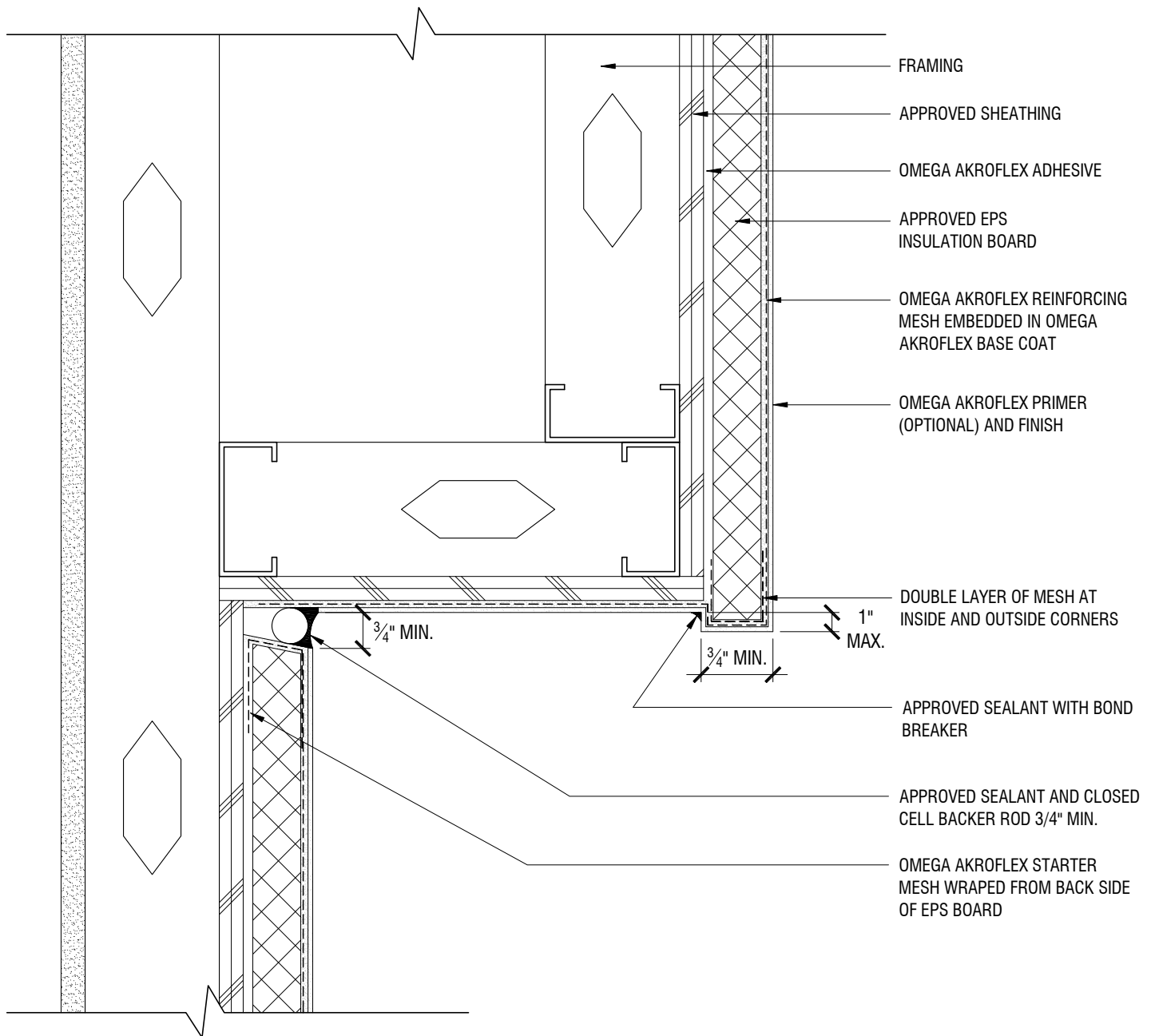
AKROFLEX BARRIER EIFS DETAIL

TYPICAL SOFFIT DETAIL WITH DRIP REVEAL

SCALE: 3"=1'-0"

DRAWING NO.: APB 07.00

DRAWN: JUNE 2009



THE ARCHITECTURE, ENGINEERING, AND DESIGN OF THE PROJECT USING OMEGA PRODUCTS IS THE RESPONSIBILITY OF THE PROJECT'S DESIGN PROFESSIONAL. ALL SYSTEMS MUST COMPLY WITH LOCAL BUILDING CODES AND STANDARDS. THIS DETAIL IS FOR GENERAL INFORMATION AND GUIDANCE ONLY, AND OMEGA INC. SPECIFICALLY DISCLAIMS ANY LIABILITY FOR THE USE OF THIS DETAIL AND FOR THE ARCHITECTURE, DESIGN, ENGINEERING, OR WORKMANSHIP OF ANY PROJECT. THE PROJECT DESIGN PROFESSIONAL DETERMINES, IN ITS SOLE DISCRETION, WHETHER THIS DETAIL OR A FUNCTIONALLY EQUIVALENT ALTERNATIVE IS BEST SUITED FOR THE THE PROJECT. USE OF A FUNCTIONALLY EQUIVALENT DETAIL DOES NOT VIOLATE OMEGA'S WARRANTY. THIS DETAIL IS SUBJECT TO CHANGE WITHOUT NOTICE. CONTACT OMEGA TO INSURE YOU HAVE THE MOST RECENT VERSION.



CORPORATE OFFICE
 1681 CALIFORNIA AVE., CORONA, CA 92881
 E-MAIL: INFO@OMEGA-PRODUCTS.COM
 WEBSITE: WWW.OMEGA-PRODUCTS.COM

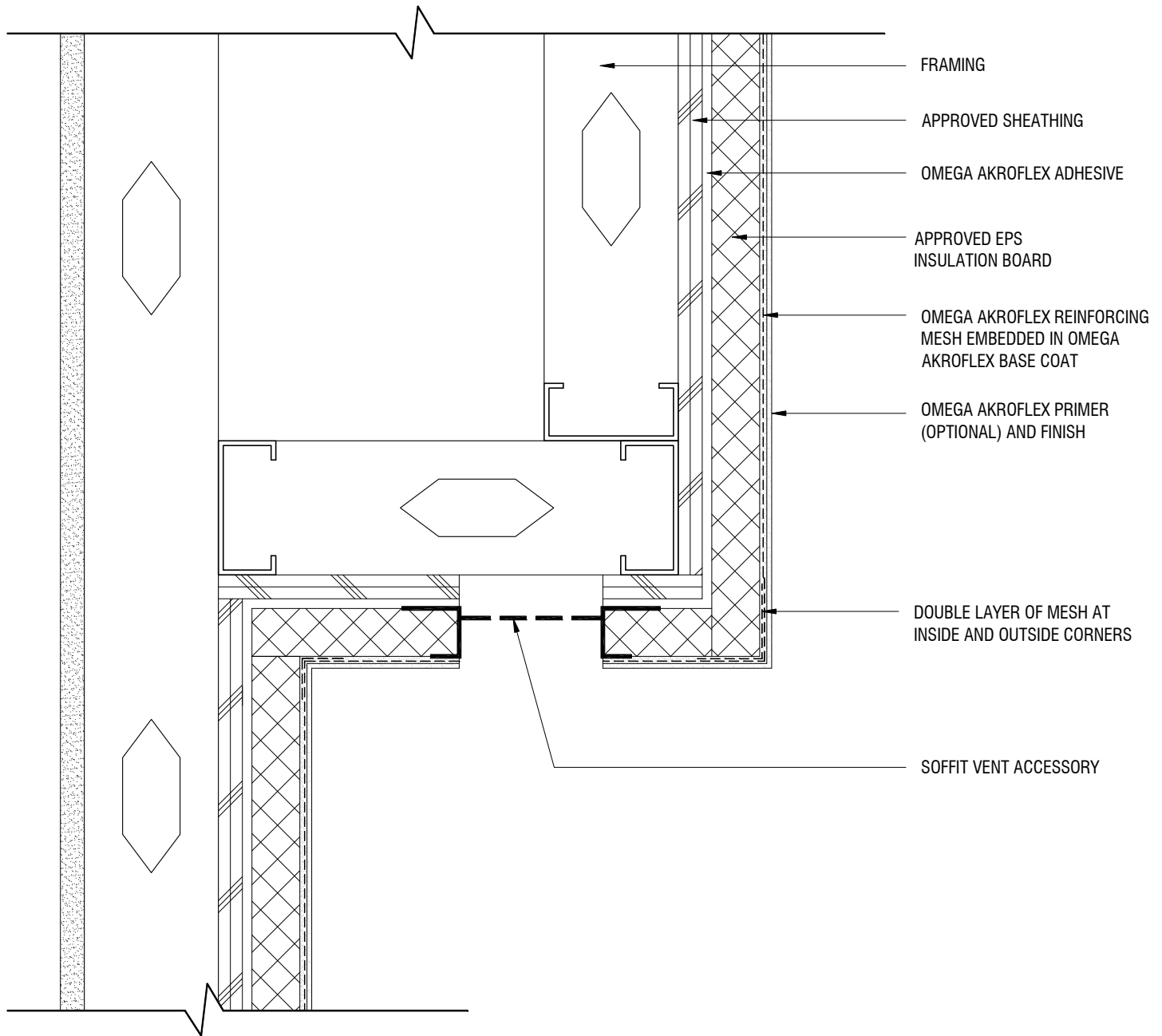
AKROFLEX BARRIER EIFS DETAIL

TYPICAL DIRECT APPLIED SOFFIT DETAIL

SCALE: 3"=1'-0"

DRAWING NO.: APB 08.00

DRAWN: JUNE 2009



- FRAMING
- APPROVED SHEATHING
- OMEGA AKROFLEX ADHESIVE
- APPROVED EPS INSULATION BOARD
- OMEGA AKROFLEX REINFORCING MESH EMBEDDED IN OMEGA AKROFLEX BASE COAT
- OMEGA AKROFLEX PRIMER (OPTIONAL) AND FINISH
- DOUBLE LAYER OF MESH AT INSIDE AND OUTSIDE CORNERS
- SOFFIT VENT ACCESSORY

THE ARCHITECTURE, ENGINEERING, AND DESIGN OF THE PROJECT USING OMEGA PRODUCTS IS THE RESPONSIBILITY OF THE PROJECT'S DESIGN PROFESSIONAL. ALL SYSTEMS MUST COMPLY WITH LOCAL BUILDING CODES AND STANDARDS. THIS DETAIL IS FOR GENERAL INFORMATION AND GUIDANCE ONLY, AND OMEGA INC. SPECIFICALLY DISCLAIMS ANY LIABILITY FOR THE USE OF THIS DETAIL AND FOR THE ARCHITECTURE, DESIGN, ENGINEERING, OR WORKMANSHIP OF ANY PROJECT. THE PROJECT DESIGN PROFESSIONAL DETERMINES, IN ITS SOLE DISCRETION, WHETHER THIS DETAIL OR A FUNCTIONALLY EQUIVALENT ALTERNATIVE IS BEST SUITED FOR THE THE PROJECT. USE OF A FUNCTIONALLY EQUIVALENT DETAIL DOES NOT VIOLATE OMEGA'S WARRANTY. THIS DETAIL IS SUBJECT TO CHANGE WITHOUT NOTICE. CONTACT OMEGA TO INSURE YOU HAVE THE MOST RECENT VERSION.



CORPORATE OFFICE
 1681 CALIFORNIA AVE., CORONA, CA 92881
 E-MAIL: INFO@OMEGA-PRODUCTS.COM
 WEBSITE: WWW.OMEGA-PRODUCTS.COM

AKROFLEX BARRIER EIFS DETAIL

TYPICAL SOFFIT VENT DETAIL

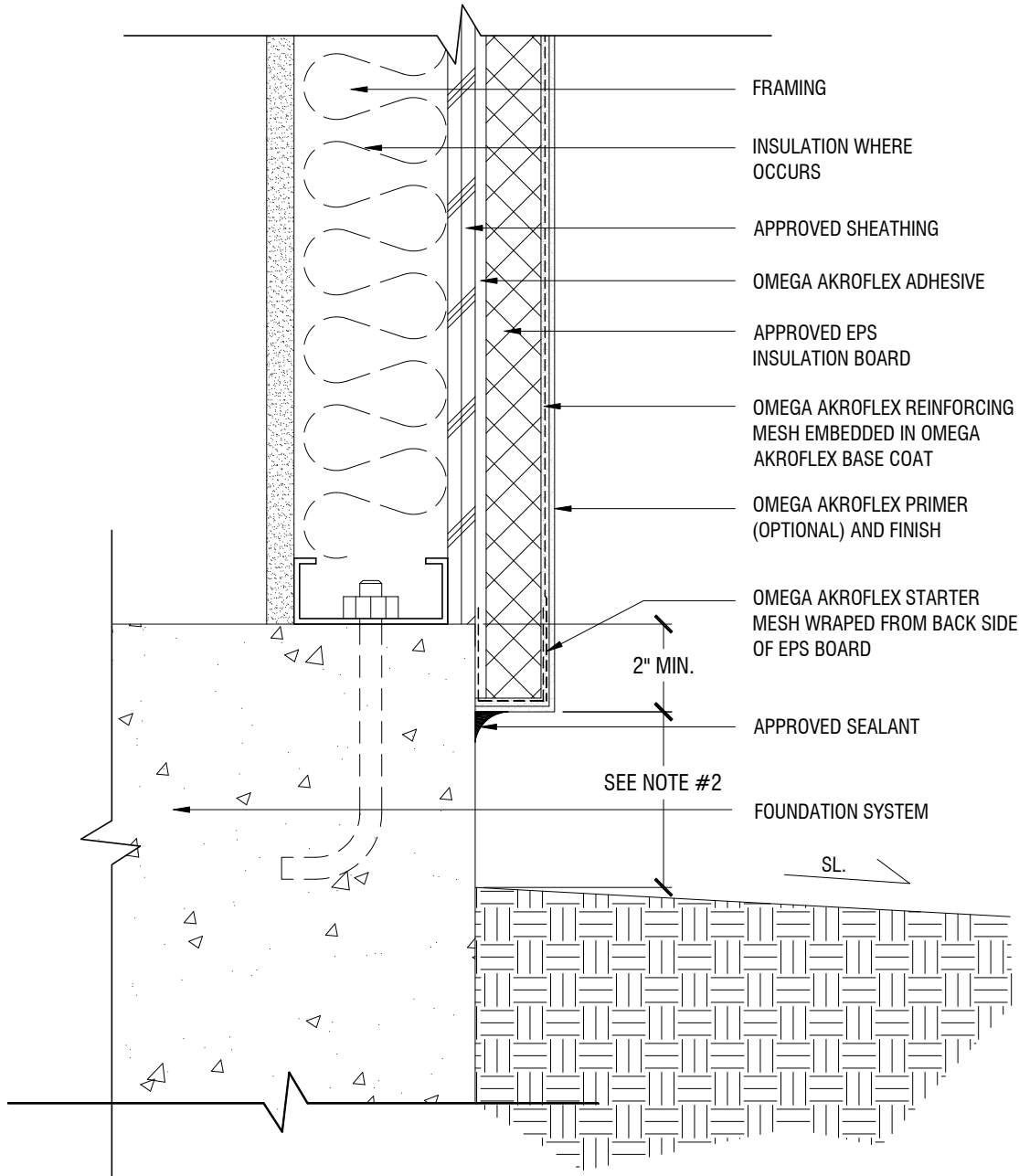
SCALE: 3"=1'-0"

DRAWING NO.: APB 09.00

DRAWN: JUNE 2009

NOTES

1. OPTIONAL VINYL ACCESSORY MAY BE USED
2. 8" MIN. ABOVE GRADE, 6" MIN. ABOVE PAVED SURFACES/HARDSCAPE, OR AS SPECIFIED BY LOCAL CODE



THE ARCHITECTURE, ENGINEERING, AND DESIGN OF THE PROJECT USING OMEGA PRODUCTS IS THE RESPONSIBILITY OF THE PROJECT'S DESIGN PROFESSIONAL. ALL SYSTEMS MUST COMPLY WITH LOCAL BUILDING CODES AND STANDARDS. THIS DETAIL IS FOR GENERAL INFORMATION AND GUIDANCE ONLY, AND OMEGA INC. SPECIFICALLY DISCLAIMS ANY LIABILITY FOR THE USE OF THIS DETAIL AND FOR THE ARCHITECTURE, DESIGN, ENGINEERING, OR WORKMANSHIP OF ANY PROJECT. THE PROJECT DESIGN PROFESSIONAL DETERMINES, IN ITS SOLE DISCRETION, WHETHER THIS DETAIL OR A FUNCTIONALLY EQUIVALENT ALTERNATIVE IS BEST SUITED FOR THE THE PROJECT. USE OF A FUNCTIONALLY EQUIVALENT DETAIL DOES NOT VIOLATE OMEGA'S WARRANTY. THIS DETAIL IS SUBJECT TO CHANGE WITHOUT NOTICE. CONTACT OMEGA TO INSURE YOU HAVE THE MOST RECENT VERSION.



CORPORATE OFFICE
1681 CALIFORNIA AVE., CORONA, CA 92881
E-MAIL: INFO@OMEGA-PRODUCTS.COM
WEBSITE: WWW.OMEGA-PRODUCTS.COM

AKROFLEX BARRIER EIFS DETAIL

TYPICAL TERMINATION AT FOUNDATION

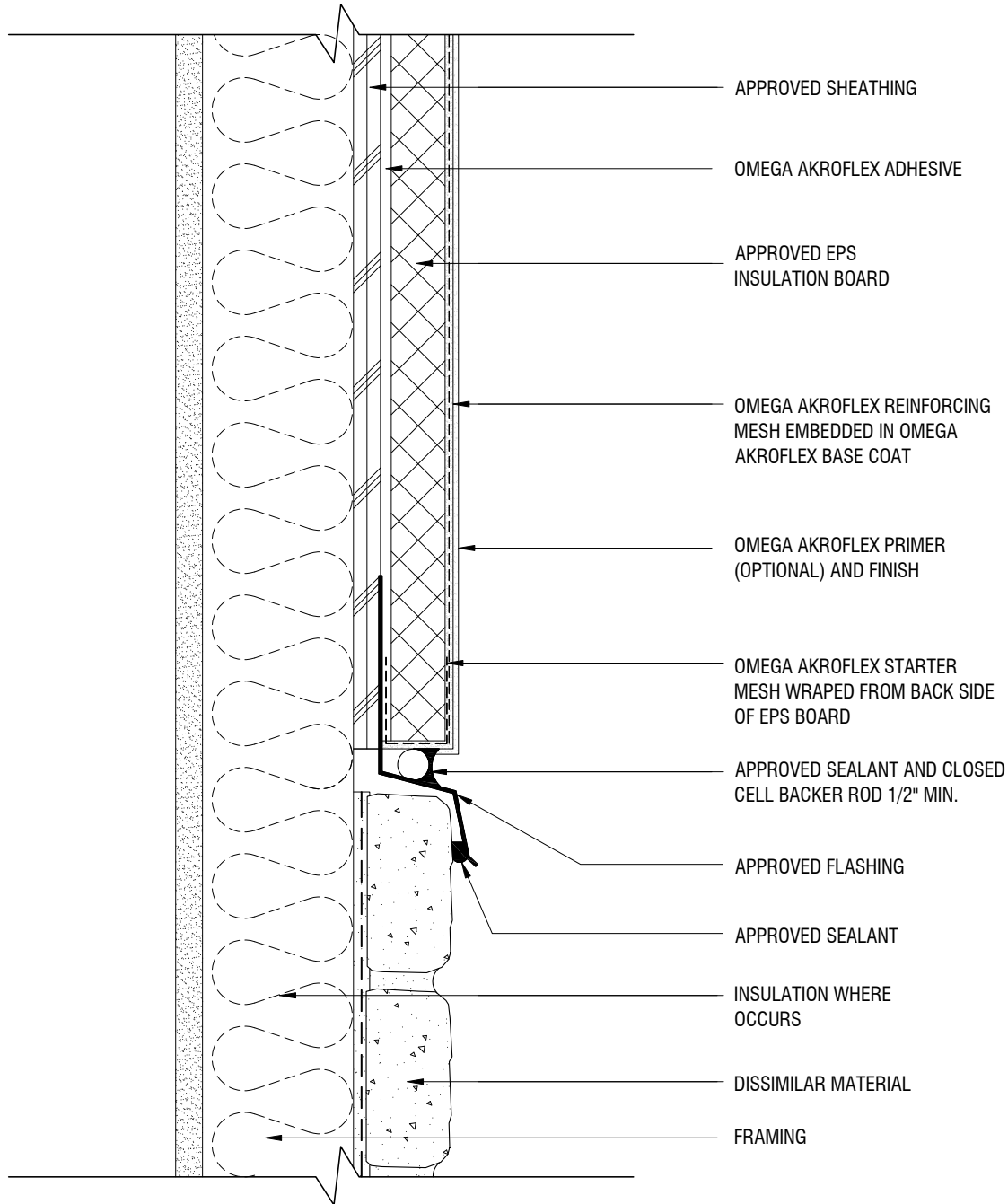
SCALE: 3"=1'-0"

DRAWING NO.: APB 10.00

DRAWN: JUNE 2009

NOTES

1. OPTIONAL VINYL ACCESSORY MAY BE USED



APPROVED SHEATHING

OMEGA AKROFLEX ADHESIVE

APPROVED EPS
INSULATION BOARD

OMEGA AKROFLEX REINFORCING
MESH EMBEDDED IN OMEGA
AKROFLEX BASE COAT

OMEGA AKROFLEX PRIMER
(OPTIONAL) AND FINISH

OMEGA AKROFLEX STARTER
MESH WRAPPED FROM BACK SIDE
OF EPS BOARD

APPROVED SEALANT AND CLOSED
CELL BACKER ROD 1/2" MIN.

APPROVED FLASHING

APPROVED SEALANT

INSULATION WHERE
OCCURS

DISSIMILAR MATERIAL

FRAMING

THE ARCHITECTURE, ENGINEERING, AND DESIGN OF THE PROJECT USING OMEGA PRODUCTS IS THE RESPONSIBILITY OF THE PROJECT'S DESIGN PROFESSIONAL. ALL SYSTEMS MUST COMPLY WITH LOCAL BUILDING CODES AND STANDARDS. THIS DETAIL IS FOR GENERAL INFORMATION AND GUIDANCE ONLY, AND OMEGA INC. SPECIFICALLY DISCLAIMS ANY LIABILITY FOR THE USE OF THIS DETAIL AND FOR THE ARCHITECTURE, DESIGN, ENGINEERING, OR WORKMANSHIP OF ANY PROJECT. THE PROJECT DESIGN PROFESSIONAL DETERMINES, IN ITS SOLE DISCRETION, WHETHER THIS DETAIL OR A FUNCTIONALLY EQUIVALENT ALTERNATIVE IS BEST SUITED FOR THE THE PROJECT. USE OF A FUNCTIONALLY EQUIVALENT DETAIL DOES NOT VIOLATE OMEGA'S WARRANTY. THIS DETAIL IS SUBJECT TO CHANGE WITHOUT NOTICE. CONTACT OMEGA TO INSURE YOU HAVE THE MOST RECENT VERSION.



CORPORATE OFFICE
1681 CALIFORNIA AVE., CORONA, CA 92881
E-MAIL: INFO@OMEGA-PRODUCTS.COM
WEBSITE: WWW.OMEGA-PRODUCTS.COM

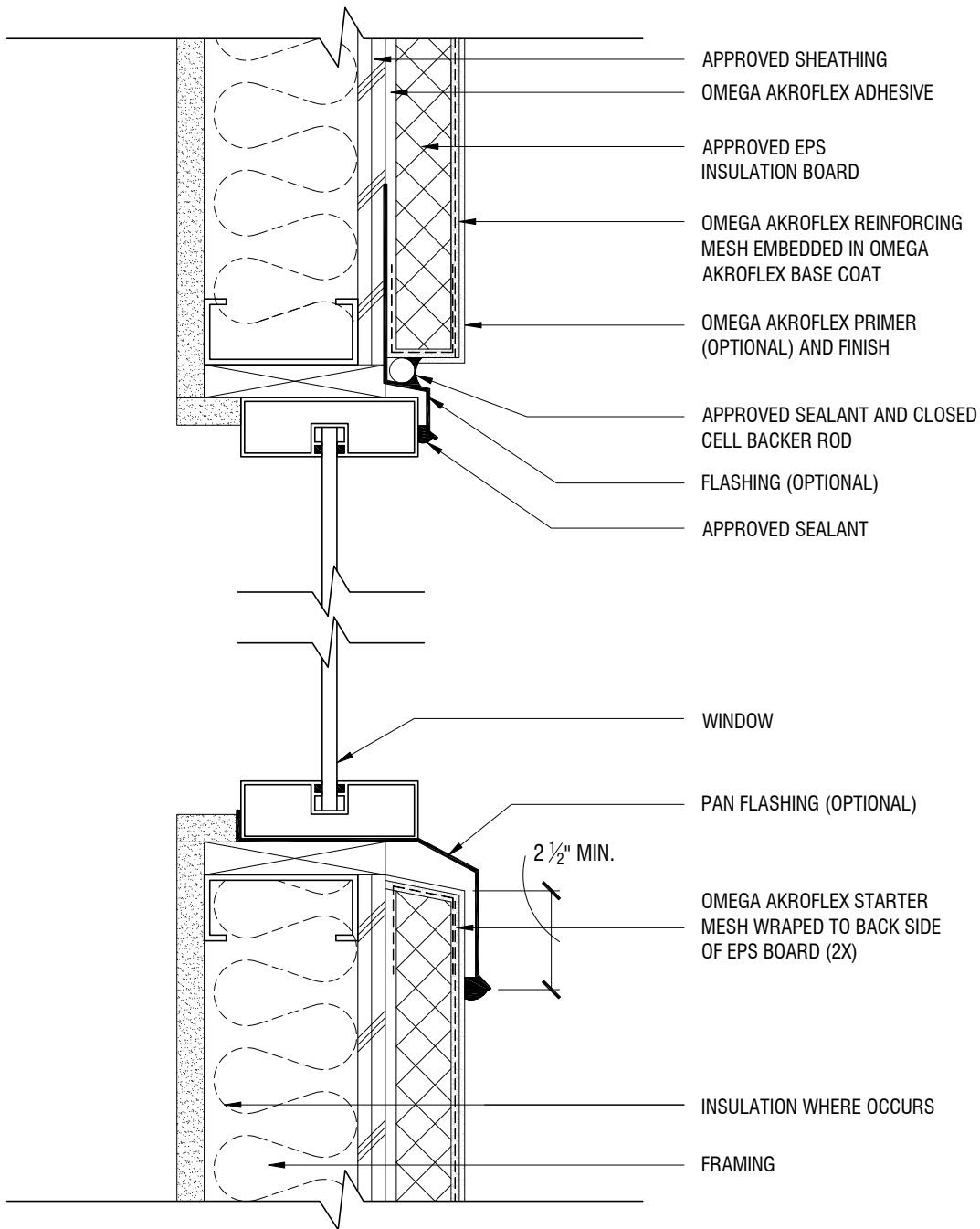
AKROFLEX BARRIER EIFS DETAIL

TYPICAL TERMINATION AT DISSIMILAR MATERIALS

SCALE: 3"=1'-0"

DRAWING NO.: APB 11.00

DRAWN: JUNE 2009



THE ARCHITECTURE, ENGINEERING, AND DESIGN OF THE PROJECT USING OMEGA PRODUCTS IS THE RESPONSIBILITY OF THE PROJECT'S DESIGN PROFESSIONAL. ALL SYSTEMS MUST COMPLY WITH LOCAL BUILDING CODES AND STANDARDS. THIS DETAIL IS FOR GENERAL INFORMATION AND GUIDANCE ONLY, AND OMEGA INC. SPECIFICALLY DISCLAIMS ANY LIABILITY FOR THE USE OF THIS DETAIL AND FOR THE ARCHITECTURE, DESIGN, ENGINEERING, OR WORKMANSHIP OF ANY PROJECT. THE PROJECT DESIGN PROFESSIONAL DETERMINES, IN ITS SOLE DISCRETION, WHETHER THIS DETAIL OR A FUNCTIONALLY EQUIVALENT ALTERNATIVE IS BEST SUITED FOR THE THE PROJECT. USE OF A FUNCTIONALLY EQUIVALENT DETAIL DOES NOT VIOLATE OMEGA'S WARRANTY. THIS DETAIL IS SUBJECT TO CHANGE WITHOUT NOTICE. CONTACT OMEGA TO INSURE YOU HAVE THE MOST RECENT VERSION.



CORPORATE OFFICE
 1681 CALIFORNIA AVE., CORONA, CA 92881
 E-MAIL: INFO@OMEGA-PRODUCTS.COM
 WEBSITE: WWW.OMEGA-PRODUCTS.COM

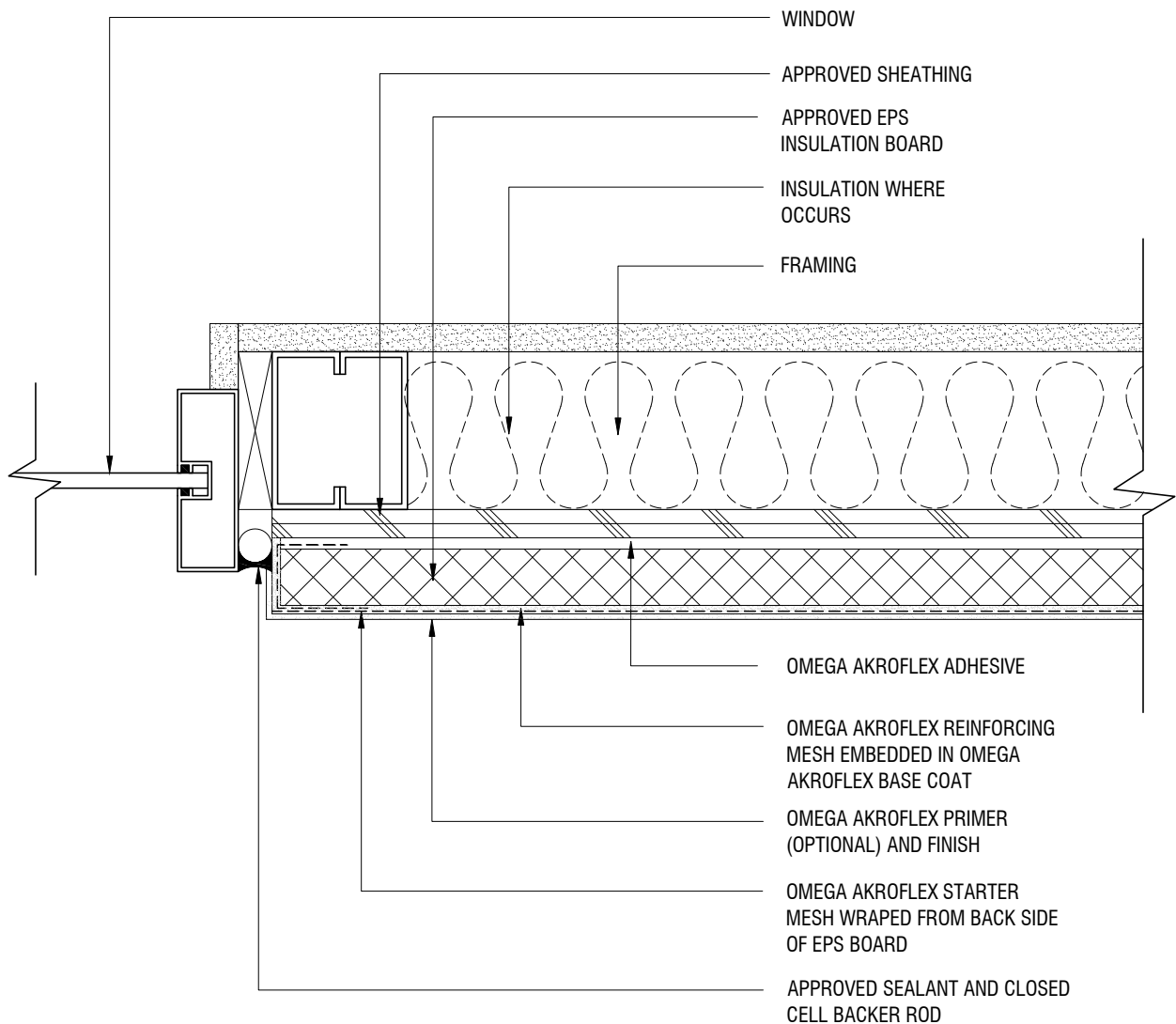
AKROFLEX BARRIER EIFS DETAIL

TYPICAL TERMINATION AT WINDOW HEAD AND SILL

SCALE: 3"=1'-0"

DRAWING NO.: APB 12.00

DRAWN: FEBRUARY 2013



THE ARCHITECTURE, ENGINEERING, AND DESIGN OF THE PROJECT USING OMEGA PRODUCTS IS THE RESPONSIBILITY OF THE PROJECT'S DESIGN PROFESSIONAL. ALL SYSTEMS MUST COMPLY WITH LOCAL BUILDING CODES AND STANDARDS. THIS DETAIL IS FOR GENERAL INFORMATION AND GUIDANCE ONLY, AND OMEGA INC. SPECIFICALLY DISCLAIMS ANY LIABILITY FOR THE USE OF THIS DETAIL AND FOR THE ARCHITECTURE, DESIGN, ENGINEERING, OR WORKMANSHIP OF ANY PROJECT. THE PROJECT DESIGN PROFESSIONAL DETERMINES, IN ITS SOLE DISCRETION, WHETHER THIS DETAIL OR A FUNCTIONALLY EQUIVALENT ALTERNATIVE IS BEST SUITED FOR THE THE PROJECT. USE OF A FUNCTIONALLY EQUIVALENT DETAIL DOES NOT VIOLATE OMEGA'S WARRANTY. THIS DETAIL IS SUBJECT TO CHANGE WITHOUT NOTICE. CONTACT OMEGA TO INSURE YOU HAVE THE MOST RECENT VERSION.



CORPORATE OFFICE
 1681 CALIFORNIA AVE., CORONA, CA 92881
 E-MAIL: INFO@OMEGA-PRODUCTS.COM
 WEBSITE: WWW.OMEGA-PRODUCTS.COM

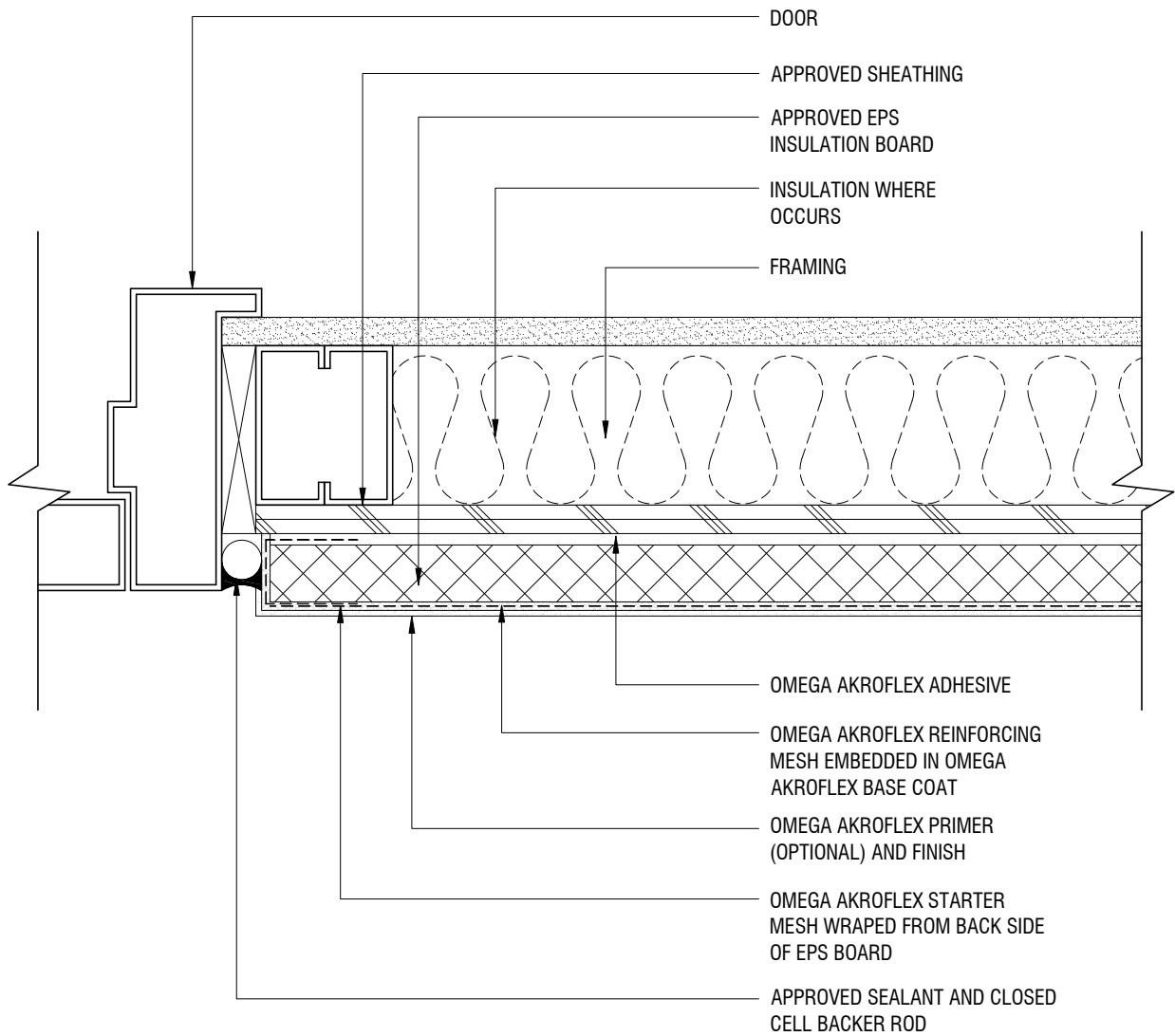
AKROFLEX BARRIER EIFS DETAIL

TYPICAL TERMINATION AT WINDOW JAMB

SCALE: 3"=1'-0"

DRAWING NO.: APB 13.00

DRAWN: JUNE 2009



THE ARCHITECTURE, ENGINEERING, AND DESIGN OF THE PROJECT USING OMEGA PRODUCTS IS THE RESPONSIBILITY OF THE PROJECT'S DESIGN PROFESSIONAL. ALL SYSTEMS MUST COMPLY WITH LOCAL BUILDING CODES AND STANDARDS. THIS DETAIL IS FOR GENERAL INFORMATION AND GUIDANCE ONLY, AND OMEGA INC. SPECIFICALLY DISCLAIMS ANY LIABILITY FOR THE USE OF THIS DETAIL AND FOR THE ARCHITECTURE, DESIGN, ENGINEERING, OR WORKMANSHIP OF ANY PROJECT. THE PROJECT DESIGN PROFESSIONAL DETERMINES, IN ITS SOLE DISCRETION, WHETHER THIS DETAIL OR A FUNCTIONALLY EQUIVALENT ALTERNATIVE IS BEST SUITED FOR THE THE PROJECT. USE OF A FUNCTIONALLY EQUIVALENT DETAIL DOES NOT VIOLATE OMEGA'S WARRANTY. THIS DETAIL IS SUBJECT TO CHANGE WITHOUT NOTICE. CONTACT OMEGA TO INSURE YOU HAVE THE MOST RECENT VERSION.



CORPORATE OFFICE
 1681 CALIFORNIA AVE., CORONA, CA 92881
 E-MAIL: INFO@OMEGA-PRODUCTS.COM
 WEBSITE: WWW.OMEGA-PRODUCTS.COM

AKROFLEX BARRIER EIFS DETAIL

TYPICAL TERMINATION AT DOOR JAMB

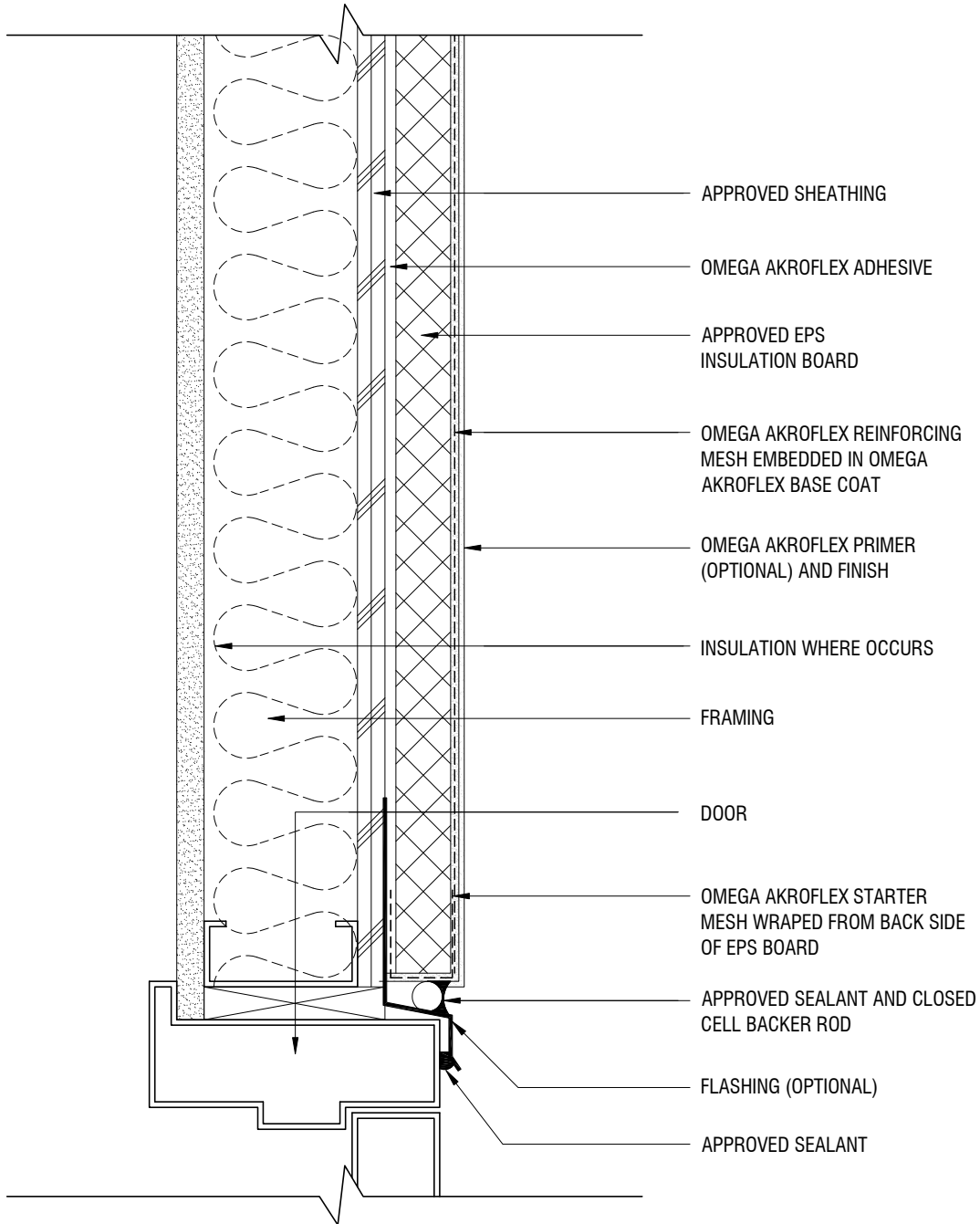
SCALE: 3"=1'-0"

DRAWING NO.: APB 14.00

DRAWN: JUNE 2009

NOTES

1. OPTIONAL VINYL ACCESSORY MAY BE USED



THE ARCHITECTURE, ENGINEERING, AND DESIGN OF THE PROJECT USING OMEGA PRODUCTS IS THE RESPONSIBILITY OF THE PROJECT'S DESIGN PROFESSIONAL. ALL SYSTEMS MUST COMPLY WITH LOCAL BUILDING CODES AND STANDARDS. THIS DETAIL IS FOR GENERAL INFORMATION AND GUIDANCE ONLY, AND OMEGA INC. SPECIFICALLY DISCLAIMS ANY LIABILITY FOR THE USE OF THIS DETAIL AND FOR THE ARCHITECTURE, DESIGN, ENGINEERING, OR WORKMANSHIP OF ANY PROJECT. THE PROJECT DESIGN PROFESSIONAL DETERMINES, IN ITS SOLE DISCRETION, WHETHER THIS DETAIL OR A FUNCTIONALLY EQUIVALENT ALTERNATIVE IS BEST SUITED FOR THE THE PROJECT. USE OF A FUNCTIONALLY EQUIVALENT DETAIL DOES NOT VIOLATE OMEGA'S WARRANTY. THIS DETAIL IS SUBJECT TO CHANGE WITHOUT NOTICE. CONTACT OMEGA TO INSURE YOU HAVE THE MOST RECENT VERSION.



CORPORATE OFFICE
 1681 CALIFORNIA AVE., CORONA, CA 92881
 E-MAIL: INFO@OMEGA-PRODUCTS.COM
 WEBSITE: WWW.OMEGA-PRODUCTS.COM

**AKROFLEX BARRIER
 EIFS DETAIL**

**TYPICAL TERMINATION AT
 DOOR HEAD**

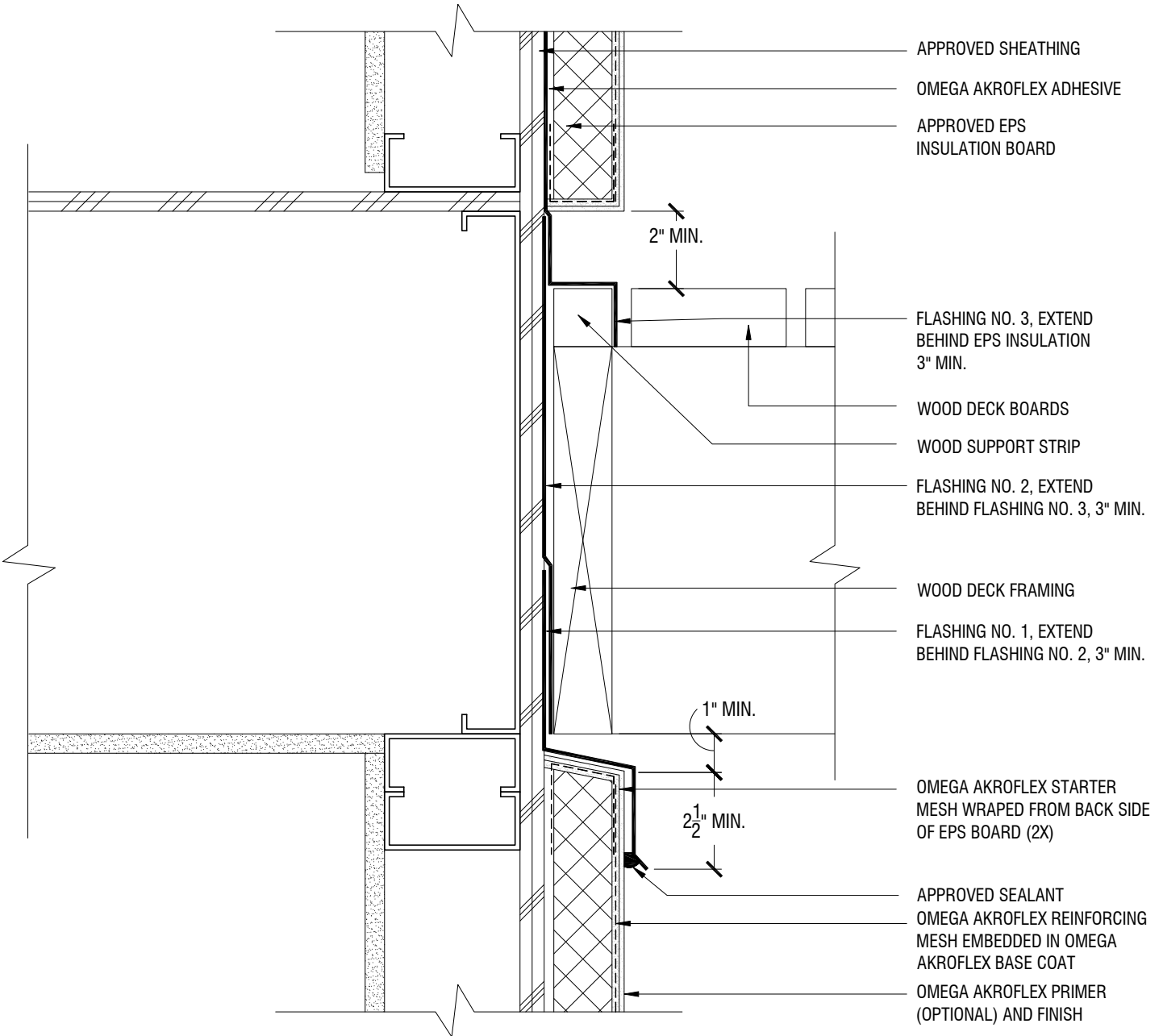
SCALE: 3"=1'-0"

DRAWING NO.: APB 15.00

DRAWN: FEBRUARY 2013

NOTES

1. OPTIONAL VINYL ACCESSORY MAY BE USED



APPROVED SHEATHING
 OMEGA AKROFLEX ADHESIVE
 APPROVED EPS INSULATION BOARD

FLASHING NO. 3, EXTEND BEHIND EPS INSULATION 3" MIN.

WOOD DECK BOARDS
 WOOD SUPPORT STRIP

FLASHING NO. 2, EXTEND BEHIND FLASHING NO. 3, 3" MIN.

WOOD DECK FRAMING

FLASHING NO. 1, EXTEND BEHIND FLASHING NO. 2, 3" MIN.

OMEGA AKROFLEX STARTER MESH WRAPPED FROM BACK SIDE OF EPS BOARD (2X)

APPROVED SEALANT
 OMEGA AKROFLEX REINFORCING MESH EMBEDDED IN OMEGA AKROFLEX BASE COAT
 OMEGA AKROFLEX PRIMER (OPTIONAL) AND FINISH

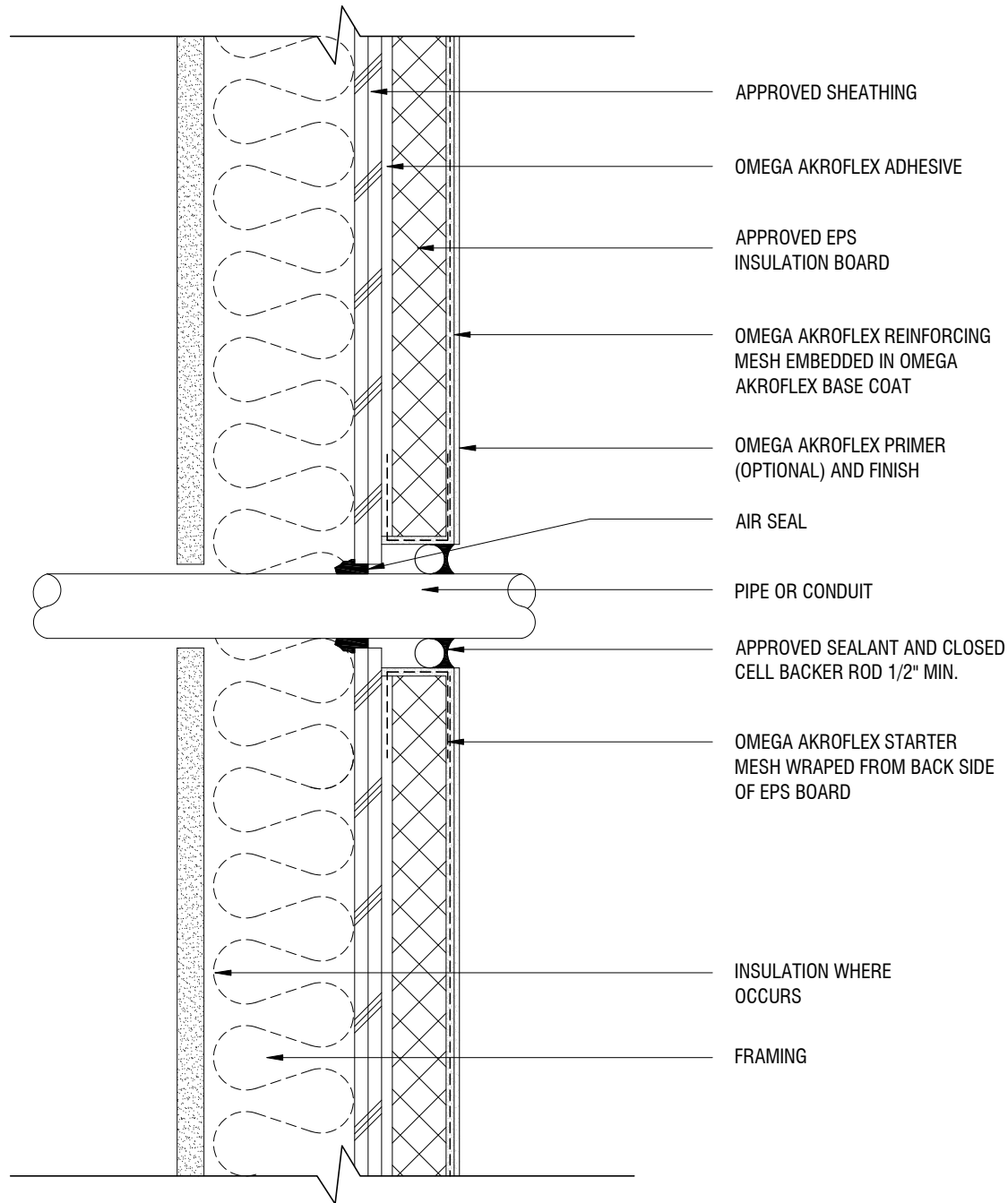
THE ARCHITECTURE, ENGINEERING, AND DESIGN OF THE PROJECT USING OMEGA PRODUCTS IS THE RESPONSIBILITY OF THE PROJECT'S DESIGN PROFESSIONAL. ALL SYSTEMS MUST COMPLY WITH LOCAL BUILDING CODES AND STANDARDS. THIS DETAIL IS FOR GENERAL INFORMATION AND GUIDANCE ONLY, AND OMEGA INC. SPECIFICALLY DISCLAIMS ANY LIABILITY FOR THE USE OF THIS DETAIL AND FOR THE ARCHITECTURE, DESIGN, ENGINEERING, OR WORKMANSHIP OF ANY PROJECT. THE PROJECT DESIGN PROFESSIONAL DETERMINES, IN ITS SOLE DISCRETION, WHETHER THIS DETAIL OR A FUNCTIONALLY EQUIVALENT ALTERNATIVE IS BEST SUITED FOR THE THE PROJECT. USE OF A FUNCTIONALLY EQUIVALENT DETAIL DOES NOT VIOLATE OMEGA'S WARRANTY. THIS DETAIL IS SUBJECT TO CHANGE WITHOUT NOTICE. CONTACT OMEGA TO INSURE YOU HAVE THE MOST RECENT VERSION.



CORPORATE OFFICE
 1681 CALIFORNIA AVE., CORONA, CA 92881
 E-MAIL: INFO@OMEGA-PRODUCTS.COM
 WEBSITE: WWW.OMEGA-PRODUCTS.COM

**AKROFLEX BARRIER
 EIFS DETAIL**

TYPICAL TERMINATION AT DECK



APPROVED SHEATHING

OMEGA AKROFLEX ADHESIVE

APPROVED EPS
INSULATION BOARD

OMEGA AKROFLEX REINFORCING
MESH EMBEDDED IN OMEGA
AKROFLEX BASE COAT

OMEGA AKROFLEX PRIMER
(OPTIONAL) AND FINISH

AIR SEAL

PIPE OR CONDUIT

APPROVED SEALANT AND CLOSED
CELL BACKER ROD 1/2" MIN.

OMEGA AKROFLEX STARTER
MESH WRAPED FROM BACK SIDE
OF EPS BOARD

INSULATION WHERE
OCCURS

FRAMING

THE ARCHITECTURE, ENGINEERING, AND DESIGN OF THE PROJECT USING OMEGA PRODUCTS IS THE RESPONSIBILITY OF THE PROJECT'S DESIGN PROFESSIONAL. ALL SYSTEMS MUST COMPLY WITH LOCAL BUILDING CODES AND STANDARDS. THIS DETAIL IS FOR GENERAL INFORMATION AND GUIDANCE ONLY, AND OMEGA INC. SPECIFICALLY DISCLAIMS ANY LIABILITY FOR THE USE OF THIS DETAIL AND FOR THE ARCHITECTURE, DESIGN, ENGINEERING, OR WORKMANSHIP OF ANY PROJECT. THE PROJECT DESIGN PROFESSIONAL DETERMINES, IN ITS SOLE DISCRETION, WHETHER THIS DETAIL OR A FUNCTIONALLY EQUIVALENT ALTERNATIVE IS BEST SUITED FOR THE THE PROJECT. USE OF A FUNCTIONALLY EQUIVALENT DETAIL DOES NOT VIOLATE OMEGA'S WARRANTY. THIS DETAIL IS SUBJECT TO CHANGE WITHOUT NOTICE. CONTACT OMEGA TO INSURE YOU HAVE THE MOST RECENT VERSION.



CORPORATE OFFICE
1681 CALIFORNIA AVE., CORONA, CA 92881
E-MAIL: INFO@OMEGA-PRODUCTS.COM
WEBSITE: WWW.OMEGA-PRODUCTS.COM

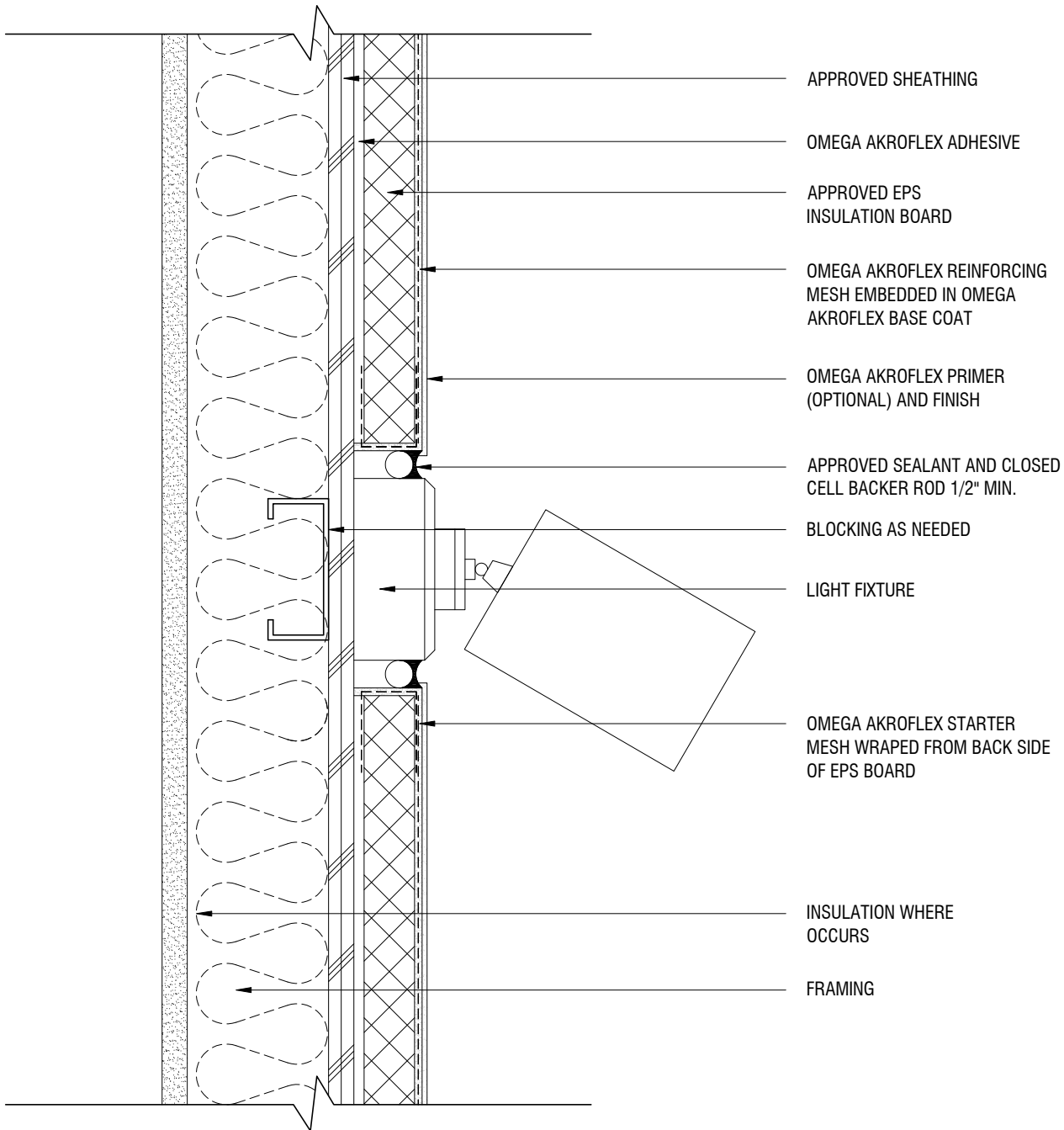
AKROFLEX BARRIER EIFS DETAIL

TYPICAL PIPE OR CONDUIT PENETRATION

SCALE: 3"=1'-0"

DRAWING NO.: APB 17.00

DRAWN: JUNE 2009



- APPROVED SHEATHING
- OMEGA AKROFLEX ADHESIVE
- APPROVED EPS INSULATION BOARD
- OMEGA AKROFLEX REINFORCING MESH EMBEDDED IN OMEGA AKROFLEX BASE COAT
- OMEGA AKROFLEX PRIMER (OPTIONAL) AND FINISH
- APPROVED SEALANT AND CLOSED CELL BACKER ROD 1/2" MIN.
- BLOCKING AS NEEDED
- LIGHT FIXTURE
- OMEGA AKROFLEX STARTER MESH WRAPED FROM BACK SIDE OF EPS BOARD
- INSULATION WHERE OCCURS
- FRAMING

THE ARCHITECTURE, ENGINEERING, AND DESIGN OF THE PROJECT USING OMEGA PRODUCTS IS THE RESPONSIBILITY OF THE PROJECT'S DESIGN PROFESSIONAL. ALL SYSTEMS MUST COMPLY WITH LOCAL BUILDING CODES AND STANDARDS. THIS DETAIL IS FOR GENERAL INFORMATION AND GUIDANCE ONLY, AND OMEGA INC. SPECIFICALLY DISCLAIMS ANY LIABILITY FOR THE USE OF THIS DETAIL AND FOR THE ARCHITECTURE, DESIGN, ENGINEERING, OR WORKMANSHIP OF ANY PROJECT. THE PROJECT DESIGN PROFESSIONAL DETERMINES, IN ITS SOLE DISCRETION, WHETHER THIS DETAIL OR A FUNCTIONALLY EQUIVALENT ALTERNATIVE IS BEST SUITED FOR THE THE PROJECT. USE OF A FUNCTIONALLY EQUIVALENT DETAIL DOES NOT VIOLATE OMEGA'S WARRANTY. THIS DETAIL IS SUBJECT TO CHANGE WITHOUT NOTICE. CONTACT OMEGA TO INSURE YOU HAVE THE MOST RECENT VERSION.



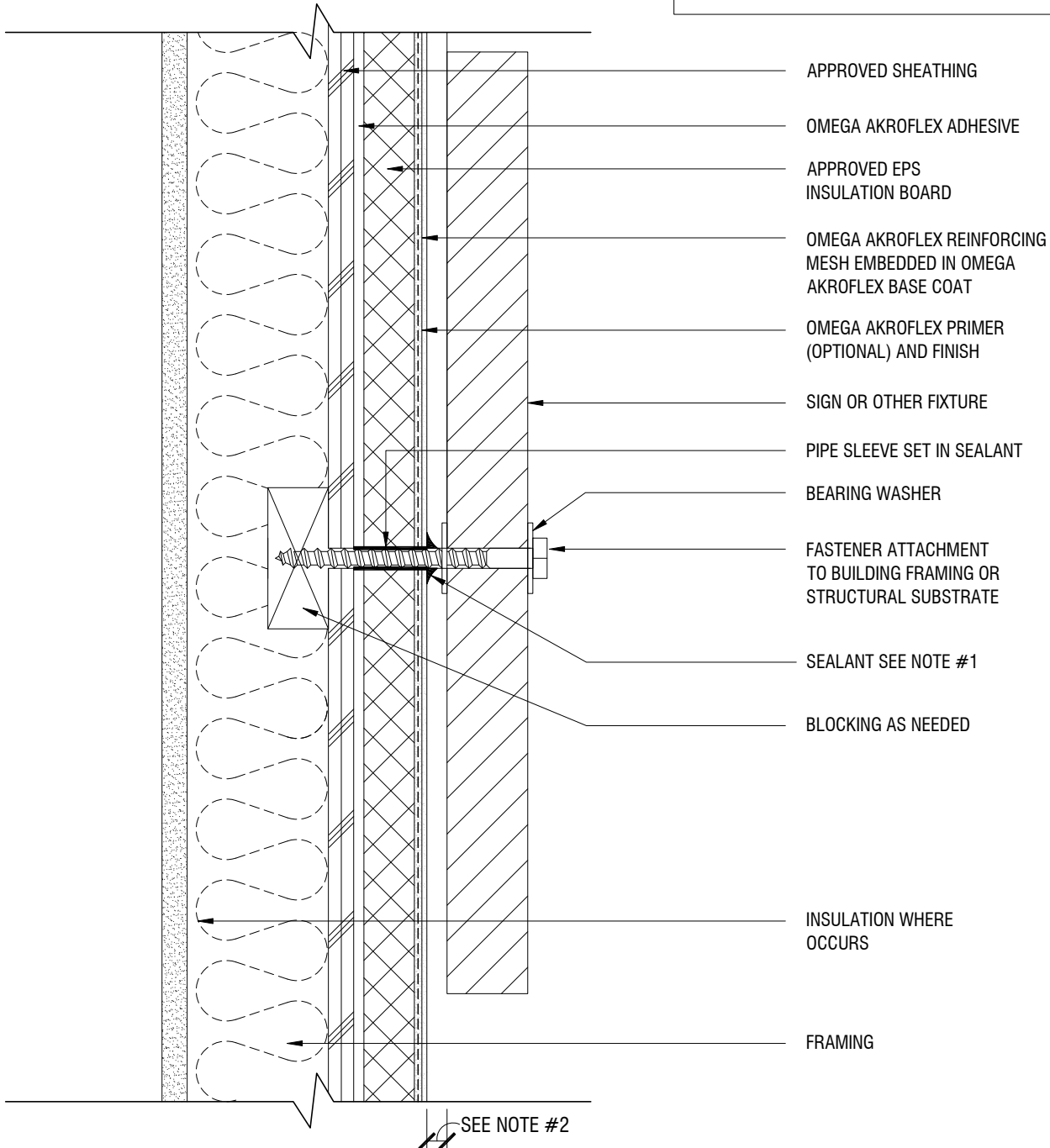
CORPORATE OFFICE
 1681 CALIFORNIA AVE., CORONA, CA 92881
 E-MAIL: INFO@OMEGA-PRODUCTS.COM
 WEBSITE: WWW.OMEGA-PRODUCTS.COM

AKROFLEX BARRIER EIFS DETAIL

TYPICAL LIGHT PENETRATION

NOTES

1. PERIMETER OF PIPE SLEEVE IS CAULKED TO PREVENT WATER ENTRY INTO WALL
2. SIGNS AND OTHER ATTACHMENTS THAT ARE NOT SEALED TO PREVENT WATER INTRUSION SHOULD BE GAPPED A MIN. OF 1/2" FROM FINISH SURFACE



THE ARCHITECTURE, ENGINEERING, AND DESIGN OF THE PROJECT USING OMEGA PRODUCTS IS THE RESPONSIBILITY OF THE PROJECT'S DESIGN PROFESSIONAL. ALL SYSTEMS MUST COMPLY WITH LOCAL BUILDING CODES AND STANDARDS. THIS DETAIL IS FOR GENERAL INFORMATION AND GUIDANCE ONLY, AND OMEGA INC. SPECIFICALLY DISCLAIMS ANY LIABILITY FOR THE USE OF THIS DETAIL AND FOR THE ARCHITECTURE, DESIGN, ENGINEERING, OR WORKMANSHIP OF ANY PROJECT. THE PROJECT DESIGN PROFESSIONAL DETERMINES, IN ITS SOLE DISCRETION, WHETHER THIS DETAIL OR A FUNCTIONALLY EQUIVALENT ALTERNATIVE IS BEST SUITED FOR THE THE PROJECT. USE OF A FUNCTIONALLY EQUIVALENT DETAIL DOES NOT VIOLATE OMEGA'S WARRANTY. THIS DETAIL IS SUBJECT TO CHANGE WITHOUT NOTICE. CONTACT OMEGA TO INSURE YOU HAVE THE MOST RECENT VERSION.



CORPORATE OFFICE
1681 CALIFORNIA AVE., CORONA, CA 92881
E-MAIL: INFO@OMEGA-PRODUCTS.COM
WEBSITE: WWW.OMEGA-PRODUCTS.COM

AKROFLEX BARRIER EIFS DETAIL

TYPICAL ATTACHMENT

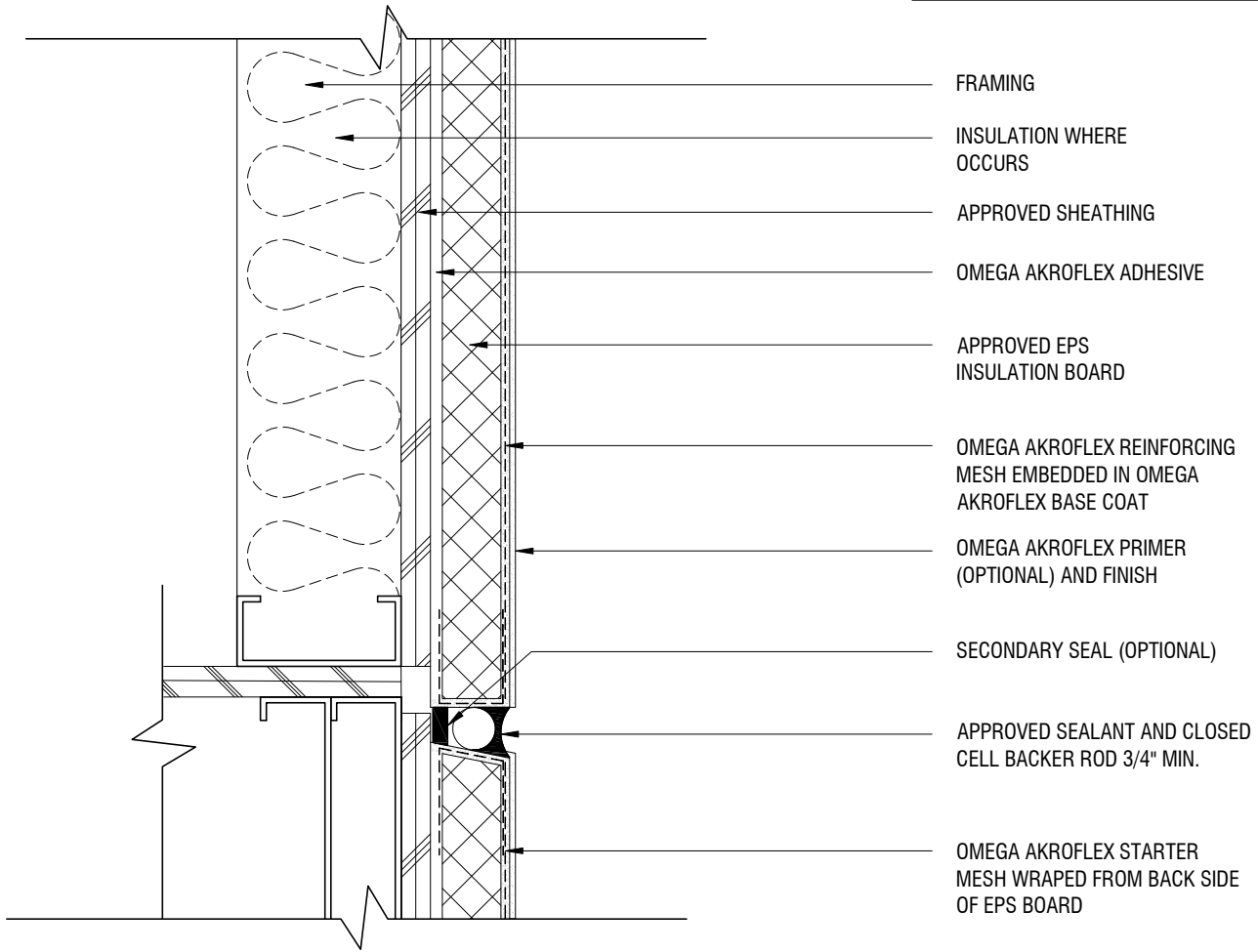
SCALE: 3"=1'-0"

DRAWING NO.: APB 19.00

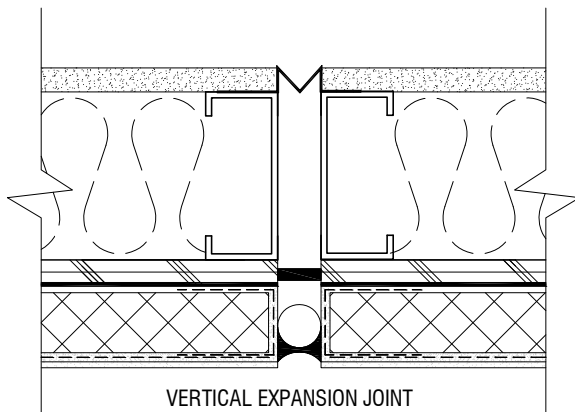
DRAWN: JUNE 2009

NOTES

1. SEALANT MUST BE WITHIN 2" OF BREAK IN SHEATHING



EXPANSION JOINT AT FLOOR LINE



VERTICAL EXPANSION JOINT

THE ARCHITECTURE, ENGINEERING, AND DESIGN OF THE PROJECT USING OMEGA PRODUCTS IS THE RESPONSIBILITY OF THE PROJECT'S DESIGN PROFESSIONAL. ALL SYSTEMS MUST COMPLY WITH LOCAL BUILDING CODES AND STANDARDS. THIS DETAIL IS FOR GENERAL INFORMATION AND GUIDANCE ONLY, AND OMEGA INC. SPECIFICALLY DISCLAIMS ANY LIABILITY FOR THE USE OF THIS DETAIL AND FOR THE ARCHITECTURE, DESIGN, ENGINEERING, OR WORKMANSHIP OF ANY PROJECT. THE PROJECT DESIGN PROFESSIONAL DETERMINES, IN ITS SOLE DISCRETION, WHETHER THIS DETAIL OR A FUNCTIONALLY EQUIVALENT ALTERNATIVE IS BEST SUITED FOR THE THE PROJECT. USE OF A FUNCTIONALLY EQUIVALENT DETAIL DOES NOT VIOLATE OMEGA'S WARRANTY. THIS DETAIL IS SUBJECT TO CHANGE WITHOUT NOTICE. CONTACT OMEGA TO INSURE YOU HAVE THE MOST RECENT VERSION.



CORPORATE OFFICE
1681 CALIFORNIA AVE., CORONA, CA 92881
E-MAIL: INFO@OMEGA-PRODUCTS.COM
WEBSITE: WWW.OMEGA-PRODUCTS.COM

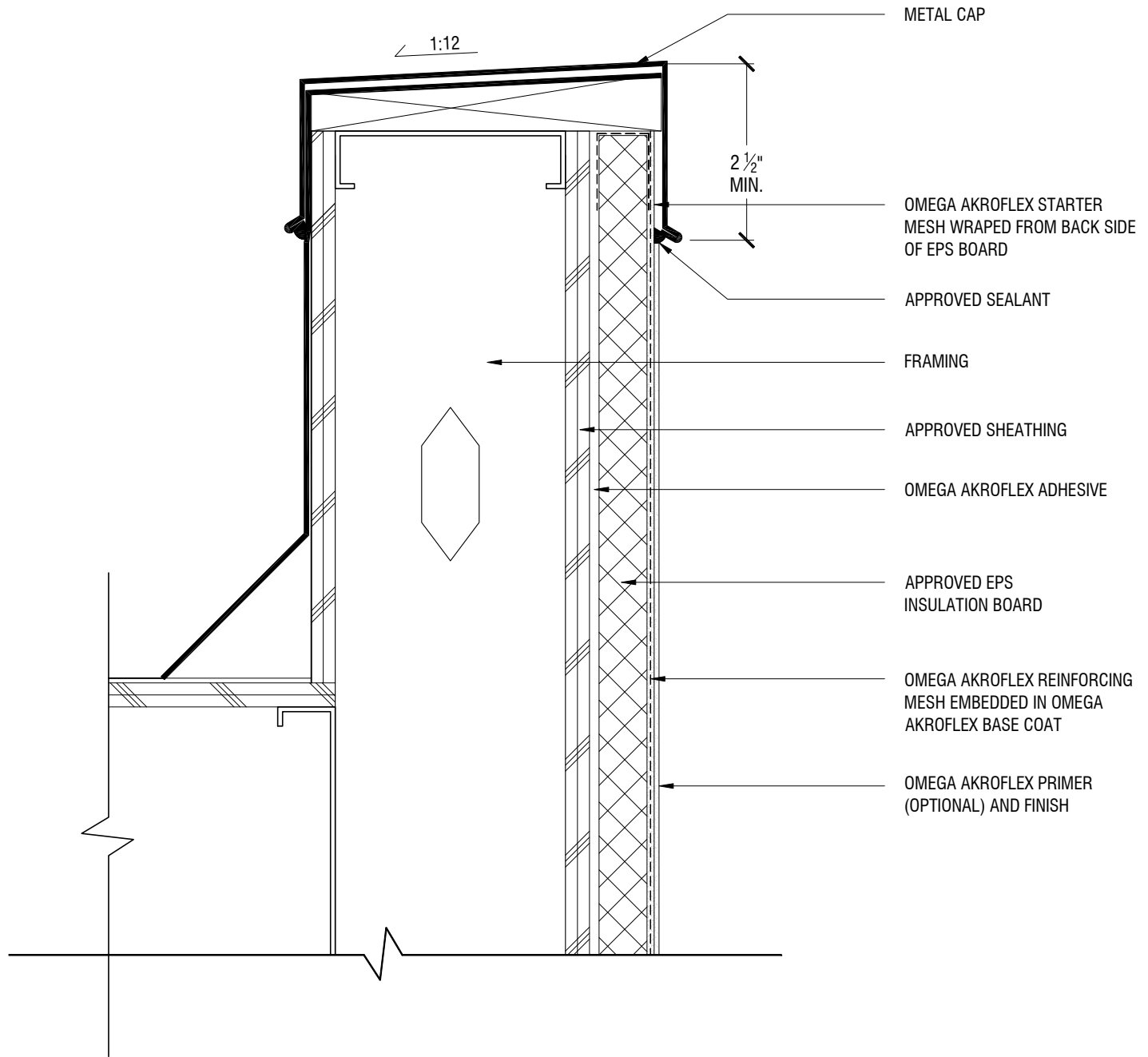
AKROFLEX BARRIER EIFS DETAIL

TYPICAL EXPANSION JOINTS

SCALE: 3"=1'-0"

DRAWING NO.: APB 20.00

DRAWN: JUNE 2009



THE ARCHITECTURE, ENGINEERING, AND DESIGN OF THE PROJECT USING OMEGA PRODUCTS IS THE RESPONSIBILITY OF THE PROJECT'S DESIGN PROFESSIONAL. ALL SYSTEMS MUST COMPLY WITH LOCAL BUILDING CODES AND STANDARDS. THIS DETAIL IS FOR GENERAL INFORMATION AND GUIDANCE ONLY, AND OMEGA INC. SPECIFICALLY DISCLAIMS ANY LIABILITY FOR THE USE OF THIS DETAIL AND FOR THE ARCHITECTURE, DESIGN, ENGINEERING, OR WORKMANSHIP OF ANY PROJECT. THE PROJECT DESIGN PROFESSIONAL DETERMINES, IN ITS SOLE DISCRETION, WHETHER THIS DETAIL OR A FUNCTIONALLY EQUIVALENT ALTERNATIVE IS BEST SUITED FOR THE THE PROJECT. USE OF A FUNCTIONALLY EQUIVALENT DETAIL DOES NOT VIOLATE OMEGA'S WARRANTY. THIS DETAIL IS SUBJECT TO CHANGE WITHOUT NOTICE. CONTACT OMEGA TO INSURE YOU HAVE THE MOST RECENT VERSION.



CORPORATE OFFICE
 1681 CALIFORNIA AVE., CORONA, CA 92881
 E-MAIL: INFO@OMEGA-PRODUCTS.COM
 WEBSITE: WWW.OMEGA-PRODUCTS.COM

AKROFLEX BARRIER EIFS DETAIL

TYPICAL PARAPET WITH METAL CAP

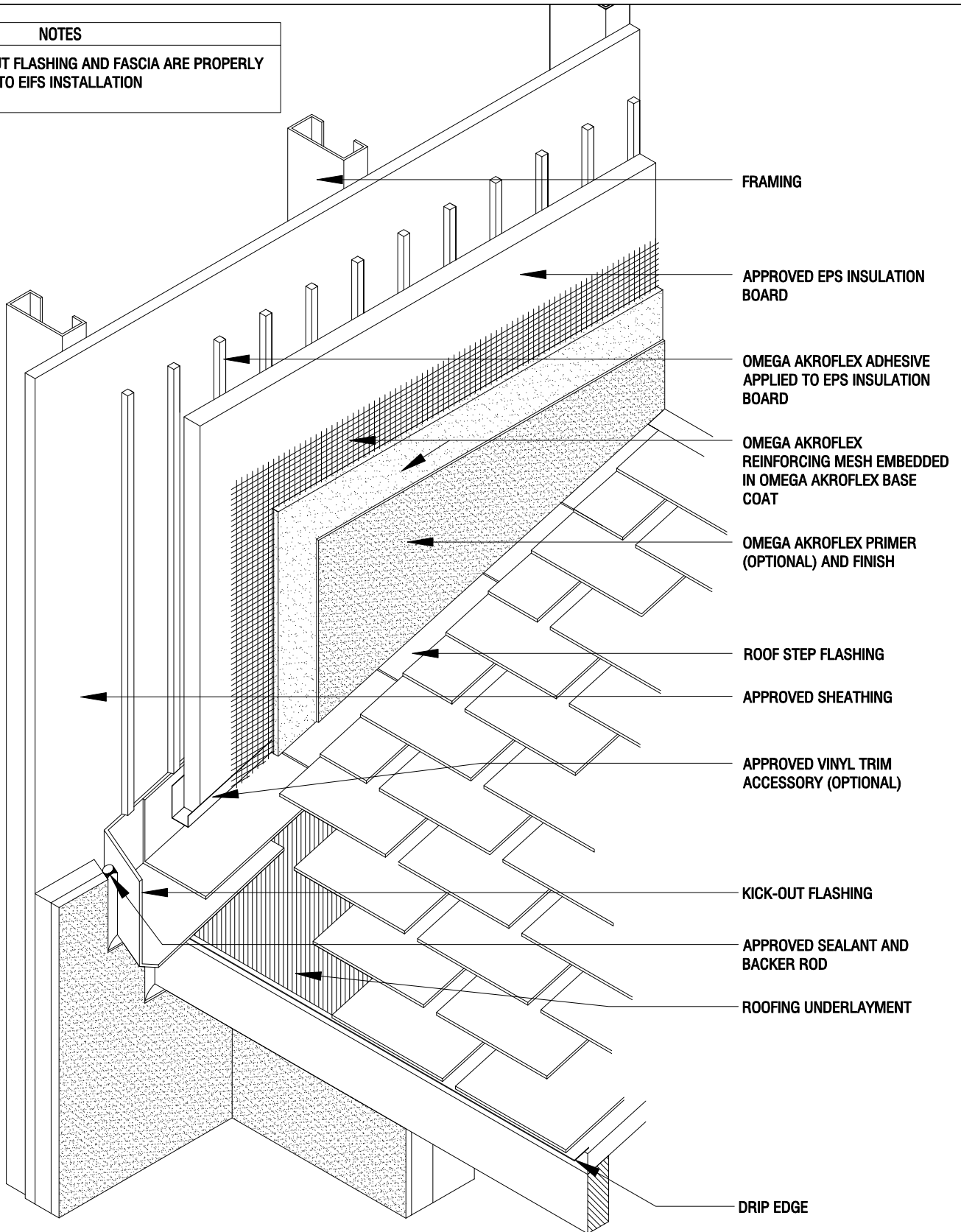
SCALE: 3"=1'-0"

DRAWING NO.: APB 21.00

DRAWN: JUNE 2009

NOTES

1. ENSURE KICK-OUT FLASHING AND FASCIA ARE PROPERLY FLASHED PRIOR TO EIFS INSTALLATION



THE ARCHITECTURE, ENGINEERING, AND DESIGN OF THE PROJECT USING OMEGA PRODUCTS IS THE RESPONSIBILITY OF THE PROJECT'S DESIGN PROFESSIONAL. ALL SYSTEMS MUST COMPLY WITH LOCAL BUILDING CODES AND STANDARDS. THIS DETAIL IS FOR GENERAL INFORMATION AND GUIDANCE ONLY, AND OMEGA INC. SPECIFICALLY DISCLAIMS ANY LIABILITY FOR THE USE OF THIS DETAIL AND FOR THE ARCHITECTURE, DESIGN, ENGINEERING, OR WORKMANSHIP OF ANY PROJECT. THE PROJECT DESIGN PROFESSIONAL DETERMINES, IN ITS SOLE DISCRETION, WHETHER THIS DETAIL OR A FUNCTIONALLY EQUIVALENT ALTERNATIVE IS BEST SUITED FOR THE THE PROJECT. USE OF A FUNCTIONALLY EQUIVALENT DETAIL DOES NOT VIOLATE OMEGA'S WARRANTY. THIS DETAIL IS SUBJECT TO CHANGE WITHOUT NOTICE. CONTACT OMEGA TO INSURE YOU HAVE THE MOST RECENT VERSION.



CORPORATE OFFICE
 1681 CALIFORNIA AVE., CORONA, CA 92881
 E-MAIL: INFO@OMEGA-PRODUCTS.COM
 WEBSITE: WWW.OMEGA-PRODUCTS.COM

**AKROFLEX BARRIER
 EIFS DETAIL**

**ROOF/WALL KICK-OUT FLASHING
 DETAIL**

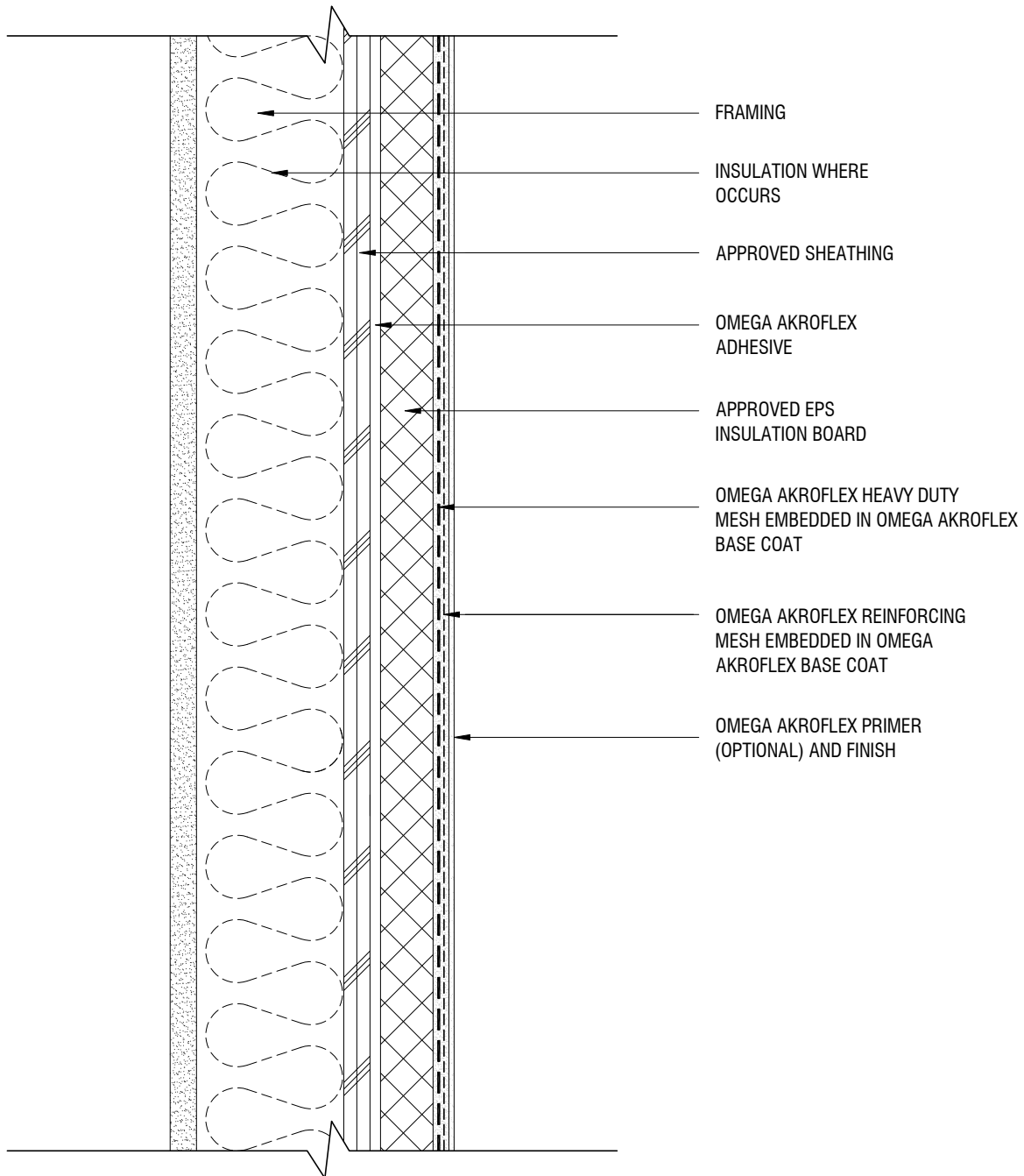
SCALE: 3"=1'-0"

DRAWING NO.: APB 22.00

DRAWN: JUNE 2009

NOTES

1. DO NOT LAP HEAVY DUTY MESH



THE ARCHITECTURE, ENGINEERING, AND DESIGN OF THE PROJECT USING OMEGA PRODUCTS IS THE RESPONSIBILITY OF THE PROJECT'S DESIGN PROFESSIONAL. ALL SYSTEMS MUST COMPLY WITH LOCAL BUILDING CODES AND STANDARDS. THIS DETAIL IS FOR GENERAL INFORMATION AND GUIDANCE ONLY, AND OMEGA INC. SPECIFICALLY DISCLAIMS ANY LIABILITY FOR THE USE OF THIS DETAIL AND FOR THE ARCHITECTURE, DESIGN, ENGINEERING, OR WORKMANSHIP OF ANY PROJECT. THE PROJECT DESIGN PROFESSIONAL DETERMINES, IN ITS SOLE DISCRETION, WHETHER THIS DETAIL OR A FUNCTIONALLY EQUIVALENT ALTERNATIVE IS BEST SUITED FOR THE THE PROJECT. USE OF A FUNCTIONALLY EQUIVALENT DETAIL DOES NOT VIOLATE OMEGA'S WARRANTY. THIS DETAIL IS SUBJECT TO CHANGE WITHOUT NOTICE. CONTACT OMEGA TO INSURE YOU HAVE THE MOST RECENT VERSION.



CORPORATE OFFICE
 1681 CALIFORNIA AVE., CORONA, CA 92881
 E-MAIL: INFO@OMEGA-PRODUCTS.COM
 WEBSITE: WWW.OMEGA-PRODUCTS.COM

**AKROFLEX BARRIER
 EIFS DETAIL**

HIGH IMPACT ASSEMBLY

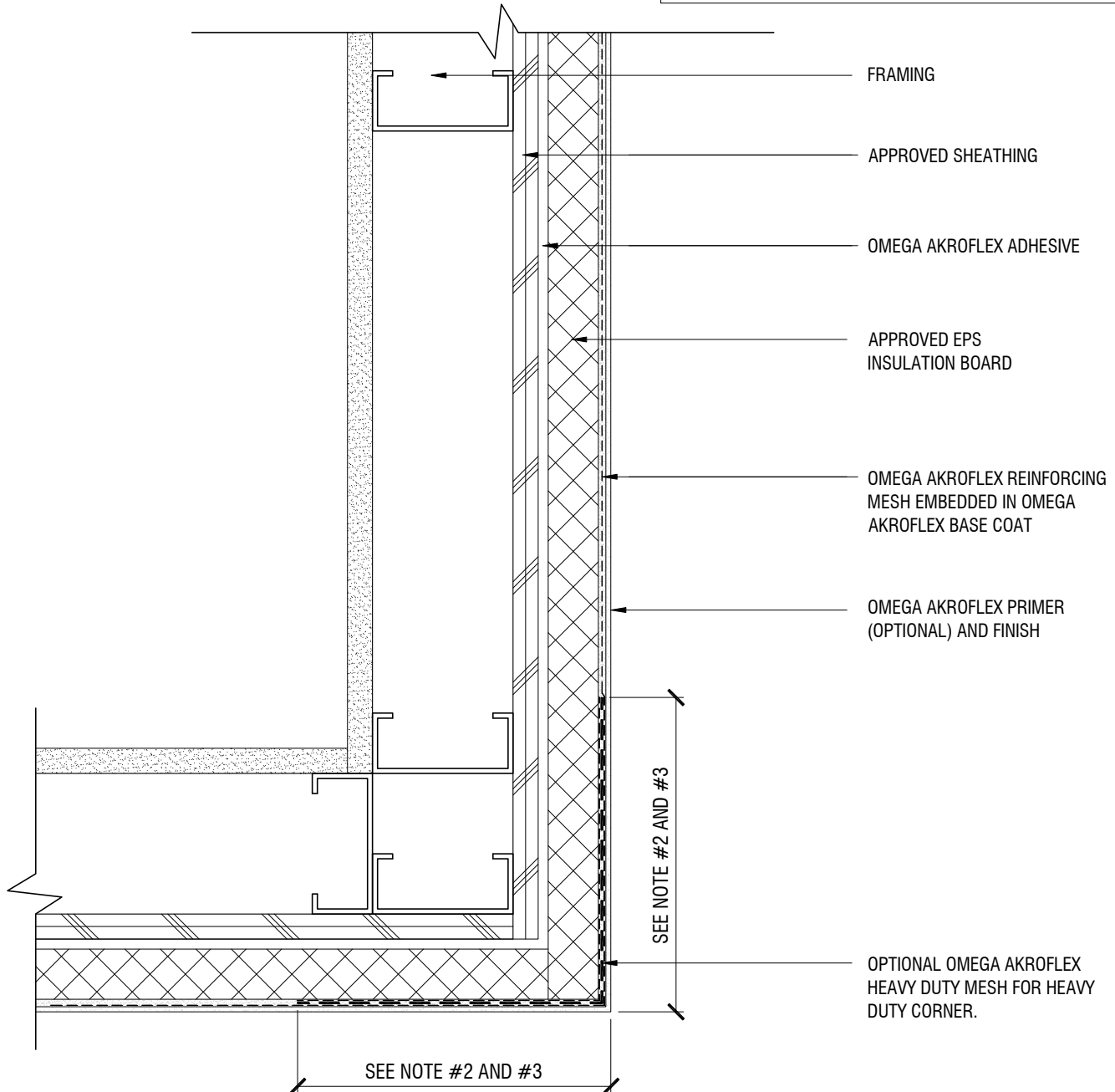
SCALE: 3"=1'-0"

DRAWING NO.: APB 23.00

DRAWN: JUNE 2009

NOTES

1. DOUBLE WRAP OUTSIDE CORNERS WITH REINFORCING MESH OR USE CORNER MESH.
2. FIELD MESH SHALL NOT BE LAPPED WITHIN 8" OF CORNER.
3. FOR OPTIONAL HEAVY DUTY CORNER. HEAVY DUTY MESH SHALL BE BUTTED AT CORNER EDGE. DO NOT LAP.



THE ARCHITECTURE, ENGINEERING, AND DESIGN OF THE PROJECT USING OMEGA PRODUCTS IS THE RESPONSIBILITY OF THE PROJECT'S DESIGN PROFESSIONAL. ALL SYSTEMS MUST COMPLY WITH LOCAL BUILDING CODES AND STANDARDS. THIS DETAIL IS FOR GENERAL INFORMATION AND GUIDANCE ONLY, AND OMEGA INC. SPECIFICALLY DISCLAIMS ANY LIABILITY FOR THE USE OF THIS DETAIL AND FOR THE ARCHITECTURE, DESIGN, ENGINEERING, OR WORKMANSHIP OF ANY PROJECT. THE PROJECT DESIGN PROFESSIONAL DETERMINES, IN ITS SOLE DISCRETION, WHETHER THIS DETAIL OR A FUNCTIONALLY EQUIVALENT ALTERNATIVE IS BEST SUITED FOR THE THE PROJECT. USE OF A FUNCTIONALLY EQUIVALENT DETAIL DOES NOT VIOLATE OMEGA'S WARRANTY. THIS DETAIL IS SUBJECT TO CHANGE WITHOUT NOTICE. CONTACT OMEGA TO INSURE YOU HAVE THE MOST RECENT VERSION.



CORPORATE OFFICE
 1681 CALIFORNIA AVE., CORONA, CA 92881
 E-MAIL: INFO@OMEGA-PRODUCTS.COM
 WEBSITE: WWW.OMEGA-PRODUCTS.COM

AKROFLEX BARRIER EIFS DETAIL

TYPICAL OR HEAVY DUTY CORNER DETAILS

SCALE: 3"=1'-0"

DRAWING NO.: APB 24.00

DRAWN: JUNE 2009