

# AkroFlex WM

## A Class PB Exterior Insulation and Finish System with Drainage

### AKROFLEX WATER MANAGED EXTERIOR INSULATION AND FINISH SYSTEM

is a lightweight, multi-component exterior wall assembly. EIFS can resemble traditional stucco, while offering additional energy efficiency, design versatility, weatherability, and durability. For these reasons, EIFS has become one of the most popular cladding options with billions of square feet installed on buildings around the world. Omega Products is a leader in the EIFS industry with decades of successful installations.

### SYSTEM DESCRIPTION

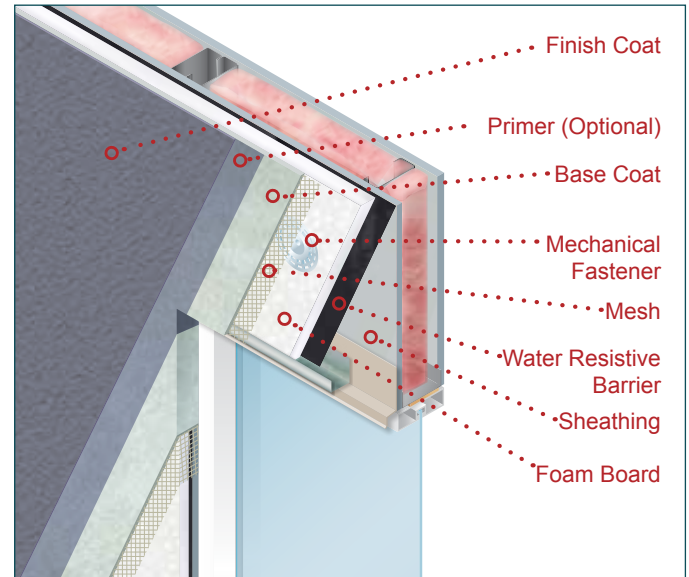
The AkroFlex Water Managed (WM) System is Class PB system utilizing a water-resistant barrier and a means of draining incidental moisture to the exterior. AkroFlex WM consists of a water-barrier applied over approved, properly prepared substrates. Foam board is mechanically attached to the sheathing, and then base coat with mesh fully embedded is applied over the foam. Lastly, AkroFlex 100% acrylic finish and optional primer are applied. Like a standard PB system, AkroFlex WM's finish and base coats are designed to keep moisture on the exterior surface, but WM adds an additional layer of moisture protection with a water-resistant barrier.

### DESIGN CONSIDERATIONS

- May be applied over the following:
  - Steel or wood framed construction with the following substrates:
    - ASTM C1396 water-resistant gypsum sheathing
    - ASTM C1177 glassmat faced gypsum sheathing
    - ASTM C1325 cement boards
    - ASTM C1278 gypsum fiber panels
    - Exterior grade or exposure 1 plywood
    - Exposure 1 OSB
  - Poured concrete or masonry
  - May be applied over fire-resistant-rated construction without adversely affecting the rating or is available in EIFS specific fire-resistant-rated assemblies
- Available in non-combustible assemblies (NFPA 285)
- May be panelized to meet project construction needs
- Visit [omega-products.com](http://omega-products.com) for additional design and installation requirements, including the Intertek CCRR-0466 report, specification (OP901), standard system details (APB), and individual product data sheets

### USES

AkroFlex Water Managed is an excellent exterior wall cladding for new or retrofit commercial, residential, or institutional projects.



### AKROFLEX ADVANTAGES

FEATURES	BENEFITS
<i>Water Managed</i>	Protection from incidental moisture damage
<i>Energy Efficient</i>	Reduces operating energy costs due to increased wall insulation and reduced air infiltration
<i>Design Flexibility</i>	Can be fashioned into virtually any shape or design and is available in a wide selection of colors and textures
<i>Lightweight</i>	Reduces the structural load requirements
<i>Weather-Resistant</i>	AkroFlex finishes and base coats are inherently weather resistant
<i>Durable</i>	Fade, crack, abrasion, and dirt pickup resistant; low life cycle costs
<i>System Warranty</i>	Up to 18-years when used in combination with other Omega products.

Approved by: \_\_\_\_\_

Date: \_\_\_\_\_



# AkroFlex WM

## A Class PB Exterior Insulation and Finish System with Drainage

### BASE COATS

The following products may be used as an adhesive and/or base coat:

- StyroGlue (5 gal pail): Field mixed with portland cement.
- StyroGlue DryBond (50 lb bag): Field mixed with water.
- StyroGlue Plus (5 gal pail): Field mixed with portland cement. Increased water resistance
- StyroGlue TF (5 gal pail): Fiber reinforced, and tintable.

### WATER-RESISTIVE BARRIER<sup>2</sup>

- Minimum No. 15 asphalt nonperforated felt complying with ASTM D 226 for Type I (IBC or IRC) or asphalt-saturated rag felt complying with UL Standard 55A (UBC)
- Minimum Grade D kraft building paper complying with UBC Standard 14-1 or ICC-ES Acceptance Criteria for Water-resistive Barriers (AC38)
- Material recognized in a current evaluation report as complying with the ICC-ES Acceptance Criteria for Water-resistive Barriers (AC38)
- AkroGuard Water-Resistive Air Barrier Assembly consists of a field applied, non-cementitious, flexible coating and joint/transition treatments that create a water-resistive air barrier assembly. 2
- When applied over any wood-based sheathing, the barrier shall be a minimum of two layers of Grade D kraft building paper or equivalent

### DRAINAGE OPTIONS

- Grooved foam
- Drainage mat
- Water-resistive barrier with drainage

### EPS FOAM BOARD<sup>1</sup>

Type I EPS board complying with ASTM C578 with a nominal density of 1 pound per cubic foot, a flame-spread rating of 25 or less, a smoke-developed rating not exceeding 450, and a thickness of 1 to 4-inches.

### MECHANICAL FASTENERS<sup>1</sup>

- Wind-Devil: Manufactured by Wind-Lock are polypropylene, 1¼-inch diameter-by-¾-inch-deep (44.5 mm by 19.1 mm) plates with corrosion-resistant buglehead screws. Screws must be designated "S Series" for steel framing, and "W Series" for wood framing and wood-based sheathing.
- Wind-Devil 2: Manufactured by Wind-Lock are polypropylene, 2-inch-diameter-by-¾-inch-deep (51 mm by 19.1 mm) plates using the same type of screws as the Wind-Devil fasteners.
- Plasti-Grip III and IV: Manufactured by Rodenhouse are polypropylene plastic, 1¼-inch-diameter (44.5 mm) plates using the same type of screws as the Wind-Devil fasteners.

### REINFORCING MESH

AkroFlex Meshes are alkali-resistant woven glass fiber fabrics specially designed to be used with AkroFlex EIFS Systems. Meshes are available in a range of weights that provide different levels of strength and impact resistance.

- Ultra Heavy Duty Mesh (20oz): For locations needing the highest impact resistance, such as ground floors and high traffic areas.
- Heavy Duty Mesh (15oz): For locations needing high impact resistance, such as ground floors and other higher traffic areas.
- Intermediate Mesh (11.5oz): For locations needing additional impact resistance, such as medium traffic areas.
- Standard Mesh (4.2oz): For locations needing standard impact resistance, such as second stories or other low traffic areas where impact is unlikely.
- Starter Mesh (4.2oz): For back wrapping and detail work.

NOTE: Overlap all mesh joints minimum 2.5" (64mm). Ultra Heavy Duty and Heavy Duty Mesh should be tightly butted, not overlapped, and should be covered with a layer of Standard Mesh.

### DISCLAIMER

Omega Products International [Manufacturer] MAKES NO WARRANTY OF MERCHANTABILITY OR FITNESS FOR A PARTICULAR PURPOSE WITH RESPECT TO THE PRODUCT(S) SOLD HEREIN. The recommendations, suggestions, statements and technical data are based on the best knowledge available to Manufacturer and are given for informational purposes ONLY and without any responsibility for their use. It is expressly understood and agreed, as a condition of the use of this product, that the buyer's sole and exclusive remedy for any claimed defective product against Manufacturer shall be the replacement of products actually proven to be defective. Handling and use of the products are beyond the control of Manufacturer; therefore, no warranty is made, expressed or implied, as to the results obtained from the use of the product or against any claims for infringement of patents resulting from use of the product. Under no circumstance shall Manufacturer be liable for incidental or consequential damages arising out of the use or the improper application of the product. Before applying the product, the user shall determine the suitability of the product for their independent use, assuming all risks and liability whatsoever in connection therewith. This writing constitutes a complete and exclusive statement of the understanding between Manufacturer and Buyer.

### INSTALLATION & DESIGN REQUIREMENTS

- Substrates must be structurally sound, clean, dry, and free of all material that may reduce bonding of the adhesive.
- Maximum allowable deflection of structural wall components is 1/240 of the span. Final expansion and control joint design and location are the responsibility of the design professional.
- Sealants must be compatible with the adjacent EIFS components, be approved by Omega Products, and must meet ASTM C920 (Type S or M, minimum Grade NS, minimum Class 25, and Use O). Periodic sealant inspections required per sealant's manufacturer's requirements.
- Expansion joints are required at dissimilar substrates, floor lines in wood-framed construction in which lumber shrinkage will occur, where through wall expansion joints occur, where the EIFS abuts another material, and where structural movement is anticipated.
- Store and apply all component products per the product's data sheet.
- Do not use below grade. Terminate a minimum of 8-inches above grade, 6-inches above finished grade, or as specified by local code.
- Walls should be designed to prevent bulk water from getting behind the foam board or running down the face of the EIFS. The bottom of the wall should have weep screed or another effective means to drain any water that may get behind the foam board.
- Periodic sealant inspections required per sealant's manufacturer's requirements.
- Do not apply system when the ambient and surface temperatures are below 40°F (4°C). The use of OmegaCure will improve the hydration of cement-based adhesives and base coats at low temperatures.

### PRIMER (OPTIONAL)<sup>2</sup>

- AkroFlex Base Primer is 100% acrylic-based primer designed to promote bond strength, color consistency and uniform suction, while increasing water resistance.

### AKROFLEX FINISHES

AkroFlex 100% acrylic based finishes use the latest Dirt Pickup Resistance (DPR) technology, to provide long lasting, weather-resistant, durable finishes that will resist discoloration, fading, or mold growth. A wide variety of textures are possible depending on the finish choice and application method. AkroLastic (elastomeric) or AkroSil (silicone enhanced) finishes are also available.

<sup>1</sup> Manufactured by others.

<sup>2</sup> The use of primer and/or AkroGuard will increase the length of the system's warranty.

### CLAIMS

Any Claimant shall notify Manufacturer immediately in writing of any alleged defect in the material. Claimant will provide Manufacturer with a reasonable and exclusive opportunity to investigate and test for the alleged defect. For any claim that is not valid Claimant agrees to pay Omega's reasonable charges, including travel and labor associated with investigation of such claim.

### TECHNICAL ASSISTANCE

Technical assistance and information is available by calling Omega Products International at (951) 737-7447 or by email at info@omega-products.com.

### WARRANTY

The following is made in lieu of all expressed and implied rights, warranties and conditions, statutory or otherwise. The manufacturer's only obligation shall be to replace such quantity of products proven to be defective within one year following the date of manufacture, provided that the alleged defective product is returned prepaid to the manufacturer's plant and is accompanied with proof of purchase and batch number.