

Three Coat Stucco System Typical Details

PRODUCTS INTERNATIONAL

THREE COAT STUCCO SYSTEM

Table of Contents

TCS 01 APPLICATION OVER APPROVED SHEATHING

TCS 02 TYPICAL TERMINATION AT FOUNDATION

TCS 03 TYPICAL CORNER DETAILS

TCS 04 TYPICAL CONTROL JOINT

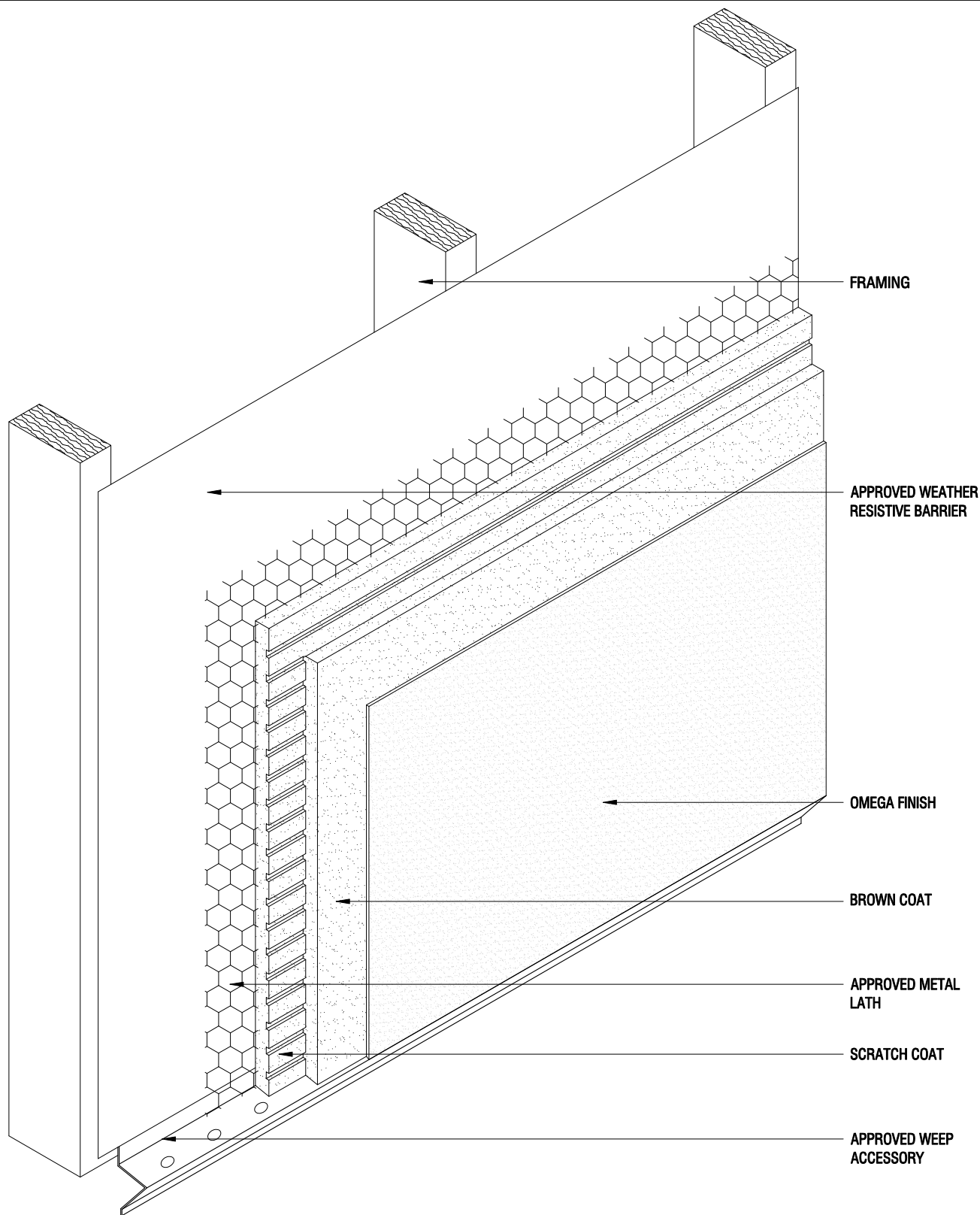
TCS 05 TYPICAL EXPANSION JOINTS

TCS 06 TYPICAL TERMINATION AT WINDOW HEAD AND SILL

TCS 07 TYPICAL FOAM PLANT-ONS

www.omega-products.com





FRAMING

APPROVED WEATHER RESISTIVE BARRIER

OMEGA FINISH

BROWN COAT

APPROVED METAL LATH

SCRATCH COAT

APPROVED WEEP ACCESSORY

THE ARCHITECTURE, ENGINEERING, AND DESIGN OF THE PROJECT USING OMEGA PRODUCTS IS THE RESPONSIBILITY OF THE PROJECT'S DESIGN PROFESSIONAL. ALL SYSTEMS MUST COMPLY WITH LOCAL BUILDING CODES AND STANDARDS. THIS DETAIL IS FOR GENERAL INFORMATION AND GUIDANCE ONLY, AND OMEGA INC. SPECIFICALLY DISCLAIMS ANY LIABILITY FOR THE USE OF THIS DETAIL AND FOR THE ARCHITECTURE, DESIGN, ENGINEERING, OR WORKMANSHIP OF ANY PROJECT. THE PROJECT DESIGN PROFESSIONAL DETERMINES, IN ITS SOLE DISCRETION, WHETHER THIS DETAIL OR A FUNCTIONALLY EQUIVALENT ALTERNATIVE IS BEST SUITED FOR THE THE PROJECT. USE OF A FUNCTIONALLY EQUIVALENT DETAIL DOES NOT VIOLATE OMEGA'S WARRANTY. THIS DETAIL IS SUBJECT TO CHANGE WITHOUT NOTICE. CONTACT OMEGA TO INSURE YOU HAVE THE MOST RECENT VERSION.



CORPORATE OFFICE
 1681 CALIFORNIA AVE., CORONA, CA 92881
 E-MAIL: INFO@OMEGA-PRODUCTS.COM
 WEBSITE: WWW.OMEGA-PRODUCTS.COM

THREE-COAT SYSTEM DETAILS

APPLICATION OVER
 APPROVED SHEATHING

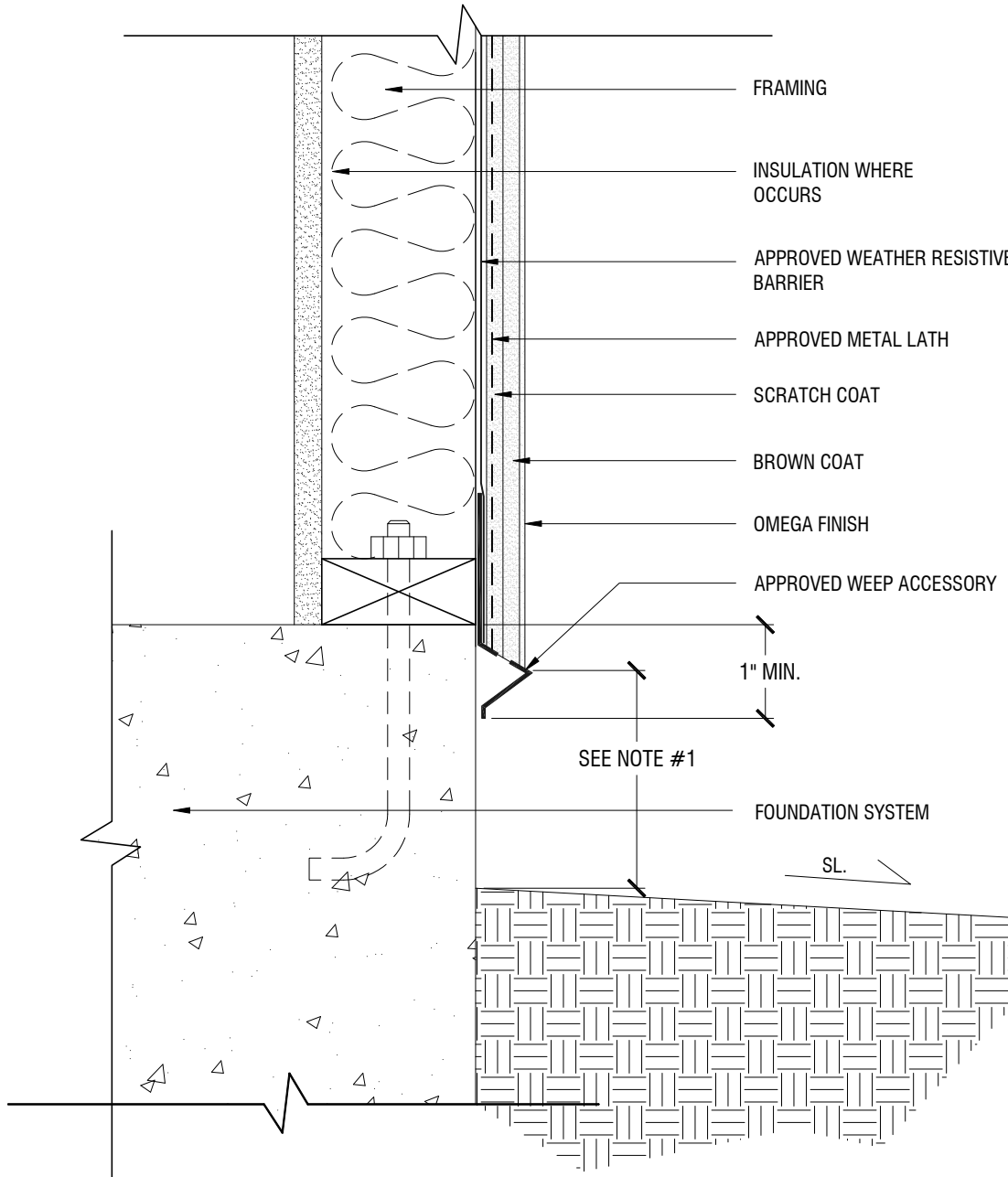
SCALE: 3"=1'-0"

DRAWING NO.: TCS 01.00

DRAWN: JUNE 2011

NOTES

1. 4" MIN. ABOVE GRADE, 2" MIN. ABOVE PAVED SURFACES/HARDSCAPE, OR AS SPECIFIED BY LOCAL CODE



THE ARCHITECTURE, ENGINEERING, AND DESIGN OF THE PROJECT USING OMEGA PRODUCTS IS THE RESPONSIBILITY OF THE PROJECT'S DESIGN PROFESSIONAL. ALL SYSTEMS MUST COMPLY WITH LOCAL BUILDING CODES AND STANDARDS. THIS DETAIL IS FOR GENERAL INFORMATION AND GUIDANCE ONLY, AND OMEGA INC. SPECIFICALLY DISCLAIMS ANY LIABILITY FOR THE USE OF THIS DETAIL AND FOR THE ARCHITECTURE, DESIGN, ENGINEERING, OR WORKMANSHIP OF ANY PROJECT. THE PROJECT DESIGN PROFESSIONAL DETERMINES, IN ITS SOLE DISCRETION, WHETHER THIS DETAIL OR A FUNCTIONALLY EQUIVALENT ALTERNATIVE IS BEST SUITED FOR THE THE PROJECT. USE OF A FUNCTIONALLY EQUIVALENT DETAIL DOES NOT VIOLATE OMEGA'S WARRANTY. THIS DETAIL IS SUBJECT TO CHANGE WITHOUT NOTICE. CONTACT OMEGA TO INSURE YOU HAVE THE MOST RECENT VERSION.



CORPORATE OFFICE
1681 CALIFORNIA AVE., CORONA, CA 92881
E-MAIL: INFO@OMEGA-PRODUCTS.COM
WEBSITE: WWW.OMEGA-PRODUCTS.COM

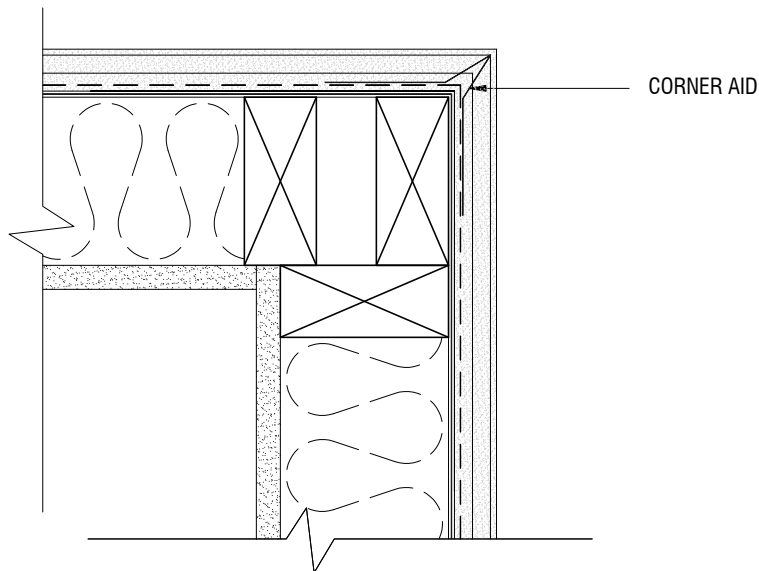
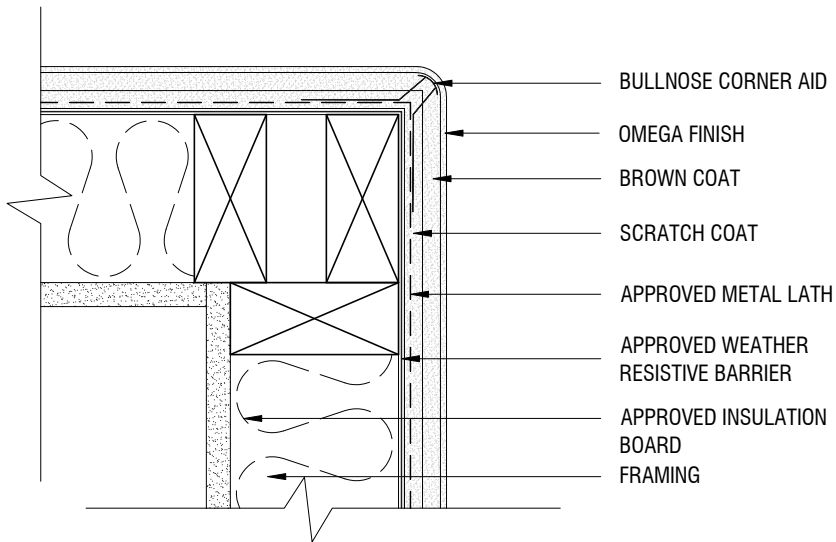
THREE-COAT SYSTEM DETAILS

TYPICAL TERMINATION AT FOUNDATION

SCALE: 3"=1'-0"

DRAWING NO.: TCS 02.00

DRAWN: JUNE 2011



THE ARCHITECTURE, ENGINEERING, AND DESIGN OF THE PROJECT USING OMEGA PRODUCTS IS THE RESPONSIBILITY OF THE PROJECT'S DESIGN PROFESSIONAL. ALL SYSTEMS MUST COMPLY WITH LOCAL BUILDING CODES AND STANDARDS. THIS DETAIL IS FOR GENERAL INFORMATION AND GUIDANCE ONLY, AND OMEGA INC. SPECIFICALLY DISCLAIMS ANY LIABILITY FOR THE USE OF THIS DETAIL AND FOR THE ARCHITECTURE, DESIGN, ENGINEERING, OR WORKMANSHIP OF ANY PROJECT. THE PROJECT DESIGN PROFESSIONAL DETERMINES, IN ITS SOLE DISCRETION, WHETHER THIS DETAIL OR A FUNCTIONALLY EQUIVALENT ALTERNATIVE IS BEST SUITED FOR THE THE PROJECT. USE OF A FUNCTIONALLY EQUIVALENT DETAIL DOES NOT VIOLATE OMEGA'S WARRANTY. THIS DETAIL IS SUBJECT TO CHANGE WITHOUT NOTICE. CONTACT OMEGA TO INSURE YOU HAVE THE MOST RECENT VERSION.



CORPORATE OFFICE
 1681 CALIFORNIA AVE., CORONA, CA 92881
 E-MAIL: INFO@OMEGA-PRODUCTS.COM
 WEBSITE: WWW.OMEGA-PRODUCTS.COM

THREE-COAT SYSTEM DETAILS

TYPICAL CORNER DETAILS

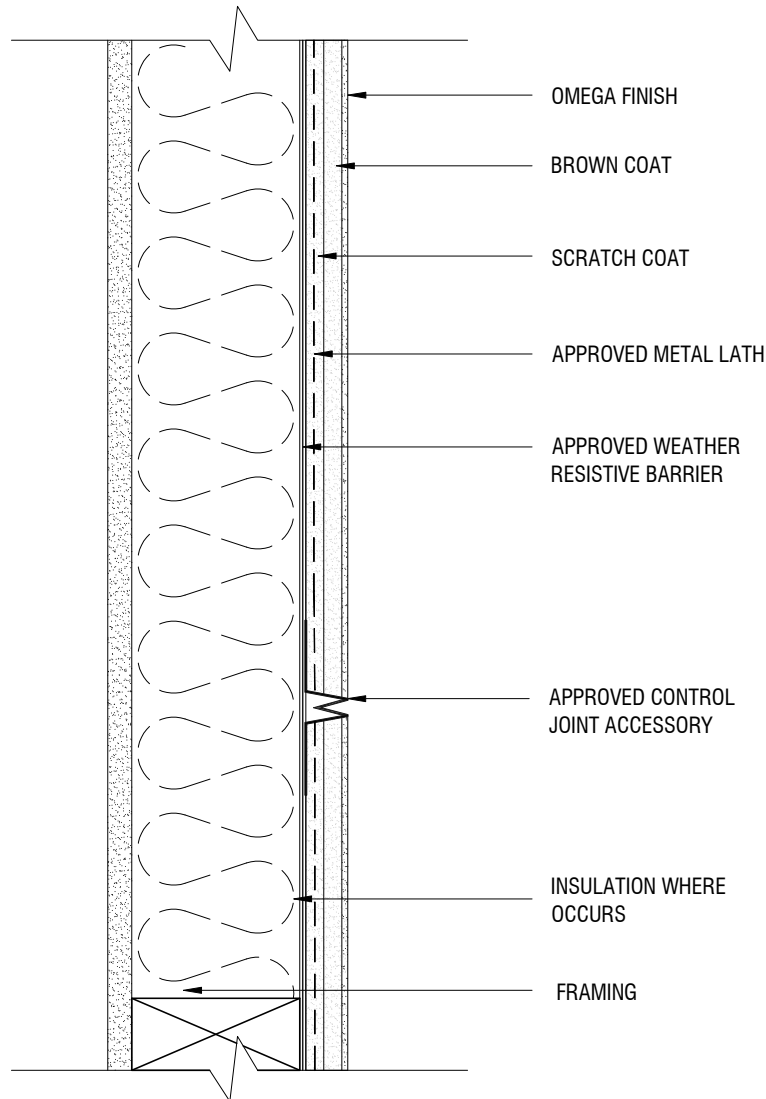
SCALE: 3"=1'-0"

DRAWING NO.: TCS 03.00

DRAWN: JUNE 2011

NOTES

1. RESTRICT USE OF THIS DETAIL TO AREA WHERE MINIMAL MOVEMENT IS ANTICIPATED
2. IF MOVEMENT IS ANTICIPATED REFER TO OMEGA TCS 04.00.
3. AESTHETIC JOINTS MAY BE INSTALLED OVER METAL LATH AND WIRE TIED.



THE ARCHITECTURE, ENGINEERING, AND DESIGN OF THE PROJECT USING OMEGA PRODUCTS IS THE RESPONSIBILITY OF THE PROJECT'S DESIGN PROFESSIONAL. ALL SYSTEMS MUST COMPLY WITH LOCAL BUILDING CODES AND STANDARDS. THIS DETAIL IS FOR GENERAL INFORMATION AND GUIDANCE ONLY, AND OMEGA INC. SPECIFICALLY DISCLAIMS ANY LIABILITY FOR THE USE OF THIS DETAIL AND FOR THE ARCHITECTURE, DESIGN, ENGINEERING, OR WORKMANSHIP OF ANY PROJECT. THE PROJECT DESIGN PROFESSIONAL DETERMINES, IN ITS SOLE DISCRETION, WHETHER THIS DETAIL OR A FUNCTIONALLY EQUIVALENT ALTERNATIVE IS BEST SUITED FOR THE THE PROJECT. USE OF A FUNCTIONALLY EQUIVALENT DETAIL DOES NOT VIOLATE OMEGA'S WARRANTY. THIS DETAIL IS SUBJECT TO CHANGE WITHOUT NOTICE. CONTACT OMEGA TO INSURE YOU HAVE THE MOST RECENT VERSION.



CORPORATE OFFICE
 1681 CALIFORNIA AVE., CORONA, CA 92881
 E-MAIL: INFO@OMEGA-PRODUCTS.COM
 WEBSITE: WWW.OMEGA-PRODUCTS.COM

THREE-COAT SYSTEM DETAILS

TYPICAL CONTROL JOINT

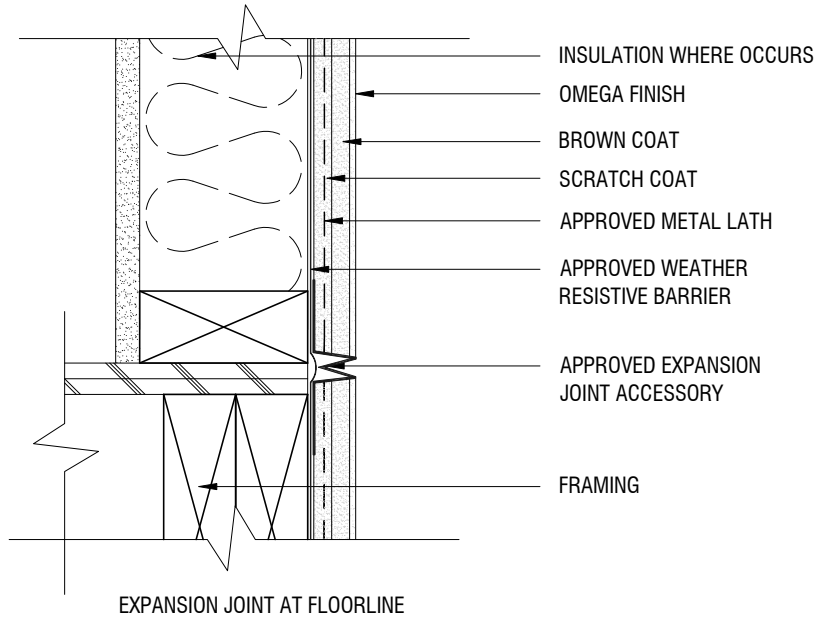
SCALE: 3"=1'-0"

DRAWING NO.: TCS 04.00

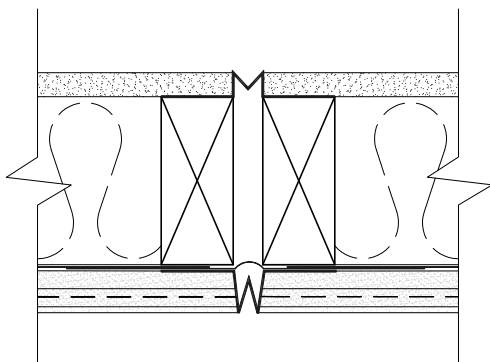
DRAWN: JUNE 2011

NOTES

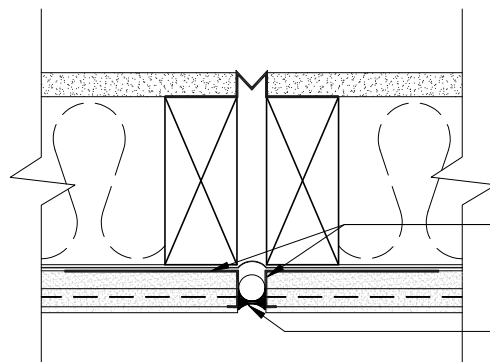
1. AN OPTIONAL FLASHING MEMBRANE MAY BE USED BEHIND THE EXPANSION JOINT.



INSULATION WHERE OCCURS
 OMEGA FINISH
 BROWN COAT
 SCRATCH COAT
 APPROVED METAL LATH
 APPROVED WEATHER RESISTIVE BARRIER
 APPROVED EXPANSION JOINT ACCESSORY
 FRAMING



VERTICAL EXPANSION JOINT WITH APPROVED EXPANSION JOINT ACCESSORY



VERTICAL EXPANSION JOINT WITH BACKER ROD AND SEALANT

APPROVED CASING BEAD
 APPROVED BACKER ROD AND SEALANT

THE ARCHITECTURE, ENGINEERING, AND DESIGN OF THE PROJECT USING OMEGA PRODUCTS IS THE RESPONSIBILITY OF THE PROJECT'S DESIGN PROFESSIONAL. ALL SYSTEMS MUST COMPLY WITH LOCAL BUILDING CODES AND STANDARDS. THIS DETAIL IS FOR GENERAL INFORMATION AND GUIDANCE ONLY, AND OMEGA INC. SPECIFICALLY DISCLAIMS ANY LIABILITY FOR THE USE OF THIS DETAIL AND FOR THE ARCHITECTURE, DESIGN, ENGINEERING, OR WORKMANSHIP OF ANY PROJECT. THE PROJECT DESIGN PROFESSIONAL DETERMINES, IN ITS SOLE DISCRETION, WHETHER THIS DETAIL OR A FUNCTIONALLY EQUIVALENT ALTERNATIVE IS BEST SUITED FOR THE THE PROJECT. USE OF A FUNCTIONALLY EQUIVALENT DETAIL DOES NOT VIOLATE OMEGA'S WARRANTY. THIS DETAIL IS SUBJECT TO CHANGE WITHOUT NOTICE. CONTACT OMEGA TO INSURE YOU HAVE THE MOST RECENT VERSION.



CORPORATE OFFICE
 1681 CALIFORNIA AVE., CORONA, CA 92881
 E-MAIL: INFO@OMEGA-PRODUCTS.COM
 WEBSITE: WWW.OMEGA-PRODUCTS.COM

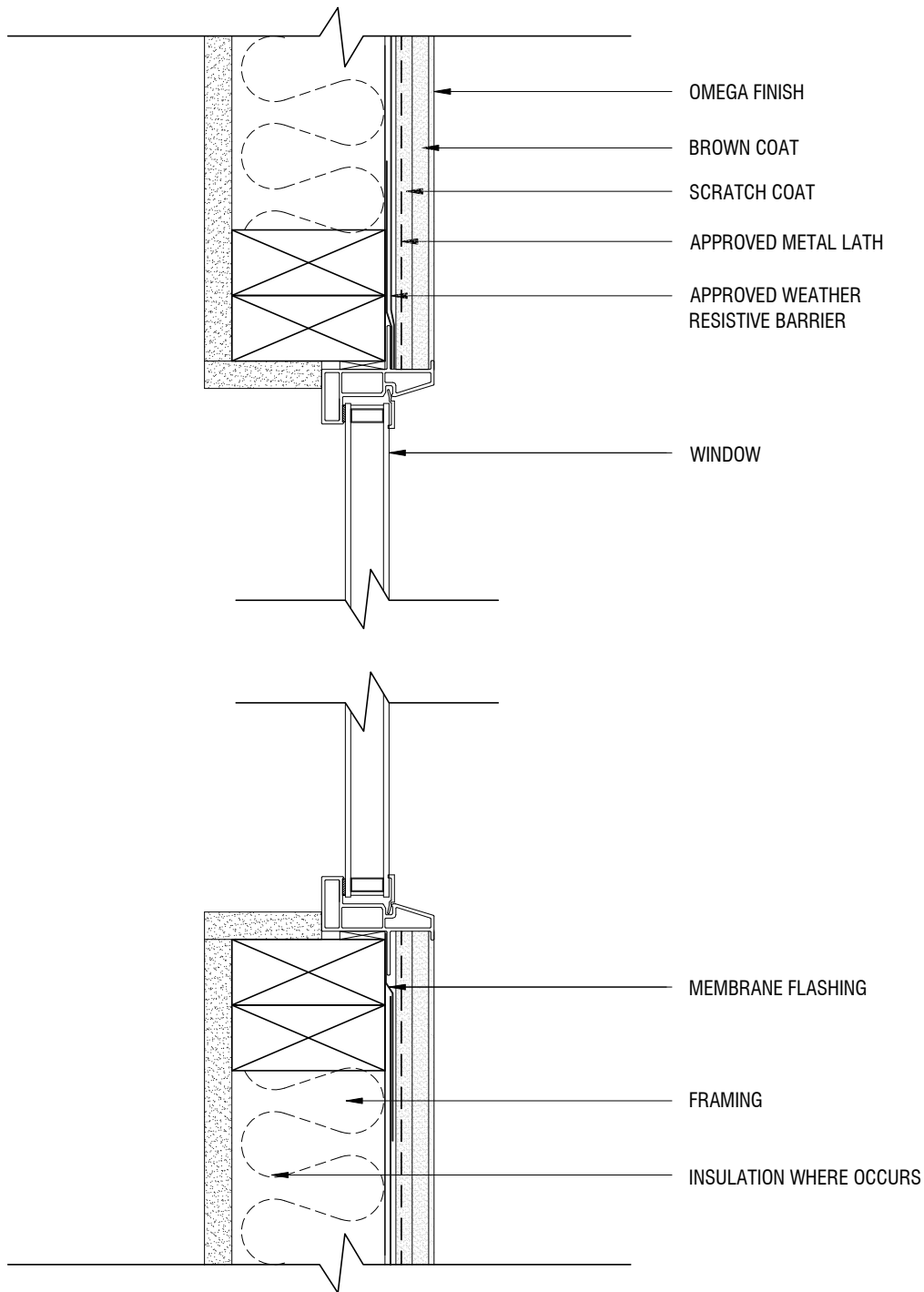
THREE-COAT SYSTEM DETAILS

TYPICAL EXPANSION JOINTS

SCALE: 3"=1'-0"

DRAWING NO.: TCS 05.00

DRAWN: JUNE 2011



THE ARCHITECTURE, ENGINEERING, AND DESIGN OF THE PROJECT USING OMEGA PRODUCTS IS THE RESPONSIBILITY OF THE PROJECT'S DESIGN PROFESSIONAL. ALL SYSTEMS MUST COMPLY WITH LOCAL BUILDING CODES AND STANDARDS. THIS DETAIL IS FOR GENERAL INFORMATION AND GUIDANCE ONLY, AND OMEGA INC. SPECIFICALLY DISCLAIMS ANY LIABILITY FOR THE USE OF THIS DETAIL AND FOR THE ARCHITECTURE, DESIGN, ENGINEERING, OR WORKMANSHIP OF ANY PROJECT. THE PROJECT DESIGN PROFESSIONAL DETERMINES, IN ITS SOLE DISCRETION, WHETHER THIS DETAIL OR A FUNCTIONALLY EQUIVALENT ALTERNATIVE IS BEST SUITED FOR THE THE PROJECT. USE OF A FUNCTIONALLY EQUIVALENT DETAIL DOES NOT VIOLATE OMEGA'S WARRANTY. THIS DETAIL IS SUBJECT TO CHANGE WITHOUT NOTICE. CONTACT OMEGA TO INSURE YOU HAVE THE MOST RECENT VERSION.



CORPORATE OFFICE
 1681 CALIFORNIA AVE., CORONA, CA 92881
 E-MAIL: INFO@OMEGA-PRODUCTS.COM
 WEBSITE: WWW.OMEGA-PRODUCTS.COM

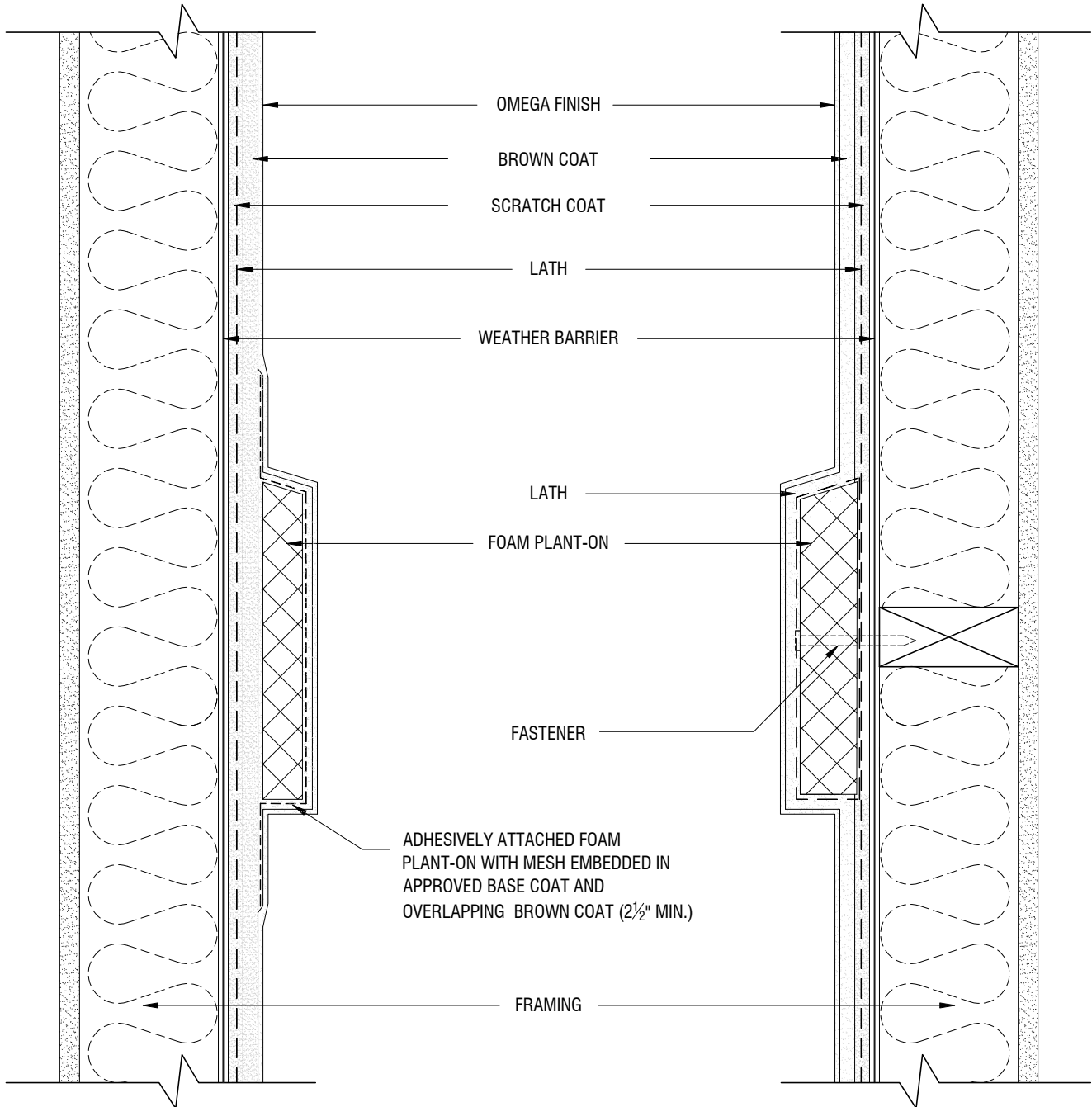
THREE-COAT SYSTEM DETAILS

TYPICAL TERMINATION AT WINDOW HEAD AND SILL

SCALE: 3"=1'-0"

DRAWING NO.: TCS 06.00

DRAWN: JUNE 2011



THE ARCHITECTURE, ENGINEERING, AND DESIGN OF THE PROJECT USING OMEGA PRODUCTS IS THE RESPONSIBILITY OF THE PROJECT'S DESIGN PROFESSIONAL. ALL SYSTEMS MUST COMPLY WITH LOCAL BUILDING CODES AND STANDARDS. THIS DETAIL IS FOR GENERAL INFORMATION AND GUIDANCE ONLY, AND OMEGA INC. SPECIFICALLY DISCLAIMS ANY LIABILITY FOR THE USE OF THIS DETAIL AND FOR THE ARCHITECTURE, DESIGN, ENGINEERING, OR WORKMANSHIP OF ANY PROJECT. THE PROJECT DESIGN PROFESSIONAL DETERMINES, IN ITS SOLE DISCRETION, WHETHER THIS DETAIL OR A FUNCTIONALLY EQUIVALENT ALTERNATIVE IS BEST SUITED FOR THE THE PROJECT. USE OF A FUNCTIONALLY EQUIVALENT DETAIL DOES NOT VIOLATE OMEGA'S WARRANTY. THIS DETAIL IS SUBJECT TO CHANGE WITHOUT NOTICE. CONTACT OMEGA TO INSURE YOU HAVE THE MOST RECENT VERSION.



CORPORATE OFFICE
 1681 CALIFORNIA AVE., CORONA, CA 92881
 E-MAIL: INFO@OMEGA-PRODUCTS.COM
 WEBSITE: WWW.OMEGA-PRODUCTS.COM

THREE-COAT SYSTEM DETAILS

TYPICAL FOAM PLANT-ONS

SCALE: 3"=1'-0"

DRAWING NO.: TCS 07.00

DRAWN: JUNE 2011