

# AKROFLEX BARRIER EIF SYSTEM TYPICAL DETAILS

OMEGA  
PRODUCTS INTERNATIONAL

## TABLE OF CONTENTS

APB 01	APPLICATION OVER APPROVED SHEATHING
APB 02	APPLICATION OVER APPROVED CONCRETE OR MASONRY
APB 03	TYPICAL BOARD LAYOUT FOR STRUCTURAL PENETRATIONS
APB 04	EPS INSULATION BOARD LAYOUT OPTIONAL MECH ATTACHMENT
APB 05	TYPICAL AESTHETIC REVEAL
APB 06	TYPICAL AESTHETIC PLANT-ON
APB 07	TYPICAL SOFFIT DETAIL WITH DRIP REVEAL
APB 08	TYPICAL DIRECT APPLIED SOFFIT DETAIL
APB 09	TYPICAL SOFFIT VENT DETAIL
APB 10	TYPICAL TERMINATION AT FOUNDATION
APB 11	TYPICAL TERMINATION AT DISSIMILAR MATERIALS
APB 12	TYPICAL TERMINATION AT WINDOW HEAD AND SILL
APB 13	TYPICAL TERMINATION AT WINDOW JAMB
APB 14	TYPICAL TERMINATION AT DOOR JAMB
APB 15	TYPICAL TERMINATION AT DOOR HEAD
APB 16	TYPICAL TERMINATION AT DECK
APB 17	TYPICAL PIPE OR CONDUIT PENETRATION
APB 18	TYPICAL LIGHT PENETRATION
APB 19	TYPICAL ATTACHMENT
APB 20	TYPICAL EXPANSION JOINTS
APB 21	TYPICAL PARAPET WITH METAL CAP
APB 22	ROOF/WALL KICK-OUT FLASHING DETAIL
APB 23	HIGH IMPACT ASSEMBLY
APB 24	TYPICAL OR HEAVY DUTY CORNER DETAILS

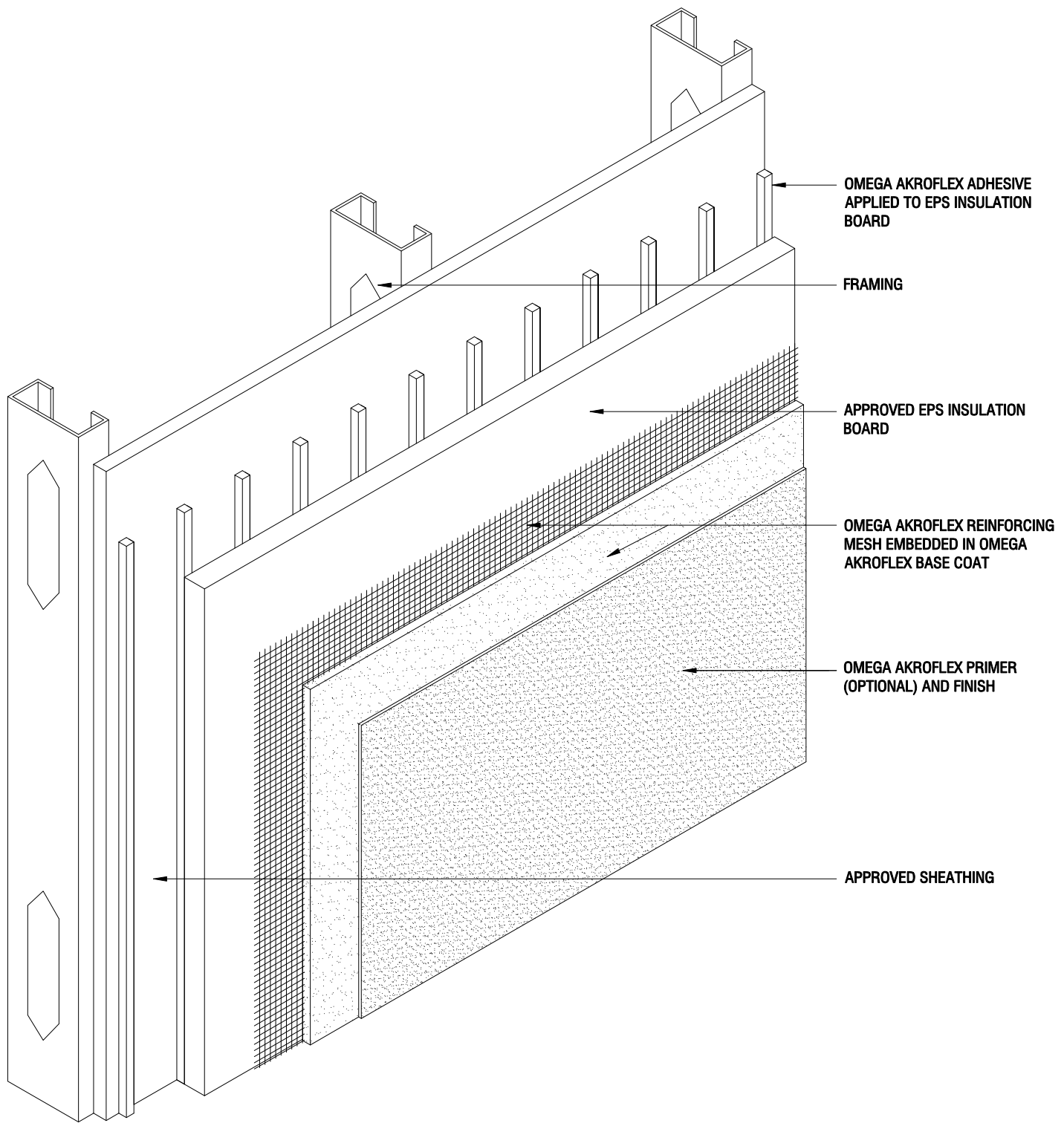
www.omega-products.com

### Disclaimer

Omega Products International, Inc. [Manufacturer] MAKES NO WARRANTY OF MERCHANTABILITY OR FITNESS FOR A PARTICULAR PURPOSE WITH RESPECT TO THE PRODUCT(S) SOLD HEREIN. The recommendations, suggestions, statements and technical data are based on the best knowledge available to Manufacturer and are given for informational purposes ONLY and without any responsibility for their use. It is expressly understood and agreed, as a condition of the use of this product, that the buyer's sole and exclusive remedy for any claimed defective product against Manufacturer shall be the replacement of products actually proven to be defective. Handling and use of the products are beyond the control of Manufacturer; therefore, no warranty is made, expressed or implied, as to the results obtained from the use of the product or against any claims for infringement of patents resulting from use of the product. Under no circumstance shall Manufacturer be liable for incidental or consequential damages arising out of the use or the improper application of the product. Before applying the product, the user shall determine the suitability of the product for his/her independent use, assuming all risks and liability whatsoever in connection therewith. This writing constitutes a complete and exclusive statement of the understanding between Manufacturer and Buyer.



*The Professional's Choice*



OMEGA AKROFLEX ADHESIVE  
APPLIED TO EPS INSULATION  
BOARD

FRAMING

APPROVED EPS INSULATION  
BOARD

OMEGA AKROFLEX REINFORCING  
MESH EMBEDDED IN OMEGA  
AKROFLEX BASE COAT

OMEGA AKROFLEX PRIMER  
(OPTIONAL) AND FINISH

APPROVED SHEATHING

THE ARCHITECTURE, ENGINEERING, AND DESIGN OF THE PROJECT USING OMEGA PRODUCTS IS THE RESPONSIBILITY OF THE PROJECT'S DESIGN PROFESSIONAL. ALL SYSTEMS MUST COMPLY WITH LOCAL BUILDING CODES AND STANDARDS. THIS DETAIL IS FOR GENERAL INFORMATION AND GUIDANCE ONLY, AND OMEGA INC. SPECIFICALLY DISCLAIMS ANY LIABILITY FOR THE USE OF THIS DETAIL AND FOR THE ARCHITECTURE, DESIGN, ENGINEERING, OR WORKMANSHIP OF ANY PROJECT. THE PROJECT DESIGN PROFESSIONAL DETERMINES, IN ITS SOLE DISCRETION, WHETHER THIS DETAIL OR A FUNCTIONALLY EQUIVALENT ALTERNATIVE IS BEST SUITED FOR THE THE PROJECT. USE OF A FUNCTIONALLY EQUIVALENT DETAIL DOES NOT VIOLATE OMEGA'S WARRANTY. THIS DETAIL IS SUBJECT TO CHANGE WITHOUT NOTICE. CONTACT OMEGA TO INSURE YOU HAVE THE MOST RECENT VERSION.



CORPORATE OFFICE  
1681 CALIFORNIA AVE., CORONA, CA 92881  
E-MAIL: [INFO@OMEGA-PRODUCTS.COM](mailto:INFO@OMEGA-PRODUCTS.COM)  
WEBSITE: [WWW.OMEGA-PRODUCTS.COM](http://WWW.OMEGA-PRODUCTS.COM)

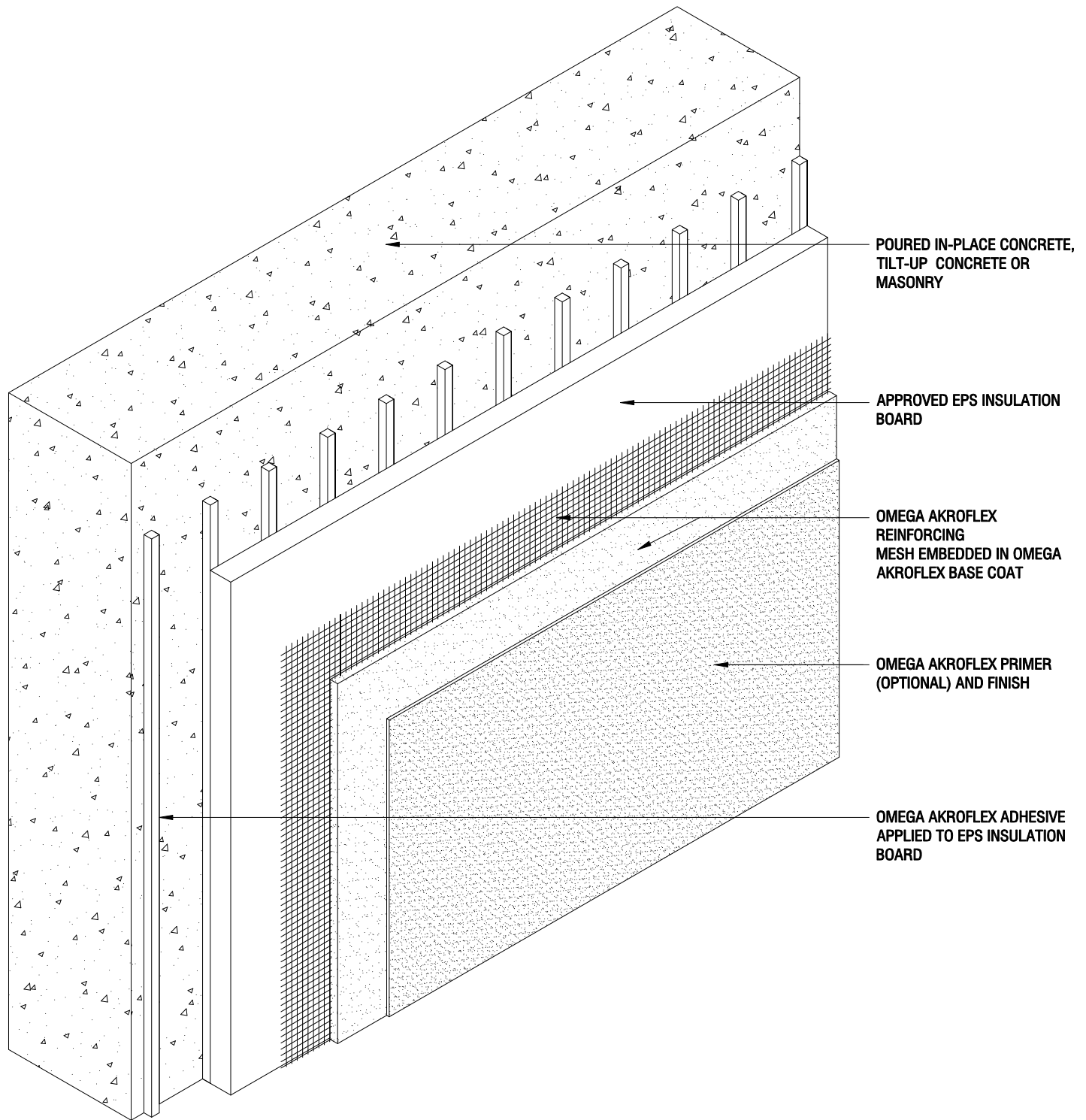
## AKROFLEX BARRIER EIFS DETAIL

### APPLICATION OVER APPROVED SHEATHING

SCALE: 3" = 1'-0"

DRAWING NO.: APB 01.00

DRAWN: JUNE 2009



POURED IN-PLACE CONCRETE,  
TILT-UP CONCRETE OR  
MASONRY

APPROVED EPS INSULATION  
BOARD

OMEGA AKROFLEX  
REINFORCING  
MESH EMBEDDED IN OMEGA  
AKROFLEX BASE COAT

OMEGA AKROFLEX PRIMER  
(OPTIONAL) AND FINISH

OMEGA AKROFLEX ADHESIVE  
APPLIED TO EPS INSULATION  
BOARD

THE ARCHITECTURE, ENGINEERING, AND DESIGN OF THE PROJECT USING OMEGA PRODUCTS IS THE RESPONSIBILITY OF THE PROJECT'S DESIGN PROFESSIONAL. ALL SYSTEMS MUST COMPLY WITH LOCAL BUILDING CODES AND STANDARDS. THIS DETAIL IS FOR GENERAL INFORMATION AND GUIDANCE ONLY, AND OMEGA INC. SPECIFICALLY DISCLAIMS ANY LIABILITY FOR THE USE OF THIS DETAIL AND FOR THE ARCHITECTURE, DESIGN, ENGINEERING, OR WORKMANSHIP OF ANY PROJECT. THE PROJECT DESIGN PROFESSIONAL DETERMINES, IN ITS SOLE DISCRETION, WHETHER THIS DETAIL OR A FUNCTIONALLY EQUIVALENT ALTERNATIVE IS BEST SUITED FOR THE THE PROJECT. USE OF A FUNCTIONALLY EQUIVALENT DETAIL DOES NOT VIOLATE OMEGA'S WARRANTY. THIS DETAIL IS SUBJECT TO CHANGE WITHOUT NOTICE. CONTACT OMEGA TO INSURE YOU HAVE THE MOST RECENT VERSION.



CORPORATE OFFICE  
1681 CALIFORNIA AVE., CORONA, CA 92881  
E-MAIL: [INFO@OMEGA-PRODUCTS.COM](mailto:INFO@OMEGA-PRODUCTS.COM)  
WEBSITE: [WWW.OMEGA-PRODUCTS.COM](http://WWW.OMEGA-PRODUCTS.COM)

## AKROFLEX BARRIER EIFS DETAIL

APPLICATION OVER APPROVED  
CONCRETE OR MASONRY

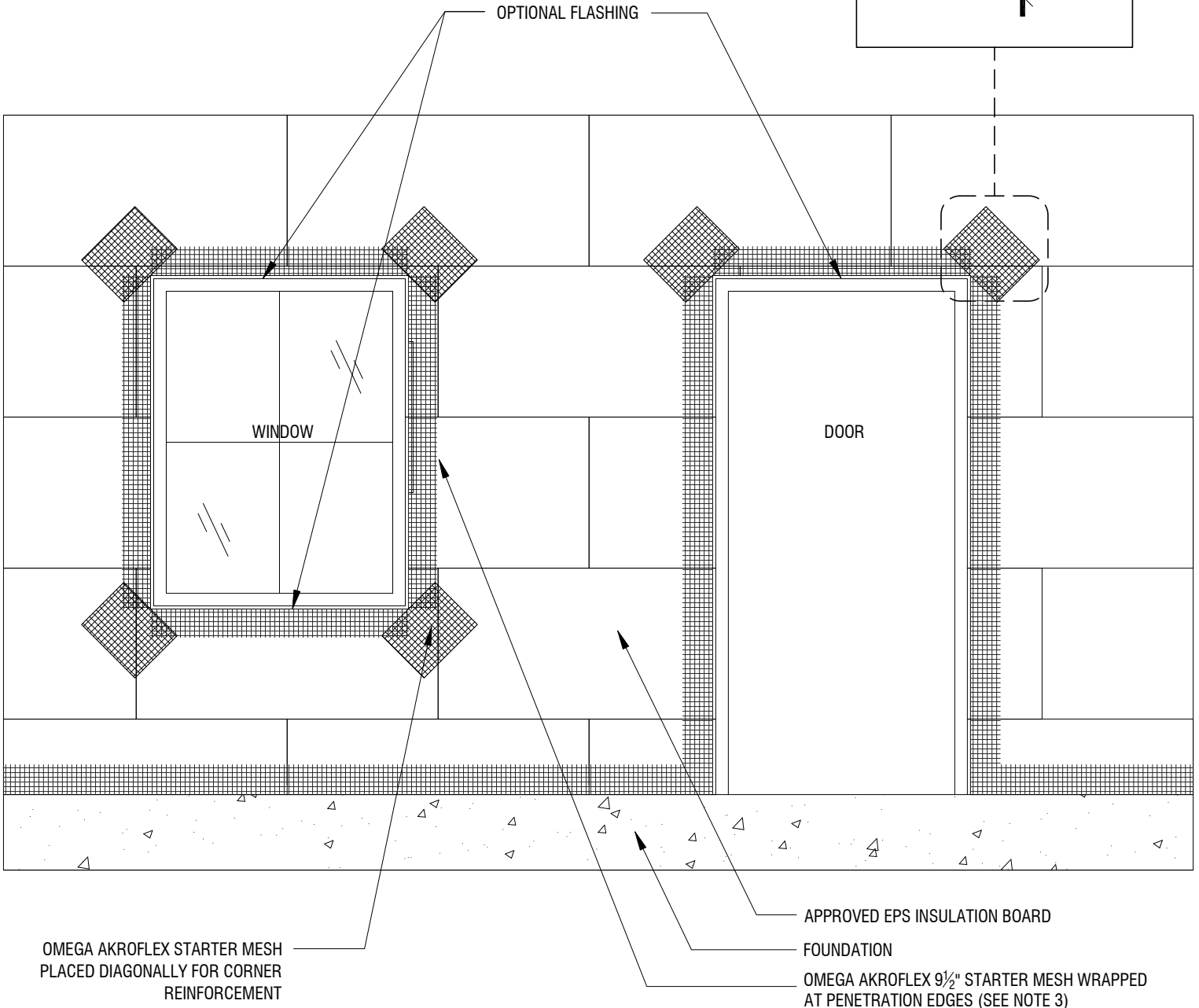
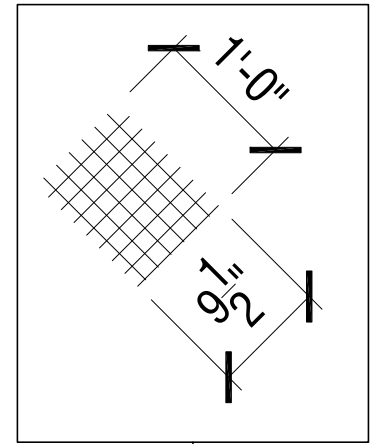
SCALE: 3"=1'-0"

DRAWING NO.: APB 02.00

DRAWN: JUNE 2009

### NOTES

1. EPS BOARD JOINTS SHALL BE STAGGERED AND SHALL NOT ALIGN WITH SHEATHING JOINTS.
2. EPS BOARD JOINTS SHALL NOT ALIGN WITH THE CORNERS OF OPENINGS
3. APPROVED VINYL ACCESSORY MAY BE USED IN LIEU OF WRAPPED MESH.



THE ARCHITECTURE, ENGINEERING, AND DESIGN OF THE PROJECT USING OMEGA PRODUCTS IS THE RESPONSIBILITY OF THE PROJECT'S DESIGN PROFESSIONAL. ALL SYSTEMS MUST COMPLY WITH LOCAL BUILDING CODES AND STANDARDS. THIS DETAIL IS FOR GENERAL INFORMATION AND GUIDANCE ONLY, AND OMEGA INC. SPECIFICALLY DISCLAIMS ANY LIABILITY FOR THE USE OF THIS DETAIL AND FOR THE ARCHITECTURE, DESIGN, ENGINEERING, OR WORKMANSHIP OF ANY PROJECT. THE PROJECT DESIGN PROFESSIONAL DETERMINES, IN ITS SOLE DISCRETION, WHETHER THIS DETAIL OR A FUNCTIONALLY EQUIVALENT ALTERNATIVE IS BEST SUITED FOR THE THE PROJECT. USE OF A FUNCTIONALLY EQUIVALENT DETAIL DOES NOT VIOLATE OMEGA'S WARRANTY. THIS DETAIL IS SUBJECT TO CHANGE WITHOUT NOTICE. CONTACT OMEGA TO INSURE YOU HAVE THE MOST RECENT VERSION.



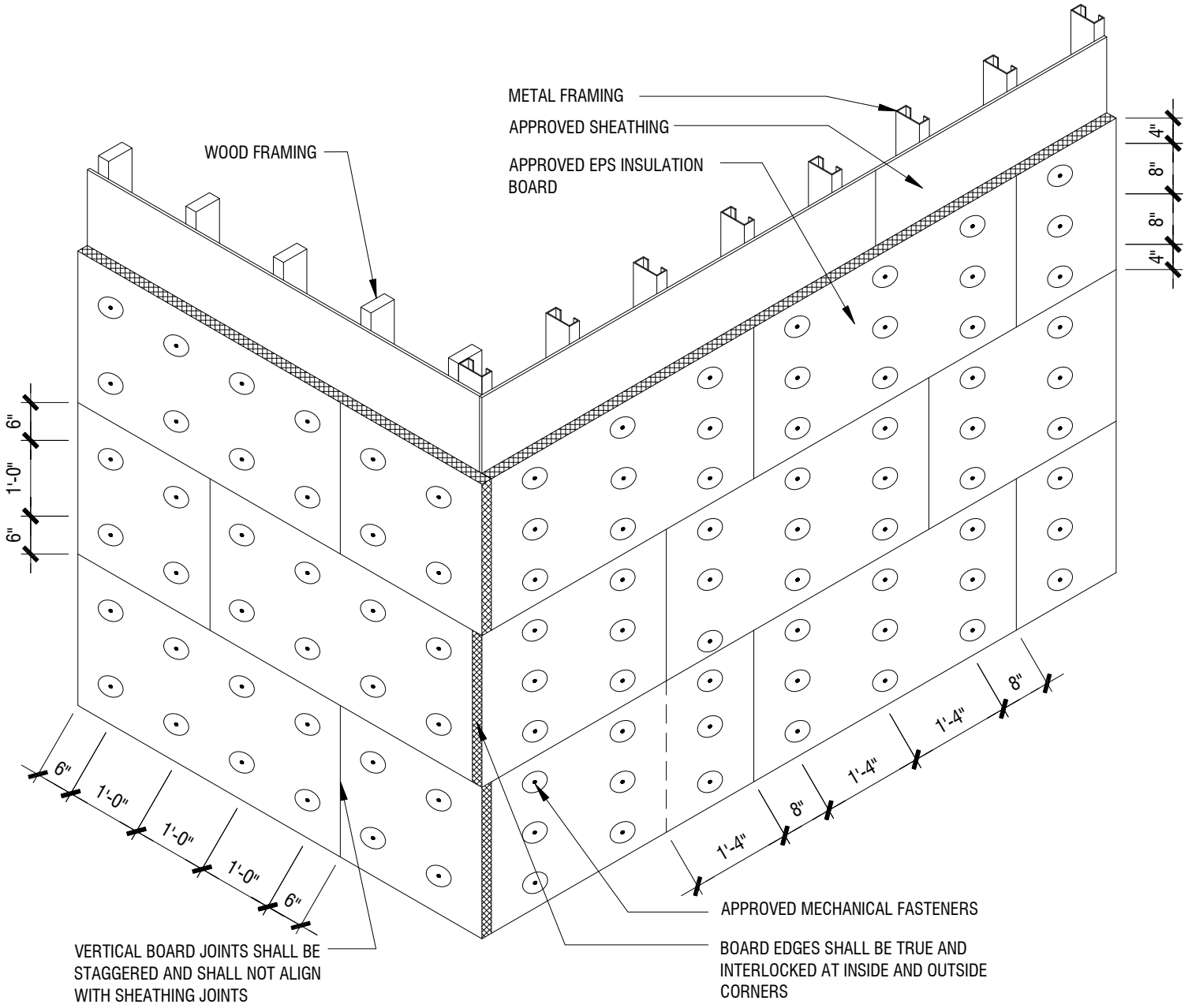
CORPORATE OFFICE  
 1681 CALIFORNIA AVE., CORONA, CA 92881  
 E-MAIL: INFO@OMEGA-PRODUCTS.COM  
 WEBSITE: WWW.OMEGA-PRODUCTS.COM

## AKROFLEX BARRIER EIFS DETAIL

### TYPICAL BOARD LAYOUT FOR STRUCTURAL PENETRATIONS

NOTES

- FASTENER SPACING MAY VARY DUE TO FRAMING AND OR FASTENER MANUFACTURERS SPECIFICATIONS



THE ARCHITECTURE, ENGINEERING, AND DESIGN OF THE PROJECT USING OMEGA PRODUCTS IS THE RESPONSIBILITY OF THE PROJECT'S DESIGN PROFESSIONAL. ALL SYSTEMS MUST COMPLY WITH LOCAL BUILDING CODES AND STANDARDS. THIS DETAIL IS FOR GENERAL INFORMATION AND GUIDANCE ONLY, AND OMEGA INC. SPECIFICALLY DISCLAIMS ANY LIABILITY FOR THE USE OF THIS DETAIL AND FOR THE ARCHITECTURE, DESIGN, ENGINEERING, OR WORKMANSHIP OF ANY PROJECT. THE PROJECT DESIGN PROFESSIONAL DETERMINES, IN ITS SOLE DISCRETION, WHETHER THIS DETAIL OR A FUNCTIONALLY EQUIVALENT ALTERNATIVE IS BEST SUITED FOR THE THE PROJECT. USE OF A FUNCTIONALLY EQUIVALENT DETAIL DOES NOT VIOLATE OMEGA'S WARRANTY. THIS DETAIL IS SUBJECT TO CHANGE WITHOUT NOTICE. CONTACT OMEGA TO INSURE YOU HAVE THE MOST RECENT VERSION.

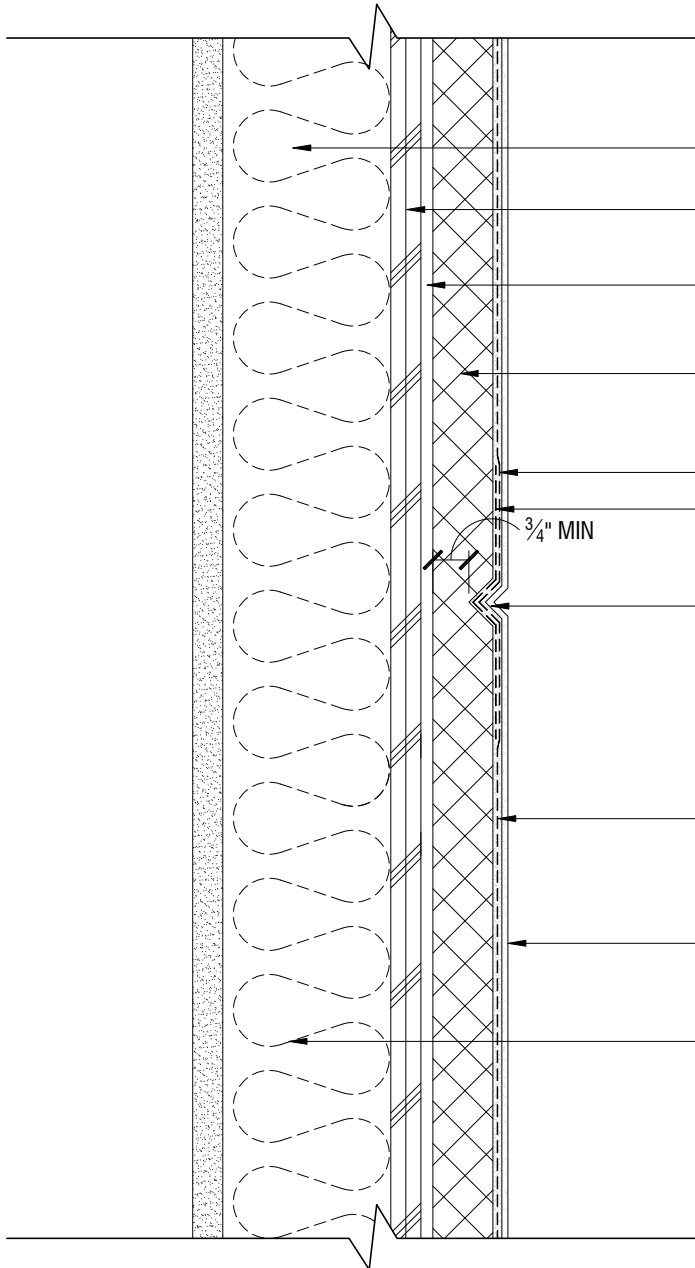
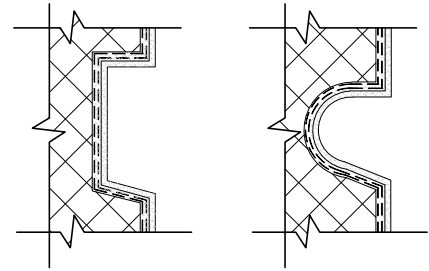


CORPORATE OFFICE  
 1681 CALIFORNIA AVE., CORONA, CA 92881  
 E-MAIL: INFO@OMEGA-PRODUCTS.COM  
 WEBSITE: WWW.OMEGA-PRODUCTS.COM

**AKROFLEX BARRIER  
 EIFS DETAIL**

**EPS INSULATION BOARD LAYOUT  
 OPTIONAL MECH ATTACHMENT**

ALTERNATE REVEAL SHAPES



- FRAMING
- APPROVED SHEATHING
- OMEGA AKROFLEX ADHESIVE
- APPROVED EPS INSULATION BOARD
- OMEGA AKROFLEX STARTER MESH
- LAP STARTER MESH A MINIMUM OF 2½ INCHES
- 3/4" MIN
- AESTHETIC REVEAL
- OMEGA AKROFLEX REINFORCING MESH EMBEDDED IN OMEGA AKROFLEX BASE COAT
- OMEGA AKROFLEX PRIMER (OPTIONAL) AND FINISH
- INSULATION WHERE OCCURS

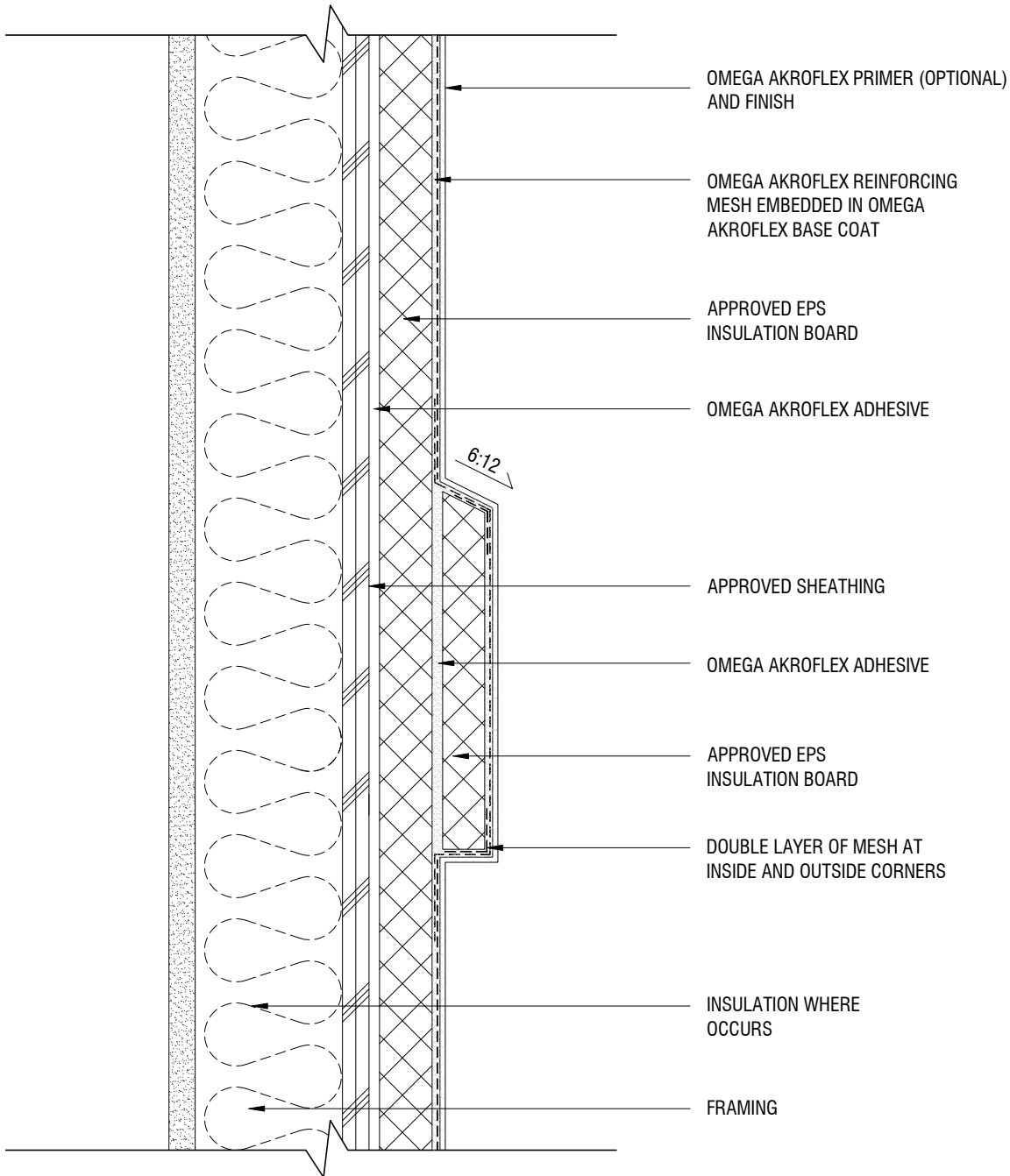
THE ARCHITECTURE, ENGINEERING, AND DESIGN OF THE PROJECT USING OMEGA PRODUCTS IS THE RESPONSIBILITY OF THE PROJECT'S DESIGN PROFESSIONAL. ALL SYSTEMS MUST COMPLY WITH LOCAL BUILDING CODES AND STANDARDS. THIS DETAIL IS FOR GENERAL INFORMATION AND GUIDANCE ONLY, AND OMEGA INC. SPECIFICALLY DISCLAIMS ANY LIABILITY FOR THE USE OF THIS DETAIL AND FOR THE ARCHITECTURE, DESIGN, ENGINEERING, OR WORKMANSHIP OF ANY PROJECT. THE PROJECT DESIGN PROFESSIONAL DETERMINES, IN ITS SOLE DISCRETION, WHETHER THIS DETAIL OR A FUNCTIONALLY EQUIVALENT ALTERNATIVE IS BEST SUITED FOR THE THE PROJECT. USE OF A FUNCTIONALLY EQUIVALENT DETAIL DOES NOT VIOLATE OMEGA'S WARRANTY. THIS DETAIL IS SUBJECT TO CHANGE WITHOUT NOTICE. CONTACT OMEGA TO INSURE YOU HAVE THE MOST RECENT VERSION.



CORPORATE OFFICE  
 1681 CALIFORNIA AVE., CORONA, CA 92881  
 E-MAIL: INFO@OMEGA-PRODUCTS.COM  
 WEBSITE: WWW.OMEGA-PRODUCTS.COM

**AKROFLEX BARRIER  
 EIFS DETAIL**

**TYPICAL AESTHETIC REVEAL**



THE ARCHITECTURE, ENGINEERING, AND DESIGN OF THE PROJECT USING OMEGA PRODUCTS IS THE RESPONSIBILITY OF THE PROJECT'S DESIGN PROFESSIONAL. ALL SYSTEMS MUST COMPLY WITH LOCAL BUILDING CODES AND STANDARDS. THIS DETAIL IS FOR GENERAL INFORMATION AND GUIDANCE ONLY, AND OMEGA INC. SPECIFICALLY DISCLAIMS ANY LIABILITY FOR THE USE OF THIS DETAIL AND FOR THE ARCHITECTURE, DESIGN, ENGINEERING, OR WORKMANSHIP OF ANY PROJECT. THE PROJECT DESIGN PROFESSIONAL DETERMINES, IN ITS SOLE DISCRETION, WHETHER THIS DETAIL OR A FUNCTIONALLY EQUIVALENT ALTERNATIVE IS BEST SUITED FOR THE THE PROJECT. USE OF A FUNCTIONALLY EQUIVALENT DETAIL DOES NOT VIOLATE OMEGA'S WARRANTY. THIS DETAIL IS SUBJECT TO CHANGE WITHOUT NOTICE. CONTACT OMEGA TO INSURE YOU HAVE THE MOST RECENT VERSION.



CORPORATE OFFICE  
 1681 CALIFORNIA AVE., CORONA, CA 92881  
 E-MAIL: INFO@OMEGA-PRODUCTS.COM  
 WEBSITE: WWW.OMEGA-PRODUCTS.COM

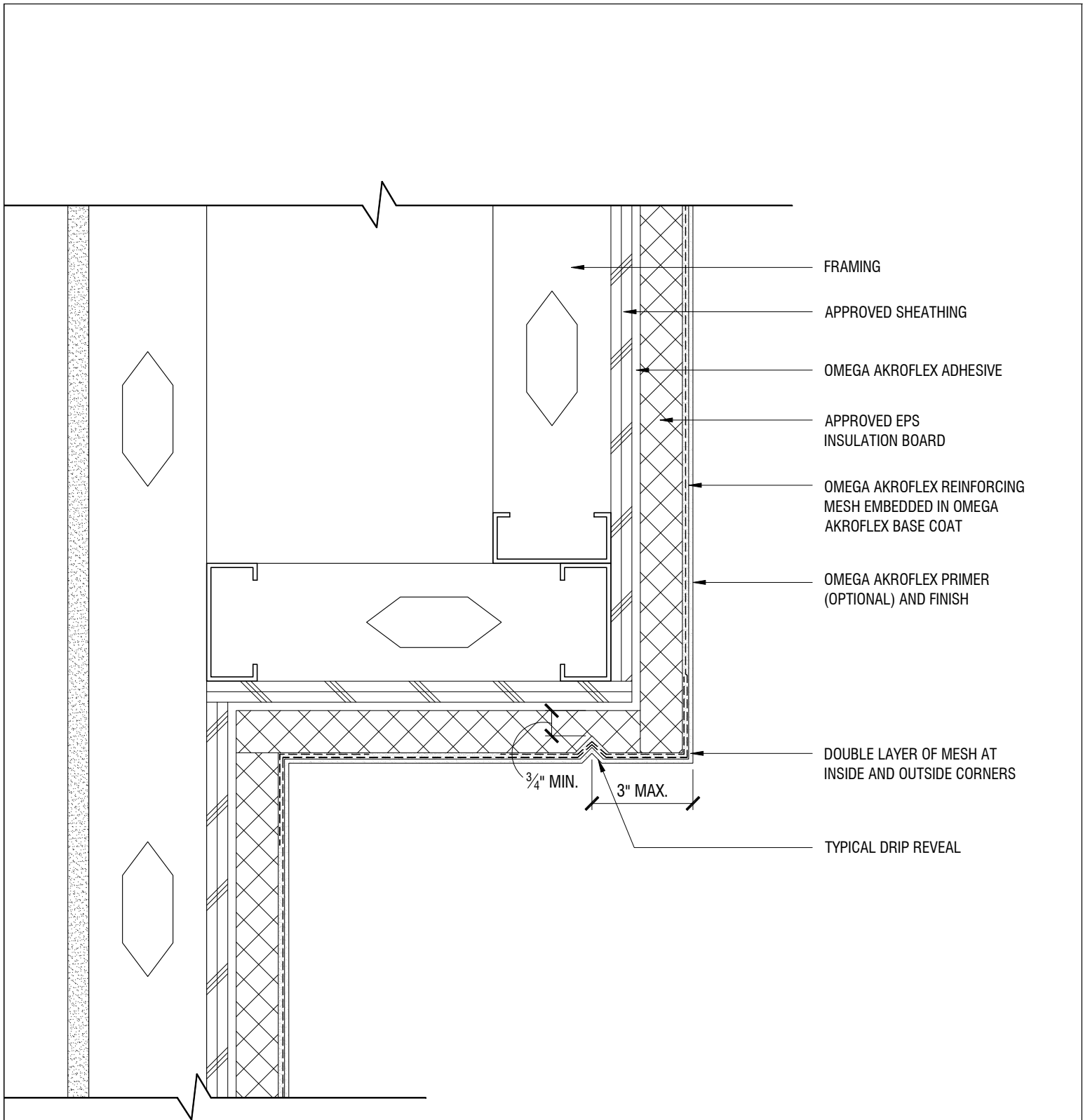
## AKROFLEX BARRIER EIFS DETAIL

### TYPICAL AESTHETIC PLANT-ON

SCALE: 3"=1'-0"

DRAWING NO.: APB 06.00

DRAWN: JUNE 2009



- FRAMING
- APPROVED SHEATHING
- OMEGA AKROFLEX ADHESIVE
- APPROVED EPS INSULATION BOARD
- OMEGA AKROFLEX REINFORCING MESH EMBEDDED IN OMEGA AKROFLEX BASE COAT
- OMEGA AKROFLEX PRIMER (OPTIONAL) AND FINISH

DOUBLE LAYER OF MESH AT INSIDE AND OUTSIDE CORNERS

3/4" MIN. 3" MAX.

TYPICAL DRIP REVEAL

THE ARCHITECTURE, ENGINEERING, AND DESIGN OF THE PROJECT USING OMEGA PRODUCTS IS THE RESPONSIBILITY OF THE PROJECT'S DESIGN PROFESSIONAL. ALL SYSTEMS MUST COMPLY WITH LOCAL BUILDING CODES AND STANDARDS. THIS DETAIL IS FOR GENERAL INFORMATION AND GUIDANCE ONLY, AND OMEGA INC. SPECIFICALLY DISCLAIMS ANY LIABILITY FOR THE USE OF THIS DETAIL AND FOR THE ARCHITECTURE, DESIGN, ENGINEERING, OR WORKMANSHIP OF ANY PROJECT. THE PROJECT DESIGN PROFESSIONAL DETERMINES, IN ITS SOLE DISCRETION, WHETHER THIS DETAIL OR A FUNCTIONALLY EQUIVALENT ALTERNATIVE IS BEST SUITED FOR THE THE PROJECT. USE OF A FUNCTIONALLY EQUIVALENT DETAIL DOES NOT VIOLATE OMEGA'S WARRANTY. THIS DETAIL IS SUBJECT TO CHANGE WITHOUT NOTICE. CONTACT OMEGA TO INSURE YOU HAVE THE MOST RECENT VERSION.

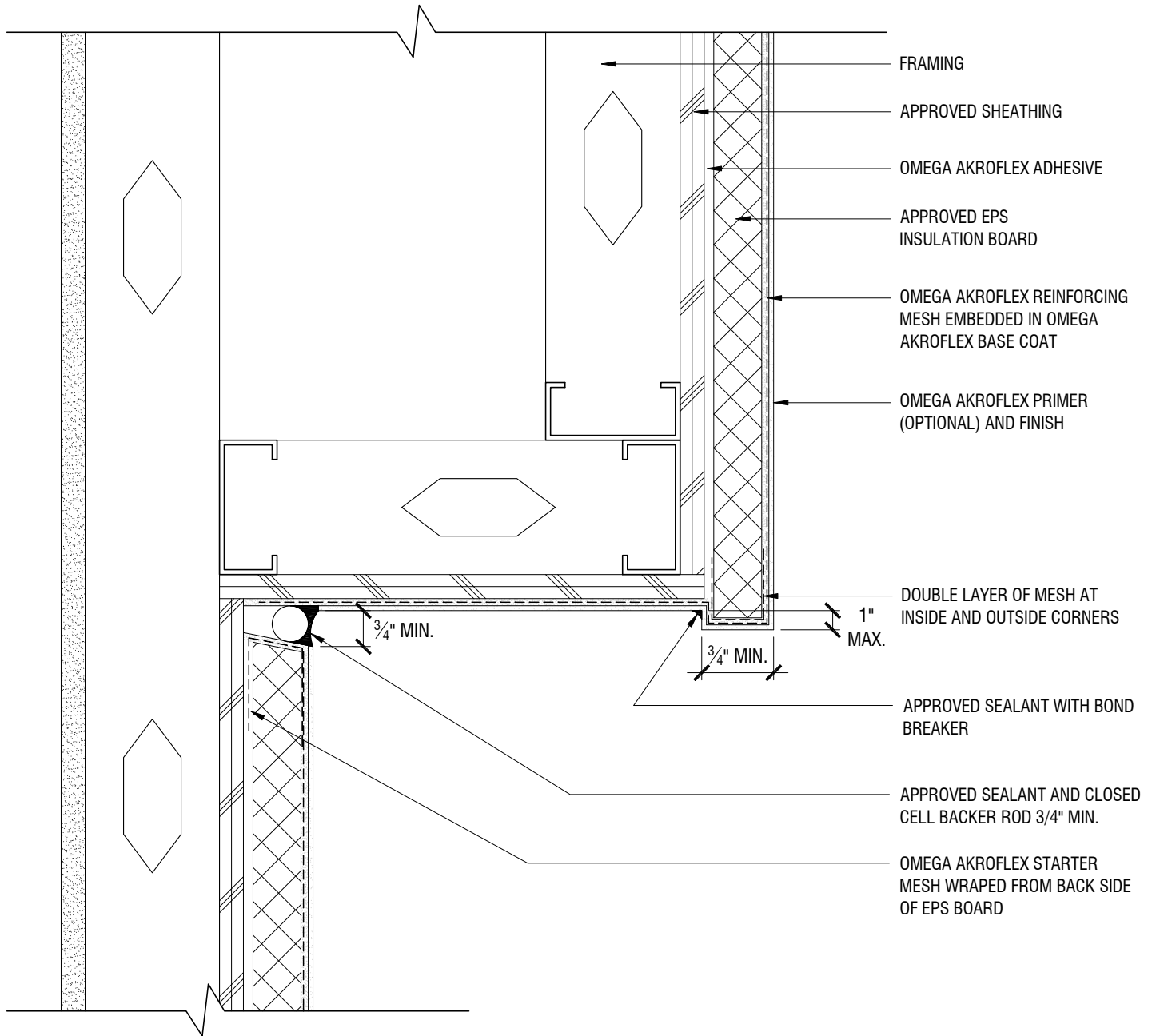


CORPORATE OFFICE  
 1681 CALIFORNIA AVE., CORONA, CA 92881  
 E-MAIL: INFO@OMEGA-PRODUCTS.COM  
 WEBSITE: WWW.OMEGA-PRODUCTS.COM

## AKROFLEX BARRIER EIFS DETAIL

### TYPICAL SOFFIT DETAIL WITH DRIP REVEAL





THE ARCHITECTURE, ENGINEERING, AND DESIGN OF THE PROJECT USING OMEGA PRODUCTS IS THE RESPONSIBILITY OF THE PROJECT'S DESIGN PROFESSIONAL. ALL SYSTEMS MUST COMPLY WITH LOCAL BUILDING CODES AND STANDARDS. THIS DETAIL IS FOR GENERAL INFORMATION AND GUIDANCE ONLY, AND OMEGA INC. SPECIFICALLY DISCLAIMS ANY LIABILITY FOR THE USE OF THIS DETAIL AND FOR THE ARCHITECTURE, DESIGN, ENGINEERING, OR WORKMANSHIP OF ANY PROJECT. THE PROJECT DESIGN PROFESSIONAL DETERMINES, IN ITS SOLE DISCRETION, WHETHER THIS DETAIL OR A FUNCTIONALLY EQUIVALENT ALTERNATIVE IS BEST SUITED FOR THE THE PROJECT. USE OF A FUNCTIONALLY EQUIVALENT DETAIL DOES NOT VIOLATE OMEGA'S WARRANTY. THIS DETAIL IS SUBJECT TO CHANGE WITHOUT NOTICE. CONTACT OMEGA TO INSURE YOU HAVE THE MOST RECENT VERSION.



CORPORATE OFFICE  
 1681 CALIFORNIA AVE., CORONA, CA 92881  
 E-MAIL: INFO@OMEGA-PRODUCTS.COM  
 WEBSITE: WWW.OMEGA-PRODUCTS.COM

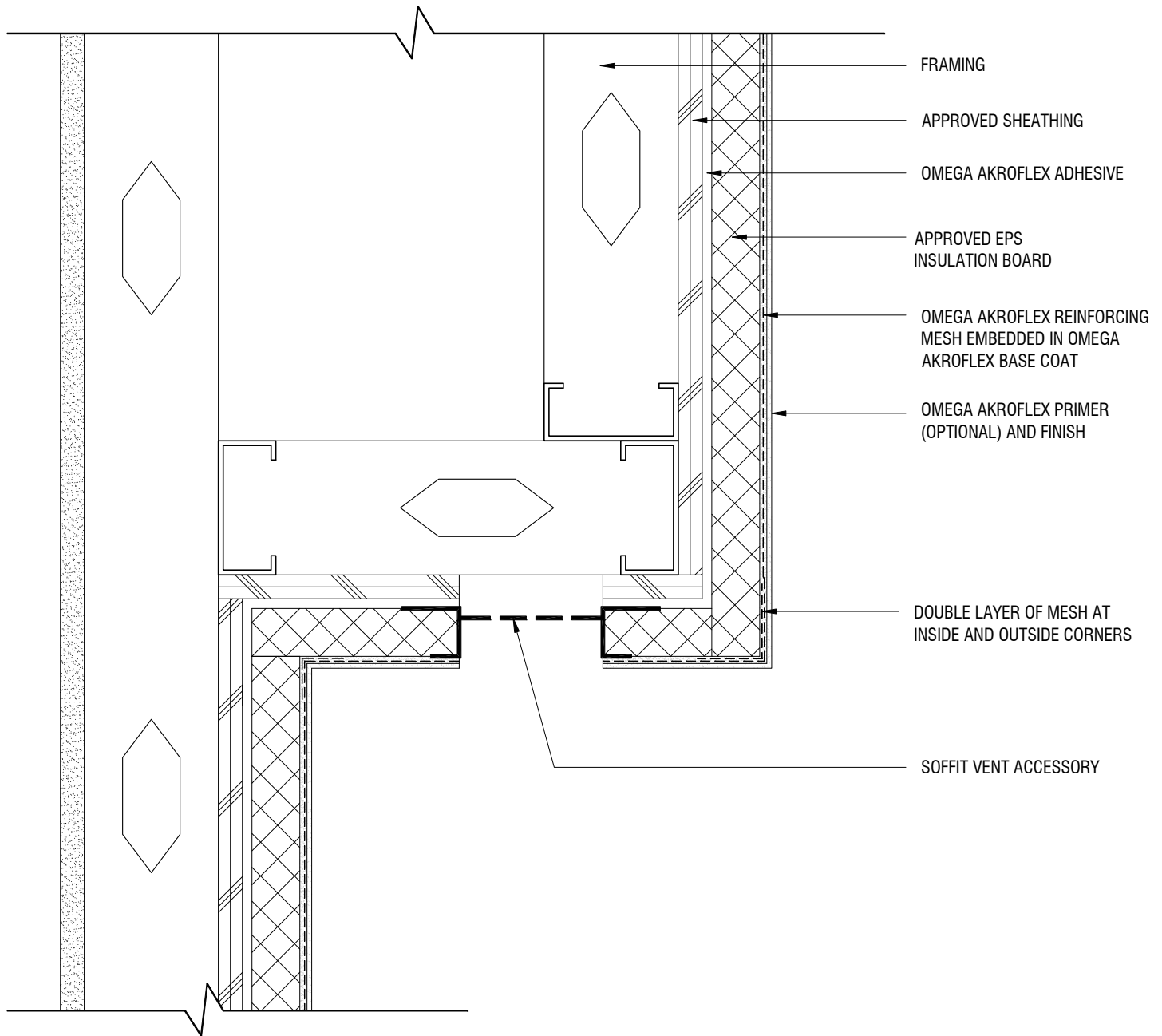
## AKROFLEX BARRIER EIFS DETAIL

### TYPICAL DIRECT APPLIED SOFFIT DETAIL

SCALE: 3"=1'-0"

DRAWING NO.: APB 08.00

DRAWN: JUNE 2009



- FRAMING
- APPROVED SHEATHING
- OMEGA AKROFLEX ADHESIVE
- APPROVED EPS INSULATION BOARD
- OMEGA AKROFLEX REINFORCING MESH EMBEDDED IN OMEGA AKROFLEX BASE COAT
- OMEGA AKROFLEX PRIMER (OPTIONAL) AND FINISH
- DOUBLE LAYER OF MESH AT INSIDE AND OUTSIDE CORNERS
- SOFFIT VENT ACCESSORY

THE ARCHITECTURE, ENGINEERING, AND DESIGN OF THE PROJECT USING OMEGA PRODUCTS IS THE RESPONSIBILITY OF THE PROJECT'S DESIGN PROFESSIONAL. ALL SYSTEMS MUST COMPLY WITH LOCAL BUILDING CODES AND STANDARDS. THIS DETAIL IS FOR GENERAL INFORMATION AND GUIDANCE ONLY, AND OMEGA INC. SPECIFICALLY DISCLAIMS ANY LIABILITY FOR THE USE OF THIS DETAIL AND FOR THE ARCHITECTURE, DESIGN, ENGINEERING, OR WORKMANSHIP OF ANY PROJECT. THE PROJECT DESIGN PROFESSIONAL DETERMINES, IN ITS SOLE DISCRETION, WHETHER THIS DETAIL OR A FUNCTIONALLY EQUIVALENT ALTERNATIVE IS BEST SUITED FOR THE THE PROJECT. USE OF A FUNCTIONALLY EQUIVALENT DETAIL DOES NOT VIOLATE OMEGA'S WARRANTY. THIS DETAIL IS SUBJECT TO CHANGE WITHOUT NOTICE. CONTACT OMEGA TO INSURE YOU HAVE THE MOST RECENT VERSION.



CORPORATE OFFICE  
 1681 CALIFORNIA AVE., CORONA, CA 92881  
 E-MAIL: [INFO@OMEGA-PRODUCTS.COM](mailto:INFO@OMEGA-PRODUCTS.COM)  
 WEBSITE: [WWW.OMEGA-PRODUCTS.COM](http://WWW.OMEGA-PRODUCTS.COM)

## AKROFLEX BARRIER EIFS DETAIL

### TYPICAL SOFFIT VENT DETAIL

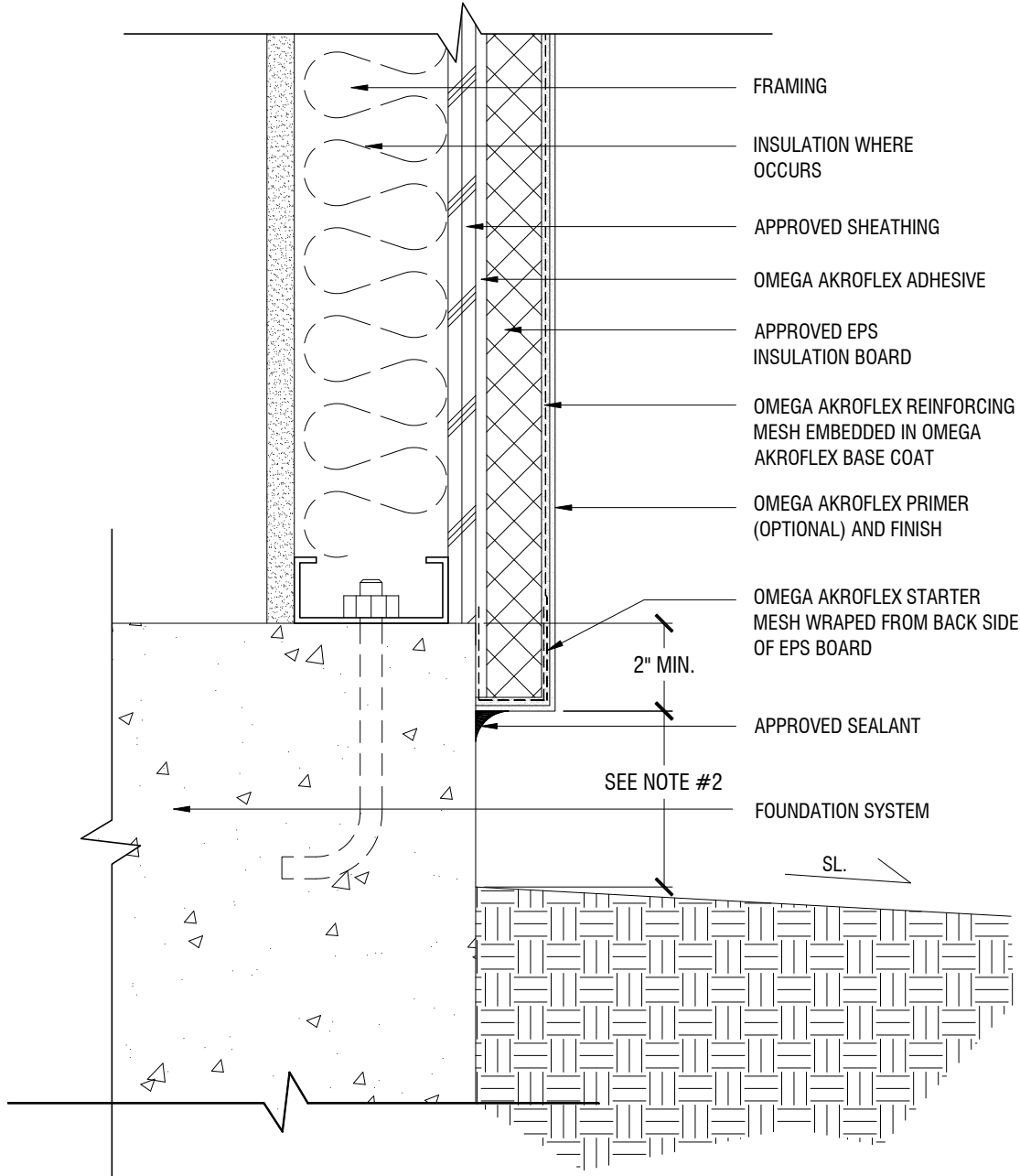
SCALE: 3"=1'-0"

DRAWING NO.: APB 09.00

DRAWN: JUNE 2009

## NOTES

1. OPTIONAL VINYL ACCESSORY MAY BE USED
2. 8" MIN. ABOVE GRADE, 6" MIN. ABOVE PAVED SURFACES/HARDSCAPE, OR AS SPECIFIED BY LOCAL CODE



THE ARCHITECTURE, ENGINEERING, AND DESIGN OF THE PROJECT USING OMEGA PRODUCTS IS THE RESPONSIBILITY OF THE PROJECT'S DESIGN PROFESSIONAL. ALL SYSTEMS MUST COMPLY WITH LOCAL BUILDING CODES AND STANDARDS. THIS DETAIL IS FOR GENERAL INFORMATION AND GUIDANCE ONLY, AND OMEGA INC. SPECIFICALLY DISCLAIMS ANY LIABILITY FOR THE USE OF THIS DETAIL AND FOR THE ARCHITECTURE, DESIGN, ENGINEERING, OR WORKMANSHIP OF ANY PROJECT. THE PROJECT DESIGN PROFESSIONAL DETERMINES, IN ITS SOLE DISCRETION, WHETHER THIS DETAIL OR A FUNCTIONALLY EQUIVALENT ALTERNATIVE IS BEST SUITED FOR THE THE PROJECT. USE OF A FUNCTIONALLY EQUIVALENT DETAIL DOES NOT VIOLATE OMEGA'S WARRANTY. THIS DETAIL IS SUBJECT TO CHANGE WITHOUT NOTICE. CONTACT OMEGA TO INSURE YOU HAVE THE MOST RECENT VERSION.



CORPORATE OFFICE  
1681 CALIFORNIA AVE., CORONA, CA 92881  
E-MAIL: [INFO@OMEGA-PRODUCTS.COM](mailto:INFO@OMEGA-PRODUCTS.COM)  
WEBSITE: [WWW.OMEGA-PRODUCTS.COM](http://WWW.OMEGA-PRODUCTS.COM)

## AKROFLEX BARRIER EIFS DETAIL

### TYPICAL TERMINATION AT FOUNDATION

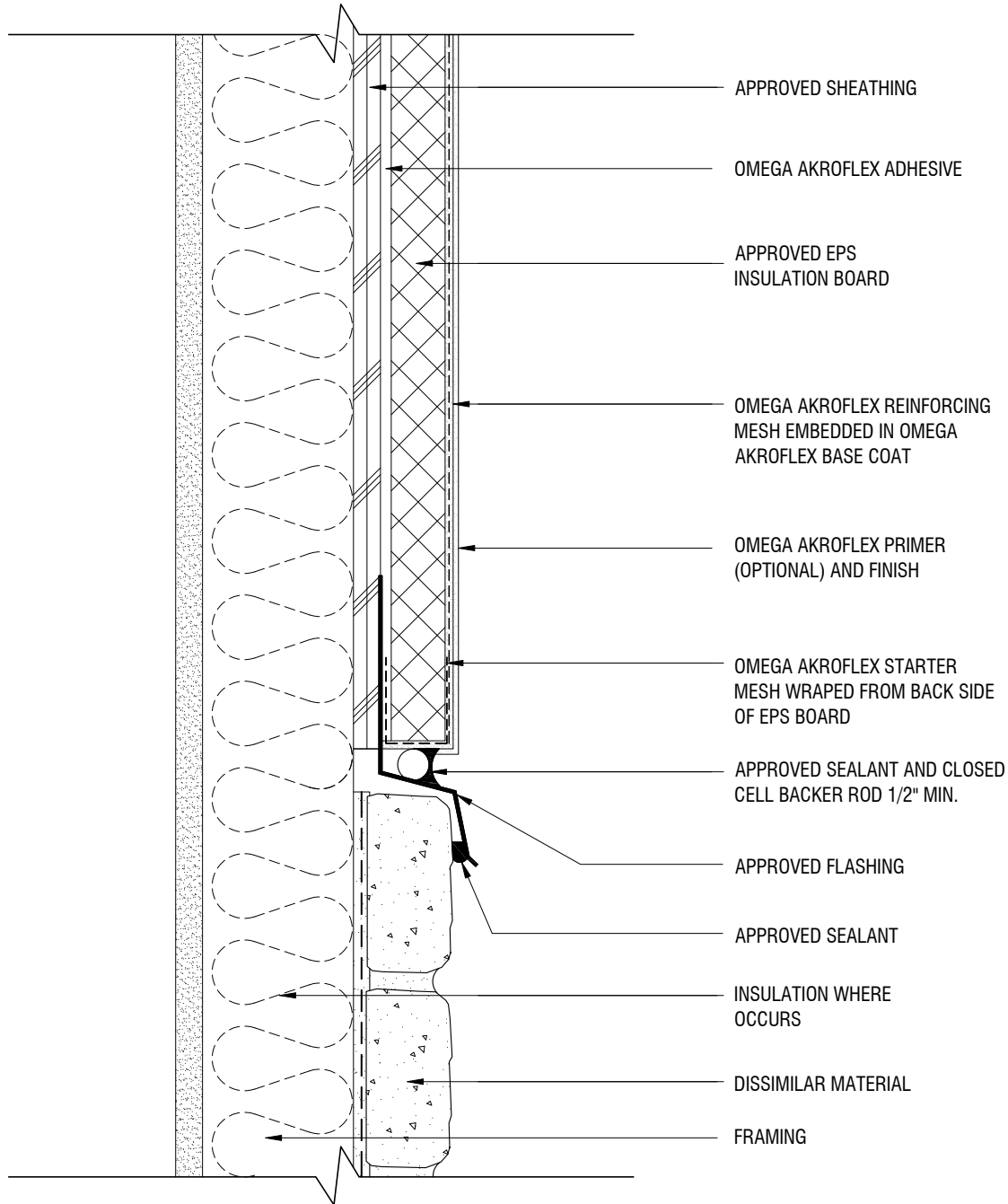
SCALE: 3"=1'-0"

DRAWING NO.: APB 10.00

DRAWN: JUNE 2009

**NOTES**

1. OPTIONAL VINYL ACCESSORY MAY BE USED



THE ARCHITECTURE, ENGINEERING, AND DESIGN OF THE PROJECT USING OMEGA PRODUCTS IS THE RESPONSIBILITY OF THE PROJECT'S DESIGN PROFESSIONAL. ALL SYSTEMS MUST COMPLY WITH LOCAL BUILDING CODES AND STANDARDS. THIS DETAIL IS FOR GENERAL INFORMATION AND GUIDANCE ONLY, AND OMEGA INC. SPECIFICALLY DISCLAIMS ANY LIABILITY FOR THE USE OF THIS DETAIL AND FOR THE ARCHITECTURE, DESIGN, ENGINEERING, OR WORKMANSHIP OF ANY PROJECT. THE PROJECT DESIGN PROFESSIONAL DETERMINES, IN ITS SOLE DISCRETION, WHETHER THIS DETAIL OR A FUNCTIONALLY EQUIVALENT ALTERNATIVE IS BEST SUITED FOR THE THE PROJECT. USE OF A FUNCTIONALLY EQUIVALENT DETAIL DOES NOT VIOLATE OMEGA'S WARRANTY. THIS DETAIL IS SUBJECT TO CHANGE WITHOUT NOTICE. CONTACT OMEGA TO INSURE YOU HAVE THE MOST RECENT VERSION.



CORPORATE OFFICE  
 1681 CALIFORNIA AVE., CORONA, CA 92881  
 E-MAIL: [INFO@OMEGA-PRODUCTS.COM](mailto:INFO@OMEGA-PRODUCTS.COM)  
 WEBSITE: [WWW.OMEGA-PRODUCTS.COM](http://WWW.OMEGA-PRODUCTS.COM)

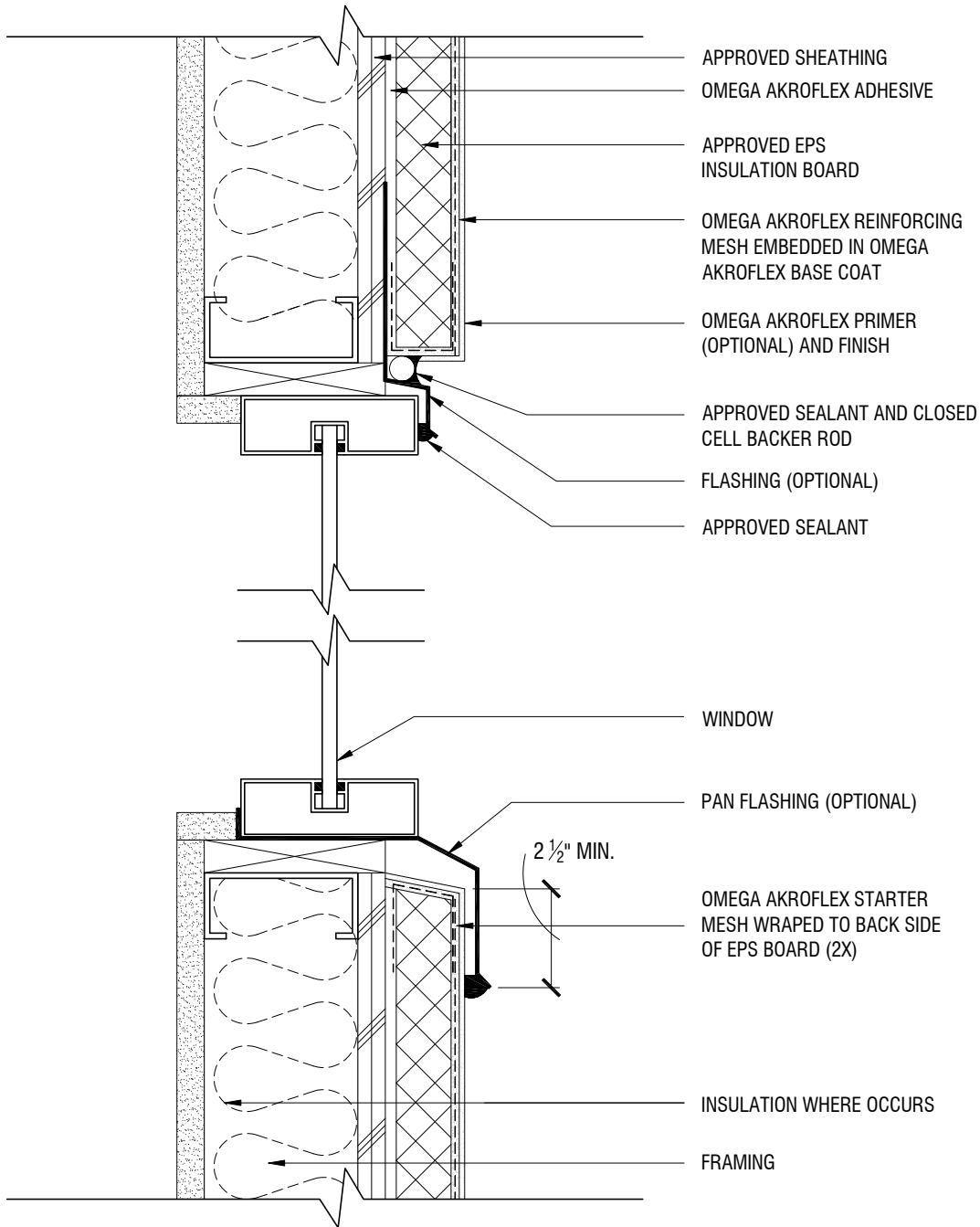
**AKROFLEX BARRIER  
EIFS DETAIL**

**TYPICAL TERMINATION AT  
DISSIMILAR MATERIALS**

SCALE: 3"=1'-0"

DRAWING NO.: APB 11.00

DRAWN: JUNE 2009



THE ARCHITECTURE, ENGINEERING, AND DESIGN OF THE PROJECT USING OMEGA PRODUCTS IS THE RESPONSIBILITY OF THE PROJECT'S DESIGN PROFESSIONAL. ALL SYSTEMS MUST COMPLY WITH LOCAL BUILDING CODES AND STANDARDS. THIS DETAIL IS FOR GENERAL INFORMATION AND GUIDANCE ONLY, AND OMEGA INC. SPECIFICALLY DISCLAIMS ANY LIABILITY FOR THE USE OF THIS DETAIL AND FOR THE ARCHITECTURE, DESIGN, ENGINEERING, OR WORKMANSHIP OF ANY PROJECT. THE PROJECT DESIGN PROFESSIONAL DETERMINES, IN ITS SOLE DISCRETION, WHETHER THIS DETAIL OR A FUNCTIONALLY EQUIVALENT ALTERNATIVE IS BEST SUITED FOR THE THE PROJECT. USE OF A FUNCTIONALLY EQUIVALENT DETAIL DOES NOT VIOLATE OMEGA'S WARRANTY. THIS DETAIL IS SUBJECT TO CHANGE WITHOUT NOTICE. CONTACT OMEGA TO INSURE YOU HAVE THE MOST RECENT VERSION.



CORPORATE OFFICE  
 1681 CALIFORNIA AVE., CORONA, CA 92881  
 E-MAIL: [INFO@OMEGA-PRODUCTS.COM](mailto:INFO@OMEGA-PRODUCTS.COM)  
 WEBSITE: [WWW.OMEGA-PRODUCTS.COM](http://WWW.OMEGA-PRODUCTS.COM)

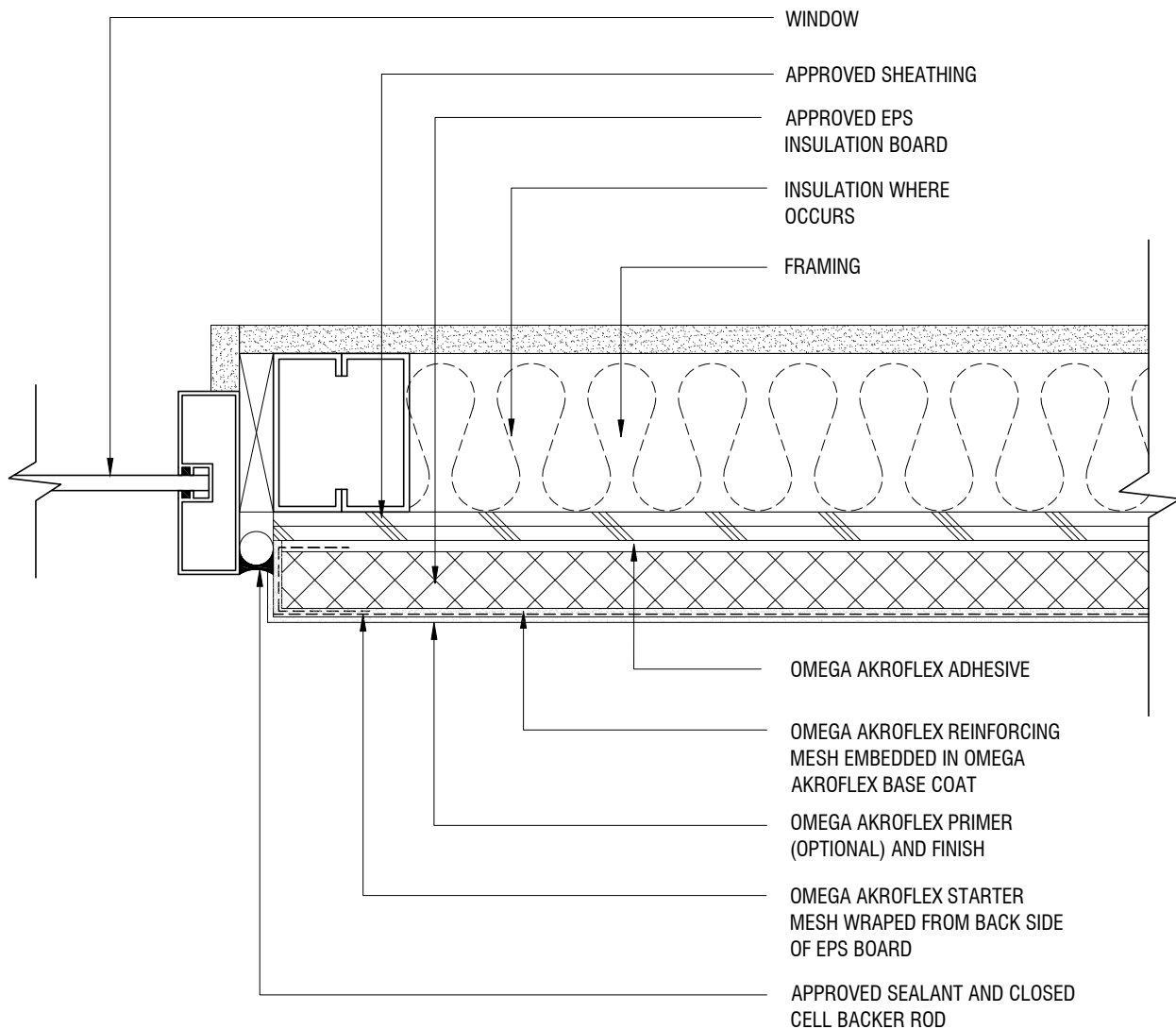
## AKROFLEX BARRIER EIFS DETAIL

### TYPICAL TERMINATION AT WINDOW HEAD AND SILL

SCALE: 3"=1'-0"

DRAWING NO.: APB 12.00

DRAWN: FEBRUARY 2013



THE ARCHITECTURE, ENGINEERING, AND DESIGN OF THE PROJECT USING OMEGA PRODUCTS IS THE RESPONSIBILITY OF THE PROJECT'S DESIGN PROFESSIONAL. ALL SYSTEMS MUST COMPLY WITH LOCAL BUILDING CODES AND STANDARDS. THIS DETAIL IS FOR GENERAL INFORMATION AND GUIDANCE ONLY, AND OMEGA INC. SPECIFICALLY DISCLAIMS ANY LIABILITY FOR THE USE OF THIS DETAIL AND FOR THE ARCHITECTURE, DESIGN, ENGINEERING, OR WORKMANSHIP OF ANY PROJECT. THE PROJECT DESIGN PROFESSIONAL DETERMINES, IN ITS SOLE DISCRETION, WHETHER THIS DETAIL OR A FUNCTIONALLY EQUIVALENT ALTERNATIVE IS BEST SUITED FOR THE THE PROJECT. USE OF A FUNCTIONALLY EQUIVALENT DETAIL DOES NOT VIOLATE OMEGA'S WARRANTY. THIS DETAIL IS SUBJECT TO CHANGE WITHOUT NOTICE. CONTACT OMEGA TO INSURE YOU HAVE THE MOST RECENT VERSION.



CORPORATE OFFICE  
 1681 CALIFORNIA AVE., CORONA, CA 92881  
 E-MAIL: [INFO@OMEGA-PRODUCTS.COM](mailto:INFO@OMEGA-PRODUCTS.COM)  
 WEBSITE: [WWW.OMEGA-PRODUCTS.COM](http://WWW.OMEGA-PRODUCTS.COM)

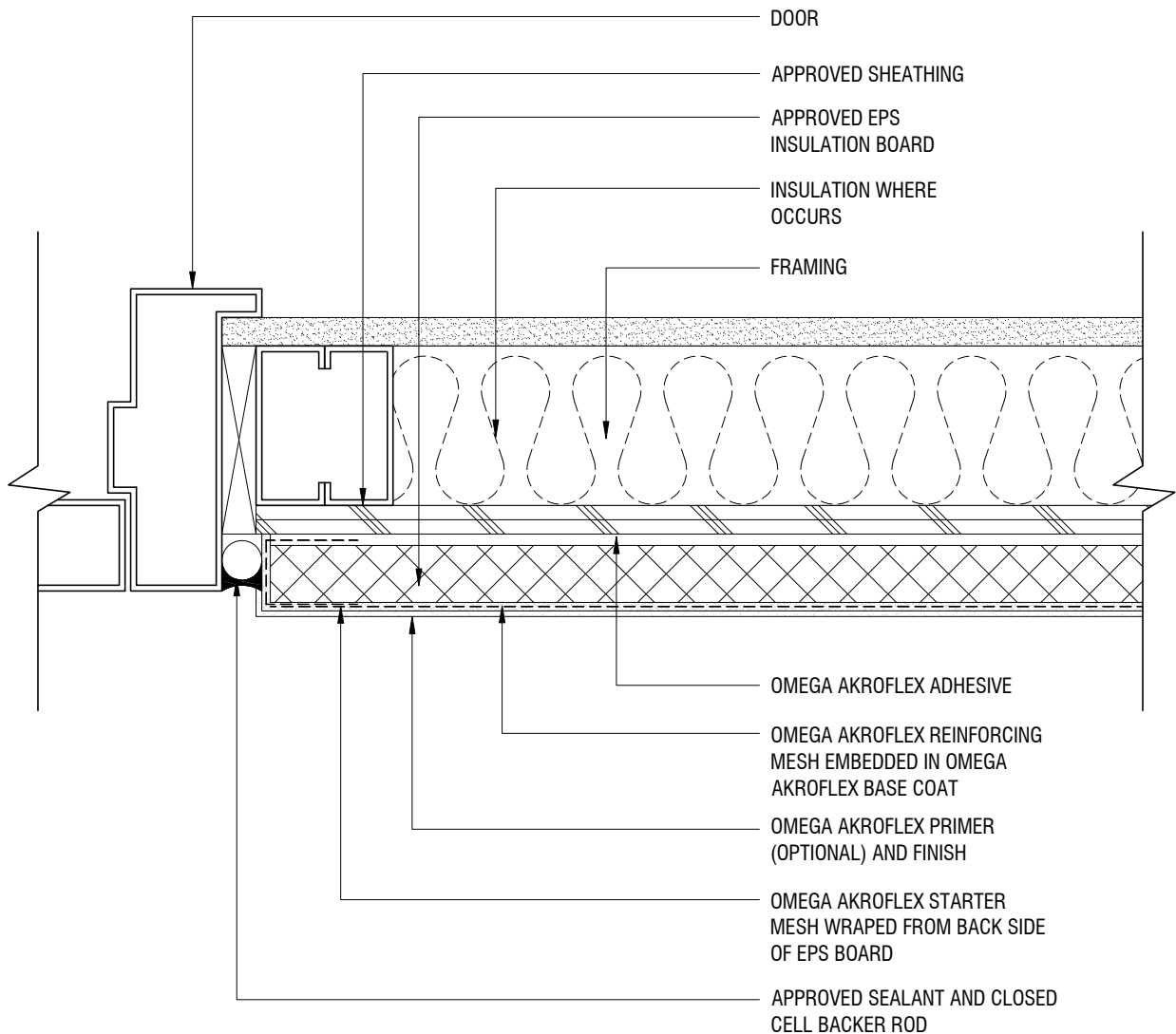
## AKROFLEX BARRIER EIFS DETAIL

### TYPICAL TERMINATION AT WINDOW JAMB

SCALE: 3"=1'-0"

DRAWING NO.: APB 13.00

DRAWN: JUNE 2009



THE ARCHITECTURE, ENGINEERING, AND DESIGN OF THE PROJECT USING OMEGA PRODUCTS IS THE RESPONSIBILITY OF THE PROJECT'S DESIGN PROFESSIONAL. ALL SYSTEMS MUST COMPLY WITH LOCAL BUILDING CODES AND STANDARDS. THIS DETAIL IS FOR GENERAL INFORMATION AND GUIDANCE ONLY, AND OMEGA INC. SPECIFICALLY DISCLAIMS ANY LIABILITY FOR THE USE OF THIS DETAIL AND FOR THE ARCHITECTURE, DESIGN, ENGINEERING, OR WORKMANSHIP OF ANY PROJECT. THE PROJECT DESIGN PROFESSIONAL DETERMINES, IN ITS SOLE DISCRETION, WHETHER THIS DETAIL OR A FUNCTIONALLY EQUIVALENT ALTERNATIVE IS BEST SUITED FOR THE THE PROJECT. USE OF A FUNCTIONALLY EQUIVALENT DETAIL DOES NOT VIOLATE OMEGA'S WARRANTY. THIS DETAIL IS SUBJECT TO CHANGE WITHOUT NOTICE. CONTACT OMEGA TO INSURE YOU HAVE THE MOST RECENT VERSION.



CORPORATE OFFICE  
 1681 CALIFORNIA AVE., CORONA, CA 92881  
 E-MAIL: [INFO@OMEGA-PRODUCTS.COM](mailto:INFO@OMEGA-PRODUCTS.COM)  
 WEBSITE: [WWW.OMEGA-PRODUCTS.COM](http://WWW.OMEGA-PRODUCTS.COM)

## AKROFLEX BARRIER EIFS DETAIL

### TYPICAL TERMINATION AT DOOR JAMB

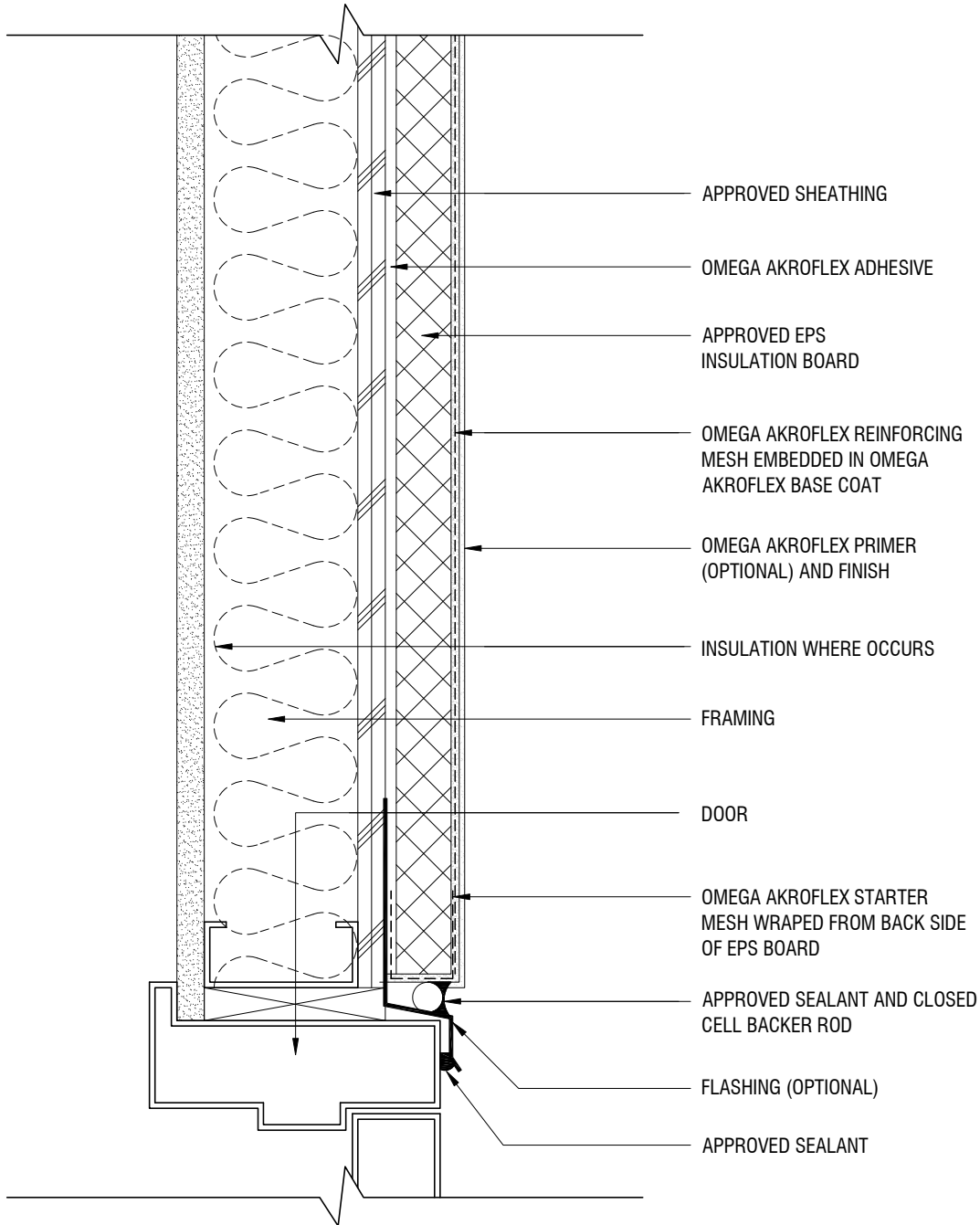
SCALE: 3"=1'-0"

DRAWING NO.: APB 14.00

DRAWN: JUNE 2009

**NOTES**

1. OPTIONAL VINYL ACCESSORY MAY BE USED



THE ARCHITECTURE, ENGINEERING, AND DESIGN OF THE PROJECT USING OMEGA PRODUCTS IS THE RESPONSIBILITY OF THE PROJECT'S DESIGN PROFESSIONAL. ALL SYSTEMS MUST COMPLY WITH LOCAL BUILDING CODES AND STANDARDS. THIS DETAIL IS FOR GENERAL INFORMATION AND GUIDANCE ONLY, AND OMEGA INC. SPECIFICALLY DISCLAIMS ANY LIABILITY FOR THE USE OF THIS DETAIL AND FOR THE ARCHITECTURE, DESIGN, ENGINEERING, OR WORKMANSHIP OF ANY PROJECT. THE PROJECT DESIGN PROFESSIONAL DETERMINES, IN ITS SOLE DISCRETION, WHETHER THIS DETAIL OR A FUNCTIONALLY EQUIVALENT ALTERNATIVE IS BEST SUITED FOR THE THE PROJECT. USE OF A FUNCTIONALLY EQUIVALENT DETAIL DOES NOT VIOLATE OMEGA'S WARRANTY. THIS DETAIL IS SUBJECT TO CHANGE WITHOUT NOTICE. CONTACT OMEGA TO INSURE YOU HAVE THE MOST RECENT VERSION.



CORPORATE OFFICE  
 1681 CALIFORNIA AVE., CORONA, CA 92881  
 E-MAIL: [INFO@OMEGA-PRODUCTS.COM](mailto:INFO@OMEGA-PRODUCTS.COM)  
 WEBSITE: [WWW.OMEGA-PRODUCTS.COM](http://WWW.OMEGA-PRODUCTS.COM)

**AKROFLEX BARRIER  
 EIFS DETAIL**

**TYPICAL TERMINATION AT  
 DOOR HEAD**

SCALE: 3"=1'-0"

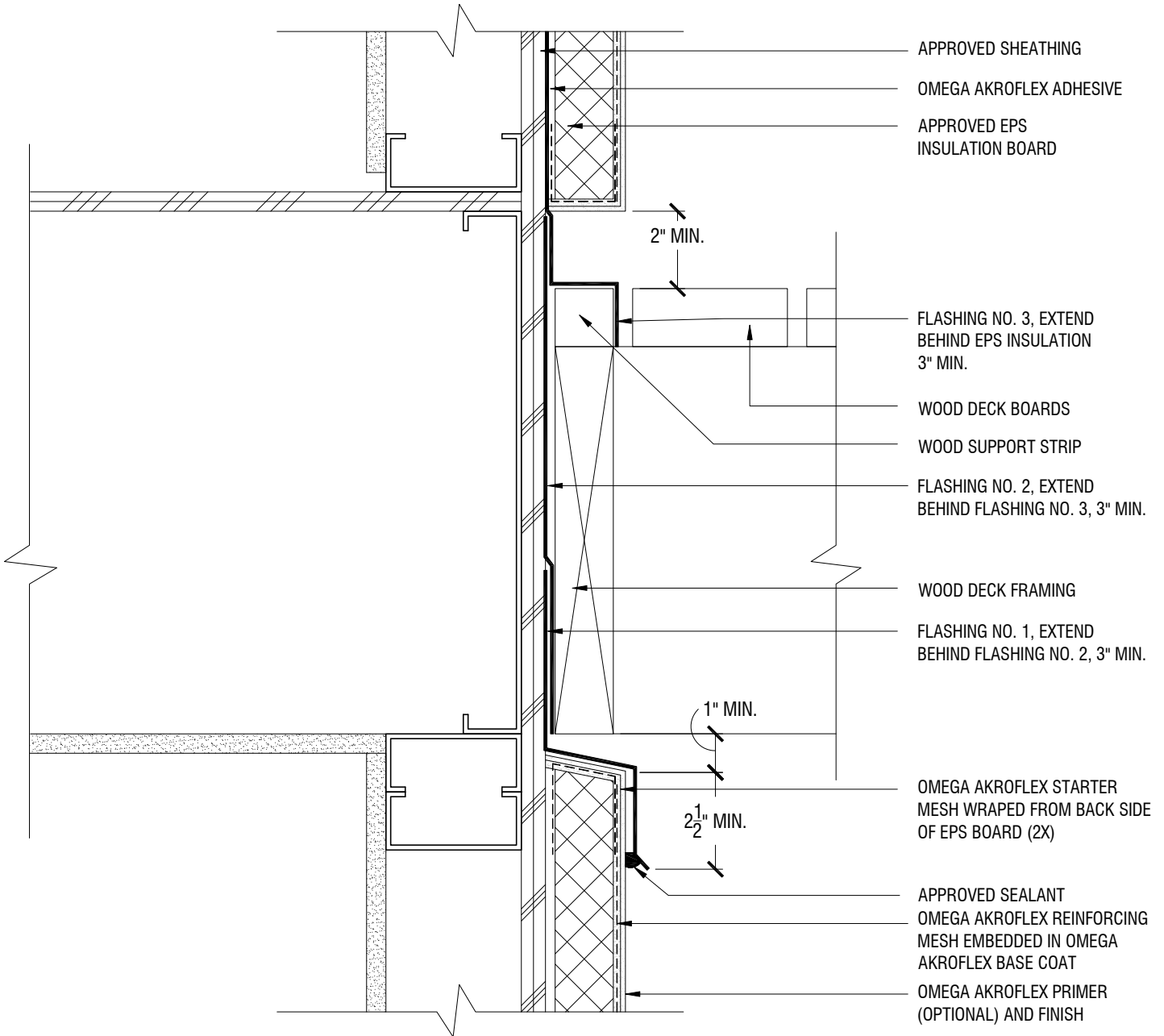
DRAWING NO.: APB 15.00

DRAWN: FEBRUARY 2013



## NOTES

1. OPTIONAL VINYL ACCESSORY MAY BE USED



THE ARCHITECTURE, ENGINEERING, AND DESIGN OF THE PROJECT USING OMEGA PRODUCTS IS THE RESPONSIBILITY OF THE PROJECT'S DESIGN PROFESSIONAL. ALL SYSTEMS MUST COMPLY WITH LOCAL BUILDING CODES AND STANDARDS. THIS DETAIL IS FOR GENERAL INFORMATION AND GUIDANCE ONLY, AND OMEGA INC. SPECIFICALLY DISCLAIMS ANY LIABILITY FOR THE USE OF THIS DETAIL AND FOR THE ARCHITECTURE, DESIGN, ENGINEERING, OR WORKMANSHIP OF ANY PROJECT. THE PROJECT DESIGN PROFESSIONAL DETERMINES, IN ITS SOLE DISCRETION, WHETHER THIS DETAIL OR A FUNCTIONALLY EQUIVALENT ALTERNATIVE IS BEST SUITED FOR THE THE PROJECT. USE OF A FUNCTIONALLY EQUIVALENT DETAIL DOES NOT VIOLATE OMEGA'S WARRANTY. THIS DETAIL IS SUBJECT TO CHANGE WITHOUT NOTICE. CONTACT OMEGA TO INSURE YOU HAVE THE MOST RECENT VERSION.



CORPORATE OFFICE  
1681 CALIFORNIA AVE., CORONA, CA 92881  
E-MAIL: [INFO@OMEGA-PRODUCTS.COM](mailto:INFO@OMEGA-PRODUCTS.COM)  
WEBSITE: [WWW.OMEGA-PRODUCTS.COM](http://WWW.OMEGA-PRODUCTS.COM)

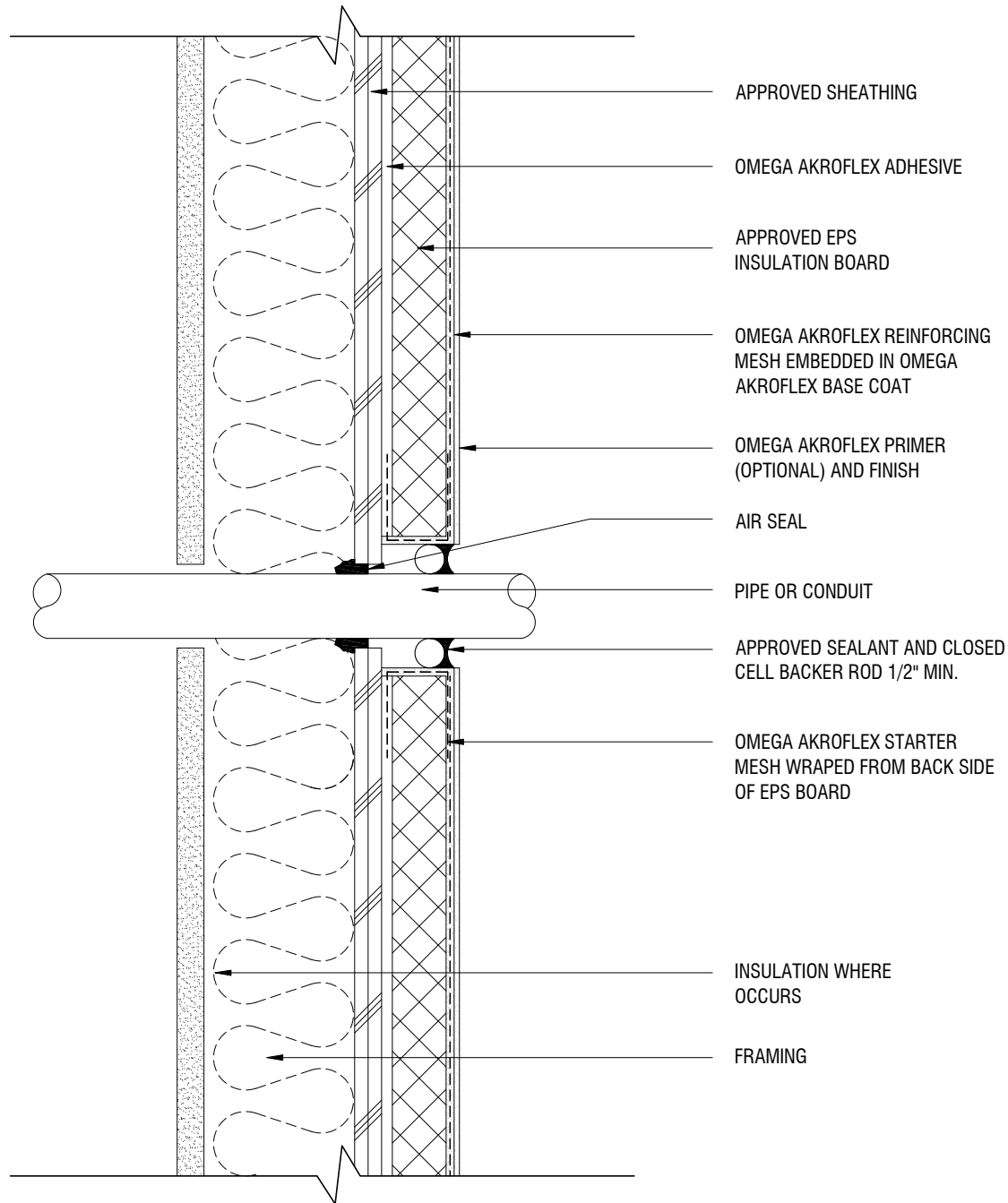
## AKROFLEX BARRIER EIFS DETAIL

### TYPICAL TERMINATION AT DECK

SCALE: 3"=1'-0"

DRAWING NO.: APB 16.00

DRAWN: FEBRUARY 2013



APPROVED SHEATHING

OMEGA AKROFLEX ADHESIVE

APPROVED EPS  
INSULATION BOARD

OMEGA AKROFLEX REINFORCING  
MESH EMBEDDED IN OMEGA  
AKROFLEX BASE COAT

OMEGA AKROFLEX PRIMER  
(OPTIONAL) AND FINISH

AIR SEAL

PIPE OR CONDUIT

APPROVED SEALANT AND CLOSED  
CELL BACKER ROD 1/2" MIN.

OMEGA AKROFLEX STARTER  
MESH WRAPED FROM BACK SIDE  
OF EPS BOARD

INSULATION WHERE  
OCCURS

FRAMING

THE ARCHITECTURE, ENGINEERING, AND DESIGN OF THE PROJECT USING OMEGA PRODUCTS IS THE RESPONSIBILITY OF THE PROJECT'S DESIGN PROFESSIONAL. ALL SYSTEMS MUST COMPLY WITH LOCAL BUILDING CODES AND STANDARDS. THIS DETAIL IS FOR GENERAL INFORMATION AND GUIDANCE ONLY, AND OMEGA INC. SPECIFICALLY DISCLAIMS ANY LIABILITY FOR THE USE OF THIS DETAIL AND FOR THE ARCHITECTURE, DESIGN, ENGINEERING, OR WORKMANSHIP OF ANY PROJECT. THE PROJECT DESIGN PROFESSIONAL DETERMINES, IN ITS SOLE DISCRETION, WHETHER THIS DETAIL OR A FUNCTIONALLY EQUIVALENT ALTERNATIVE IS BEST SUITED FOR THE THE PROJECT. USE OF A FUNCTIONALLY EQUIVALENT DETAIL DOES NOT VIOLATE OMEGA'S WARRANTY. THIS DETAIL IS SUBJECT TO CHANGE WITHOUT NOTICE. CONTACT OMEGA TO INSURE YOU HAVE THE MOST RECENT VERSION.



CORPORATE OFFICE  
1681 CALIFORNIA AVE., CORONA, CA 92881  
E-MAIL: [INFO@OMEGA-PRODUCTS.COM](mailto:INFO@OMEGA-PRODUCTS.COM)  
WEBSITE: [WWW.OMEGA-PRODUCTS.COM](http://WWW.OMEGA-PRODUCTS.COM)

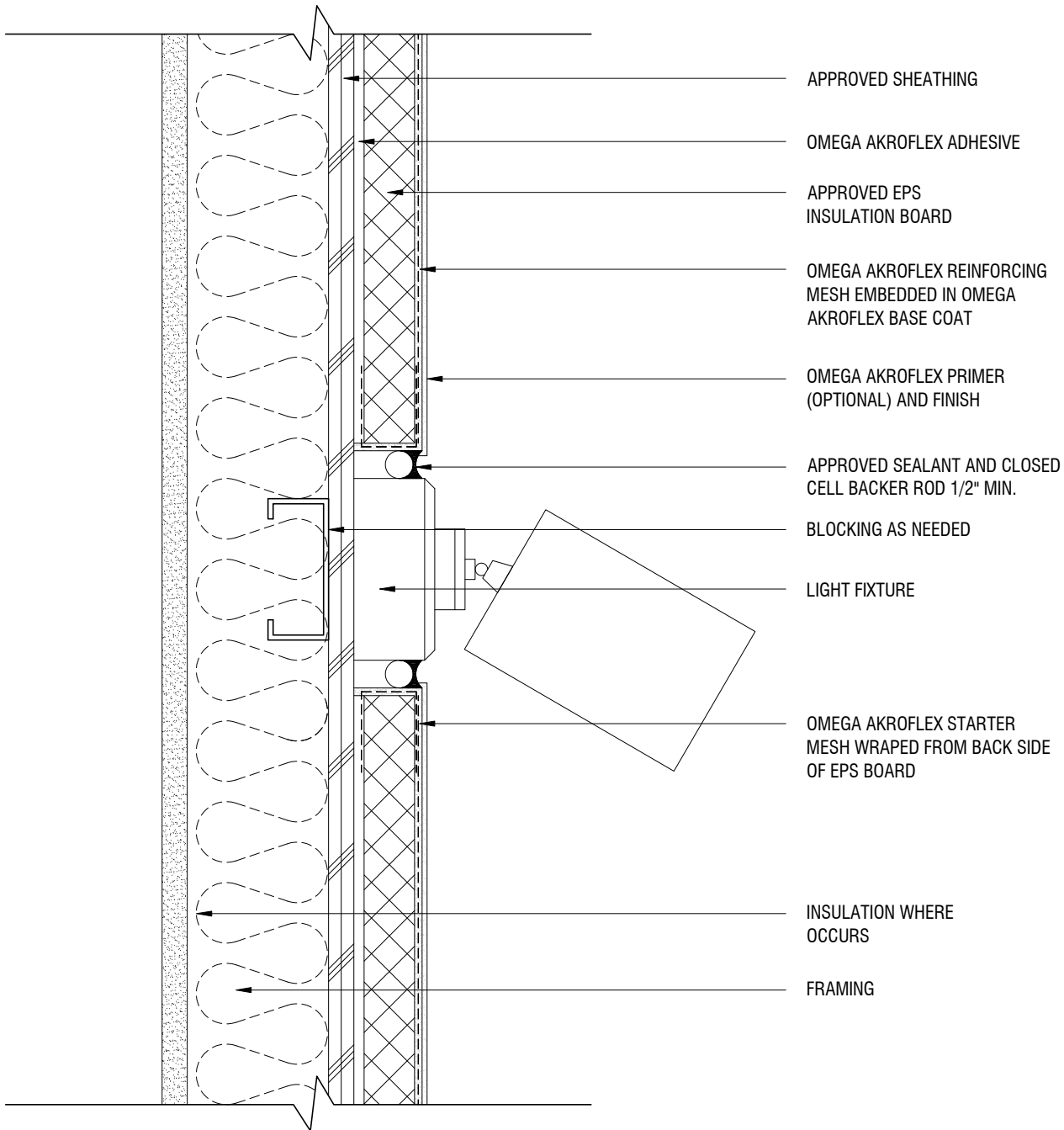
## AKROFLEX BARRIER EIFS DETAIL

### TYPICAL PIPE OR CONDUIT PENETRATION

SCALE: 3"=1'-0"

DRAWING NO.: APB 17.00

DRAWN: JUNE 2009



THE ARCHITECTURE, ENGINEERING, AND DESIGN OF THE PROJECT USING OMEGA PRODUCTS IS THE RESPONSIBILITY OF THE PROJECT'S DESIGN PROFESSIONAL. ALL SYSTEMS MUST COMPLY WITH LOCAL BUILDING CODES AND STANDARDS. THIS DETAIL IS FOR GENERAL INFORMATION AND GUIDANCE ONLY, AND OMEGA INC. SPECIFICALLY DISCLAIMS ANY LIABILITY FOR THE USE OF THIS DETAIL AND FOR THE ARCHITECTURE, DESIGN, ENGINEERING, OR WORKMANSHIP OF ANY PROJECT. THE PROJECT DESIGN PROFESSIONAL DETERMINES, IN ITS SOLE DISCRETION, WHETHER THIS DETAIL OR A FUNCTIONALLY EQUIVALENT ALTERNATIVE IS BEST SUITED FOR THE THE PROJECT. USE OF A FUNCTIONALLY EQUIVALENT DETAIL DOES NOT VIOLATE OMEGA'S WARRANTY. THIS DETAIL IS SUBJECT TO CHANGE WITHOUT NOTICE. CONTACT OMEGA TO INSURE YOU HAVE THE MOST RECENT VERSION.



CORPORATE OFFICE  
 1681 CALIFORNIA AVE., CORONA, CA 92881  
 E-MAIL: [INFO@OMEGA-PRODUCTS.COM](mailto:INFO@OMEGA-PRODUCTS.COM)  
 WEBSITE: [WWW.OMEGA-PRODUCTS.COM](http://WWW.OMEGA-PRODUCTS.COM)

## AKROFLEX BARRIER EIFS DETAIL

### TYPICAL LIGHT PENETRATION

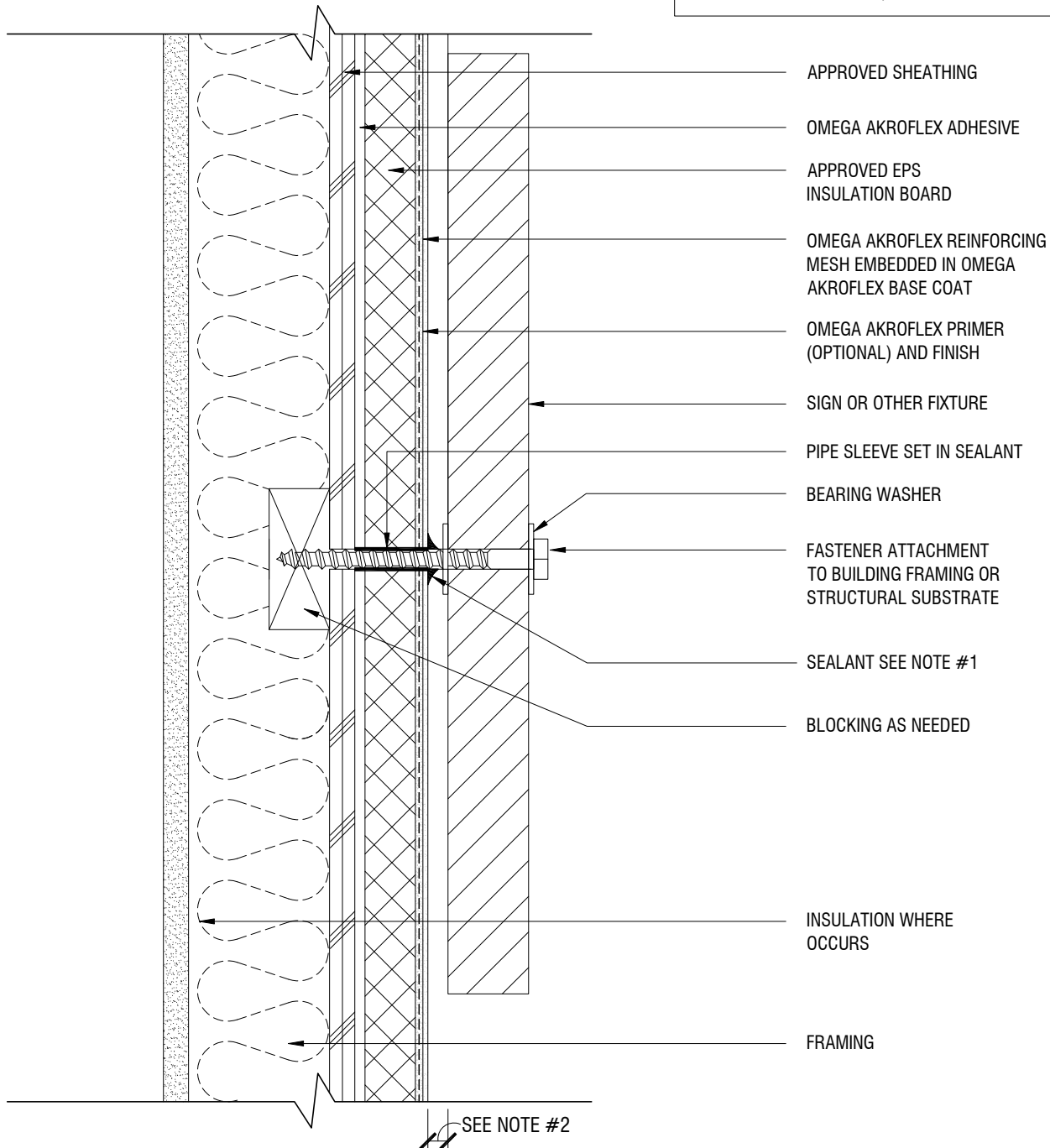
SCALE: 3"=1'-0"

DRAWING NO.: APB 18.00

DRAWN: JUNE 2009

## NOTES

1. PERIMETER OF PIPE SLEEVE IS CAULKED TO PREVENT WATER ENTRY INTO WALL
2. SIGNS AND OTHER ATTACHMENTS THAT ARE NOT SEALED TO PREVENT WATER INTRUSION SHOULD BE GAPPED A MIN. OF 1/2" FROM FINISH SURFACE



APPROVED SHEATHING

OMEGA AKROFLEX ADHESIVE

APPROVED EPS  
INSULATION BOARD

OMEGA AKROFLEX REINFORCING  
MESH EMBEDDED IN OMEGA  
AKROFLEX BASE COAT

OMEGA AKROFLEX PRIMER  
(OPTIONAL) AND FINISH

SIGN OR OTHER FIXTURE

PIPE SLEEVE SET IN SEALANT

BEARING WASHER

FASTENER ATTACHMENT  
TO BUILDING FRAMING OR  
STRUCTURAL SUBSTRATE

SEALANT SEE NOTE #1

BLOCKING AS NEEDED

INSULATION WHERE  
OCCURS

FRAMING

SEE NOTE #2

THE ARCHITECTURE, ENGINEERING, AND DESIGN OF THE PROJECT USING OMEGA PRODUCTS IS THE RESPONSIBILITY OF THE PROJECT'S DESIGN PROFESSIONAL. ALL SYSTEMS MUST COMPLY WITH LOCAL BUILDING CODES AND STANDARDS. THIS DETAIL IS FOR GENERAL INFORMATION AND GUIDANCE ONLY, AND OMEGA INC. SPECIFICALLY DISCLAIMS ANY LIABILITY FOR THE USE OF THIS DETAIL AND FOR THE ARCHITECTURE, DESIGN, ENGINEERING, OR WORKMANSHIP OF ANY PROJECT. THE PROJECT DESIGN PROFESSIONAL DETERMINES, IN ITS SOLE DISCRETION, WHETHER THIS DETAIL OR A FUNCTIONALLY EQUIVALENT ALTERNATIVE IS BEST SUITED FOR THE THE PROJECT. USE OF A FUNCTIONALLY EQUIVALENT DETAIL DOES NOT VIOLATE OMEGA'S WARRANTY. THIS DETAIL IS SUBJECT TO CHANGE WITHOUT NOTICE. CONTACT OMEGA TO INSURE YOU HAVE THE MOST RECENT VERSION.



CORPORATE OFFICE  
1681 CALIFORNIA AVE., CORONA, CA 92881  
E-MAIL: [INFO@OMEGA-PRODUCTS.COM](mailto:INFO@OMEGA-PRODUCTS.COM)  
WEBSITE: [WWW.OMEGA-PRODUCTS.COM](http://WWW.OMEGA-PRODUCTS.COM)

## AKROFLEX BARRIER EIFS DETAIL

### TYPICAL ATTACHMENT

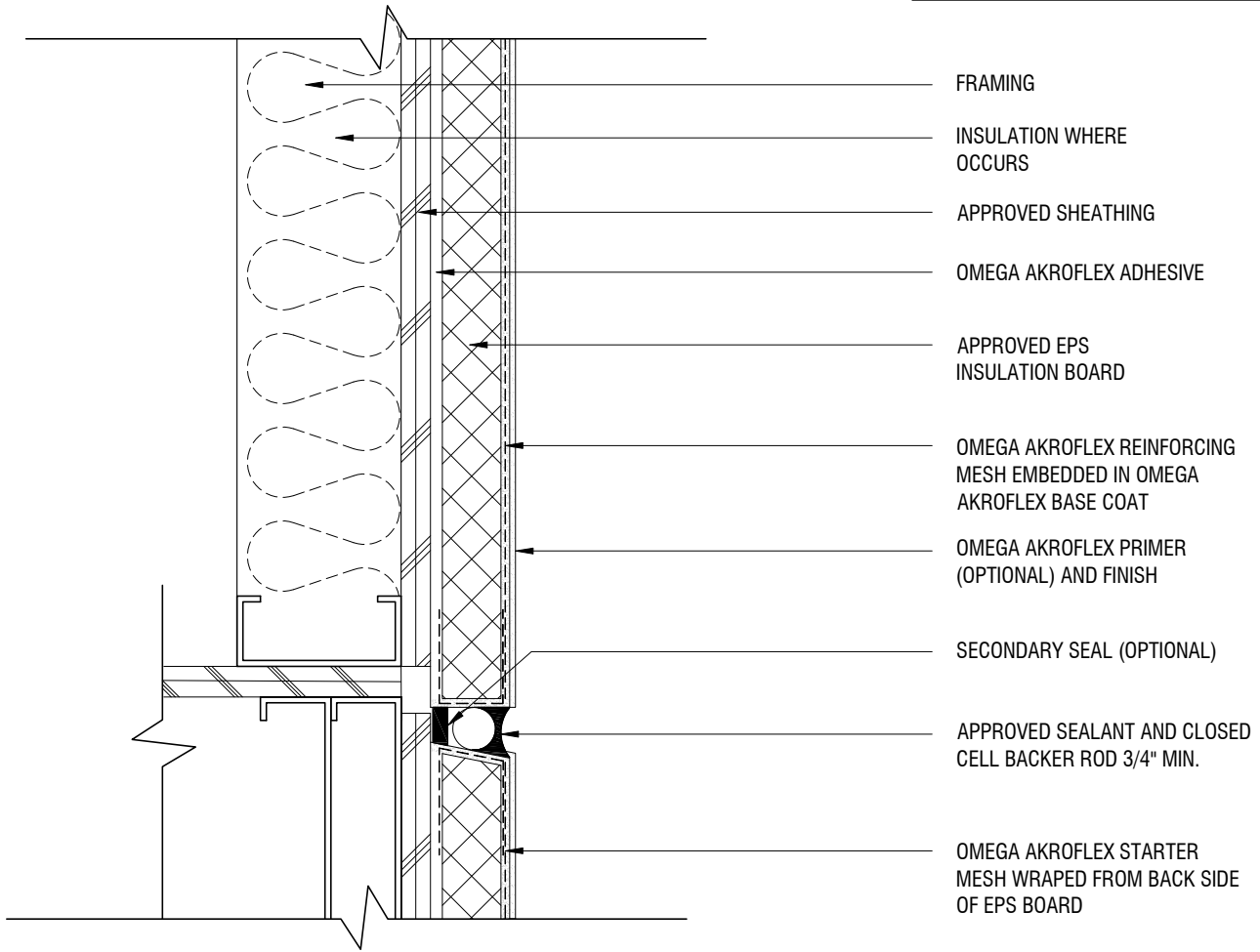
SCALE: 3"=1'-0"

DRAWING NO.: APB 19.00

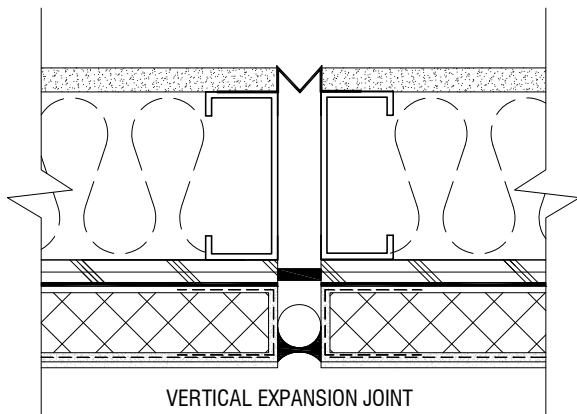
DRAWN: JUNE 2009

## NOTES

1. SEALANT MUST BE WITHIN 2" OF BREAK IN SHEATHING



EXPANSION JOINT AT FLOOR LINE



VERTICAL EXPANSION JOINT

THE ARCHITECTURE, ENGINEERING, AND DESIGN OF THE PROJECT USING OMEGA PRODUCTS IS THE RESPONSIBILITY OF THE PROJECT'S DESIGN PROFESSIONAL. ALL SYSTEMS MUST COMPLY WITH LOCAL BUILDING CODES AND STANDARDS. THIS DETAIL IS FOR GENERAL INFORMATION AND GUIDANCE ONLY, AND OMEGA INC. SPECIFICALLY DISCLAIMS ANY LIABILITY FOR THE USE OF THIS DETAIL AND FOR THE ARCHITECTURE, DESIGN, ENGINEERING, OR WORKMANSHIP OF ANY PROJECT. THE PROJECT DESIGN PROFESSIONAL DETERMINES, IN ITS SOLE DISCRETION, WHETHER THIS DETAIL OR A FUNCTIONALLY EQUIVALENT ALTERNATIVE IS BEST SUITED FOR THE THE PROJECT. USE OF A FUNCTIONALLY EQUIVALENT DETAIL DOES NOT VIOLATE OMEGA'S WARRANTY. THIS DETAIL IS SUBJECT TO CHANGE WITHOUT NOTICE. CONTACT OMEGA TO INSURE YOU HAVE THE MOST RECENT VERSION.



CORPORATE OFFICE  
1681 CALIFORNIA AVE., CORONA, CA 92881  
E-MAIL: [INFO@OMEGA-PRODUCTS.COM](mailto:INFO@OMEGA-PRODUCTS.COM)  
WEBSITE: [WWW.OMEGA-PRODUCTS.COM](http://WWW.OMEGA-PRODUCTS.COM)

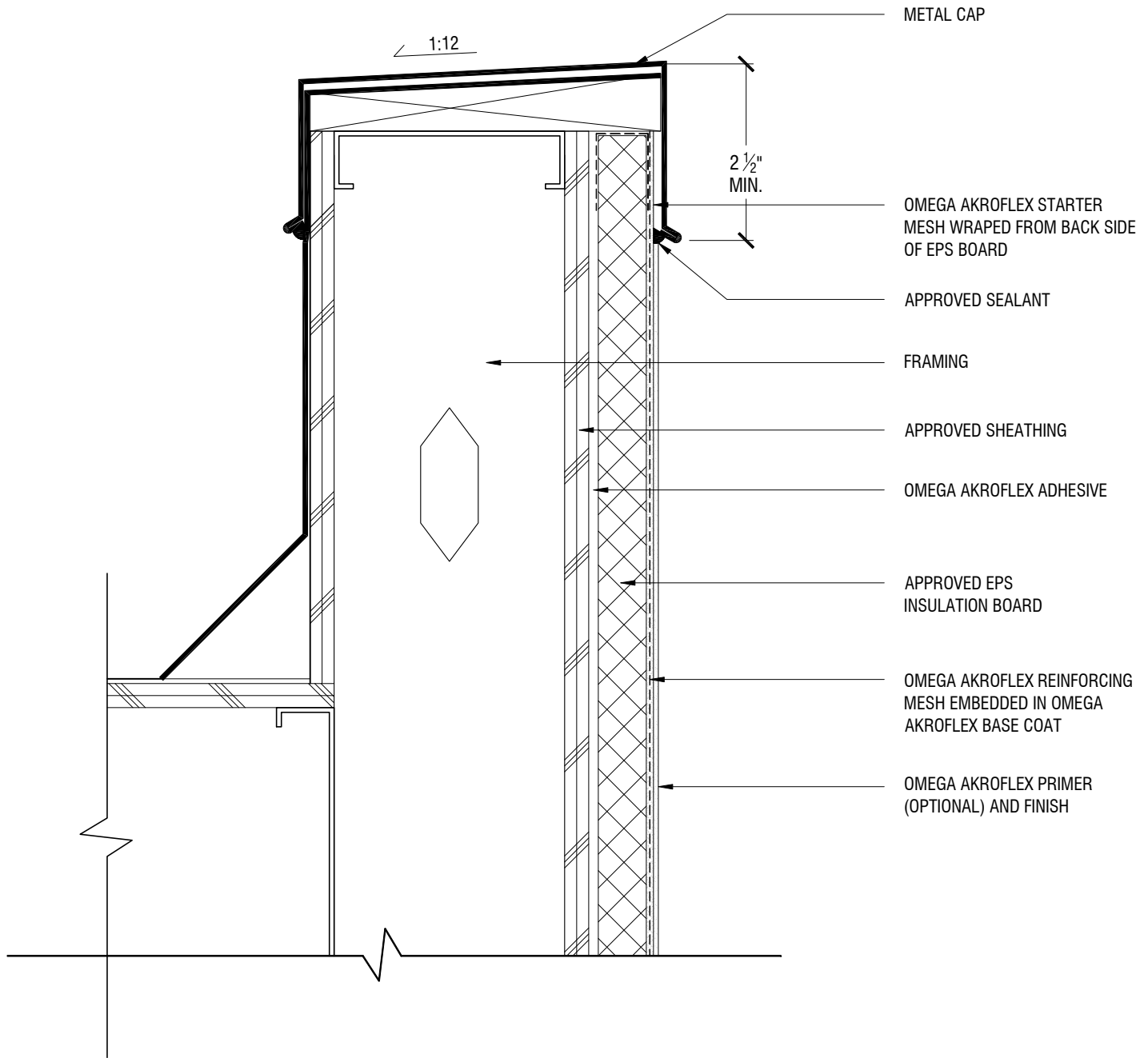
## AKROFLEX BARRIER EIFS DETAIL

### TYPICAL EXPANSION JOINTS

SCALE: 3"=1'-0"

DRAWING NO.: APB 20.00

DRAWN: JUNE 2009



THE ARCHITECTURE, ENGINEERING, AND DESIGN OF THE PROJECT USING OMEGA PRODUCTS IS THE RESPONSIBILITY OF THE PROJECT'S DESIGN PROFESSIONAL. ALL SYSTEMS MUST COMPLY WITH LOCAL BUILDING CODES AND STANDARDS. THIS DETAIL IS FOR GENERAL INFORMATION AND GUIDANCE ONLY, AND OMEGA INC. SPECIFICALLY DISCLAIMS ANY LIABILITY FOR THE USE OF THIS DETAIL AND FOR THE ARCHITECTURE, DESIGN, ENGINEERING, OR WORKMANSHIP OF ANY PROJECT. THE PROJECT DESIGN PROFESSIONAL DETERMINES, IN ITS SOLE DISCRETION, WHETHER THIS DETAIL OR A FUNCTIONALLY EQUIVALENT ALTERNATIVE IS BEST SUITED FOR THE THE PROJECT. USE OF A FUNCTIONALLY EQUIVALENT DETAIL DOES NOT VIOLATE OMEGA'S WARRANTY. THIS DETAIL IS SUBJECT TO CHANGE WITHOUT NOTICE. CONTACT OMEGA TO INSURE YOU HAVE THE MOST RECENT VERSION.



CORPORATE OFFICE  
 1681 CALIFORNIA AVE., CORONA, CA 92881  
 E-MAIL: [INFO@OMEGA-PRODUCTS.COM](mailto:INFO@OMEGA-PRODUCTS.COM)  
 WEBSITE: [WWW.OMEGA-PRODUCTS.COM](http://WWW.OMEGA-PRODUCTS.COM)

## AKROFLEX BARRIER EIFS DETAIL

### TYPICAL PARAPET WITH METAL CAP

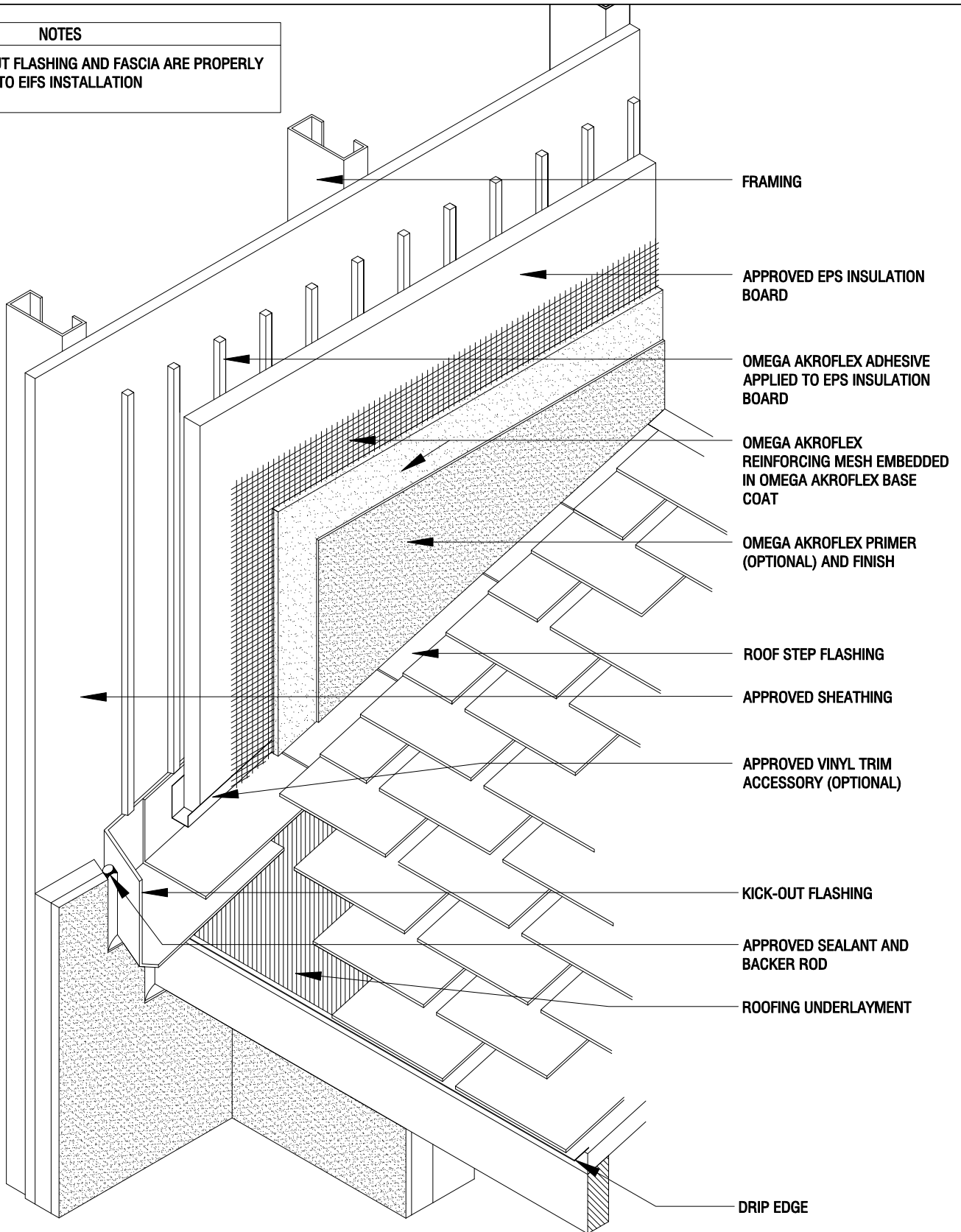
SCALE: 3"=1'-0"

DRAWING NO.: APB 21.00

DRAWN: JUNE 2009

**NOTES**

1. ENSURE KICK-OUT FLASHING AND FASCIA ARE PROPERLY FLASHED PRIOR TO EIFS INSTALLATION



THE ARCHITECTURE, ENGINEERING, AND DESIGN OF THE PROJECT USING OMEGA PRODUCTS IS THE RESPONSIBILITY OF THE PROJECT'S DESIGN PROFESSIONAL. ALL SYSTEMS MUST COMPLY WITH LOCAL BUILDING CODES AND STANDARDS. THIS DETAIL IS FOR GENERAL INFORMATION AND GUIDANCE ONLY, AND OMEGA INC. SPECIFICALLY DISCLAIMS ANY LIABILITY FOR THE USE OF THIS DETAIL AND FOR THE ARCHITECTURE, DESIGN, ENGINEERING, OR WORKMANSHIP OF ANY PROJECT. THE PROJECT DESIGN PROFESSIONAL DETERMINES, IN ITS SOLE DISCRETION, WHETHER THIS DETAIL OR A FUNCTIONALLY EQUIVALENT ALTERNATIVE IS BEST SUITED FOR THE THE PROJECT. USE OF A FUNCTIONALLY EQUIVALENT DETAIL DOES NOT VIOLATE OMEGA'S WARRANTY. THIS DETAIL IS SUBJECT TO CHANGE WITHOUT NOTICE. CONTACT OMEGA TO INSURE YOU HAVE THE MOST RECENT VERSION.



CORPORATE OFFICE  
 1681 CALIFORNIA AVE., CORONA, CA 92881  
 E-MAIL: [INFO@OMEGA-PRODUCTS.COM](mailto:INFO@OMEGA-PRODUCTS.COM)  
 WEBSITE: [WWW.OMEGA-PRODUCTS.COM](http://WWW.OMEGA-PRODUCTS.COM)

**AKROFLEX BARRIER  
 EIFS DETAIL**

**ROOF/WALL KICK-OUT FLASHING  
 DETAIL**

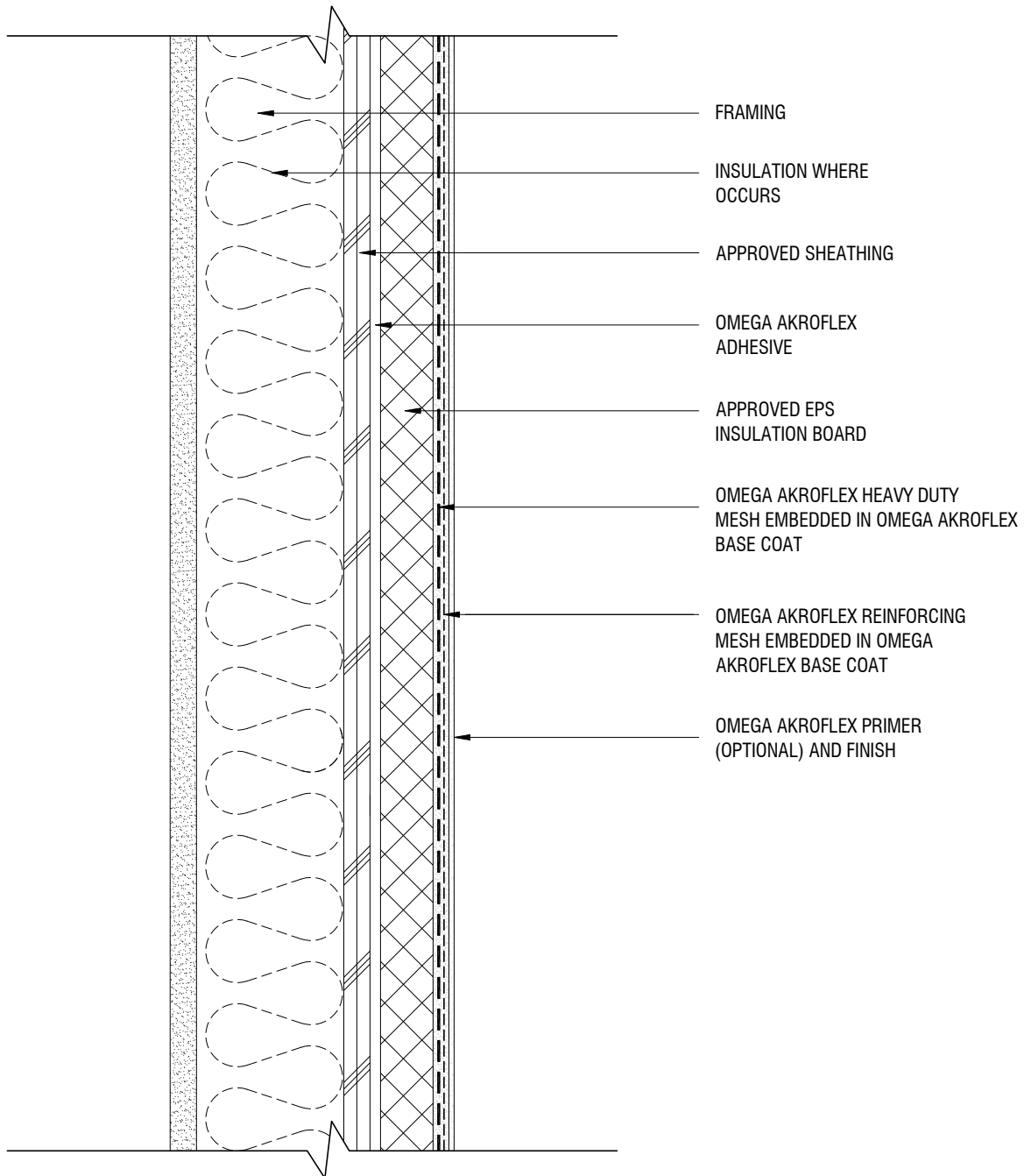
SCALE: 3"=1'-0"

DRAWING NO.: APB 22.00

DRAWN: JUNE 2009

**NOTES**

1. DO NOT LAP HEAVY DUTY MESH



THE ARCHITECTURE, ENGINEERING, AND DESIGN OF THE PROJECT USING OMEGA PRODUCTS IS THE RESPONSIBILITY OF THE PROJECT'S DESIGN PROFESSIONAL. ALL SYSTEMS MUST COMPLY WITH LOCAL BUILDING CODES AND STANDARDS. THIS DETAIL IS FOR GENERAL INFORMATION AND GUIDANCE ONLY, AND OMEGA INC. SPECIFICALLY DISCLAIMS ANY LIABILITY FOR THE USE OF THIS DETAIL AND FOR THE ARCHITECTURE, DESIGN, ENGINEERING, OR WORKMANSHIP OF ANY PROJECT. THE PROJECT DESIGN PROFESSIONAL DETERMINES, IN ITS SOLE DISCRETION, WHETHER THIS DETAIL OR A FUNCTIONALLY EQUIVALENT ALTERNATIVE IS BEST SUITED FOR THE THE PROJECT. USE OF A FUNCTIONALLY EQUIVALENT DETAIL DOES NOT VIOLATE OMEGA'S WARRANTY. THIS DETAIL IS SUBJECT TO CHANGE WITHOUT NOTICE. CONTACT OMEGA TO INSURE YOU HAVE THE MOST RECENT VERSION.



CORPORATE OFFICE  
 1681 CALIFORNIA AVE., CORONA, CA 92881  
 E-MAIL: [INFO@OMEGA-PRODUCTS.COM](mailto:INFO@OMEGA-PRODUCTS.COM)  
 WEBSITE: [WWW.OMEGA-PRODUCTS.COM](http://WWW.OMEGA-PRODUCTS.COM)

**AKROFLEX BARRIER  
 EIFS DETAIL**

**HIGH IMPACT ASSEMBLY**

SCALE: 3"=1'-0"

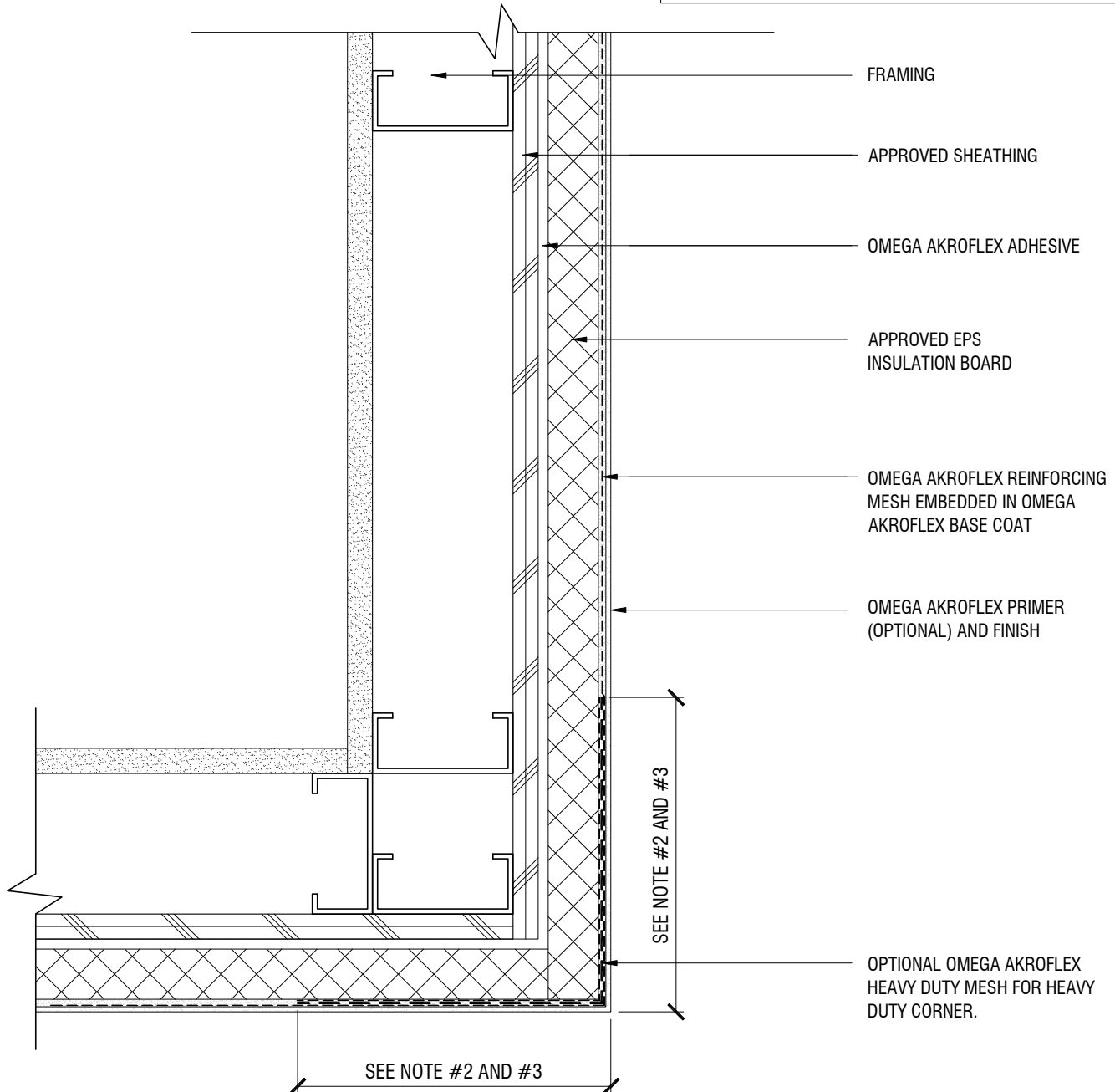
DRAWING NO.: APB 23.00

DRAWN: JUNE 2009



## NOTES

1. DOUBLE WRAP OUTSIDE CORNERS WITH REINFORCING MESH OR USE CORNER MESH.
2. FIELD MESH SHALL NOT BE LAPPED WITHIN 8" OF CORNER.
3. FOR OPTIONAL HEAVY DUTY CORNER. HEAVY DUTY MESH SHALL BE BUTTED AT CORNER EDGE. DO NOT LAP.



THE ARCHITECTURE, ENGINEERING, AND DESIGN OF THE PROJECT USING OMEGA PRODUCTS IS THE RESPONSIBILITY OF THE PROJECT'S DESIGN PROFESSIONAL. ALL SYSTEMS MUST COMPLY WITH LOCAL BUILDING CODES AND STANDARDS. THIS DETAIL IS FOR GENERAL INFORMATION AND GUIDANCE ONLY, AND OMEGA INC. SPECIFICALLY DISCLAIMS ANY LIABILITY FOR THE USE OF THIS DETAIL AND FOR THE ARCHITECTURE, DESIGN, ENGINEERING, OR WORKMANSHIP OF ANY PROJECT. THE PROJECT DESIGN PROFESSIONAL DETERMINES, IN ITS SOLE DISCRETION, WHETHER THIS DETAIL OR A FUNCTIONALLY EQUIVALENT ALTERNATIVE IS BEST SUITED FOR THE THE PROJECT. USE OF A FUNCTIONALLY EQUIVALENT DETAIL DOES NOT VIOLATE OMEGA'S WARRANTY. THIS DETAIL IS SUBJECT TO CHANGE WITHOUT NOTICE. CONTACT OMEGA TO INSURE YOU HAVE THE MOST RECENT VERSION.



CORPORATE OFFICE  
 1681 CALIFORNIA AVE., CORONA, CA 92881  
 E-MAIL: [INFO@OMEGA-PRODUCTS.COM](mailto:INFO@OMEGA-PRODUCTS.COM)  
 WEBSITE: [WWW.OMEGA-PRODUCTS.COM](http://WWW.OMEGA-PRODUCTS.COM)

## AKROFLEX BARRIER EIFS DETAIL

### TYPICAL OR HEAVY DUTY CORNER DETAILS

SCALE: 3"=1'-0"

DRAWING NO.: APB 24.00

DRAWN: JUNE 2009