



BUYER'S GUIDE

THE FULL LINE OF OMEGA PRODUCTS



WALL SYSTEMS

- EIFS
- One & Three Coat Stucco
- Crack Isolation
- Veneer Mortars & Grout

FINISHES

- Cementitious Stucco
- 100% Acrylic Stucco
- Coatings
- Lime-based Plasters

ABC'S

- Admixers
- Bonders
- Cleaners
- Sealers

OTHER PRODUCTS

- Architectural Foam Coatings
- Liquid Applied Water Resistive Air Barriers

MANUFACTURING A COMPLETE FAMILY OF PREMIUM WALL SYSTEM PRODUCTS

omega-products.com



PRIVATELY OWNED
AMERICAN MADE





OMEGA PRODUCTS INTERNATIONAL is a leader in commercial and residential exterior stucco wall systems and finishes. Our state-of-the-art manufacturing facilities, unsurpassed quality control, industry-leading wall system warranties, and our commitment to service has made us the professional's choice since 1974.



Omega Products provides the most complete line of exterior stucco wall systems and finishes, including ColorTek Stucco, OmegaFlex 100% Acrylic Finishes, Diamond Wall One Coat Stucco Systems, AkroFlex Exterior Insulation Finish Systems (EIFS), and Masonry Adhered Veneer Systems (MAVS). Additionally, Omega manufactures performance enhancing admixtures, bonders, elastomeric coatings, and interior finishes.



Photo courtesy of Shea Homes.

Omega's Valentino brand manufactures authentic decorative Venetian plaster for upscale designer wall applications. Omega's Siena Products division produces a full line of floor preparation and tile & stone installation products.



Premium, Yet Practical Solutions For Veneer & Masonry Installations

Omega Product's Masonry Adhered Veneer Systems (MAVS) offers contractors and architectural specifiers high performance installation products for challenging adhered veneer installations.

- Premium bonding mortars and grouts.
- Engineered for demanding vertical applications, including large format and heavy veneers.
- Industry-leading warranties, including combined system warranties with Omega's stucco products.

STUCCO SYSTEMS

BASE COATS

Diamond Wall Concentrate	2
Diamond Wall PM	2
Diamond Wall Sanded	2
DryBond	2
FoamTek	3
Super Cement	3
Super Cement Sanded Scratch & Brown	3
Monomix	3
Crack Isolation Base	4
Styro Admix	5
Omega Reinforcing Mesh	13
AkroFlex Reinforcing Mesh	13

CEMENTITIOUS FINISHES

ColorTek Exterior Stucco	6
ColorTek SmoothCoat Exterior Stucco	6
ColorTek Paint Grade Exterior Stucco	6
ColorPak	6
OmegaCoat (Fog Coat)	7
OmegaCoat Plus (Premium Fog Coat)	7
SuperFog	7
Travertino Finishes	7
OmegaCrete	7

ACRYLIC FINISHES

AkroFlex Malibu Finishes	8
AkroFlex Semi-Smooth Finishes	8
AkroFlex Delta Finishes	8
AkroFlex CircleTex Finishes	8
AkroFlex Desert Series Finishes	9
AkroLastic Finishes	9
AkroLastic ProPlus Finishes	9
OmegaFlex Finishes	9
RynoTex	10
AkroCoat	10
Elastomeric 44	10
AkroTique	10
RapidPrime	11
AkroFlex Base Primer	11
Color Bottle System	11

EIFS SYSTEMS

BASE COATS

StyroGlue Base	4
StyroGlue Drybond	4
StyroGlue Plus Base	4
StyroGlue TF Base	5
StyroBond Adhesive	5
AkroFlex Reinforcing Mesh	13

ACRYLIC FINISHES

AkroFlex Malibu Finishes	8
AkroFlex Semi-Smooth Finishes	8
AkroFlex Delta Finishes	8
AkroFlex CircleTex Finishes	8
AkroFlex Desert Series Finishes	9
AkroLastic Finishes	9
AkroLastic ProPlus Finishes	9
AkroFlex Base Primer	11
Color Bottle System	11

WATER/AIR BARRIER

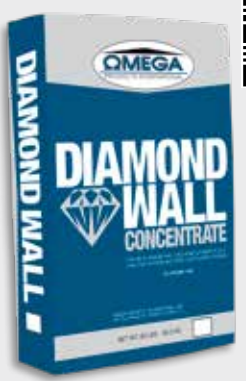
AkroGuard	12
AkroFill	12
OmegaBlock	12

ADMIXTURES, BONDERS, CLEANERS & SEALERS

Admix 500	14
AkroLoc	14
PolyLoc	14
OmegaCure	14
AquaShield	15
E-FX Admix	15
BondCrete	15
OmegaGuard	16
OmegaGuard Plus	16
OmegaSeal 1000	16
Stucco Cleaner	17

VENEER MORTARS & GROUTS

MAVS 1000	18
MAVS 2000	18
MAVS 3000	18
MAVS Masonry Mortar & Grout	18
MAVS Adhesive Sealant	19



Diamond Wall Concentrate (DWC)

A factory prepared blend of portland cement complying with ASTM C150, chopped fibers, and proprietary ingredients field mixed with sand, water, and an optional admix. DWC is the base coat used in the Diamond Wall Stucco Systems.

Coverage

Approximately 8yd² to 10yd² (6.7m² to 8.4m²) per bag at 3/8" thick. Coverage may vary.

Packaging

80 lb (36.3 kg) bags

Pallets

40 – 80 lb bags per pallet, 3,200 lbs (1,451 kg) net †

Shelf Life

1 year

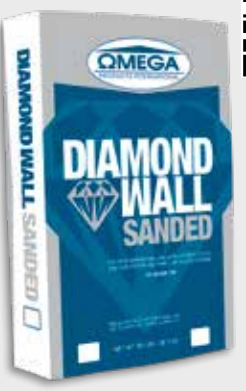
Color

Natural grey cement

SKU

X070-0011 **Grey**

TYPE



Diamond Wall Sanded

A factory prepared blend of portland cement complying with ASTM C150, chopped fibers, proprietary ingredients, and sand that is mixed with water and an optional admix. Diamond Wall Sanded is the base coat for the Diamond Wall Stucco Systems.

Coverage

Approximately 2.2yd² to 2.5yd² (1.8m² to 2.1m²) per 80 lbs. at 3/8" thick. Coverage may vary.

Packaging

80 lb (36.2 kg) bags

3,000 lb (1,360 kg) super sacks

Pallets

42 – 80 lb bags per pallet, 3,360 lbs (1,522 kg) net †

Shelf Life

1 year

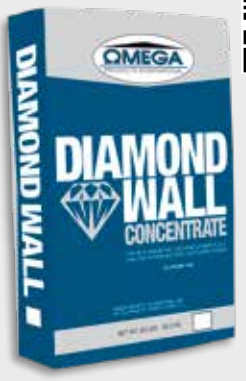
Color

Natural grey cement

SKU

X070-0014 **80 lb. Bag**
X070-0026 **3,000 lb. Super Sack**

TYPE



Diamond Wall Pro Concentrate (Replaces Diamond Wall PM)

A cementitious, fiber-reinforced, polymer-modified base coat that offers an upgrade to current one coat stucco systems by providing improved crack resistance, flexural and tensile strength, and impact resistance. It is a factory-prepared blend of portland cement complying with ASTM C150, chopped fibers, dry polymers, and proprietary ingredients field mixed with sand and water. Diamond Wall Pro Concentrate is the base coat used in the Diamond Wall Pro Stucco Systems.

Coverage

Approximately 8yd² to 10yd² (6.7m² to 8.4m²) per bag at 3/8" thick. Coverage may vary.

Packaging

80 lb (36.3 kg) bags

Pallets

40 – 80 lb bags per pallet, 3,200 lbs (1,451 kg) net †

Shelf Life

1 year

Color

Natural grey cement

SKU

X070-0073 **Grey**

TYPE

NEW



DryBond

A dry blend, polymer-modified cement that when mixed with water at the job site, produces a high-performance, easily applied adhesive and base. DryBond may be used as an adhesive and base coat for EPS foam shapes. Additionally, it may be used in the Omega Crack Isolation System and as a leveling coat over approved substrates.

Coverage

Approximately 80ft² to 130ft² (7.4m² to 12.1m²) per bag. Coverage may vary.

Packaging

50 lb (22.7 kg) bags

Pallets

56 – 50 lb bags per pallet, 2,800 lbs (1,268 kg) net †

Shelf Life

1 year

Color

Natural grey or white

SKU

X070-0000 **Grey**
X070-0001 **White**

TYPE

NOT FOR EIFS

†Listed pallet weights are for material only (excludes weight of pallet).

FoamTek

A dry blend, polymer-modified, portland cement-based material specifically formulated for coating and attaching architectural EPS foam shapes to approved substrates. It is available in FoamTek 60 (fine), FoamTek 30 (medium), FoamTek 20 (medium-coarse), or FoamTek 16 (coarse). FoamTek is also available in a highly flexible version (FoamFlex), semi-flexible (FlexBase), and high impact (FoamTek HI).

Coverage

FoamTek 60, 30, and 20: Approximately 90ft² (8.4m²)

FoamTek 16: Approximately 60ft² (5.6m²)

Coverage may vary.

NOT FOR EIFS

Packaging

50 lb (22.7 kg) bags

Pallets

56 – 50 lb bags per pallet, 2,800 lbs (1,268 kg) net †

Shelf Life

1 year

Color

Natural grey cement

SKU	TYPE
X070-0008	Fine 60
X070-0005	Medium 30
X070-0003	Med-Coarse 20
X070-0007	Coarse 16
X070-0051	FlexBase
X070-0053	FoamFlex
See Price List	FoamTek HI



Super Cement

A premium, all purpose, plastering cement that is a mixture of portland cement complying with ASTM C150 and proprietary ingredients, which will increase the workability and early strength of the product. Super Cement is an excellent alternative to plastic cement and meets or exceeds job site requirements for portland cement-based plaster. Super Cement is available either as fibered or non-fibered.

Coverage

Approximately 10yd² to 11.1yd² (8.4m² to 9.3m²) per sack at 3/8" thick. Coverage may vary.

Packaging

94 lb (42.6 kg) bags

Pallets

35 – 94 lb bags per pallet, 3,290 lbs (1,490 kg) net †

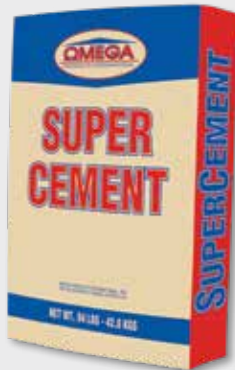
Shelf Life

1 year

Color

Natural grey cement

SKU	TYPE
X070-0020	Fibered 94 lb. Bag
X070-0019	Non-Fibered 94 lb. Bag



Super Cement Sanded Scratch & Brown

A portland cement-based scratch and brown plaster, which is a factory prepared blend of portland cement complying with ASTM C150, sand and proprietary ingredients that increase the workability and early strength of the product. Super Cement Sanded is an excellent alternative to potentially inconsistent field mixed portland cement-based scratch and brown plaster. Super Cement Sanded is available either fibered or non-fibered.

Coverage

Approximately 1yd² to 1.3yd² (.8m² to 1.1m²) per 80lb. at 3/4" thick. Coverage may vary.

Packaging

80 lb (36.2 kg) bags

3,000 lb (1360 kg) super sacks

Pallets

42 – 80 lb bags per pallet, 3,360 lbs (1,522 kg) net †

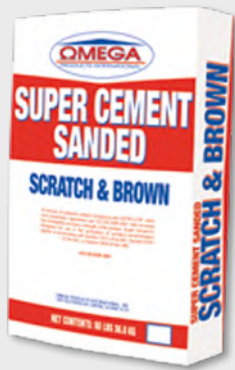
Shelf Life

1 year

Color

Natural grey cement

SKU	TYPE
X130-3014	Fibered 80 lb. Bag
X130-3013	Non-Fibered 80 lb. Bag
See Price List	3,000 lb. Super Sack



Monomix

A creative plastering product consisting of portland cement, dry polymers, graded aggregates, and other proprietary additives. Monomix provides the applicator with a durable, carvable, paintable base coat ideal for creating sculpted features.

Coverage

Approximately 20ft² (1.9m²), at a 3/8" (9.5mm) thickness, per bag. Coverage may vary.

Packaging

75 lb (34 kg) bags

Pallets

49 – 75 lb bags per pallet, 3,675 lbs (1,665 kg) net †

Shelf Life

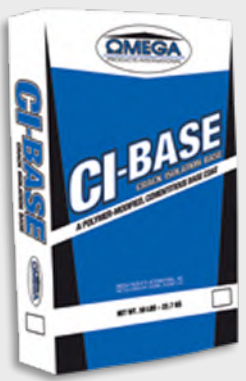
1 year

Color

Natural grey or white

SKU	TYPE
X020-0020	Grey
X020-0021	White





Crack Isolation Base

A dry blend, polymer-modified, portland cement-based material specifically formulated as a base coat for embedding mesh in the Omega Crack Isolation System (CIS). Available in 50 and 90 lb bags in coarse and regular. *Not available in all markets.*

Coverage

Crack Isolation Base: Approximately 80ft² (7.4m²) per 50lb and 150ft² (13.9m²) per 90lb.

Crack Isolation Base 20 Coarse: Approximately 70ft² (6.5m²) per 50lb and 110ft² (10.2m²) per 90lb.

Coverages may vary.

NOT FOR EIFS

Packaging

50 lb (22.6 kg) bags
90 lb (40.8 kg) bags

Pallets

56 – 50 lb bags per pallet, 2,800 lbs (1,268 kg) net ⁺
35 – 90 lb bags per pallet, 3,150 lbs (1,429 kg) net ⁺

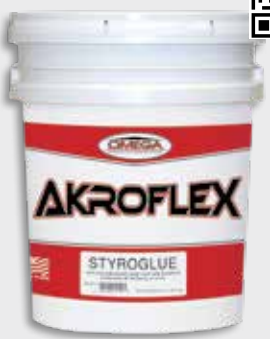
Shelf Life

1 year

Color

Natural grey cement

SKU	TYPE
X070-0032	50 lb. Bag
X070-0030	90 lb. Bag
X070-0033	20 (coarse) 50 lb. Bag
X070-0031	20 (coarse) 90 lb. Bag



StyroGlue Base

A 100% polymer-based base coat and adhesive, which is field mixed in a 1:1 ratio, by weight, with portland cement meeting ASTM C150. StyroGlue may be used as an adhesive and base coat for AkroFlex EIF Systems and EPS foam shapes. Additionally, it may be used as a skim coat over approved substrates.

Coverage

Approximately 180ft² to 200ft² (16.7m² to 18.6m²) as a base coat. 160ft² to 190ft² (14.9m² to 17.7m²) as an adhesive. Coverage may vary.

Packaging

55 lb (24.9 kg), 5 gallon (18.9 L) pail

Pallets

32 – 5 gal. pails per pallet, 1,760 lbs (797 kg) net ⁺

Shelf Life

2 years

Color

Natural off-white

SKU	TYPE
X100-0000	5 gal. Pail



StyroGlue DryBond

A premium, dry blend, portland cement-based, polymer-modified base coat and adhesive, which is field mixed with water. StyroGlue DryBond may be used as an adhesive and base coat for AkroFlex EIF Systems and EPS foam shapes. Additionally, it may be used as a skim coat over approved substrates.

Coverage

Approximately 80ft² to 90ft² (7.4m² to 8.4m²).
Coverage may vary.

Packaging

50 lb (22.6 kg) bags

Pallets

56 – 50 lb bags per pallet, 2,800 lbs (1,268 kg) net ⁺

Shelf Life

1 year

Color

Natural light grey or white

SKU	TYPE
X100-0004	Grey 50 lb. Bag
X100-0005	White 50 lb. Bag



StyroGlue Plus Base

A 100% polymer-based, fiber reinforced, water-resistant base coat and adhesive, which is field mixed in a 1:1 ratio by weight with portland cement meeting ASTM C150. StyroGlue Plus is specially designed for use in high moisture areas, such as sills, parapets, and sloped locations. StyroGlue Plus may be used as an adhesive and base coat for AkroFlex EIF Systems and skim coat over approved substrates.

Coverage

Approximately 160ft² to 180ft² (14.9m² to 16.7m²).
Coverage may vary.

Packaging

55 lb (24.9 kg), 5 gallon (18.9 L) pail

Pallets

32 – 5 gal. pails per pallet, 1,760 lbs (797 kg) net ⁺

Shelf Life

2 years

Color

Natural off-white

SKU	TYPE
X100-0003	5 gal. Pail

BASE COATS



StyroGlue TF Base

A non-cementitious, tintable, fiber-reinforced base coat that is 100% acrylic, water-based, fibered, and manufactured to be flexible and crack resistant. It eliminates the mixing and labor of working with portland cement base coats. The base coat can be tinted to the approximate color of the finish.

Coverage

Approximately 100ft² to 140ft² (9.3m² to 13.0m²). Coverage may vary.

Packaging

65 lb (29.48 kg), 5 gallon (18.9 L) pail

Pallets

32 – 5 gal. pails per pallet, 2,080 lbs (942 kg) net*

Shelf Life

Color

Natural off-white. May be colored using the Omega Color Bottle System.

SKU

X100-0002 TYPE
5 gal. Pail



StyroBond Adhesive

A non-cementitious, 100% acrylic adhesive designed to bond EPS foam to various approved substrates, including wood-based sheathing. It does not require the addition of portland cement, which reduces the labor costs during application.

NOTE: Not for use in adhering EPS to EPS.

Coverage

Approximately 200ft² to 300ft² (18.6m² to 27.9m²). Coverage may vary.

Packaging

65 lb (29.48 kg), 5 gallon (18.9 L) pail

Pallets

32 – 5 gal. pails per pallet, 2,080 lbs (942 kg) net †

Shelf Life

2 years

Color

Blue

SKU

X100-0001 TYPE
5 gal. Pail



Styro Admix

A 100% acrylic admix that is field mixed with Omega's acrylic finishes and portland cement to create an adhesive and base coat. Styro Admix saves contractors money, by allowing them to create an economical base coat and/or adhesive from leftover AkroFlex or OmegaFlex finishes. This base coat/adhesive can be used to coat and attach EPS foam shapes or as skim coat over approved substrates.

Coverage

Approximately 400ft² to 600 ft² (37.2m² to 55.7m²) as a base coat and 350 ft² to 550 ft² (32.5m² to 51m²) as an adhesive.

Packaging

40lb (18.1kg), 5 gallon (18.9 L) pail

Shelf Life

2 years

Color

White liquid, final color will vary depending on color of acrylic finish used.

SKU

X100-0009 TYPE
5 gal. Pail



REDUCE STUCCO CRACKING



Omega Products International's Crack Isolation System is an effective method used to reduce the appearance of surface cracking in new and existing plaster systems. With stucco cracking continuing to be one of the most common complaints from building owners, Omega's Crack Isolation System is a cost effective way to improve customer satisfaction and reduce callbacks or repairs. It is also a great choice for repairing or refreshing an existing stucco building that has surface cracking.



ColorTek Exterior Stucco

A premium, factory blended, cement-based, stucco finish manufactured from the highest-grade portland cement, hydrated lime, graded aggregates, and specific additives. ColorTek comes in various aggregate combinations that allow design flexibility and a variety of finish textures.

Coverage

Coarse, 16/20 and 20/30

Dash Finish: 8yd² to 10yd² (6.7m² to 8.4m²)

Texture Finish: 10yd² to 16yd² (8.4m² to 13.4m²)

Float Finish: 15yd² to 20yd² (12.5m² to 16.7m²).

30/30

Float Finish (Scratch & Double): 8yd² to 10yd² (6.7m² to 8.4m²). Coverage may vary.

Packaging

90 lb (40.8 kg) bags

Pallets

35 – 90 lb bags per pallet, 3,150 lbs (1,429 kg) net †

Shelf Life

1 year

Color

White (Base 10), grey (Base 2), white/grey (Base 1), dark grey (Base 5), or factory mixed color.

SKU

TYPE

X020-0216	Grey 16/20 Base 2
X020-0223	Grey 20/30 Base 2
X020-0233	Grey 30/30 Base 2
X020-1016	White 16/20 Base 10
X020-1023	White 20/30 Base 10
X020-1033	White 30/30 Base 10
See Price List	Base 1
See Price List	Base 5
See Price List	Pre-Mixed
See Price List	PM



ColorTek SmoothCoat

A premium, factory blended, portland cement-based stucco finish used to create a smooth Santa Barbara or Mission type finish. It is manufactured from the highest-grade portland cement, hydrated lime, graded aggregates, and specific additives.

Coverage

8yd² to 10yd² (6.7m² to 8.4m²) with required double application. Coverage may vary.

Packaging

90 lb (40.8 kg) bags

Pallets

35 – 90 lb bags per pallet, 3,150 lbs (1,429 kg) net †

Shelf Life

1 year

Color

White (Base 10), grey (Base 2), white/grey (Base 1), dark grey (Base 5), or factory mixed color.

SKU

TYPE

X020-0136	Base 1
X020-0236	Base 2
X020-0536	Base 5
X020-1036	Base 10
See Price List	Pre-Mixed



ColorTek Premium Paint Grade (PG) Exterior Stucco

A premium, factory blended, portland cement-based, stucco finish manufactured from the highest-grade portland cement, hydrated lime, graded aggregates, and specific additives. ColorTek Premium PG comes in various aggregate combinations that allow design flexibility and a variety of finish textures. ColorTek Premium PG is designed to be painted and cannot be used with the ColorPak coloring system.

Coverage

Coarse, 16/20 and 20/30

Dash Finish: 8yd² to 10yd² (6.7m² to 8.4m²)

Texture Finish: 10yd² to 16yd² (8.4m² to 13.4m²)

Float Finish: 15yd² to 20yd² (12.5m² to 16.7m²)

30/30

Float Finish (Scratch & Double): 8yd² to 10yd² (6.7m² to 8.4m²). Coverage may vary.

Packaging

90 lb (40.8 kg) bags

Pallets

35 –90 lb bags per pallet, 3,150 lbs (1,429 kg) net †

Shelf Life

1 year

Color

Natural grey cement

SKU

TYPE

X020-0014	16/20
X020-0015	20/30
X020-0026	30/30
X020-0027	Smooth



ColorPak

A dry blended formulation of iron oxide pigments used to color ColorTek Stucco. ColorPak may be used to color the following products:

- ColorTek Exterior Stucco
- ColorTek SmoothCoat
- Travertino

NOTE: Adding ColorPak to materials other than those listed will not produce the same colors. The color choice will determine the required ColorTek Base designation and should be properly coordinated.

Packaging

12 – 1 lb to 2 lb bags (.45 to .09 kg) per case*

Pallets

56 cases per pallet – weight varies †

Shelf Life

1 year

Color

Available in a wide variety of colors. See the most current Omega Color Charts for stock colors available. Custom colors are available upon request.

SKU

TYPE

See Price List

* Stock colors. Custom color weights may vary.

OmegaCoat (Fog Coat)

A cementitious fog coat, OmegaCoat is a spray-applied cement-based, water-soluble, pigmented coating, which cures to become an integral part of the stucco surface and maintains original finish characteristics. It is an economical method to achieve color uniformity and to enhance or refresh the appearance of existing stucco.

Coverage

Approximately 400ft² to 900ft² (37.2m² to 83.6m²). Coverage may vary.

Packaging

25 lb (11.3 kg) bags

Pallets

100 – 25 lb bags per pallet, 2,500 lbs (1,133 kg) net †

Shelf Life

1 year

Color

Available in a wide variety of colors. Some dark stucco colors may not be attainable in OmegaCoat. See a current ColorTek color chart for stock colors.

SKU

TYPE

See Price List 25 lb. Bag



OmegaCoat Plus (Premium Fog Coat)

A premium, cementitious, polymer-modified fog coat, OmegaCoat Plus is a spray-applied pigmented coating, which cures to become an integral part of the stucco surface and maintains original finish characteristics. When compared to standard fog coat, OmegaCoat Plus has improved adhesion and water-resistance, while reducing the likelihood of color streaking and efflorescence. When compared to paint, OmegaCoat Plus is longer-lasting, more durable, and more breathable.

Coverage

Approximately 400ft² to 900ft² (37.2m² to 83.6m²). Coverage may vary.

Packaging

25 lb (11.3 kg) bags

Pallets

100 – 25 lb bags per pallet, 2,500 lbs (1,133 kg) net †

Shelf Life

1 year

Color

Available in a wide variety of colors. Some dark stucco colors may not be attainable in OmegaCoat. See a current ColorTek color chart for stock colors.

SKU

TYPE

See Price List 25 lb. Bag



SuperFog (Fog Coat)

A premium coating designed to achieve color uniformity while refreshing the appearance of existing stucco or other porous substrates. Unlike paint, SuperFog helps to retain the surface's natural appearance and properties. SuperFog is not at risk of efflorescing or having a blotchy finish like standard cement-based fog coats.

Coverage

Approximately 320ft² to 480ft² (30m² to 45m²) at two coats. Coverage may vary.

Packaging

12 lb (5.4kg) pails

48 pails per pallet, 2,300 lbs (1,043 kg) net †

Shelf Life

2 year

Color

White, and may be colored using the Omega Color Bottle System.

SKU

TYPE

X040-0008 12 lb. Pail



Travertino Finishes

A cementitious interior/exterior finish manufactured with a mixture of various size aggregates designed to achieve a variety of sedimentary stone appearances, such as travertine, limestone, and sandstone. Travertino can create a pitted look like that of classic Tuscan stone or can be troweled/ground to achieve a smooth stone appearance. Designs can also be carved into Travertino during application and can be used to cast special shapes. Travertino is an excellent choice to create a beautiful, warm sedimentary stone appearance with a lower cost, lower weight, and shorter lead time than real stone. Available in Fine and Standard textures.

Coverage

Approximately 26.5 ft² (2.1 m²) at a 1/4 inch coat.

Coverage may vary.

Packaging

50 lb (22.6 kg) bags

Pallets

56 – 50 lb bags per pallet, 2,800 lbs (1,268 kg) net †

Shelf Life

1 year

Color

Light grey. Can be colored using Omega ColorPaks.

SKU

TYPE

X121-0113 Standard

X121-0116 Fine



OmegaCrete

A premium, one component, polymer-modified cementitious coating designed to create a smooth finish on poured-in-place, tilt-up, precast, or other concrete. Specially formulated to be easily applied over these porous substrates, OmegaCrete will cure to become an integral part of the wall while maintaining the wall's durability and breathability. OmegaCrete is an excellent choice to cover bugholes, honeycombs, and other small imperfections in concrete surfaces to produce a clean, uniform, smooth appearance.

Coverage

Approximately 100 ft² (9.3 m²) at a 1/16-inch coat.

Coverage may vary.

Packaging

50lb (22.7kg) bags

50lb (22.7kg), 5 gallon (18.9L) pails

Shelf Life

1 year

Color

Light Grey / Cement

SKU

TYPE

X020-0035 50 lb. Bag





AkroFlex Malibu Finishes
 100% acrylic-based finishes using the latest Dirt Pick-up Resistance (DPR) technology, which can produce a variety of textures depending on the aggregate size and application method. Enhances the appearance of any plastered structure by providing a flexible, durable, integrally colored finish. Available in the following aggregate sizes: *MALIBU 12* (~1.5mm): coarse sand-like finish with slight worm driven appearance; *MALIBU 16* (~1.2mm): medium sand-like finish with slight worm driven appearance; *MALIBU 20* (~0.8mm): fine sand-like finish with reflective quartz aggregate; *MALIBU FINE* (~0.8mm): imperfect smooth-type finish with irregularities.

Coverage
 Approximately 100ft² to 140ft² (9.3m² to 13.0m²). Coverage may vary.
Packaging
 65 lb (29.5 kg), 5 gallon (18.9 L) pails
Pallets
 32 – 5 gal. pails per pallet, 2,080 lbs (942 kg) net †
Shelf Life
 2 years
Color
 Packaged white and may be colored using the Omega Color Bottle System.
SKU **TYPE**
See Price List **5 gal. Pail**



AkroFlex Semi-Smooth Finishes
 100% acrylic-based finish using the latest Dirt Pick-up Resistance (DPR) technology, which can produce a variety of textures depending on the application method. Semi-Smooth Finish will enhance the appearance of any plastered structure by providing a flexible, durable, integrally colored finish. Semi-Smooth Finish utilizes approximately 0.3mm aggregates and can be troweled to achieve an imperfect smooth Mission-style finish or Old World appearance.
Coverage
 Approximately 130ft² to 150ft² (12.1m² to 13.9m²). Coverage may vary.

Packaging
 65 lb (29.5 kg), 5 gallon (18.9 L) pails
Pallets
 32 – 5 gal. pails per pallet, 2,080 lbs (942 kg) net †
Shelf Life
 2 years
Color
 Packaged white and may be colored using the Omega Color Bottle System.
SKU **TYPE**
See Price List **5 gal. Pail**



AkroFlex Delta Finishes
 100% acrylic-based finish using the latest Dirt Pick-up Resistance (DPR) technology, which can produce a variety of textures depending on the application method. Delta Finish will enhance the appearance of any plastered structure by providing a flexible, durable, integrally colored finish. Delta Finish utilizes approximately 1.5mm aggregates and can be utilized to create a medium sand-like finish or lace texture.
Coverage
 Approximately 90ft² to 120ft² (8.4m² to 11.2m²). Coverage may vary.

Packaging
 65 lb (29.5 kg), 5 gallon (18.9 L) pails
Pallets
 32 – 5 gal. pails per pallet, 2,080 lbs (942 kg) net †
Shelf Life
 2 years
Color
 Packaged white and may be colored using the Omega Color Bottle System.
SKU **TYPE**
See Price List **5 gal. Pail**



AkroFlex CircleTex Finishes
 100% acrylic-based finishes using the latest Dirt Pick-up Resistance (DPR) technology, CircleTex Finishes can be utilized to produce a true worm driven appearance. CircleTex Finishes will enhance the appearance of any plastered structure by providing a flexible, durable, integrally colored finish and are available in the following finishes: *MEDIUM* (~1.5mm) or *COARSE* (~3mm).
Coverage
 Approximately 90ft² to 120ft² (8.4m² to 11.2m²). Coverage may vary.

Packaging
 65 lb (29.5 kg), 5 gallon (18.9 L) pails
Pallets
 32 – 5 gal. pails per pallet, 2,080 lbs (942 kg) net †
Shelf Life
 2 years
Color
 Packaged white and may be colored using the Omega Color Bottle System.
SKU **TYPE**
See Price List **5 gal. Pail**

AkroFlex Desert Series Finishes

Pebble Beach and Sahara Sand finishes are 100% acrylic-based using the latest Dirt Pick-up Resistance (DPR) technology, which can produce a variety of textures depending on the aggregate size and application method. Desert Series Finishes will enhance the appearance of any plastered structure by providing a flexible, durable, integrally colored finish. Desert Series Finishes utilize silica aggregates and are available in the following finishes:

- SAHARA SAND FINE (~0.8mm): uniform fine sand-like finish.
 - SAHARA SAND (1.0mm): uniform med. to fine sand-like finish.
 - PEBBLE BEACH (~1.5mm): uniform med. sand-like finish.
- Not available in all markets

Coverage

Approximately 90ft² to 140ft² (8.4m² to 13.0m²)
Coverage may vary.

Packaging

65 lb (29.5 kg), 5 gallon (18.9 L) pails

Pallets

32 – 5 gal. pails per pallet, 2,080 lbs (942 kg) net †

Shelf Life

2 years

Color

Packaged white and may be colored using the Omega Color Bottle System. Desert Series Finishes require special color formulations. Standard Omega color bottles will not produce accurate colors. To be sure you have the correct color bottle for your Desert Series Finish, look for the distinctive red cap.

SKU

TYPE

See Price List Pebble Beach 5 gal. Pail

See Price List Sahara Sand 5 gal. Pail



AkroLastic Finishes

A 100% acrylic-based, elastomeric, textured finish. AkroLastic Finishes provide enhanced elasticity and a weather-resistant finish, which will enhance the appearance of any plastered structure. AkroLastic Finishes help bridge the hairline structural and shrinkage cracks inherent in traditional portland cement-based plaster construction. Available in all AkroFlex texture options. AkroLastic Finishes are designed to be used with the AkroFlex EIF Systems and also as an interior or exterior finish.

Coverage

Approximately 100ft² to 140ft² (9.3m² to 13.0m²)
Coverage may vary.

Packaging

65 lb (29.5 kg), 5 gallon (18.9 L) pails

Pallets

32 – 5 gal. pails per pallet, 2,080 lbs (942 kg) net †

Shelf Life

2 years

Color

Packaged white and may be colored using the Omega Color Bottle System.

SKU

TYPE

See Price List 5 gal. Pail



AkroLastic ProPlus Finishes

AkroLastic ProPlus Finishes are 100% acrylic-based, elastomeric, textured finishes that use the latest Dirt Pick-up Resistance (DPR) technology. They provide improved elasticity, weather resistance, and stain resistance than standard acrylic finishes. AkroLastic ProPlus Finishes help bridge the hairline structural and shrinkage cracks inherent in traditional portland cement-based plaster construction. Available in the following finishes: COARSE (~1.5mm): Heavy sand-like finish; MEDIUM (~0.8mm): Medium sand-like finish; FINE (~0.3mm): Imperfect smooth-type finish.

Coverage

Approximately 90ft² to 140ft² (8.4m² to 13.0m²)
Coverage may vary.

Packaging

65 lb (29.5 kg), 5 gallon (18.9 L) pails

Pallets

32 – 5 gal. pails per pallet, 2,080 lbs (942 kg) net †

Shelf Life

2 years

Color

Packaged white and may be colored using the Omega Color Bottle System

SKU

TYPE

See Price List 5 gal. Pail



OmegaFlex Finishes

100% acrylic-based finishes using the latest Dirt Pick-up Resistance (DPR) technology that are formulated with high-quality acrylic resins, graded aggregates, and proprietary additives. They provide a flexible, durable, integrally colored finish, which will enhance the appearance of any plastered structure. OmegaFlex Finishes may be sprayed or troweled to achieve a variety of texture options and are available in the following finishes: COARSE (~1.5mm): heavy sand-like finish; MEDIUM (~0.8mm): medium sand-like finish; FINE (~0.3mm): imperfect smooth-type finish; ideal for AkroTique; SWIRL MEDIUM (~1.5mm): Medium random swirl pattern; SWIRL COARSE (~3mm): Heavy random swirl pattern.

Coverage

Approximately 110ft² to 190ft² (10.2m² to 17.7m²)
Coverage may vary.

Packaging

65 lb (29.5 kg), 5 gallon (18.9 L) pails

Pallets

32 – 5 gal. pails per pallet, 2,080 lbs (942 kg) net †

Shelf Life

2 years

Color

Packaged white and may be colored using the Omega Color Bottle System.

SKU

TYPE

See Price List 5 gal. Pail





RynoTex

An acrylic-based, textured coating that may be roller or spray applied to create a light to heavy sand textured appearance. Using the latest dirt pick-up resistant (DPR) technology, RynoTex creates a long-lasting, low maintenance, integrally colored finish over a variety of approved substrates. RynoTex is available in the following textures: *COARSE*: Heavy sand-like finish; *MEDIUM*: Medium sand-like finish; *FINE*: Fine sand-like finish.

Coverage

Approximately 350ft² to 700ft² (32.5m² to 65m²). Coverage may vary.

Packaging

55 lb (25 kg), 5 gallon (18.9 L) pails

Pallets

32 – 5 gal. pails per pallet, 1,760 lbs (798 kg) net †

Shelf Life

2 years

Color

Packaged white and may be colored using the Omega Color Bottle System.

SKU

See Price List **5 gal. Pail** **TYPE**



AkroCoat

A 100% acrylic-based coating that provides a long-lasting, integrally colored finish, AkroCoat offers excellent efflorescence and alkali resistance on cement-based surfaces such as stucco or masonry with a pH up to 13. Breathable with great dirt pickup resistance, AkroCoat will enhance the appearance of any properly prepared, approved substrate.

Coverage

Approximately 100ft² to 450ft² (9.3m² to 41.8m²) per gallon. Coverage may vary.

Packaging

55 lb (24.9 kg), 5 gallon (18.9 L) pails

Pallets

32 – 5 gal. pails per pallet, 1,760 lbs (797 kg) net †

Shelf Life

2 years

Color

Packaged white and may be colored using the Omega Color Bottle System.

SKU

See Price List **5 gal. Pail** **TYPE**



Elastomeric 44

A 100% acrylic-based, elastomeric coating that provides enhanced elasticity, improved weather resistance, and can help to prevent the reoccurrence of hairline cracking. Elastomeric 44 will enhance the appearance of any approved substrate. Elastomeric 44 is designed for professional results as an interior/exterior coating over a variety of substrates in residential or industrial structures. For best results, substrates should be prepared with Omega AkroFlex Base Primer.

Coverage

Approximately 250ft² to 400ft² (23.2m² to 37.2m²) per pail, at 20 mils wet thickness. Coverage may vary.

Packaging

50 lb (22.7 kg), 5 gallon (18.9 L) pails

Pallets

32 – 5 gal. pails per pallet, 1,600 lbs (724 kg) net †

Shelf Life

2 years

Color

Packaged white and may be colored using the Omega Color Bottle System.

SKU

See Price List **5 gal. Pail** **TYPE**



AkroTique

A pigmented acrylic sealer designed to create a rustic, mottled finish similar to the timeless beauty of century old plaster. AkroTique offers an “Old World” look that does not take a lifetime to create. AkroTique also can be used without color as a sealer. AkroTique may be applied to: AkroFlex and OmegaFlex finishes, ColorTek stucco and other approved cementitious substrates, poured-in-place and/or tilt-up concrete, properly prepared interior/exterior painted surfaces and Valentino lime-based finishes.

Coverage

Approximately 300ft² to 1,000ft² (27.9m² to 92.9m²) per gallon, per coat. Coverage may vary.

Packaging

1 gallon (3.8 L) pre-mixed only,
5 gallon (18.9 L)

Pallets

32 – 5 gal. pails per pallet, 1,280 lbs (579 kg) net †

Shelf Life

2 years

Color

1 gallon: Pre-mixed with color.
5 gallon: Packaged clear and may be colored using AkroTique Color Bottles.

SKU

X100-0087 **1 gal. Premixed**
X100-0086 **5 gal. Pail** **TYPE**



RapidPrime

(Replaces OmegaFlex Base Primer)

Formulated for use as a priming agent under all Omega acrylic-based textured finishes, coatings, and similar products to promote bond strength, color consistency, and uniform suction, while increasing water-resistance and finish coverage. It offers excellent efflorescence and alkali resistance on cement-based surfaces with a pH up to 13, such as new stucco, concrete, and masonry. With its high alkali resistance, RapidPrime can be applied without having to wait for the cement-based substrate to drop in pH, thus saving time and money.

Coverage

Approximately 1,400ft² to 2,000ft² (130m² to 185m²) per pail. Coverage may vary.

Packaging

55 lb (24.9 kg), 5 gallon (18.9 L) pails

Pallets

32 – 5 gal. pails per pallet, 1,760 lbs (797 kg) net †

Shelf Life

2 years

Color

Packaged white and may be colored using the Omega Color Bottle System

SKU

TYPE

See Price List 5 gal. Pail



AkroFlex Base Primer

Formulated for use as a priming agent under all AkroFlex Finishes to promote bond strength, color consistency, and uniform suction, while increasing water resistance and finish coverage. AkroFlex Base Primer Sanded is also available to create a fine sand texture when applied to the substrate.

Coverage

Approximately 1,400ft² to 2,000ft² (130.1m² to 185.8m²) per pail. Coverage may vary.

Packaging

55 lb (24.9 kg), 5 gallon (18.9 L) pails

Pallets

32 – 5 gal. pails per pallet, 1,760 lbs (797 kg) net †

Shelf Life

2 years

Color

Packaged white and may be colored using the Omega Color Bottle System

SKU

TYPE

See Price List 5 gal. Pail



Color Bottle System

A factory blended, premixed liquid coloring system providing an accurate method for adding pigments to the AkroFlex Finishes, OmegaFlex Finishes, and other approved Omega products that require liquid integral color. For AkroFlex Finishes, OmegaFlex Finishes, and StyroGlue TF use one bottle per pail.* For AkroFlex Base Primer and Omega RapidPrime use two bottles per pail.*

* Some colors may require two bottles per finish pail and four bottles per primer pail.

Packaging

4 fl oz (118 mL), 8 fl oz (236 mL) or 16 fl oz (473 mL) bottles

Shelf Life

1 year

Color

Available in a wide variety of colors. See a current Omega Acrylic Color Charts for stock colors available. Custom colors are available upon request.

SKU

TYPE

See Price List Bottle



OMEGA IS ALL ABOUT COLORS

Omega state of the art color labs can match any color in the industry



Use the online Omega Sample Request System. It is the fastest and easiest method to order a sample.





WATER-RESISTIVE BARRIERS



Better than building paper/wraps

AkroGuard

A flexible, liquid-applied coating that creates a water-resistant air barrier when used as part of the AkroGuard System. AkroGuard is field applied and designed for use as a water-resistant barrier (WRB) and vapor-permeable barrier that seamlessly wraps the structure. It can be applied over a variety of substrates and be used under different wall systems, including AkroFlex EIFS, stucco, brick, stone veneer, or siding. It is used in conjunction with AkroGuard Fabric, a reinforced, non-woven polyester fabric to treat and reinforce joints, corners, rough openings, and other transitions within the AkroGuard WB-AB Assembly. The AkroGuard System complies with ICC-ES acceptance criteria for water-resistant coatings (AC212) and ASTM standards as an air barrier.

Coverage

Approximately 300ft² to 650ft². Coverage may vary.

Packaging

60 lb (27.2 kg), 5 gallon (18.9 L) pails

Pallets

32 – 5 gal. pails per pallet, 2,240 lbs (1,0164 kg) net †

Shelf Life

2 years

Color

Red

SKU

X100-0006 **5 gal. Pail** TYPE



AkroFill

A non-cementitious, ready-mixed, flexible joint compound manufactured with high-grade fiber fillers and 100% acrylic polymers. AkroFill is a trowel applied, flexible joint compound designed to bridge sheathing joints and rough openings when used in conjunction with embedded Omega Starter Mesh. When used as part of the AkroGuard System, it creates a weather-resistant air barrier over approved substrates.

Coverage

Approximately 170 to 240 linear feet of sheathing joints and rough openings. Coverage may vary.

Packaging

56 lb (25.4 kg), 5 gallon (18.9 L) pails

Pallets

32 – 5 gal. pails per pallet, 1,792 lbs (811 kg) net †

Shelf Life

2 years

Color

Red

SKU

X100-0007 **5 gal. Pail** TYPE



OmegaBlock

A cementitious waterproof coating that is a premium, one component cementitious coating designed to waterproof concrete and masonry. It is manufactured with cement, sand, polymers and other proprietary components that combine superior waterproofing qualities with the durability of a cement coating that becomes a part of the substrate. OmegaBlock is easily applied using a roller, brush, trowel or a sprayer.

Coverage

Approximately 225 ft² (20.9 m²) at a 1/16 inch coat. Coverage may vary.

Packaging

50 lb (22.6 kg) bags

Pallets

56 – 50 lb bags per pallet, 2,800 lbs (1,268 kg) net †

Shelf Life

1 year

Color

Light grey.

SKU

X070-0039 **50 lb. Bag** TYPE



AKROGUARD

Water-Resistive Air Barrier Assembly



Omega Products International's AkroGuard is an assembly of water-resistant air barrier (WR-AB) materials that offers superior protection against water and air intrusion. Spray, roll, or brush applied, AkroGuard is easy to apply, seamless, and durable.

AkroFlex Reinforcing Mesh

Alkali-resistant, woven glass fiber fabrics specially designed to be used with AkroFlex EIF Systems and other approved Omega base coats.

Ultra Heavy Duty Mesh (20oz): For locations needing the highest impact resistance, such as ground floors and high traffic areas.

Heavy Duty Mesh (15oz): For locations needing high impact resistance, such as ground floors and other higher traffic areas.

Intermediate Mesh (11.5oz): For locations needing additional impact resistance, such as medium traffic areas.

Standard Mesh (4.2oz): For locations needing standard impact resistance, such as second stories or other low traffic areas where impact is unlikely.

Starter Mesh (4.2 oz.): For back wrapping and detail work.

- Starter Mesh:** 4.2oz, 118ft² (11.0m²), 9.5"x150' roll **X470-0000** SKU
- Starter Mesh:** 4.2oz, 475ft² (44.1m²), 38"x150' roll **X470-0001**
- Standard Mesh** 4.2oz, 600ft² (55.7m²), 48"x150' roll **X470-0002**
- Intermediate Mesh:** 11.5oz, 475ft² (44.1m²), 38"x150' roll **X470-0009**
- Heavy Duty Mesh:** 15oz, 237ft² (22.0m²), 38"x75' roll **X470-0004**
- Ultra Heavy Duty Mesh:** 20oz, 225ft² (20.9m²), 38"x75' roll **X470-0005**



Omega Detail Reinforcing Mesh

Light weight, alkali-resistant, woven fiberglass fabric designed for use in architectural foam shapes.

- 2oz, 450ft² (41.8m²), 36"x150' roll **X470-0007** SKU
 - 2oz, 112.5ft² (10.5m²), 9"x150' roll **X470-0006**
- FOR FOAM SHAPES ONLY**

Crack Isolation Reinforcing Mesh

Alkali-resistant, woven fiberglass fabric designed for use in the Crack Isolation Systems.

NOT FOR EIFS

- CI-Mesh Standard Mesh:** 4.5oz, 475ft² (44.1m²), 38"x150' roll **X470-0010** SKU
- CI-Mesh Starter Mesh:** 4.5oz, 118ft² (11.0m²), 9.5"x150' roll **X470-0013**



AkroGuard Fabric

AkroGuard Fabric is a reinforced, non-woven polyester fabric that is specially designed for use in the AkroGuard Water-Resistive Air Barrier (WR-AB) Assembly. When fully embedded in AkroGuard coating, the AkroGuard Fabric treats and reinforces joints, corners, rough openings, and other transitions within the AkroGuard WB-AB Assembly.

- 4"x180' roll (54 rolls/case) **X470-0014** SKU
- 9"x180' roll (24 rolls/case) **X470-0015**



VISIT OMEGA ON THE WEB

For additional information please visit our websites at:

Omega-Products.com

SienaProducts.com

ValentinoProducts.com



- Complete, updated products catalogs
- Downloadable product data including:
 - Product and system data sheets
 - Specifications in Word format
 - Details in AutoCAD or pdf formats
- Technical bulletins
- Color and textures, including online samples request
- Warranty information, including downloadable request forms
- Project photo galleries

Please contact us to schedule an AIA presentation, a product knowledge (PK) class, or a live product demonstration



Admix 500

Admix 500 is a 100% acrylic polymer admixture for cementitious products. Admix 500 is used to increase tensile, bond, and flexural strength of approved products. Admix 500 may be added to the following products: cementitious stucco, approved cement-based products, liquid component in a sand/cement slurry coat, scratch and brown coats and scrub coat.

NOTE: Contact an Omega representative for use in other products.

Packaging

1 gallon (3.8 L) bottles, 4 per case
5 gallon (18.9 L) pails

Pallets

128 – 1 gal. bottles per pallet, 1,075 lbs (487 kg) net †
32 – 5 gal. pails per pallet, 1,344 lbs (609 kg) net †

Shelf Life

2 years

Color

White liquid, dries clear

SKU	TYPE
X200-0006	1 gal. Bottle
X200-0008	5 gal. Pail



AkroLoc

AkroLoc is a 100% acrylic polymer bonder or admixture for cementitious products. AkroLoc can be used in bonding new cement-based products to a variety of existing properly prepared substrates and as an admixture to reduce cracking and increase tensile, bond, and flexural strength of approved products. As a bonding agent over: one coat products, plaster brown coats, and stucco, CMU, masonry, poured-in-place and/or tilt-up concrete, approved Omega base coats and approved cement-based products. As an admix in: Approved cement-based products and as a liquid component in a sand/cement slurry coat.

Coverage

Approximately 100ft² to 400ft² (9.3m² to 37.2m²) per gallon as a bonder. Coverage may vary.

Packaging

1 gallon (3.8 L) bottles, 4 per case
5 gallon (18.2 L) pails

Pallets

128 – 1 gal. bottles per pallet, 1,075 lbs (487 kg) net †
32 – 5 gal. pails per pallet, 1,344 lbs (609 kg) net †

Shelf Life

2 years

Color

White liquid, dries clear

SKU	TYPE
X200-0003	1 gal. Bottle
X200-0004	5 gal. Pail



PolyLoc

PolyLoc is a poly-vinyl acetate (PVA) based bonder or admixture for cementitious or gypsum plaster products. PolyLoc can be used in bonding new cement-based or gypsum-based products to a variety of existing, properly prepared substrates and as an admixture to increase tensile, bond, and flexural strength of approved products. As a bonding agent over: one coat products, plaster brown coats, and stucco, CMU, poured-in-place and/or tilt-up concrete, masonry, approved Omega base coats, acrylic or water-based paints and gypsum drywall, gypsum-based plasters and mortar setting beds or grout. As an admix in approved cement-based products.

Coverage

Approximately 200ft² to 300ft² (18.6m² to 27.9m²) per gallon as a bonder. Coverage may vary.

Packaging

1 gallon (3.8 L) bottles, 4 per case
5 gallon (18.2 L) pails

Pallets

128 – 1 gal. bottles per pallet, 1,075 lbs (487 kg) net †
32 – 5 gal. pails per pallet, 1,344 lbs (609 kg) net †

Shelf Life

2 years

Color

White liquid, dries clear

SKU	TYPE
X200-0000	1 gal. Bottle
X200-0001	5 gal. Pail



OmegaCure

OmegaCure is a non-corrosive, liquid admixture used to accelerate the hydration of portland cement-based materials. A more advanced hydration state will result in higher early strength, faster hardening, higher abrasion resistance, reduced void content, and decreased water movement within the cement matrix. OmegaCure may be added to the following products: one coat stucco, scratch and brown coat, cementitious finish coats, cement plasters, and other approved cementitious products.

Packaging

1 gallon (3.8 L) bottles, 4 per case
5 gallon (18.9 L) pails

Pallets

128 – 1 gal. bottles per pallet, 1,434 lbs (649 kg) net †
32 – 5 gal. pails per pallet, 1,792 lbs (812 kg) net †

Shelf Life

2 years

Color

White liquid, dries clear

SKU	TYPE
X200-0013	1 gal. Bottle
X200-0014	5 gal. Pail



AquaShield

AquaShield is a powdered admixture designed to increase the water resistance of ColorTek Stucco, mortar, or other approved cementitious products. AquaShield is added during mixing and offers the benefit of long-lasting water-resistance, improved stain resistance, and reduced efflorescence without the extra time and expense of applying a sealer. AquaShield may be added to the following products: ColorTek Stucco, mortar, and other approved cement-based products.

Packaging

1 lb (0.45 kg) package, 36 per case

Shelf Life

2 years

Color

White powder

SKU

X200-0018 1 lb. Package

TYPE



E-FX Admix

E-FX Admix is designed to help reduce efflorescence and improve the performance in approved cement-based stucco products. When added to the material, E-FX Admix will offer long-lasting protection from the elements while retaining the surface's natural appearance and vapor permeability. E-FX Admix may be added to the following products: OmegaCoat, fog coat products, ColorTek Stucco, cement-based stucco products, and other approved cement-based products.

Packaging

4 fl oz (118 mL) bottles, 16 per case

1 gallon (3.8L) bottles

Shelf Life

Minimum of 1 year. Depending on storage conditions, the shelf life may be greater than stated.

Color

Milky light-brown

SKU

X040-0006 4 fl. oz. Bottle

X040-0009 1 gal. Bottle

TYPE



BondCrete

BondCrete is a superior liquid bonding agent composed of a polyvinyl acetate homopolymer resin specially designed to bond new portland cement-based and gypsum plaster products to existing properly prepared cement-based substrates. As a bonding agent over: one coat products, brown coat, stucco, masonry, poured-in-place and/or tilt-up concrete, approved Omega base coats, gypsum plaster, acrylic or water-based paints, mortar setting beds, fast set mortar, and grout.

Packaging

1 gallon (3.8 L) bottles, 4 per case

5 gallon (18.2 L) pails

Pallets

128 – 1 gal. bottles per pallet, 1,075 lbs (487 kg) net †

32 – 5 gal. pails per pallet, 1,344 lbs (609 kg) net †

Shelf Life

2 years

Color

Gold color to ensure proper coverage.

SKU

X200-0009 1 gal. Bottle

X200-0010 5 gal. Pail

TYPE



Coverage

Approximately 250ft² to 600ft² (23.2m² to 55.7m²) per gallon. Coverage may vary.

	PolyLoc	AkroLoc	Admix 500
Technology	PVA	100% Acrylic	100% Acrylic
Area of Use	Cement-based products: • Stucco • Concrete • Mortar • Sand/cement slurry coat Gypsum-based products	Cement-based products: • Stucco • Concrete • Mortar • Sand/cement slurry coat	Cement-based products: • Stucco • Concrete • Mortar • Sand/cement slurry coat
Other Features			Easy 1:1 admix to water ratio for most products

ADMIXES

BONDERS

	Bond-Crete	PolyLoc	AkroLoc
Technology	PVA	PVA	100% Acrylic
Area of Use	Cement-based products: • Stucco • Concrete • Mortar • Sand/cement slurry coat Gypsum Plaster	Cement-based products: • Stucco • Concrete • Mortar • Sand/cement slurry coat Gypsum Plaster	Cement-based products: • Stucco • Concrete • Mortar • Sand/cement slurry coat
Color	Gold color for coverage indication	White liquid, dries clear	White liquid, dries clear
Application	Apply up to 10 days prior to material	Apply up to 10 days prior to material	Apply bonding material while AkroLoc is still tacky.
Re-emulsifying	Yes	Yes	No
Standards	ASTM C932		



OmegaGuard

OmegaGuard is a silicon-based, clear, non-yellowing water repellent designed to seal porous, cement-based substrates such as stucco, brick, masonry, and other concrete surfaces. OmegaGuard will offer long-lasting protection from the elements while retaining the surface's natural appearance and vapor permeability. OmegaGuard may be applied over the following substrates: stucco, masonry, poured-in-place and/or tilt-up concrete, cementitious surfaces, approved interior products, porous tile, brick, stone, and slate.

Coverage

100ft² to 300ft² (9.3m² to 27.9m²) per gal. Coverage may vary.

Packaging

1 gallon (3.8 L) bottles, 4 per case
5 gallon (18.9 L) pails

Pallets

128 – 1 gal. bottles per pallet, 1,088 lbs (493 kg) net †
32 – 5 gal. pails per pallet, 1,344 lbs (609 kg) net †

Shelf Life

2 years

Color

Clear, colorless liquid

SKU

X200-0016 1 gal. Bottle
X200-0015 5 gal. Pail

TYPE



OmegaGuard Plus

OmegaGuard Plus is a silane/siloxane-based, clear, non-yellowing water repellent designed to seal porous substrates such as stucco, brick, natural and manufactured stone, masonry, concrete, and other cement-based vertical or horizontal surfaces. OmegaGuard Plus deeply penetrates the surface for long-lasting protection from the elements, water-based stains, and some oil-based stains while retaining the surface's natural appearance and vapor permeability.

Coverage

Approximately 100ft² to 200ft² (9.3m² to 18.6m²) per gallon. Coverage may vary.

Packaging

1 gallon (3.8 L) bottles, 4 per case
5 gallon (18.9 L) pails

Pallets

128 – 1 gal. bottles per pallet, 1,075 lbs (487 kg) net †
32 – 5 gal. pails, net per pallet, 1,360 lbs (616 kg) net †

Shelf Life

2 years

Color

White liquid, dries clear

SKU

X200-0020 1 gal. Bottle
X200-0021 5 gal. Pail

TYPE



OmegaSeal 1000

OmegaSeal 1000 is an acrylic-based, clear, non-yellowing sealer for use over a variety substrates, including stucco, acrylic finishes, masonry, and other concrete surfaces. When properly applied, OmegaSeal 1000 forms a continuous protective film over the substrate's surface to offer long-lasting protection from the elements. OmegaSeal 1000 may be applied over the following substrates: stucco, masonry, poured-in-place and/or tilt-up concrete, cementitious surfaces, approved interior products, porous tile, brick, stone, and slate, acrylic-based finishes and coatings.

Coverage

Approximately 100ft² to 800ft² (9.3m² to 74.3m²) per gallon. Coverage may vary.

Packaging

1 gallon (3.8 L) bottles, 4 per case
5 gallon (18.9 L) pails

Pallets

128 – 1 gal. bottles, net per pallet, 1,075 lbs (487 kg) net †
32 – 5 gal. pails, net per pallet, 1,344 lbs (609 kg) net †

Shelf Life

2 years

Color

White liquid, dries clear

SKU

X100-0096 1 gal. Bottle
X100-0095 5 gal. Pail

TYPE

ADMIXES

	OmegaCure	E-FX Admix	AquaShield
Description	Accelerator to improve curing	Efflorescence reducing admix for cement-based products	Water repellent admix for stucco and mortar
Area of Use	<ul style="list-style-type: none"> One coat stucco Scratch and brown coat Cement-based finish coats Cement plasters Other approved cementitious products 	<ul style="list-style-type: none"> Cement-based finishes Cement-based fog coat 	<ul style="list-style-type: none"> ColorTek Stucco Mortar Other cement-based products
Other Features	<ul style="list-style-type: none"> Accelerates the cement hydration Allows cold weather applications Increases early strength and hardness Non-corrosive 	<ul style="list-style-type: none"> Reduces efflorescence Retains natural appearance 	<ul style="list-style-type: none"> Increase water-resistance Improves freeze/thaw resistance Retains natural appearance No extra application steps(s)

SEALERS

	OmegaGuard	OmegaGuard Plus	OmegaSeal 1000
Technology	Silicon-based	Silane/Siloxane	Acrylic-based sealer
Area of Use	Vertical, porous materials such as stucco, masonry, or stone	Vertical or horizontal, porous materials such as stucco, masonry, stone, or cement	Vertical, cement-based materials, stone, or acrylic surfaces
Method of Sealing	Penetrates into the surface pores	Penetrates into the surface pores	Creates continuous protective film on surface
Appearance	Natural	Natural	Slight sheen
Stain Resistance	Water-based stains	Water-based stains Some oil-based stains	Water-based stains Oil-based stains
Can be Painted After Application?	No	Yes	Yes

Stucco Cleaner

From the leading manufacturer of stucco products, Omega Stucco Cleaner is designed to dissolve dirt and some stains from stucco walls and similar products. It is a concentrated, water-based detergent that will penetrate the surface to help remove stains without damaging the finish. Regular cleaning of stucco walls will keep them looking new for many years.

Coverage

Up to 1,000ft² (93m²) per 32 oz. Coverage may vary.

Packaging

32 fl oz spray bottles – 6 per case
1 gal bottles – 4 per case

Pallets

192 – 32 fl. oz. bottles per pallet, 441 lbs (200 kg) net †

128 – 1 gal. bottles per pallet, 1,075 lbs (487 kg) net †

Shelf Life

1 year

Color

Red

Odor

Orange-Citrus

SKU

X200-0019 32 fl. oz. Bottle

X200-0022 1 gal. Bottle

TYPE



ATTENTION BUILDING MATERIAL DEALERS
If your customers are installing stucco, stone or masonry . . .
OMEGA's ABC'S are the perfect companion products.

Admixtures are used in cement-based products to improve the performance of various properties, such as tensile/bond/flexural strength, water resistance, and early strength.

Bonders are used to adhere new concrete, portland cement plaster, mortars, other cementitious products, and gypsum plaster mixes to structurally sound substrates.

Cleaners are used to clean and maintain the appearance of surfaces, including stucco, painted stucco, acrylic textured finishes, along with stone, masonry, concrete, and all types of siding.

Sealers are used over approved surfaces to increase weatherability, provide moisture protection, and resist staining while protecting the substrate against freeze-thaw cycles and allowing for easy maintenance.

ASK YOUR OMEGA REP FOR AN IN-STORE DISPLAY.



MAVS 1000

MAVS 1000 is a polymer-modified, factory blended mortar specifically designed for bonding thin natural stone and manufactured veneers. This bonding mortar is a mixture of portland cement, specialty polymers, aggregate, and other proprietary additives. The advanced technology and high quality ingredients gives MAVS 1000 excellent workability, greater sag and efflorescence resistance, and superior bond strength than standard Type S or field mixed mortars. MAVS 1000 is an excellent choice for some of the more challenging masonry applications, such as stacked stone.

Coverage

Trowel Size	1/4" x 1/4"	1/4" x 3/8"	1/2" x 1/2"	Masonry Method
FT ²	85-95	55-65	40-50	25-35

Coverage may vary.

Packaging

50lb (22.7kg) bags

Pallets

56 – 50 lb bags per pallet, 2,800 lbs (1,270 kg) net †

Shelf Life

1 year

Color

Grey, white, off white, and tan. Available in standard and custom colors; addition charges may apply.

SKU

TYPE

See Price List 50lb. Bag



MAVS 2000

MAVS 2000 is a premium, polymer-modified, factory blended mortar specifically designed for bonding natural and manufactured veneers, precast, most tile, and thin brick. This bonding mortar is a mixture of portland cement, specialty polymers, aggregate, and other proprietary additives that give MAVS 2000 excellent workability and sag resistance with greater efflorescence resistance and bond strength than standard Type S mortars. MAVS 2000's advanced technology improves adhesion and is an excellent option for more challenging masonry applications, such as stacked stone and large or heavy veneers.

Coverage

Trowel Size	1/4" x 1/4"	1/4" x 3/8"	1/2" x 1/2"	Masonry Method
FT ²	85-95	55-65	40-50	25-35

Coverage may vary.

Packaging

50lb (22.7kg) bags

Pallets

56 – 50 lb bags per pallet, 2,800 lbs (1,270 kg) net †

Shelf Life

1 year

Color

Grey, white, off white, and tan. Available in standard and custom colors; addition charges may apply.

SKU

TYPE

See Price List 50lb. Bag



MAVS 3000

MAVS 3000 is a highly polymer-modified, factory blended mortar specifically designed for bonding natural stone, manufactured veneers, precast, most tile, and thin brick. This bonding mortar is a mixture of portland cement, specialty polymers, aggregate, and other proprietary additives that give MAVS 3000 excellent workability and sag resistance with greater efflorescence resistance and bond strength than standard Type S or slightly modified mortars. MAVS 3000 advanced technology improves adhesion and is an excellent option for the most challenging veneer applications, such as large format and heavy veneers.

Coverage

Trowel Size	1/4" x 1/4"	1/4" x 3/8"	1/2" x 1/2"	Masonry Method
FT ²	85-95	55-65	40-50	25-35

Coverage may vary.

Packaging

50lb (22.7kg) bags

Pallets

56 – 50 lb bags per pallet, 2,800 lbs (1,270 kg) net †

Shelf Life

1 year

Color

Grey, white, off white, and tan. Available in standard and custom colors; addition charges may apply.

SKU

TYPE

See Price List 50lb. Bag



MAVS Masonry Mortar & Grout

MAVS Masonry Mortar & Grout is manufactured with portland cement, lime, masonry aggregates and other proprietary additives to produce a high quality masonry mortar. It is used for grouting interior and exterior applications of most natural and manufactured veneers, thin brick, pavers, brick, tile, stone, precast, and block. MAVS Masonry Mortar & Grout may also be used to set full brick and block units. Omega AkroLoc or Siena Admix AX100 latex admixtures can be used to impart greater flexibility, improve bond strength, increase water retention, and surface appearance.

Coverage

Approximately 45 ft² (4.2 m²) per bag on a 6" x 12" veneer with a 1/2" x 1/2" grout joint.

Coverage may vary.

Packaging

50lb (22.7kg) bags

Pallets

56 – 50 lb bags per pallet, 2,800 lbs (1,270 kg) net †

Shelf Life

1 year

Color

Grey, white, off white, and tan. Available in standard and custom colors; addition charges may apply.

SKU

TYPE

See Price List 50lb. Bag

MAVS Adhesive Sealant

MAVS Adhesive Sealant is a professional grade, fast drying, non-sag sealant for use in expansion joints for masonry, stone, tile and other applications. It is available in hundreds of colors in either sanded or smooth texture to match the specific application needed. It is paintable, mold and mildew resistant, and adheres to multiple types of substrates. MAVS Adhesive Sealant can be used on: brick, block, natural stone, concrete, porcelain & ceramic tile, steel, aluminum, glass, wood, plastic, vinyl, and fiberglass. Conforms to ASTM C920 Type S, Grade NS, Class 50, Use T, M, G, A, O & TT-S-230C, Type II, Class A.

Coverage

A 10.3 fl oz. tube will approximately covers 24 lineal feet in a 1/4" x 1/4" joint, and 12 lineal feet in a 1/4" x 1/2" joint.

Coverage may vary due to actual joint size, depth and application.

Packaging

10.3 fl oz tube, 10 tubes per case, two case (20 tube) minimum.

Shelf Life

6 months

Color

Available in standard and custom colors, in sanded or smooth texture.

SKU	TYPE
X1131-0300	10.3 fl. oz. Bottle (Sanded)
X1131-0400	10.3 fl. oz. Bottle (Smooth)

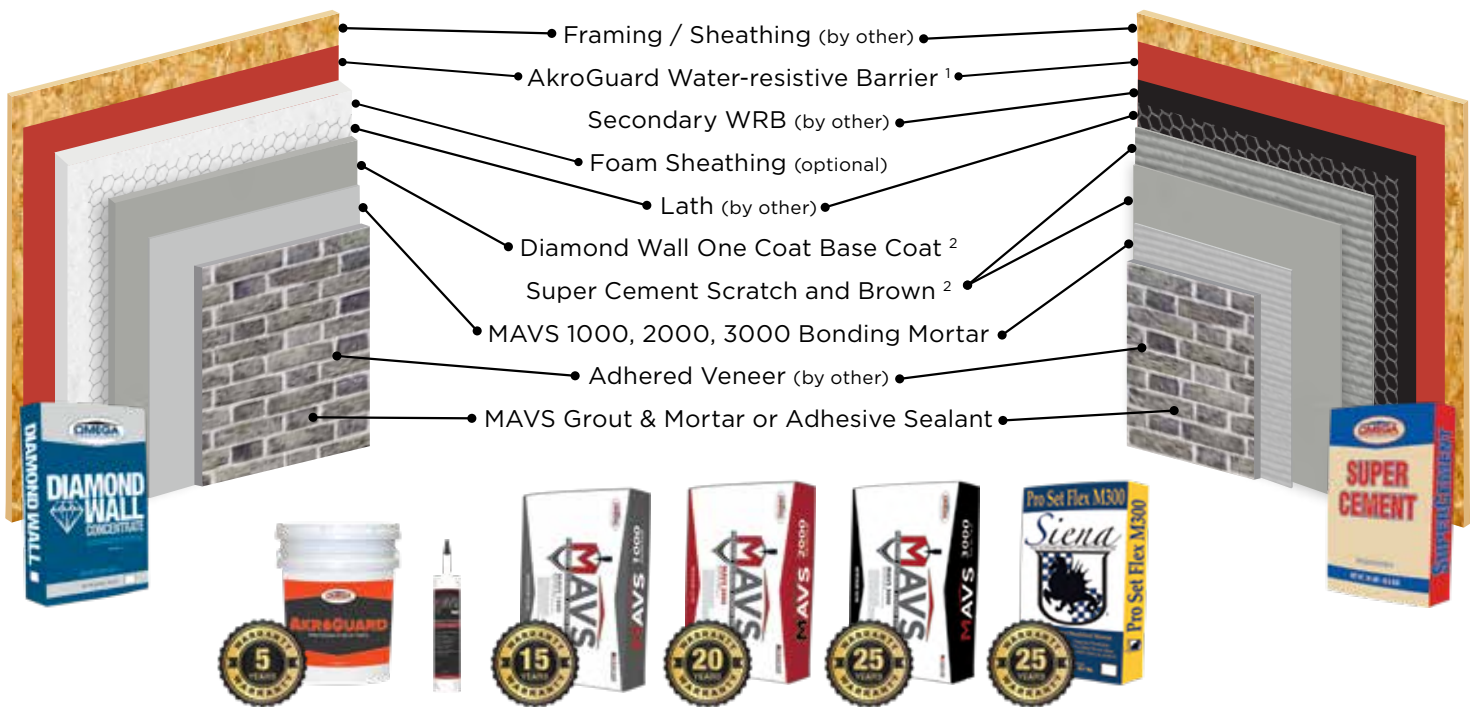


GET UP TO A 35 YEAR WARRANTY USING MAVS

One of the unique features of MAVS is the industry-leading warranties that can be integrated with Omega's wall system products. These exceptional wall system warranties incorporate Omega's already proven wall assemblies with our high-performing MAVS bonding mortars.

Adhered veneer is often being installed over Omega Super Cement Three Coat Systems or Omega Diamond Wall One Coat Systems. When using MAVS to install veneer, the builder or owner receives veneer bonding mortars that are verified to perform over Omega wall systems, plus the integrated warranty that covers the wall assembly from the scratch coat to the veneer. The warranty length depends on the combination of Omega products used.

MAVS with Omega Wall Systems



¹ Using AkroGuard will increase the warranty an additional 5 years

² Omega AkroLoc, Admix 500, or PolyLoc admix may be used to improve base coat tensile/flexural strength and water-resistance. Using admix will increase the warranty an additional 5 years.

WARRANTIES

Omega Products International is proud to manufacture only the highest quality products with excellent warranty plans. All of our products are warranted to be free from defects for a period of one year from the date of purchase. Only a proof of purchase is required to receive this warranty; no form needs to be submitted to Omega Products.

Additionally, Omega has multi-year extended warranties for wall systems that utilize Omega products. The length of the warranty depends upon the combination of products used. The following warranties are available:

YEARS	SYSTEM AND/OR PRODUCTS USED
10	AkroFlex EIF Systems */**
5	Direct Applied (Restrictions Apply) */**
5	Diamond Wall with ColorTek
2	Diamond Wall or Super Cement
7	Diamond Wall with AkroFlex or OmegaFlex Finish */**
8	Diamond Wall with admix and AkroFlex or OmegaFlex Finish */**
6	Diamond Wall with admix and ColorTek
3	AkroFlex or OmegaFlex Finishes *
5	AkroLastic or ProPlus Finishes *
5	Super Cement with ColorTek
7	Super Cement with AkroFlex or OmegaFlex Finish */**
10	Diamond Wall PM with AkroFlex or OmegaFlex Finish */**
7	Diamond Wall PM with ColorTek
6	AkroGuard water-resistive/air barrier (standalone)

- * 3 years added to the above listed warranties when RapidPrime/AkroFlex Primer is used.
- ** 2 years added to the above listed warranties when AkroLastic or ProPlus finish is used.
- + 5 years added to the above listed warranties when Crack Isolation System is used.
- ++ 3 years added to the above listed warranties when AkroGuard water-resistive/air barrier is used.

To receive a written warranty, please download the Application for a Written Warranty file from the Omega website. The project must be completed prior to submitting the warranty application.



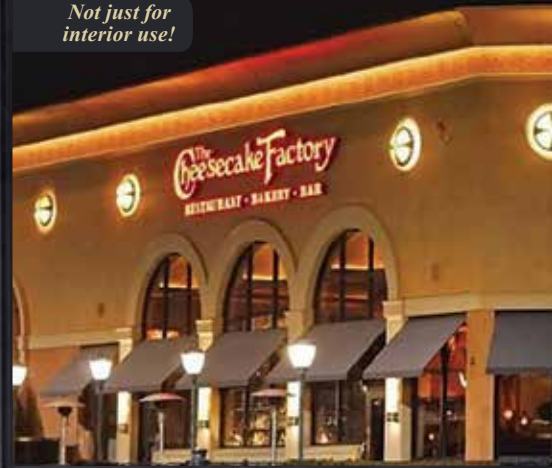
Valentino

DECORATIVE FINISHES

From old-world charm to modern decor, our Valentino line offers a variety of high-end decorative finishes, including authentic lime-based Venetian plaster, to complement your design.

*Custom color matching | Full technical support
Training classes available*

Not just for interior use!



ValentinoProducts.com

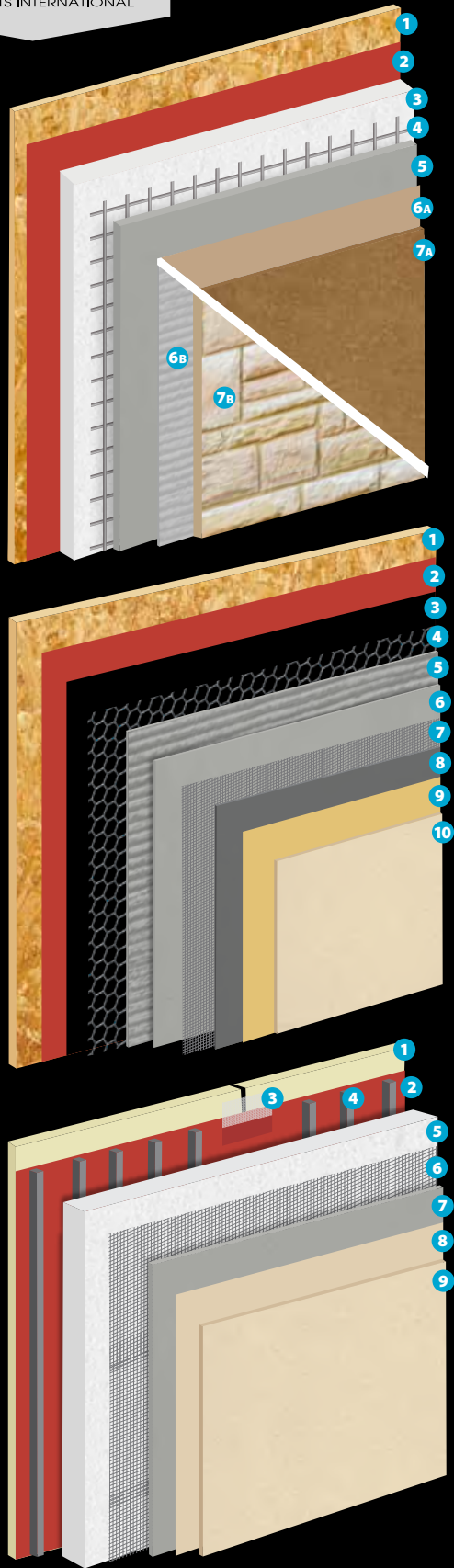


PREMIUM TILE, STONE & MASONRY INSTALLATION PRODUCTS

Sienna Tile & Stone Installation Products brings outstanding quality, excellent service, and exceptional products into the tile industry. Sienna offers a full line of thinsets and LHT mortars, an incredible elastomeric waterproofing & crack isolation membrane, 36 brilliant new grout colors, surface preparation, and more.



SIENAPRODUCTS.COM



DIAMOND WALL

One Coat Insulating Stucco System

1. Approved Sheathing
2. AkroGuard – Water-Resistive Barrier
3. Foam Board
4. Metal Lath
5. Diamond Wall – Base Coat

STUCCO FINISH OPTION (A)

- 6A. RapidPrime – Primer Coat
- 7A. OmegaFlex Acrylic Stucco – Finish Coat

ADHERED VENEER OPTION (B)

- 6B. MAVS Bonding Mortar
- 7B. Veneer

SUPER CEMENT

Three Coat Stucco with Crack Isolation System

1. Approved Sheathing
2. AkroGuard – Water-Resistive Barrier
3. Secondary – Water Resistive Barrier
4. Metal Lath
5. Super Cement – Scratch Coat
6. Super Cement – Brown Coat
7. Crack Isolation Mesh
8. Crack Isolation Base – Base Coat
9. BondCrete – Bonder
10. ColorTek Smooth Coat Stucco – Finish Coat

AKROFLEX

EIFS – AkroFlex Water Managed Plus System

1. Approved Sheathing
2. AkroGuard – Water-Resistive Barrier
3. AkroGuard Joint Treatment
4. StyroGlue – Adhesive
5. Foam Board
6. AkroFlex Mesh
7. StyroGlue – Base Coat
8. AkroFlex Primer – Primer Coat
9. AkroFlex Acrylic Stucco – Finish Coat

Other wall systems and components are available.

CORPORATE OFFICE

1681 California Ave. Corona, CA 92881

Phone: (951) 737-7447 | Fax: (951) 520-2594 | omega-products.com

5420 Aldrin Court
Bakersfield, CA 93313
Phone: (661) 835-0155
Fax: (661) 835-0402

5576 Wynn Road
Las Vegas, NV 89118
Phone: (702) 739-9040
Fax: (702) 739-9059

8111 Fruitridge Road
Sacramento, CA 95826
Phone: (916) 635-3335
Fax: (916) 635-8995

6101 Dexter Street
Commerce City, CO 80022
Phone: (303) 736-4470
Fax: (303) 287-4053

Sigue este enlace para ver nuestro
catálogo en español.

